

8

7

6

5

4

3

2

1

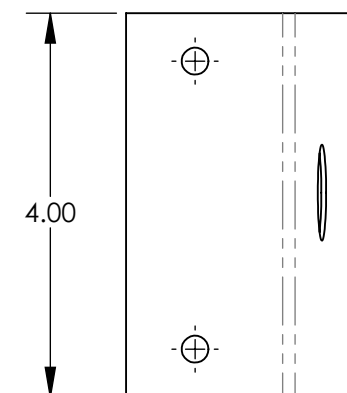
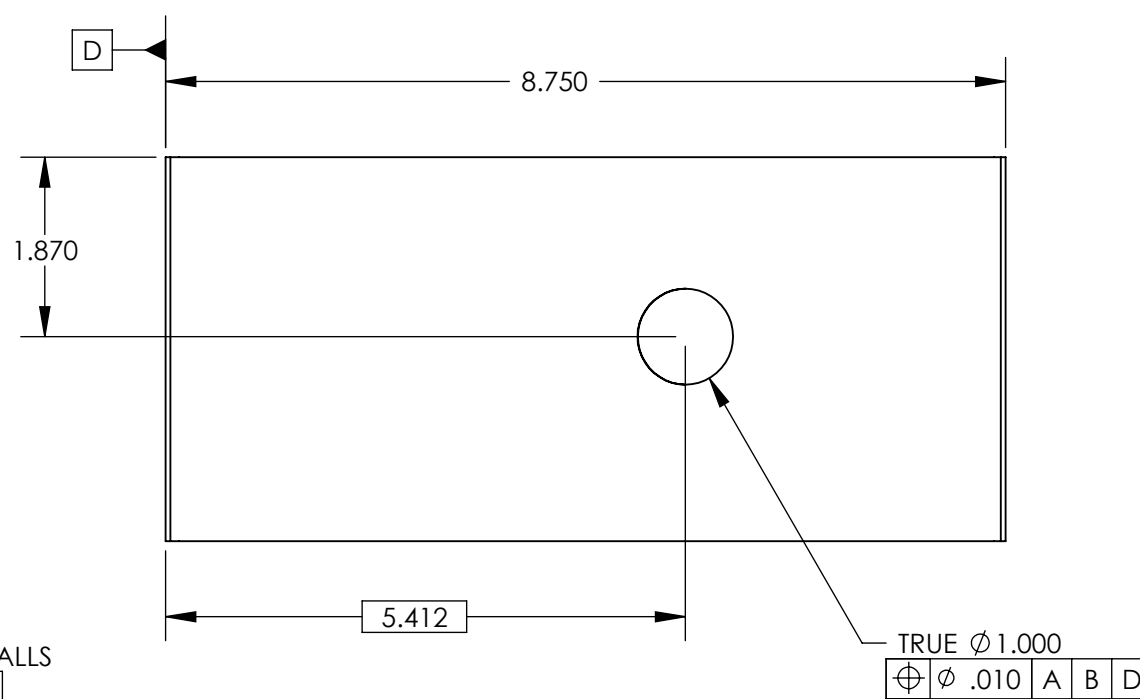
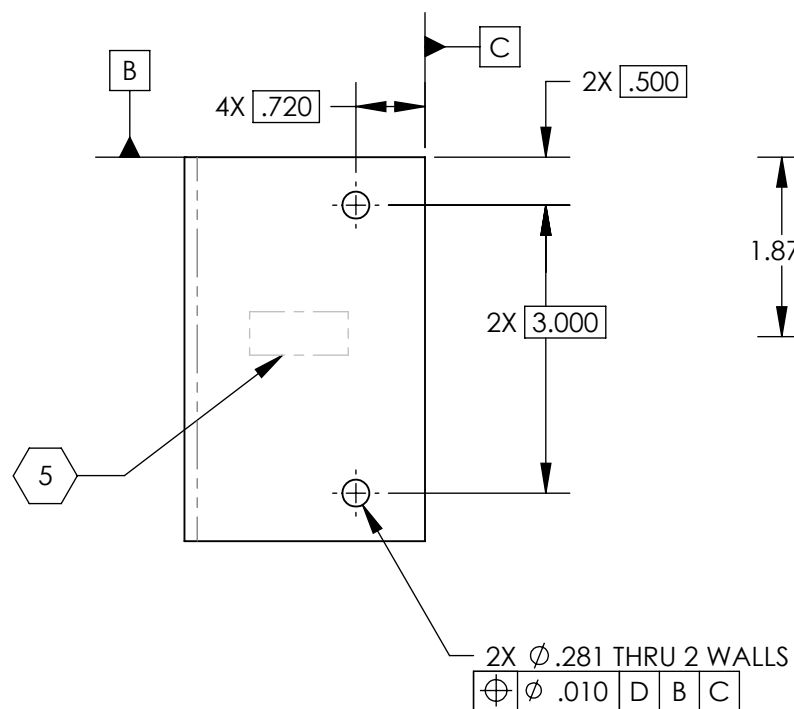
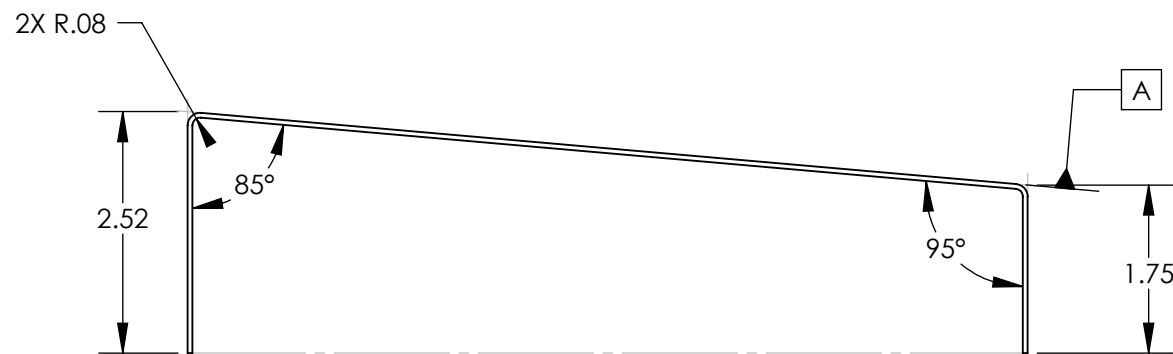
NOTES CONTINUED:

5. SCRIBE, ENGRAVE, OR MECHANICALLY STAMP (NO INKS OR DYES) DRAWING PART NUMBER, REVISION (AND VARIANT OR "TYPE" IF APPLICABLE) ON NOTED SURFACE OF PART FOLLOWED ON THE NEXT LINE WITH A THREE DIGIT SERIAL NUMBER. SERIAL NUMBERS START AT 001 FOR THE FIRST ARTICLE AND PROCEED CONSECUTIVELY. USE MINIMUM 0.12" HIGH CHARACTERS, UNLESS THE SIZE OF THE PART DICTATES SMALLER CHARACTERS. A VIBRATORY TOOL MAY BE USED.  
EXAMPLE: DXXXXXX-VY, TYPE-XX, S/N XXX

6. PORCELAIN COAT PER SPECIFICATIONS E1000083

7. MATERIAL: MACHINE FINISH AS RECEIVED

REV.	DATE	DCN #	DRAWING TREE #
v1	09 APR 2009	-	-
v2	07 OCT 2010	E1000563	-
v3	28 FEB 2011	E1000563	-



NOTES AND TOLERANCES: (UNLESS OTHERWISE SPECIFIED)

DIMENSIONS ARE IN  
TOLERANCES:  
.XX ± .03  
.XXX ± .010  
ANGULAR ± 1.0°

1. INTERPRET DRAWING PER ASME Y14.5-1994.  
2. REMOVE ALL SHARP EDGES, R.02 MIN.  
3. DO NOT SCALE FROM DRAWING.  
4. ALL MACHINING FLUIDS MUST BE FULLY SYNTHETIC, FULLY WATER SOLUBLE AND FREE OF SULFUR, SILICONE, AND CHLORINE.

MATERIAL A424 TYPE I, 18GA, SSTL OR 304  
FINISH SEE NOTE 7

**LIGO** CALIFORNIA INSTITUTE OF TECHNOLOGY  
MASSACHUSETTS INSTITUTE OF TECHNOLOGY

SYSTEM ADVANCED LIGO SUB-SYSTEM AOS  
NEXT ASSY D0900136

PART NAME REFLECTION BAFFLE

DESIGNER		SIZE	DWG. NO.	REV.
DRAFTER	MRUIZ		D0902845	v3
CHECKER				
APPROVAL		SCALE: 1:2	PROJECTION:	SHEET 1 OF 1

D0902845\_AdlIGO\_AOS\_FID0900136\_Reflection Baffle, PART PDM REV: X-011, DRAWING PDM REV: X-008

8

7

6

5

4

3

2

1