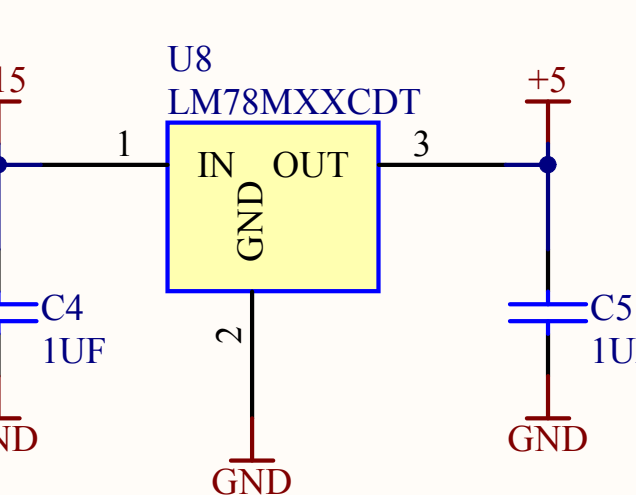
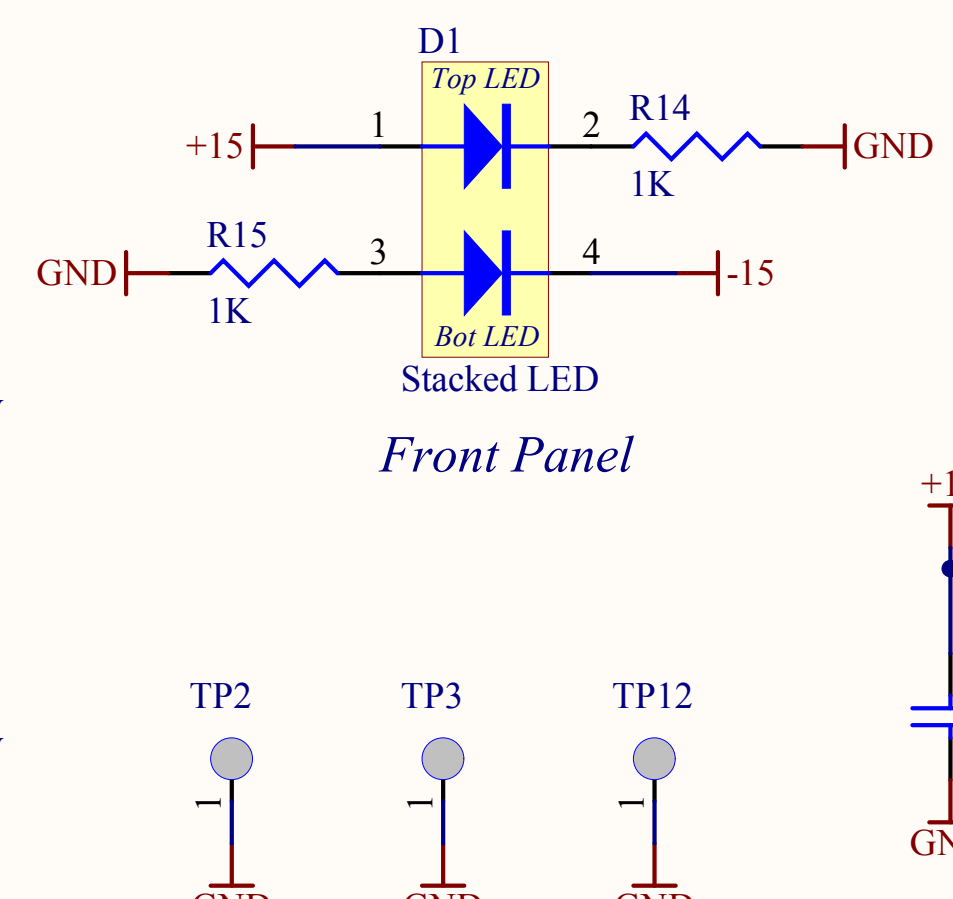
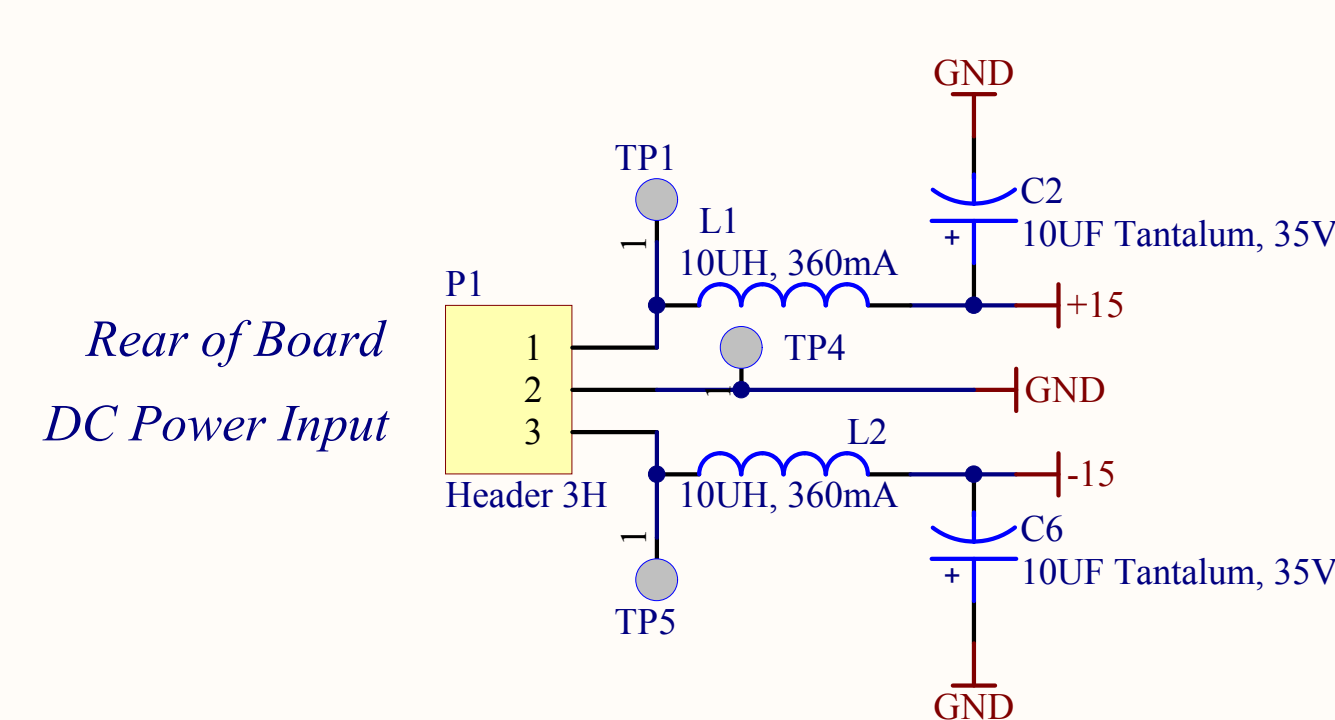


DC Power Requirements Per Board
 +15 at 230mA
 -15 at 80mA

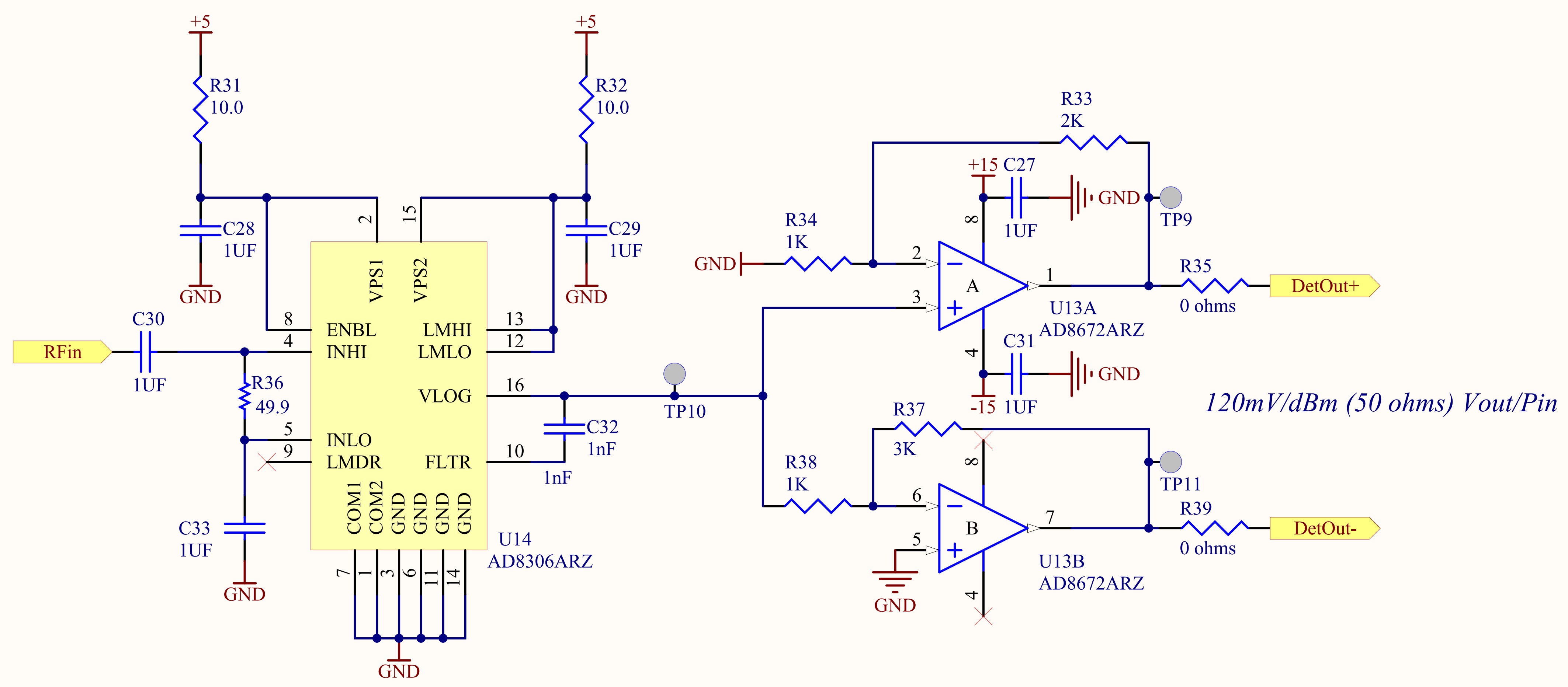


- 7687K-ND gouments used for SMA connectors 1 inside the panel and 1 outside pannel
- J4 Nylon Washer
- J15 Nylon Washer
- J16 Nylon Washer
- J17 Nylon Washer
- SUPPORT FOR PLP-XX LOWPASS FILTER MINIATURE SPRING SOCKETS
- J7 PLP-Socket
- J8 PLP-Socket
- J9 PLP-Socket
- J10 PLP-Socket
- J11 PLP-Socket
- J12 PLP-Socket
- J13 PLP-Socket
- J14 PLP-Socket
- RAF # 3049-B-440-B-16 Standoffs for PCB mouting to Chassis
- P4 Standoff
- P5 Standoff

Last Edited: 22 January 2010

Title		aLIGO I&Q RF Demodulator		LIGO Laboratory California Institute of Technology Massachusetts Institute of Technology		LIGO	
Size: B	DCC Number: D0902745-V3	Revision:	Engineer: R. Abbott	Date: 6/2/2010	Time: 4:24:49 PM		
File: C:\Documents and Settings\costheld\My Documents\chub_ligo_files\ChubAltium\project_files\Adl_demod\D0902745_v3.SchDoc of 3							

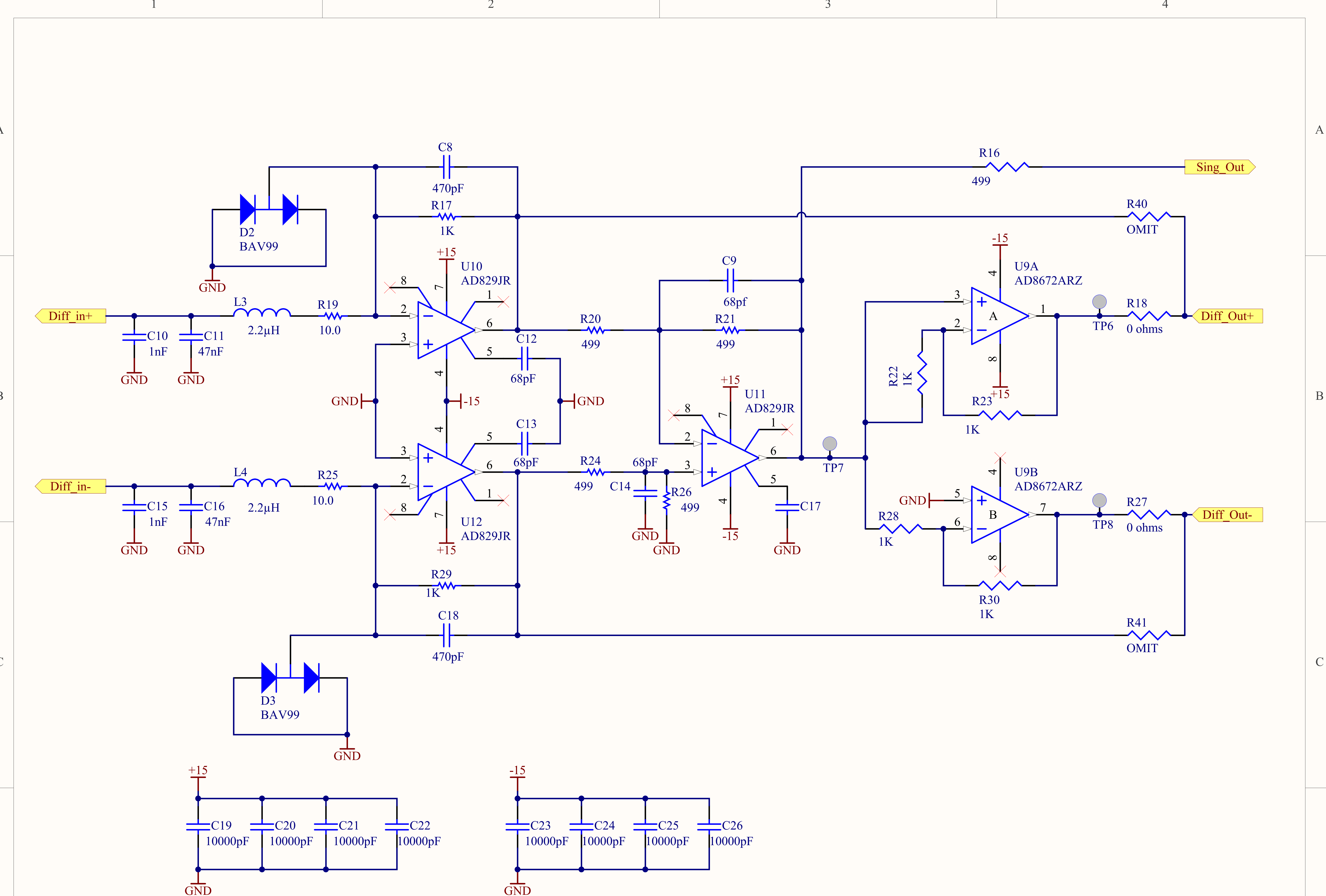
5 to 400 MHz Log Detector
90 dB Dynamic Range, 10dBm Max RF



120mV/dBm (50 ohms) Vout/Pin

Last Edited: 22 January 2010

Title <i>RF Logarithmic Detector</i>			LIGO Laboratory California Institute of Technology Massachusetts Institute of Technology		
Size: A	PCB DCC # D0902745	SCH DCC # D0902745-V3	Engineer: R. Abbott	Date: 6/2/2010 Time: 4:24:49 PM	
File: C:\Documents and Settings\costheld\My Documents\chub_ligo_files\ChubAltium\project_files\Adl_demod\rfdet.SchDoc Sheet 2 of 3					



Last Edited: 22 January 2010

Title			LIGO Laboratory California Institute of Technology Massachusetts Institute of Technology	
Audio Differential IF Amplifier			LIGO	
Size: A	PCB DCC # D0902745	SCH DCC # D0902745-V3	Engineer: R. Abbott	Date: 6/2/2010
File: C:\Documents and Settings\costheld\My Documents\chub_ligo_files\ChubAltium\project_files\Adl_demo\DiffAmp.SchDoc			Time: 4:24:49 PM	Sheet 3 of 3

SN

aLIGO D0902745-v3 I&Q RF Demodulator

