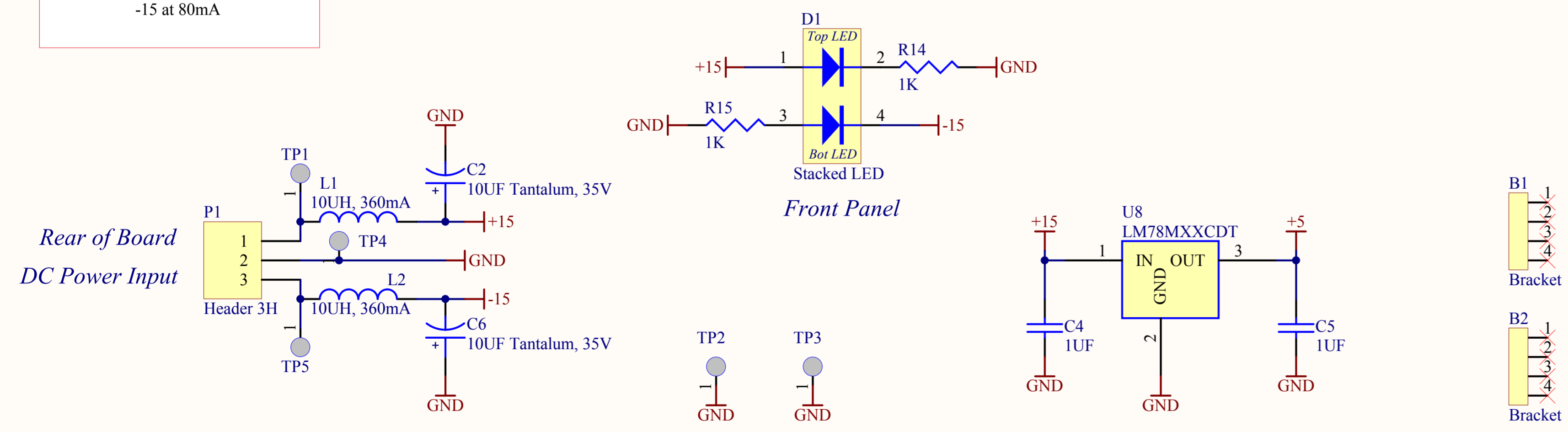


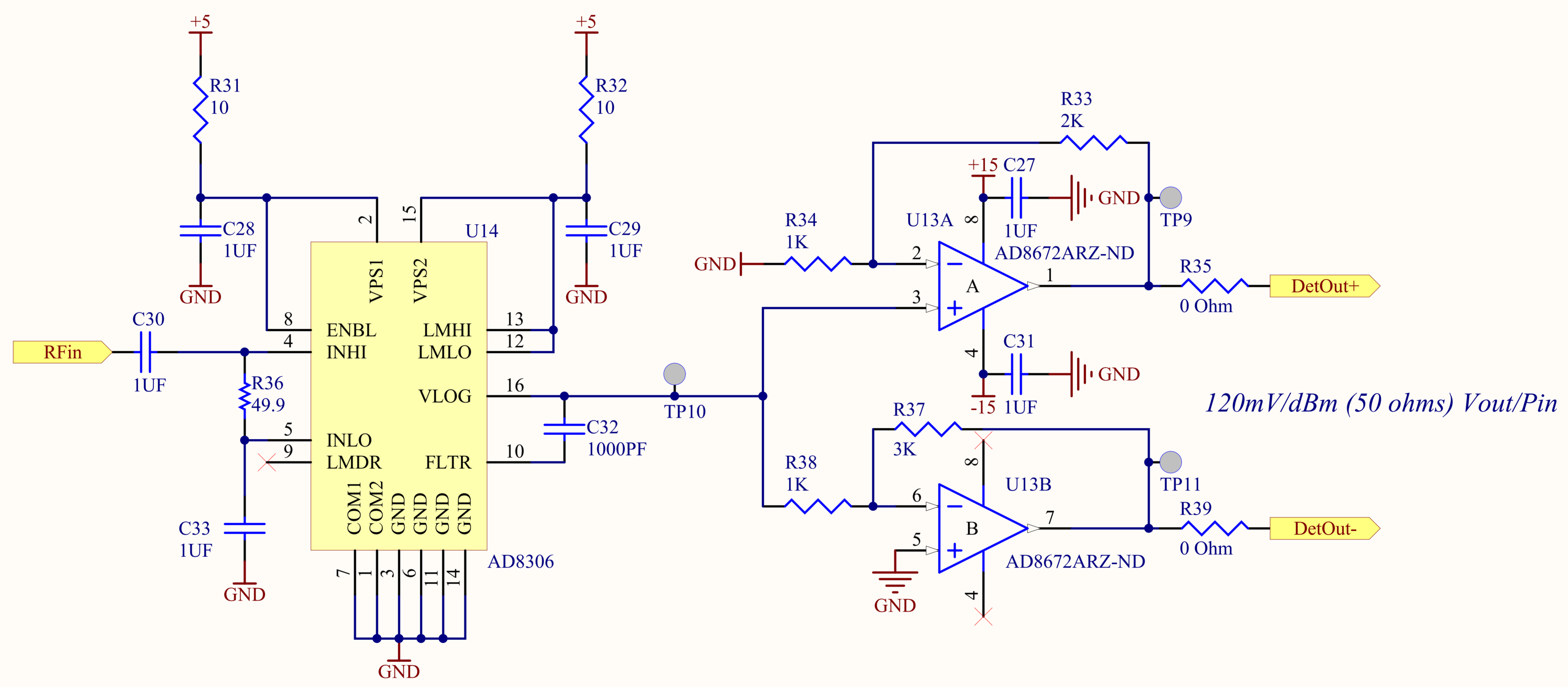
DC Power Requirements Per Board
 +15 at 230mA
 -15 at 80mA




Last Edited: 22 January 2010

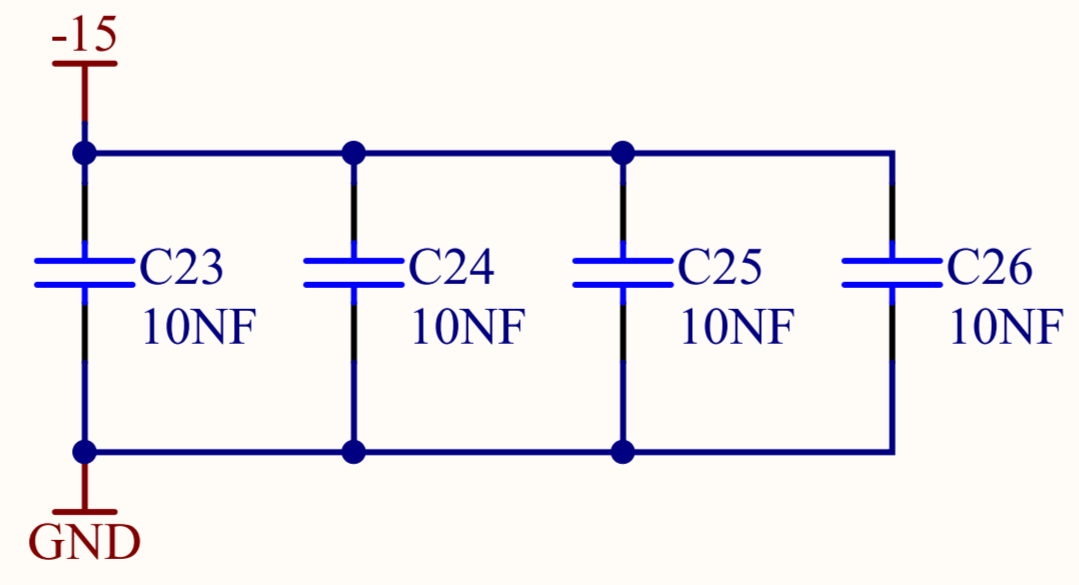
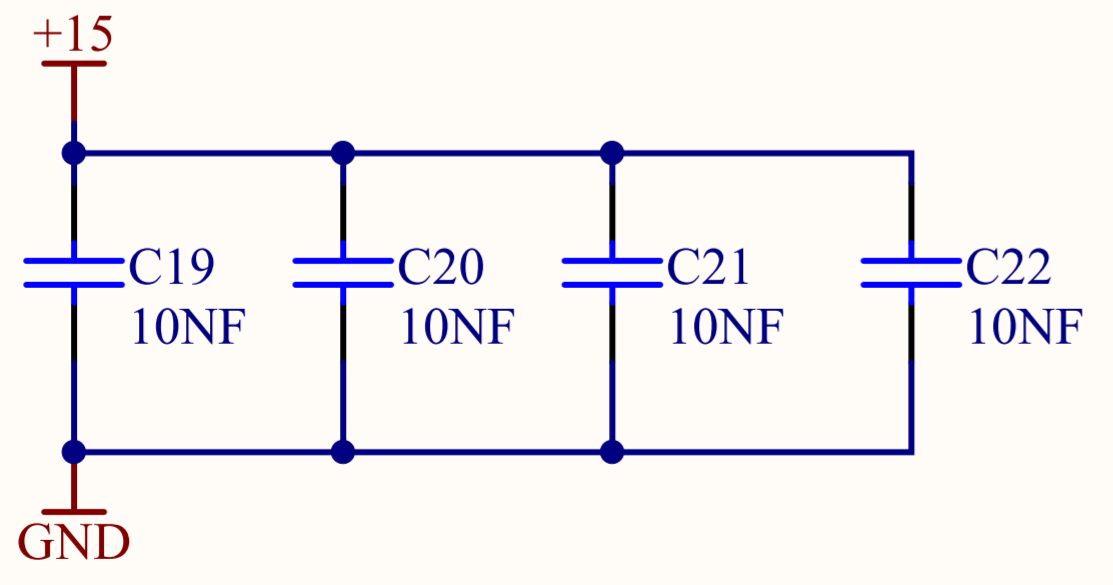
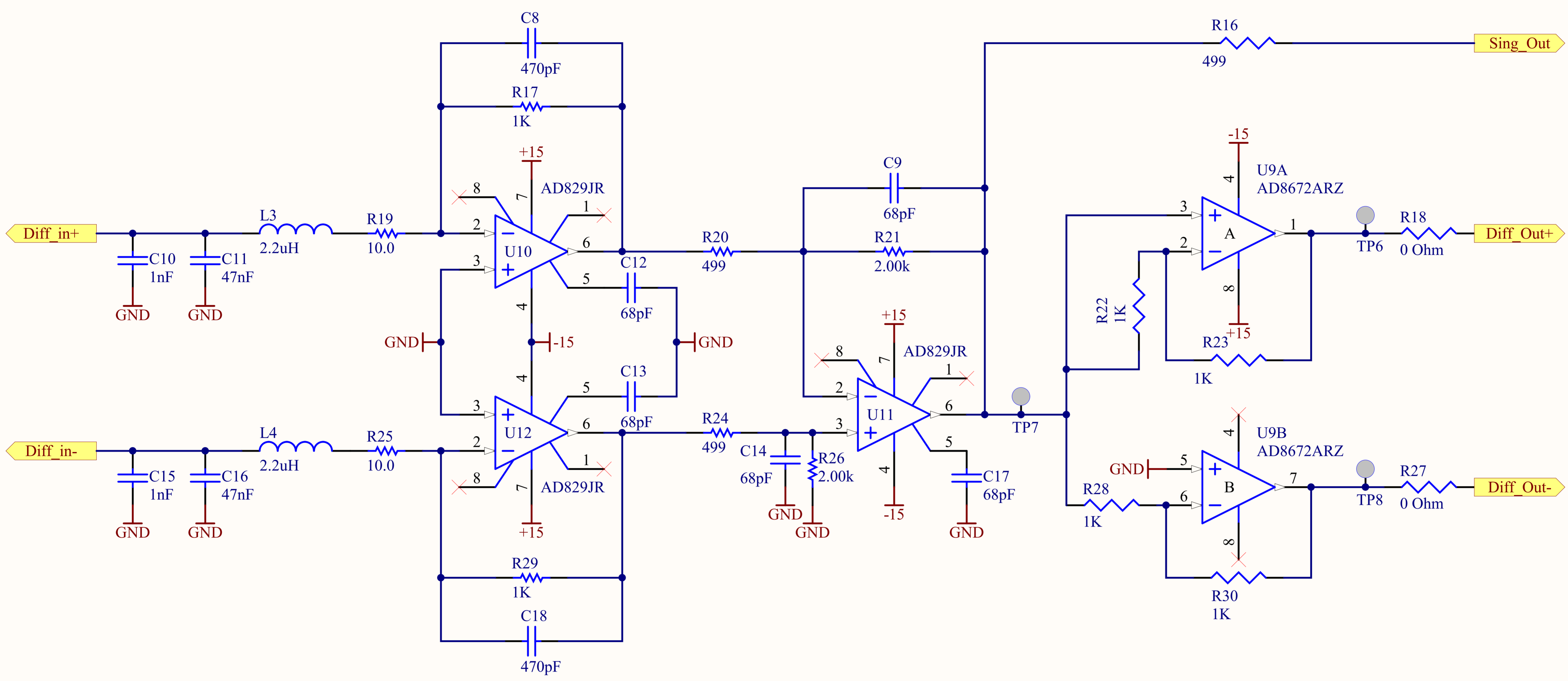
Title		aLIGO I&Q RF Demodulator		LIGO Laboratory California Institute of Technology Massachusetts Institute of Technology		LIGO	
Size: B	DCC Number: D0902745	Revision: V1	Engineer: R. Abbott	Date: 2/5/2010		Time: 5:03:08 PM	
File: C:\Rich's Files\Mycadfiles\ISC\Adl_demod\Adl_IQ.SchDoc				Sheet 1 of 3			

5 to 400 MHz Log Detector
90 dB Dynamic Range, 10dBm Max RF




Last Edited: 22 January 2010

Title <i>RF Logarithmic Detector</i>			LIGO Laboratory California Institute of Technology Massachusetts Institute of Technology		 Date: 2/5/2010 Time: 5:03:08 PM Sheet 2 of 3
Size: A	PCB DCC # D0902745	SCH DCC # D0902745-V1	Engineer: R. Abbott		
File: C:\Rich's Files\Mycadfiles\ISC\Adl_demod\rfdet.SchDoc					



Last Edited: 22 January 2010

Title Audio Differential IF Amplifier			LIGO Laboratory California Institute of Technology Massachusetts Institute of Technology		 Date: 2/5/2010 Time: 5:03:08 PM Sheet 3 of 3
Size: A	PCB DCC # D0902745	SCH DCC # D0902745-V1	Engineer: R. Abbott		
File: C:\Rich's Files\Mycadfiles\ISC\Adl_demo\DiffAmp.SchDoc					

D0902745 I&Q RF Demodulator aLIGO

