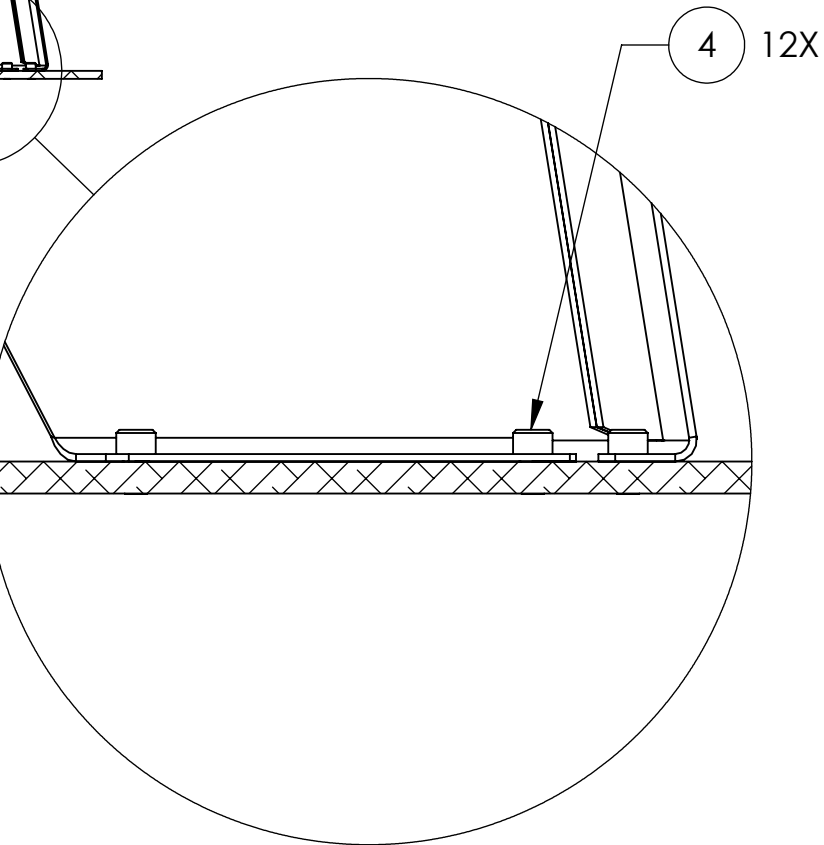
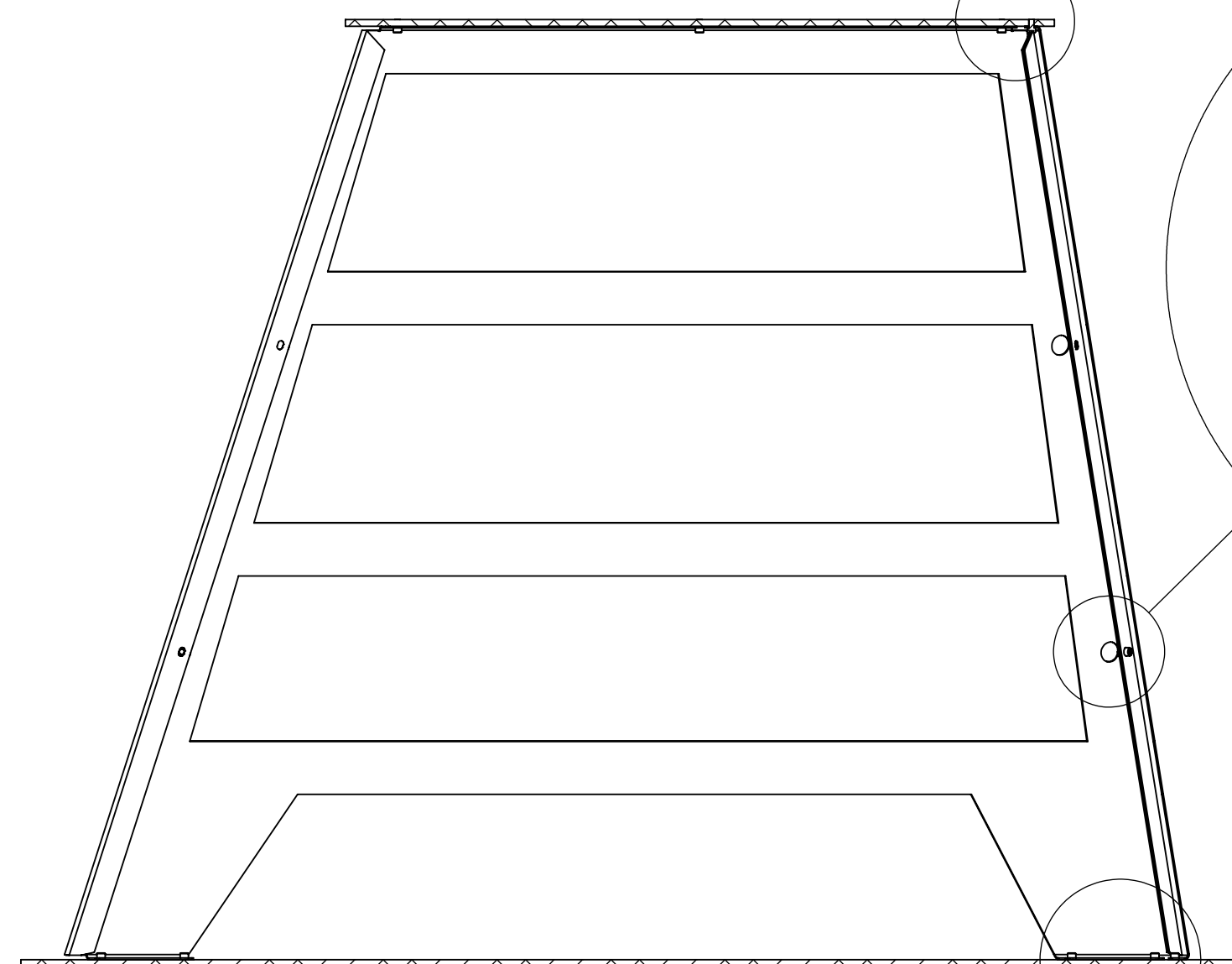
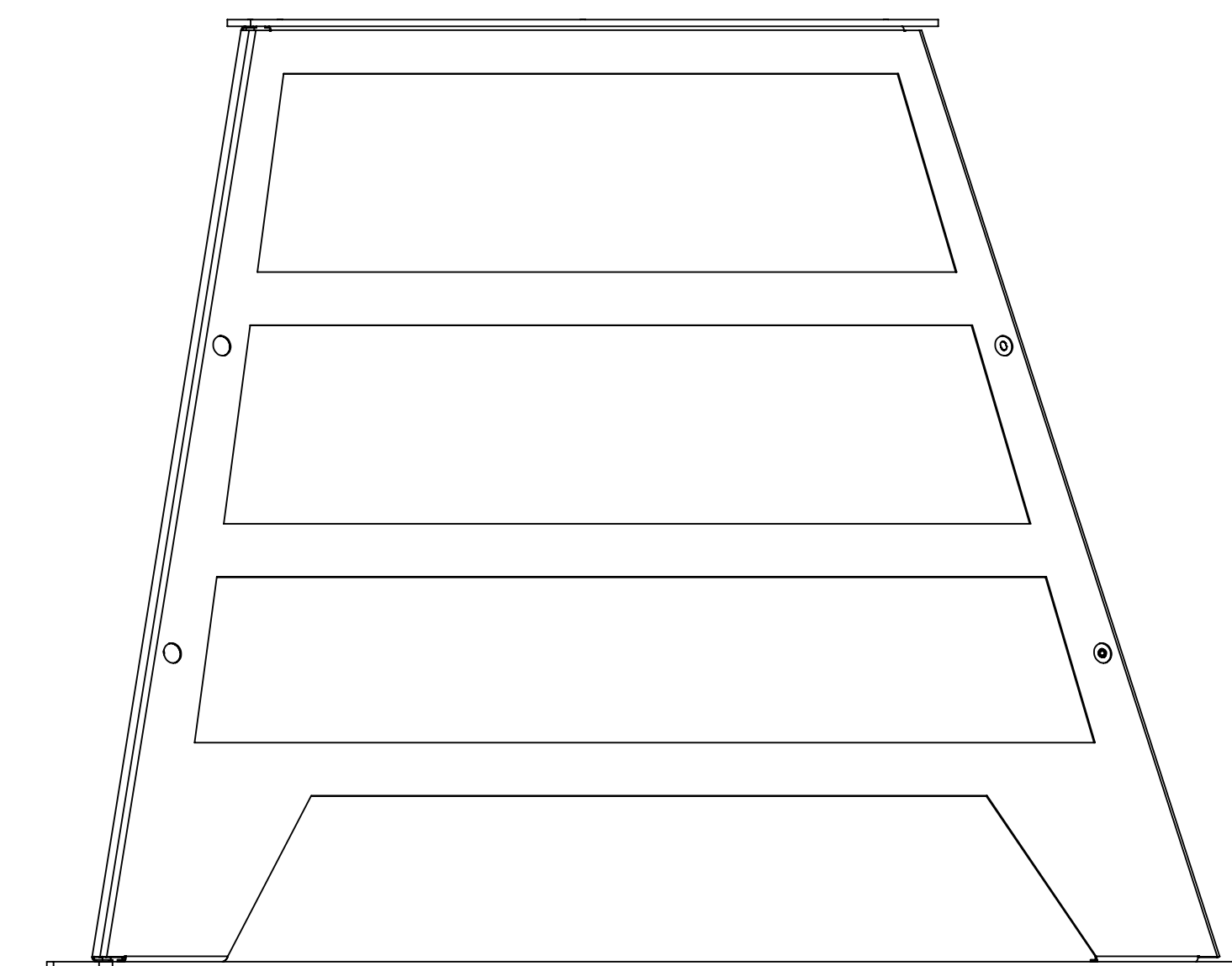
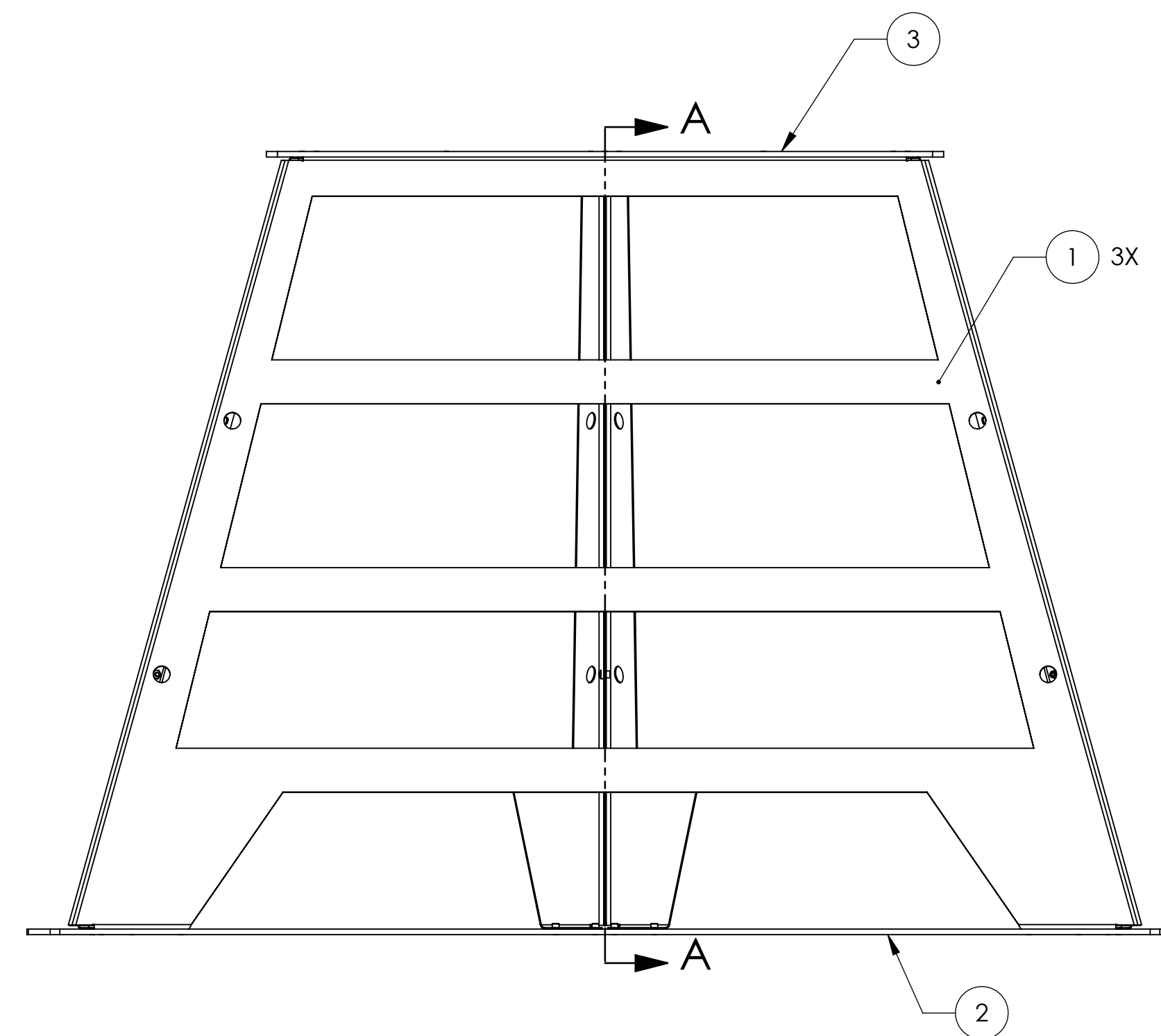
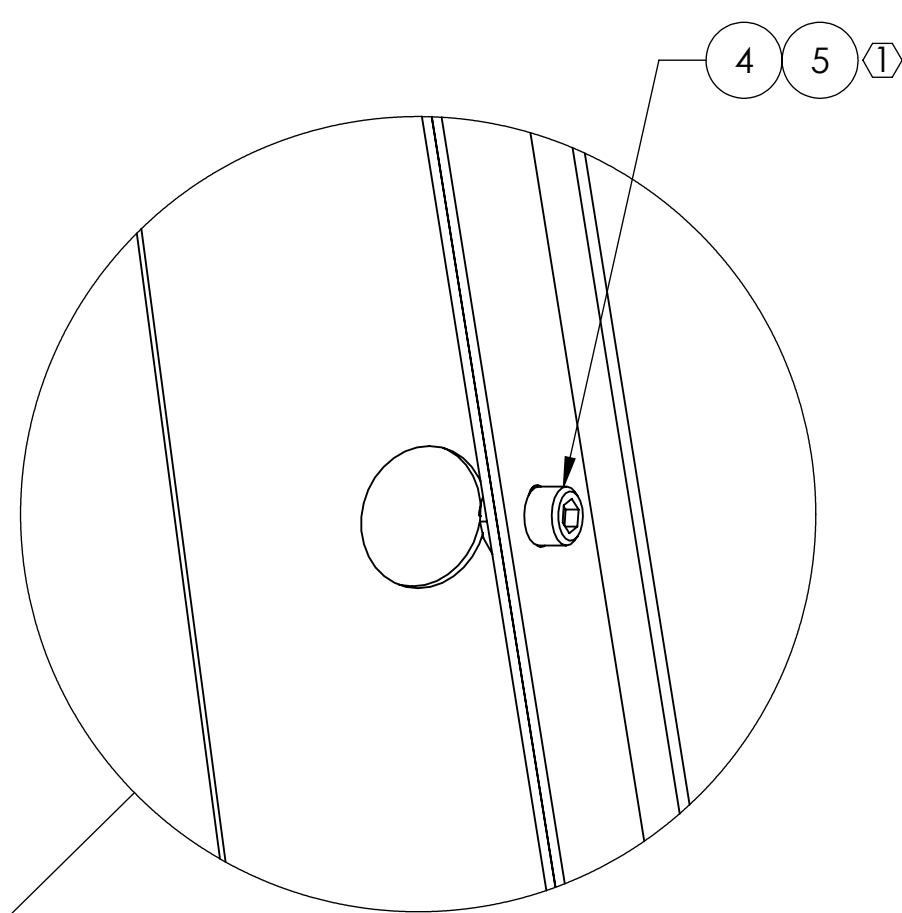
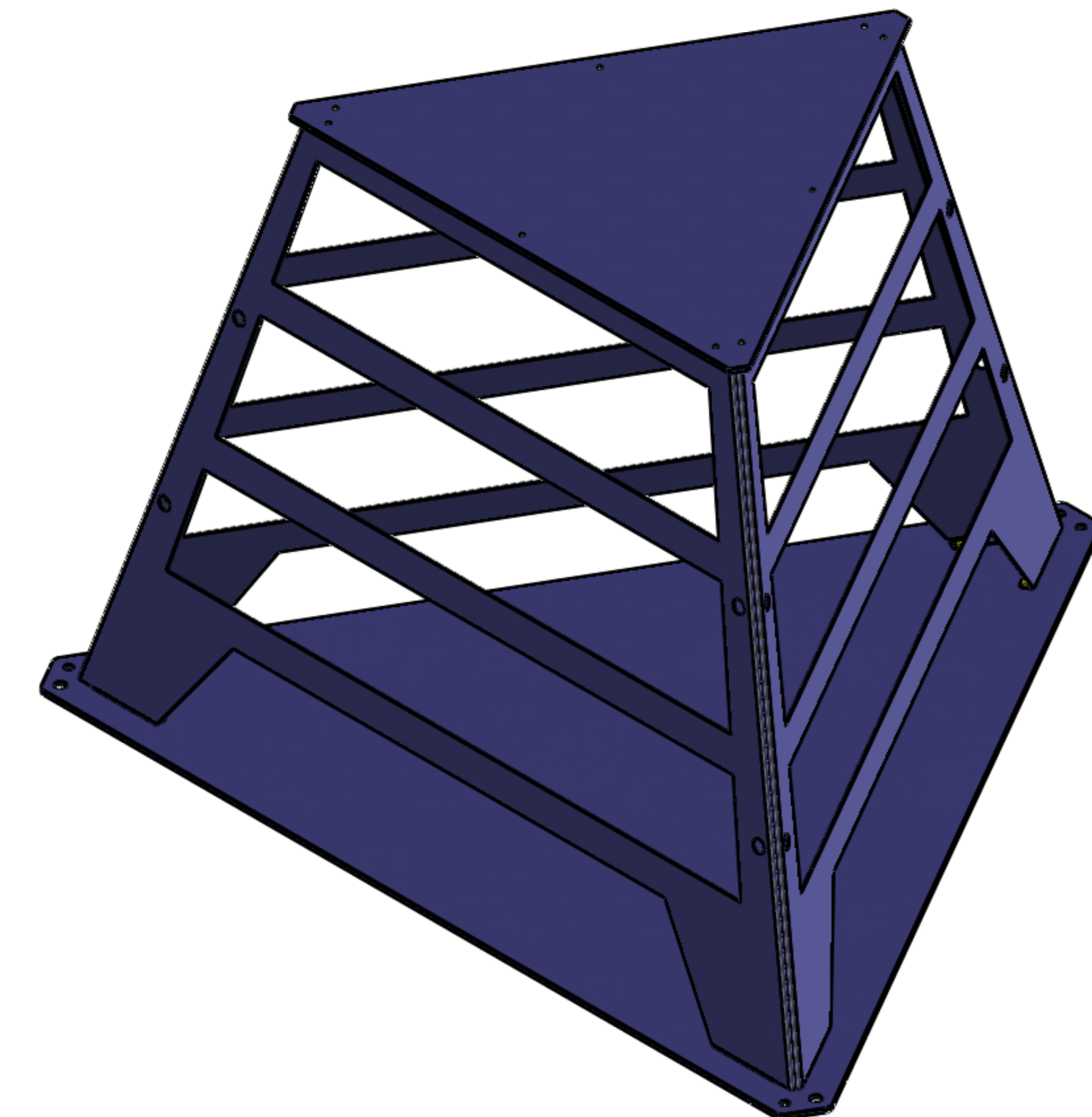
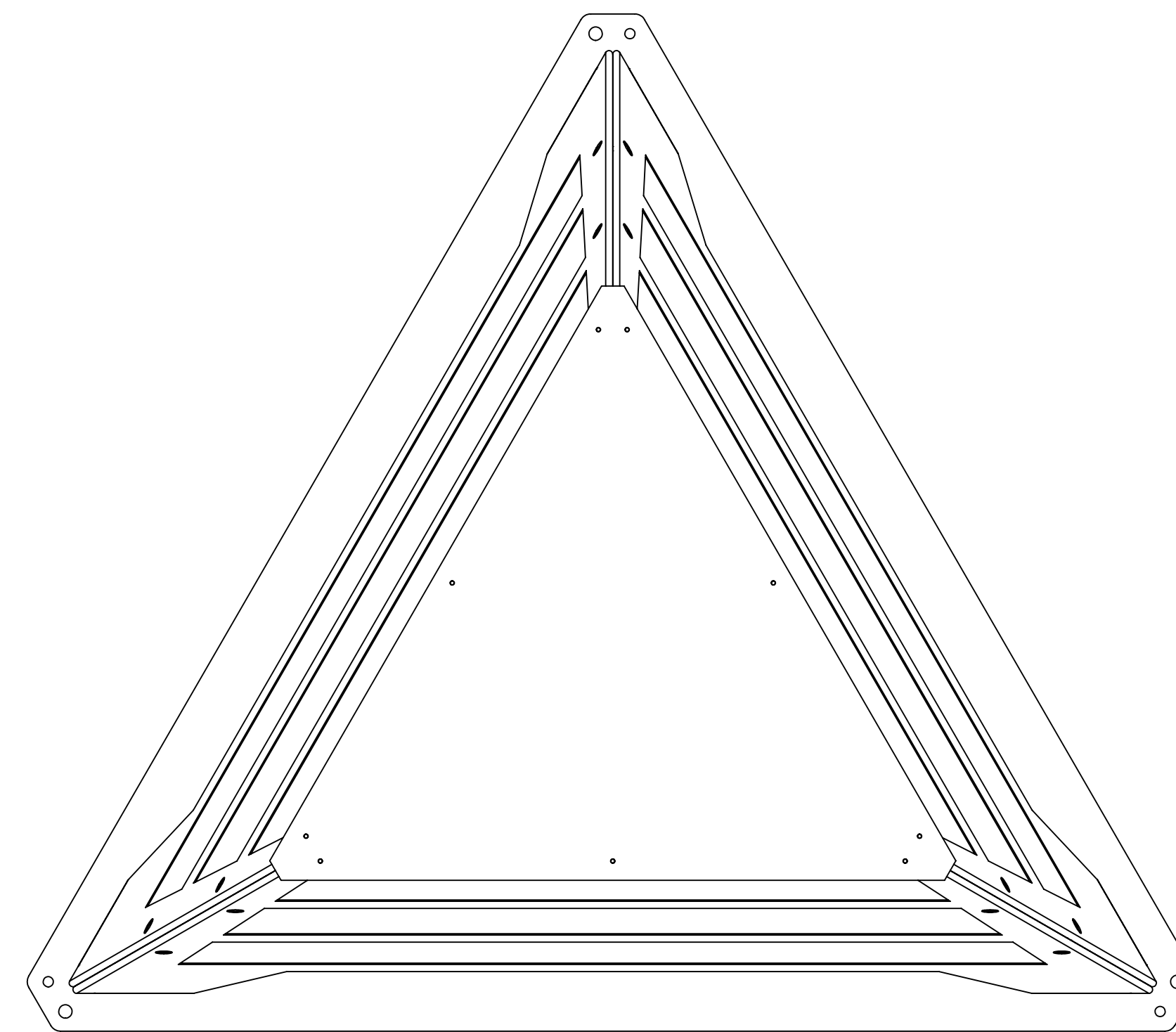
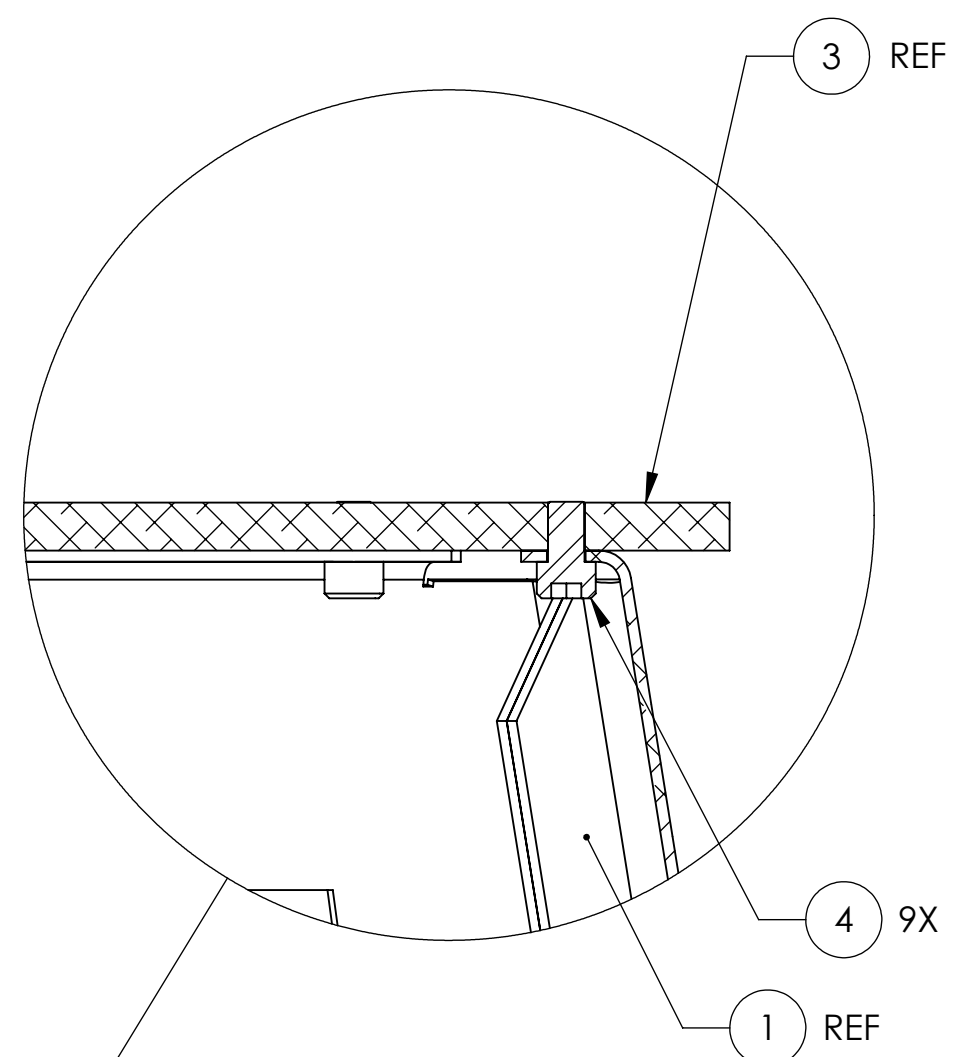


NOTES CONTINUED:  
 ① CLAMP ITEMS 1 TO EACH OTHER USING ITEMS 4&5, 6 PLACES.

REV.	DATE	DCN #	DRAWING TREE #
v1	17 NOV 2009	E0900399-v1	-
-	-	-	-
-	-	-	-



ITEM NO.	PART NUMBER	DESCRIPTION	MATERIAL	REQ	SPARE	TOTAL
5	-	HEX NUT, #10-32	STEEL	6	2	8
4	-	SCREW, SOCKET HEAD CAP, #10-24 UNC-2A X 0.3125 LONG	STEEL	27	3	30
3	D0902694	ALIGO AOS OPLEV TX PIER TABLE MOCK-UP [ITM]	6061 Alloy	1		1
2	D0902324	ALIGO AOS PIER BASE MOCK-UP, 42 in	6061 Alloy	1		1
1	D0902693	ALIGO AOS OPLEV TX PIER SIDE PANEL MOCK-UP [ITM]	6061 Alloy	3		3

NOTES AND TOLERANCES: (UNLESS OTHERWISE SPECIFIED)	
DIMENSIONS ARE IN	
TOLERANCES:	
±	
±	
±	
MATERIAL	N/A
FINISH	N/A μinch

**LIGO** CALIFORNIA INSTITUTE OF TECHNOLOGY  
 MASSACHUSETTS INSTITUTE OF TECHNOLOGY

SYSTEM: **ADVANCED LIGO** SUB-SYSTEM: **AOS**

NEXT ASSY: N/A

PART NAME: **ALIGO AOS OpLev TX Pier Mock-Up [ITM]**

DESIGNER	C. CONLEY	17 NOV 2009	SIZE	DWG. NO.	REV.
DRAFTER	C. CONLEY	17 NOV 2009	<b>D</b>	<b>D0902692</b>	<b>v1</b>
CHECKER					
APPROVAL					

SCALE: NONE PROJECTION:

SHEET 1 OF 1

D0902692 ALIGO AOS OpLev TX Pier Mock-Up [ITM] PART PDM REV: X-002 DRAWING PDM REV: X-001