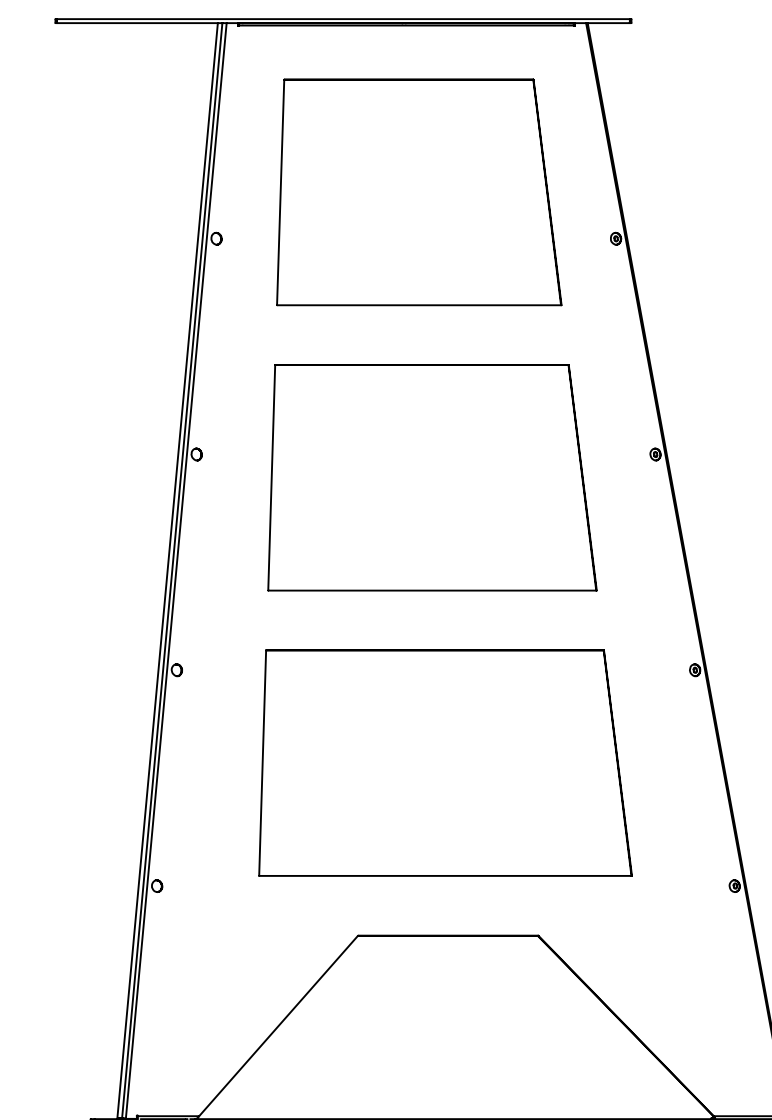
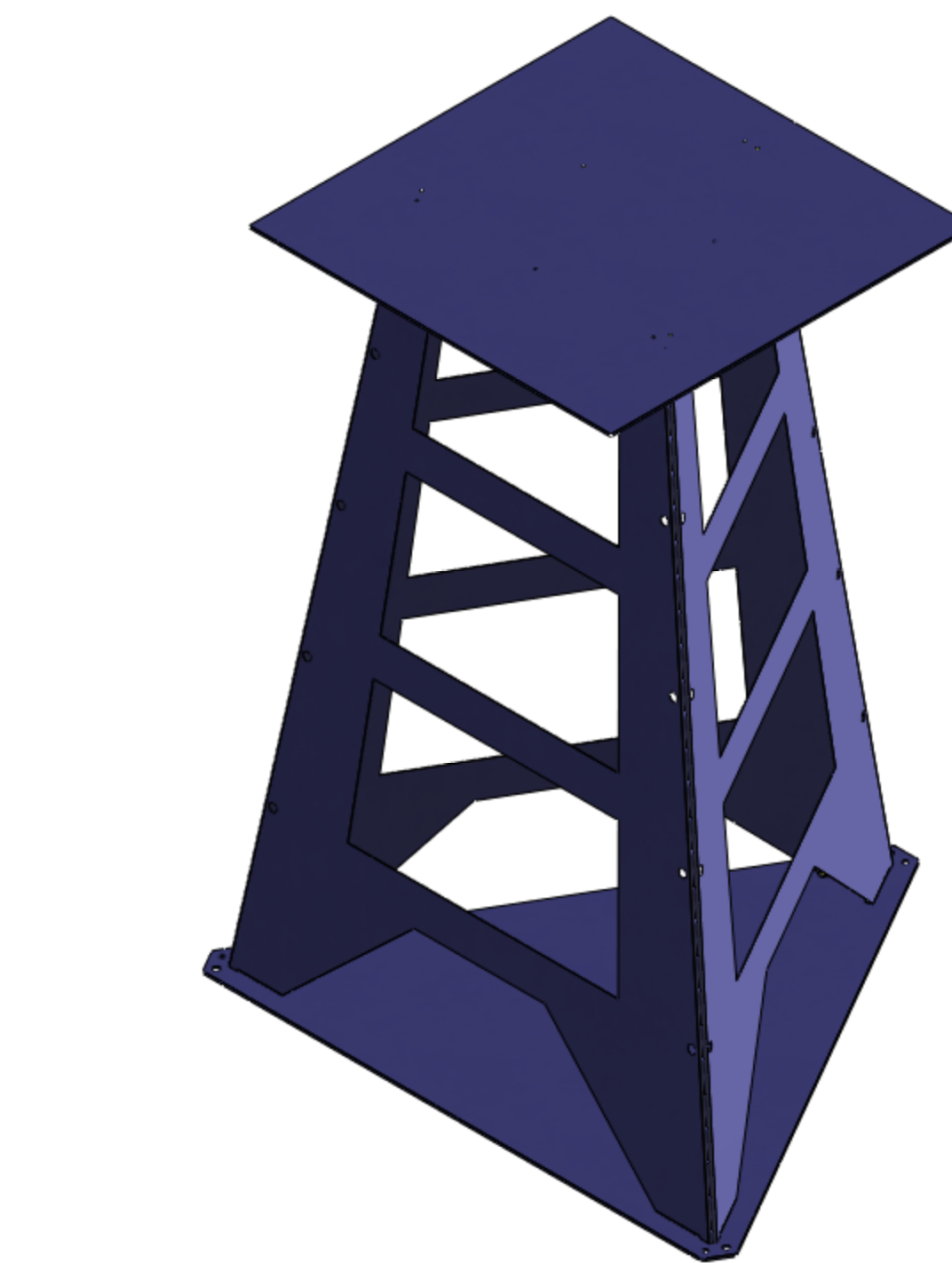
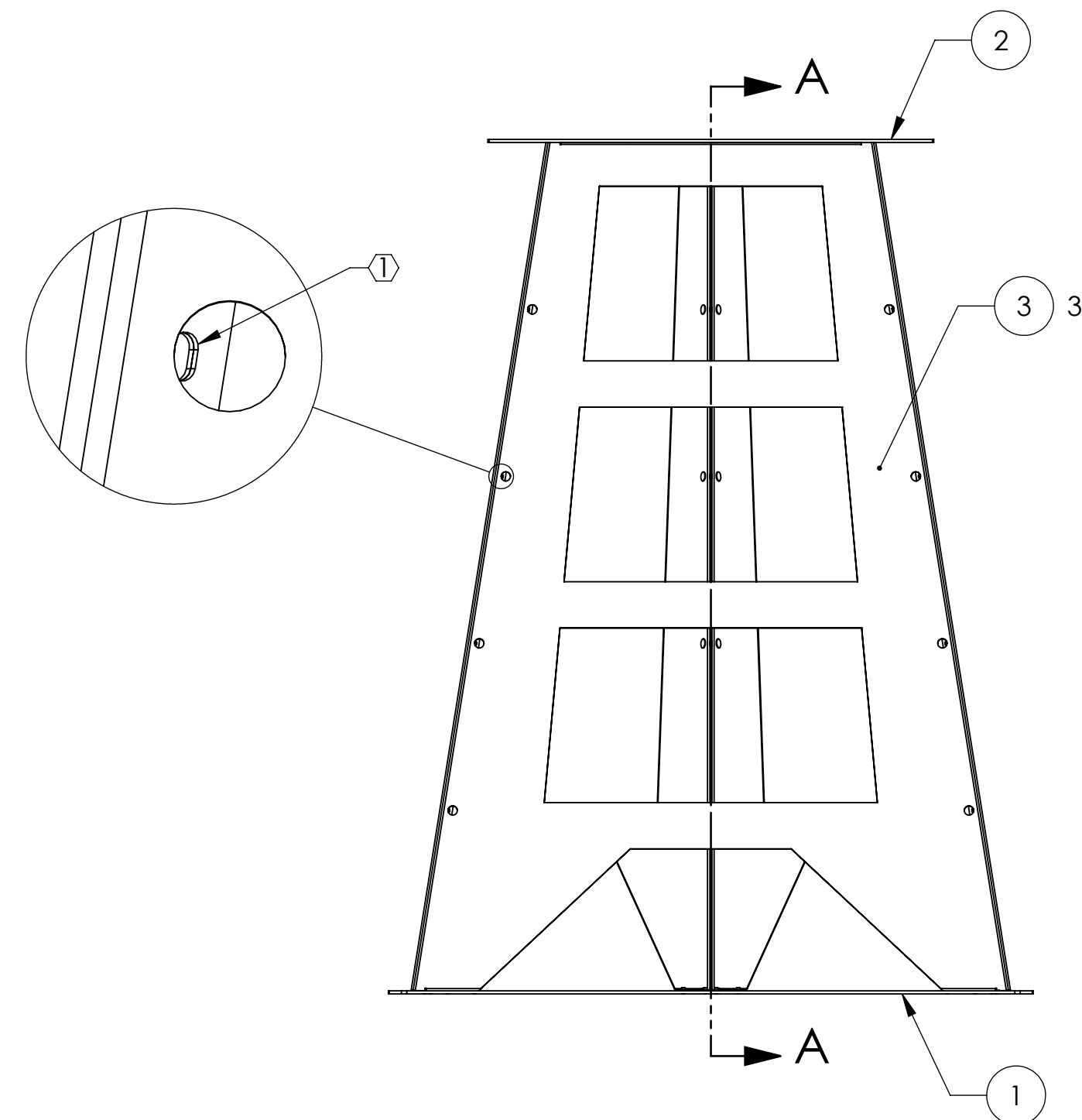
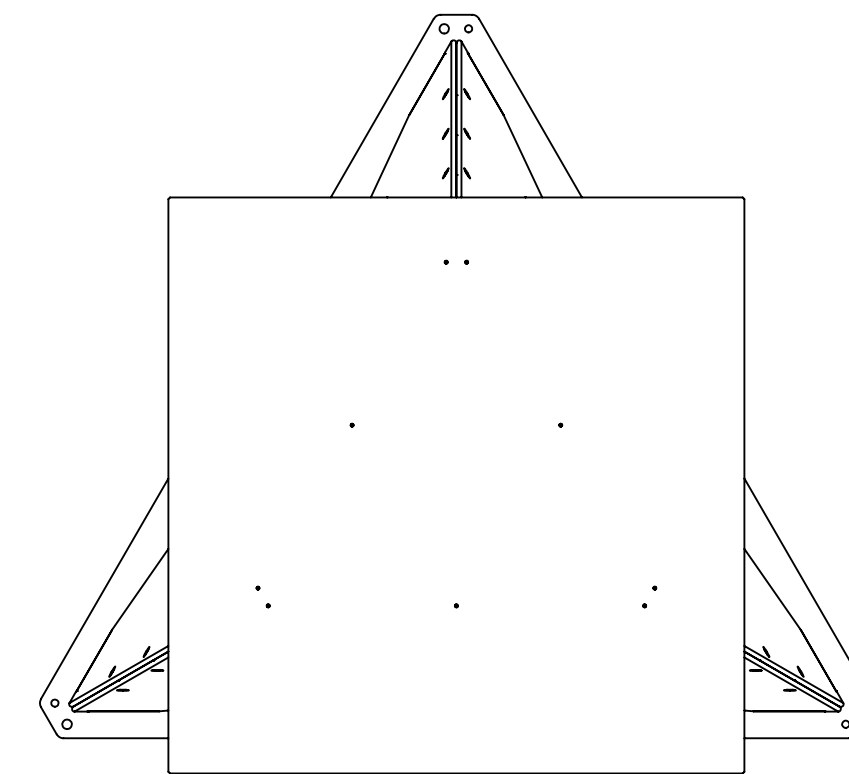
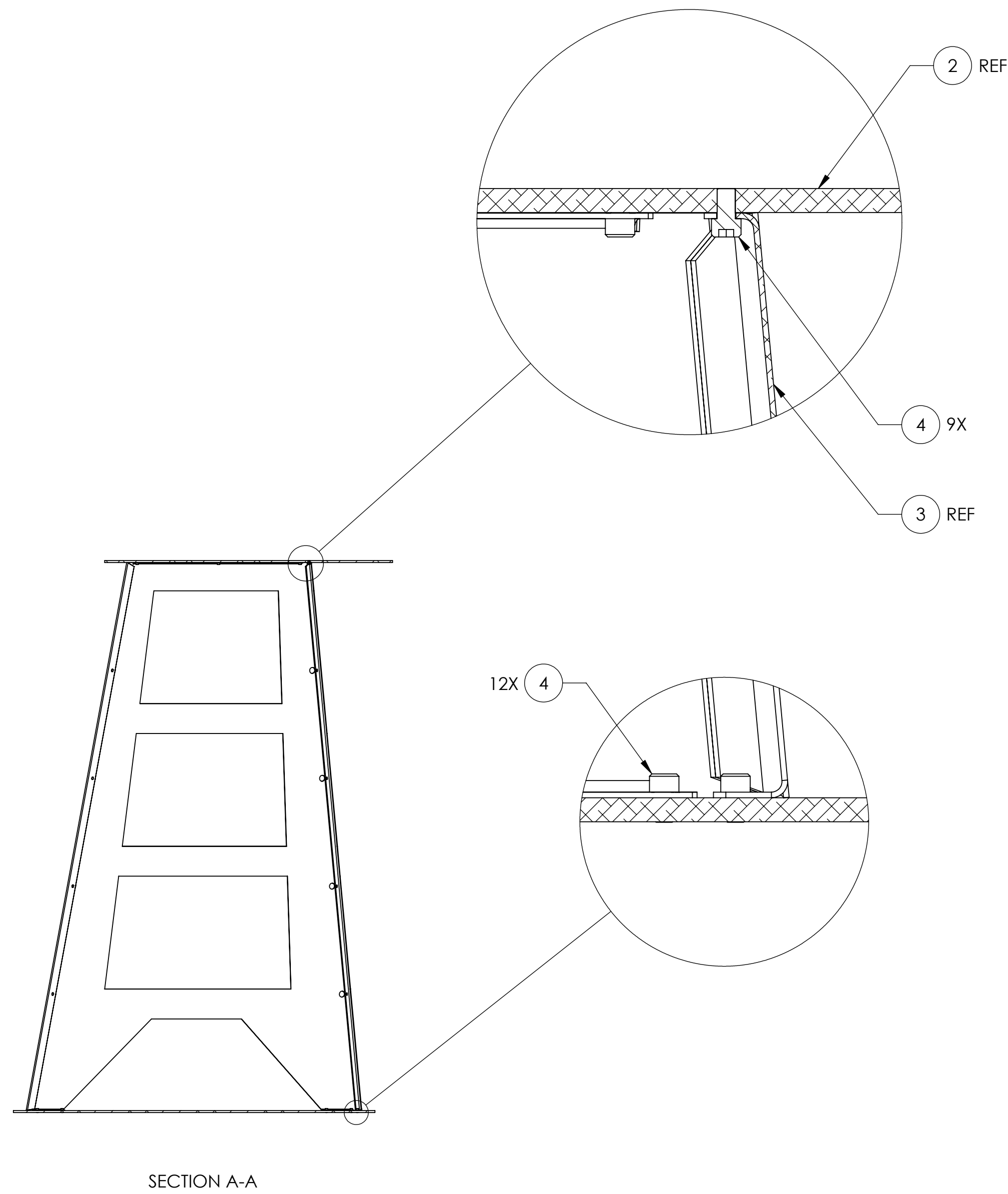


NOTES CONTINUED:  
 ① CLAMP THE THREE SIDE PANELS TO EACH OTHER USING ITEMS 4&5 (NOT SHOWN), 12 PLACES.

REV.	DATE	DCN #	DRAWING TREE #
v1	11 NOV 2009	E0900399-V1	-
-	-	-	-
-	-	-	-



ITEM NO.	PART NUMBER	DESCRIPTION	MATERIAL	REQ	SPARE	TOTAL
5	-	HEX NUT, #10-24	STEEL	12	2	14
4	-	SCREW, SOCKET HEAD CAP, #10-24 UNC-2A X 0.3125 LONG	STEEL	33	3	36
3	D0902326	ALIGO AOS PHOTCAL TX PIER SIDE PANEL MOCK-UP	6061 Alloy	3		3
2	D0902325	ALIGO AOS PHOTCAL TX BREADBOARD MOCK-UP	6061 Alloy	1		1
1	D0902324	ALIGO AOS PIER BASE MOCK-UP, 42 in	6061 Alloy	1		1

DIMENSIONS ARE IN TOLERANCES: .XX ± .XXX ± ANGULAR ± °		NOTES AND TOLERANCES: (UNLESS OTHERWISE SPECIFIED) MATERIAL N/A FINISH N/A μinch NEXT ASSY N/A		CALIFORNIA INSTITUTE OF TECHNOLOGY MASSACHUSETTS INSTITUTE OF TECHNOLOGY SYSTEM ADVANCED LIGO SUB-SYSTEM AOS		PART NAME <b>ALIGO AOS PhotCal TX Pier Mock-Up</b>		DESIGNER C. CONLEY 02 OCT 2009 SIZE DWG. NO. D0902650 REV. v1 DRAFTER C. CONLEY 11 OCT 2009 CHECKER APPROVAL		PARTS LIST SCALE: NONE PROJECTION:  SHEET 1 OF 1	
--------------------------------------------------------------------	--	---------------------------------------------------------------------------------------------------	--	-----------------------------------------------------------------------------------------------------------------	--	-------------------------------------------------------	--	-----------------------------------------------------------------------------------------------------------------------	--	-----------------------------------------------------	--

D0902650.dwg ALIGO AOS PhotCal TX Pier Mock-Up PART PDM REV: X-013 DRAWING PDM REV: X-010