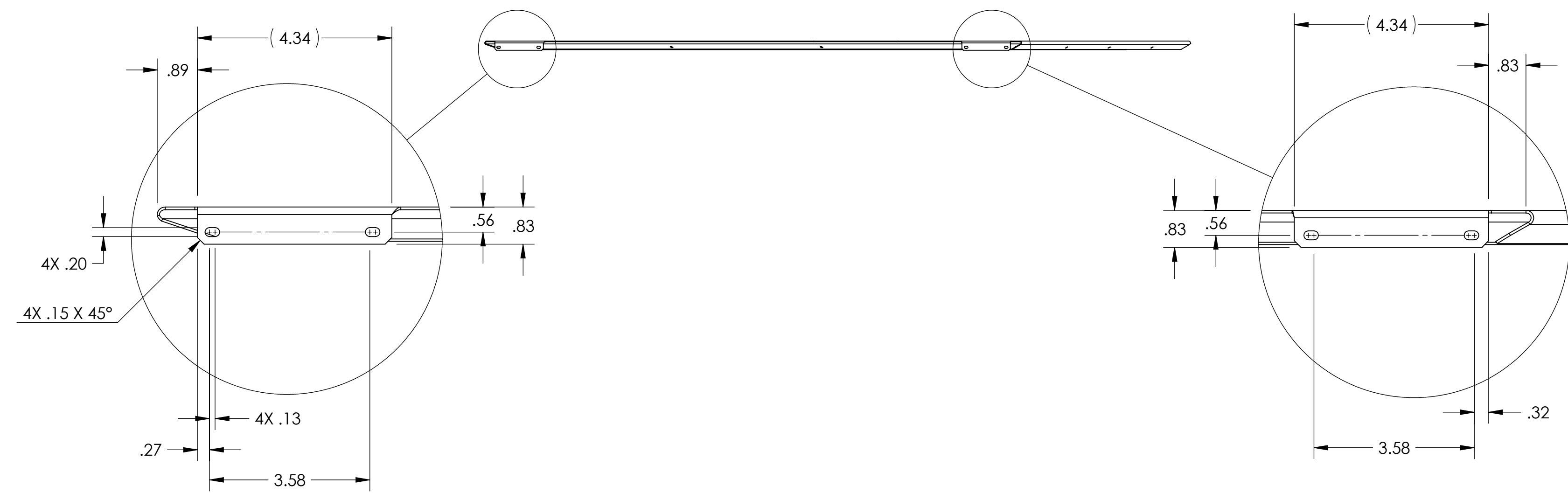
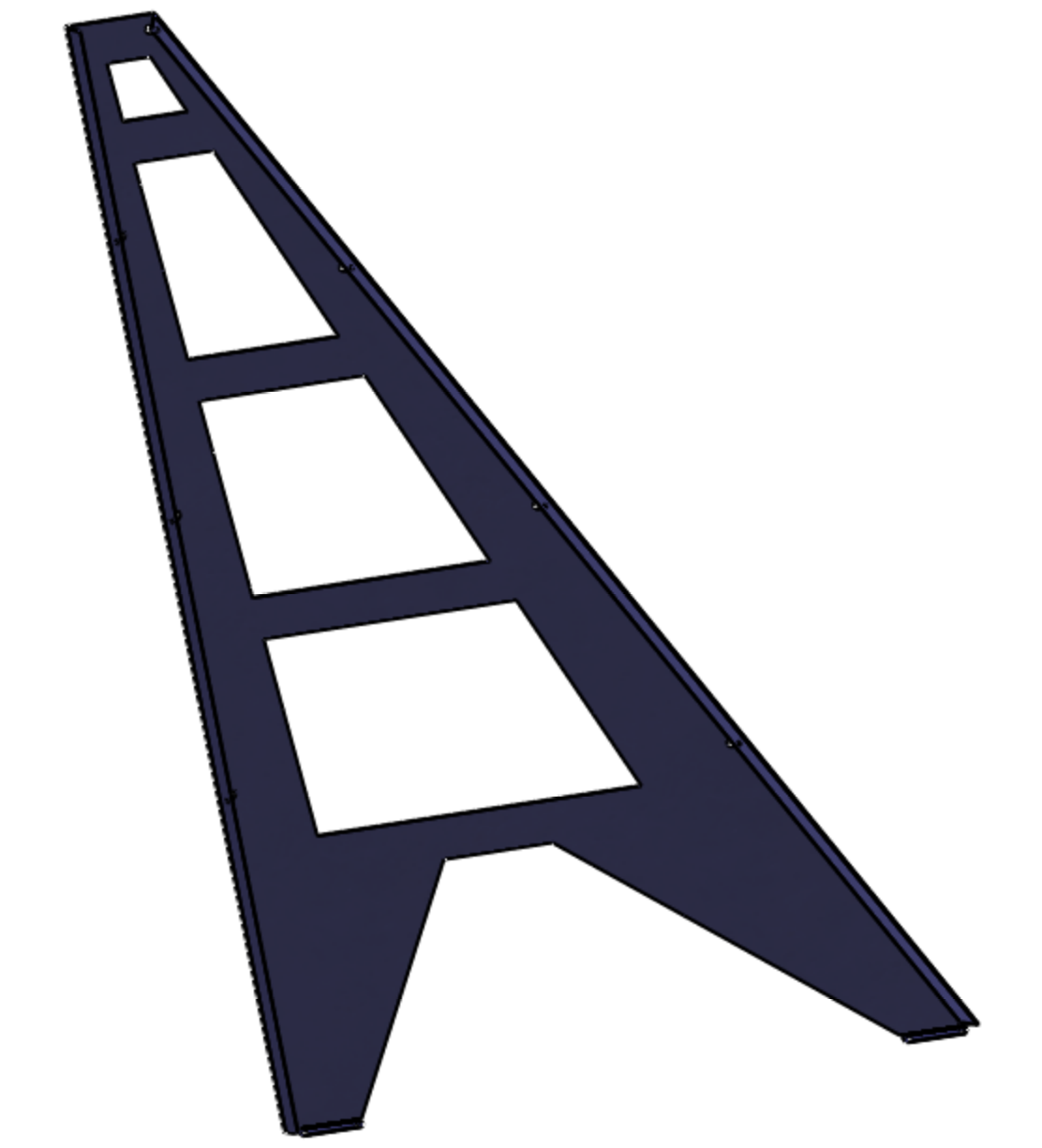
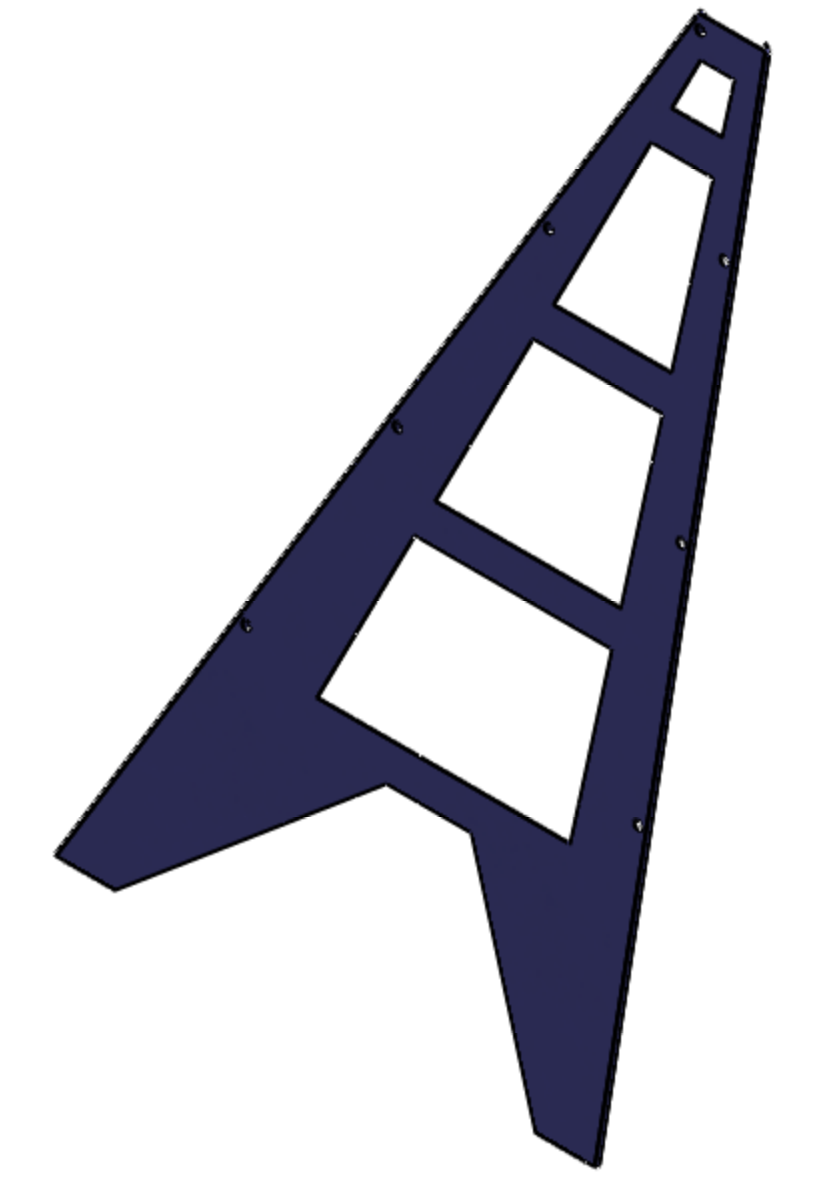
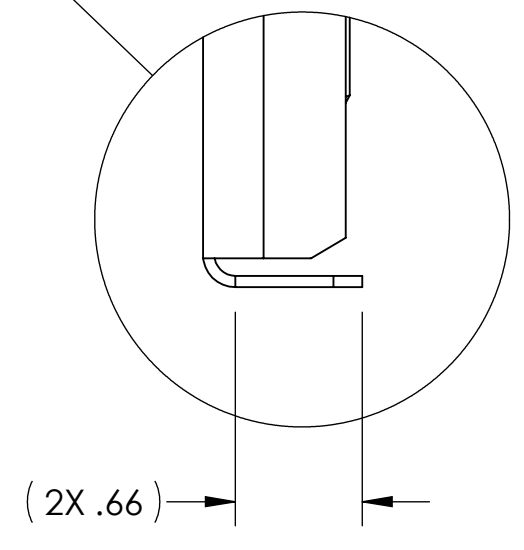
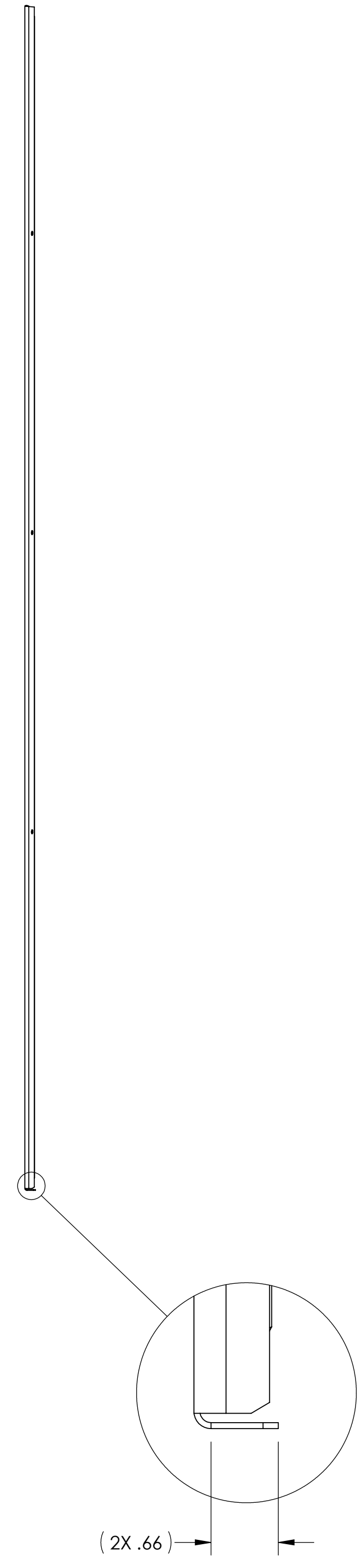
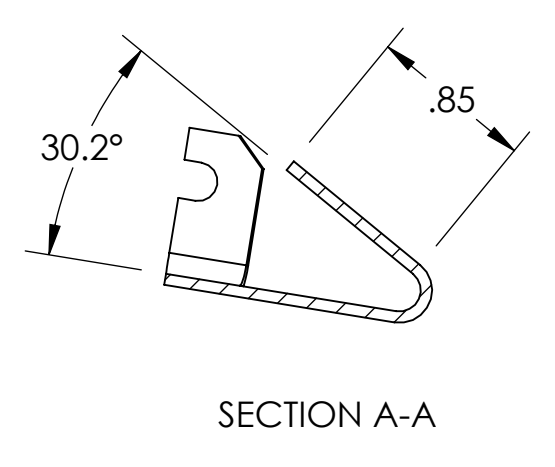
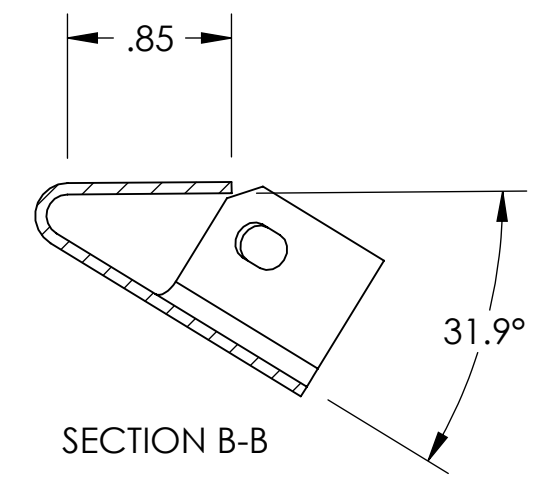
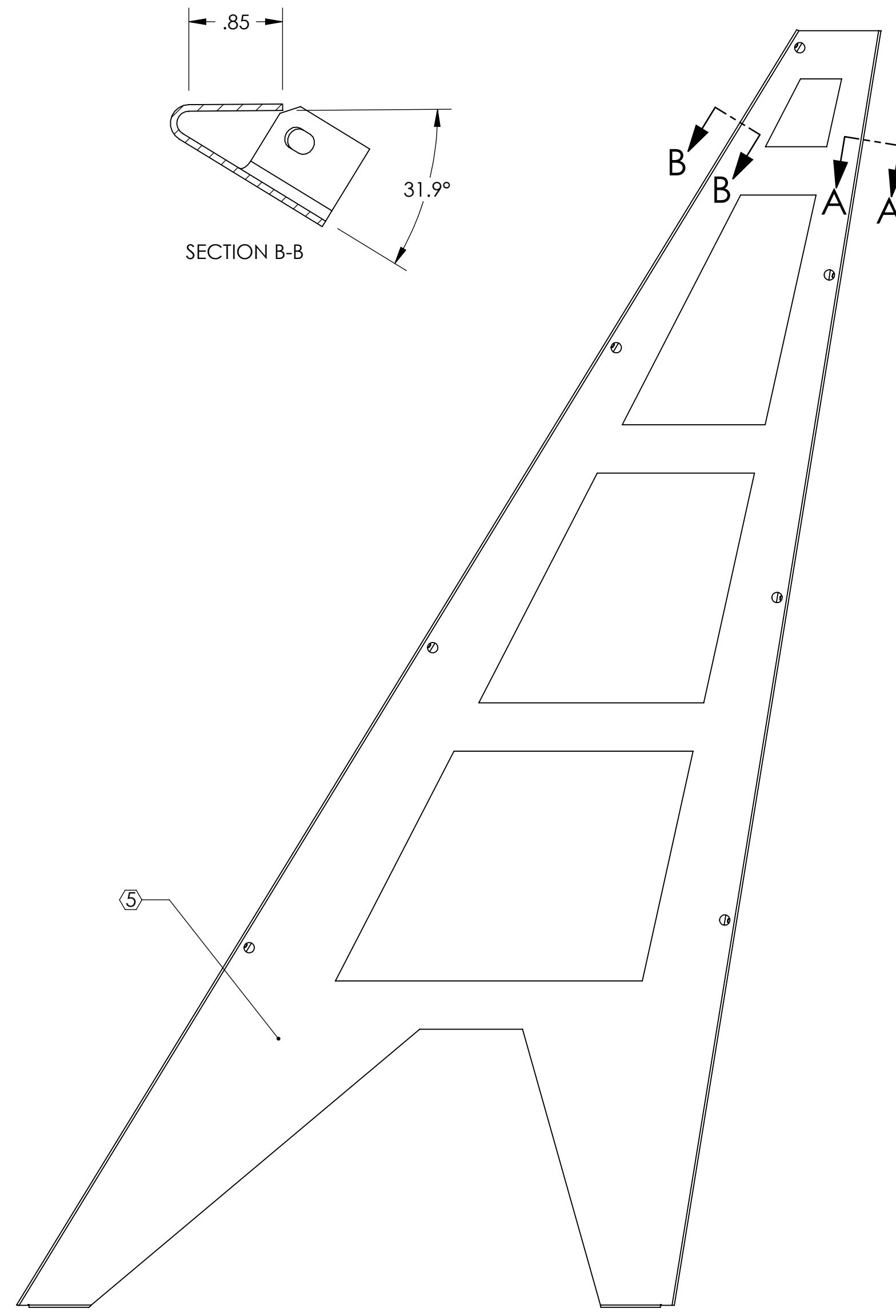


NOTES CONTINUED:

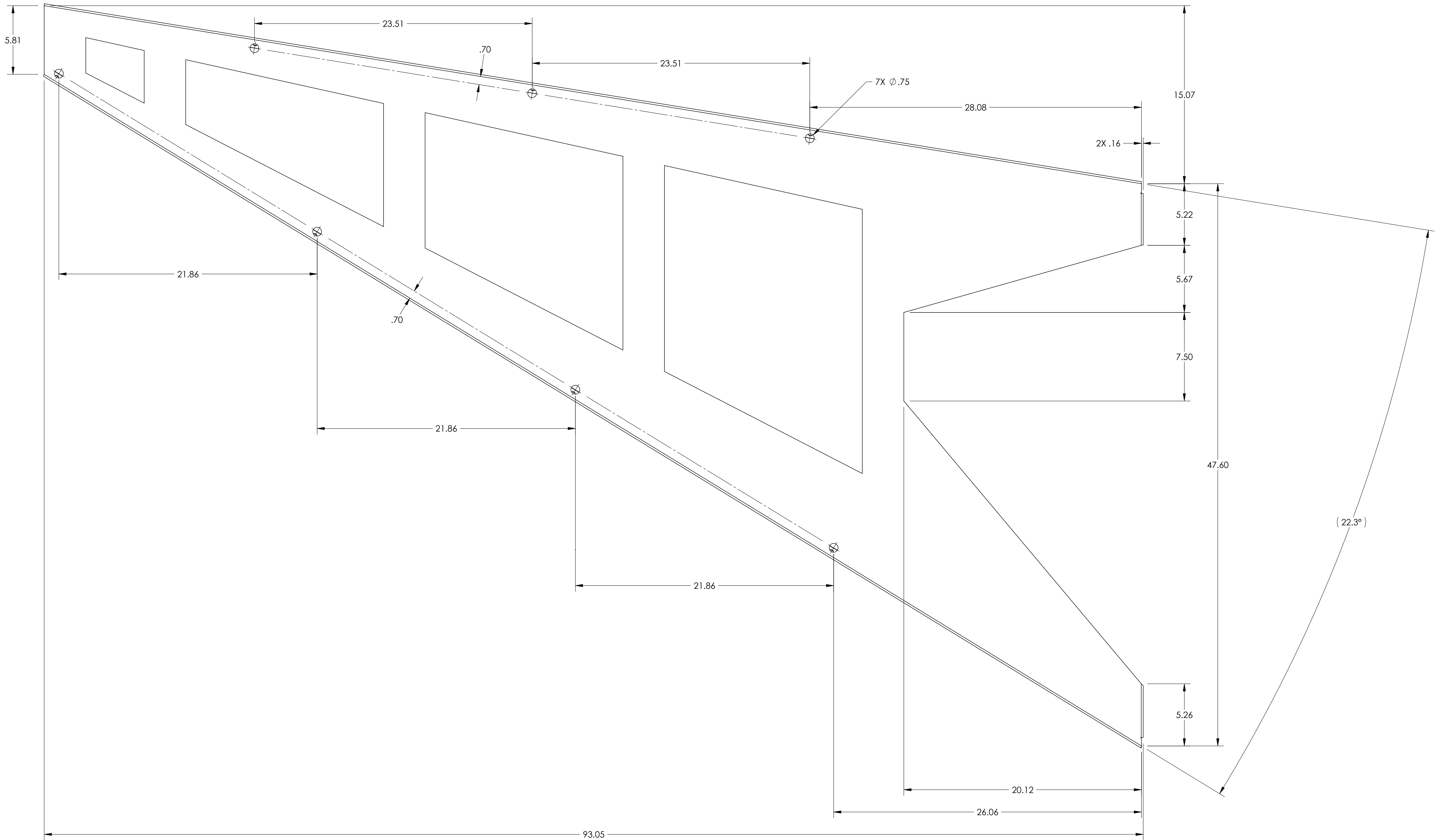
- ⑤ ON THE NEXT LINE BY A THREE DIGIT SERIAL NUMBER. SERIAL NUMBERS START AT 001 FOR THE FIRST ARTICLE AND PROCEED CONSECUTIVELY. USE .07" MIN HIGH CHARACTERS. EXAMPLE: DXXXXXX-VY, S/N 001. A VIBRATORY TOOL MAY BE USED.
- 6. ALL INSIDE BEND RADII .11 INCH.

REV.	DATE	DCN #	DRAWING TREE #
v1	06 NOV 2009	E0900399-v1	-
-	-	-	-
-	-	-	-



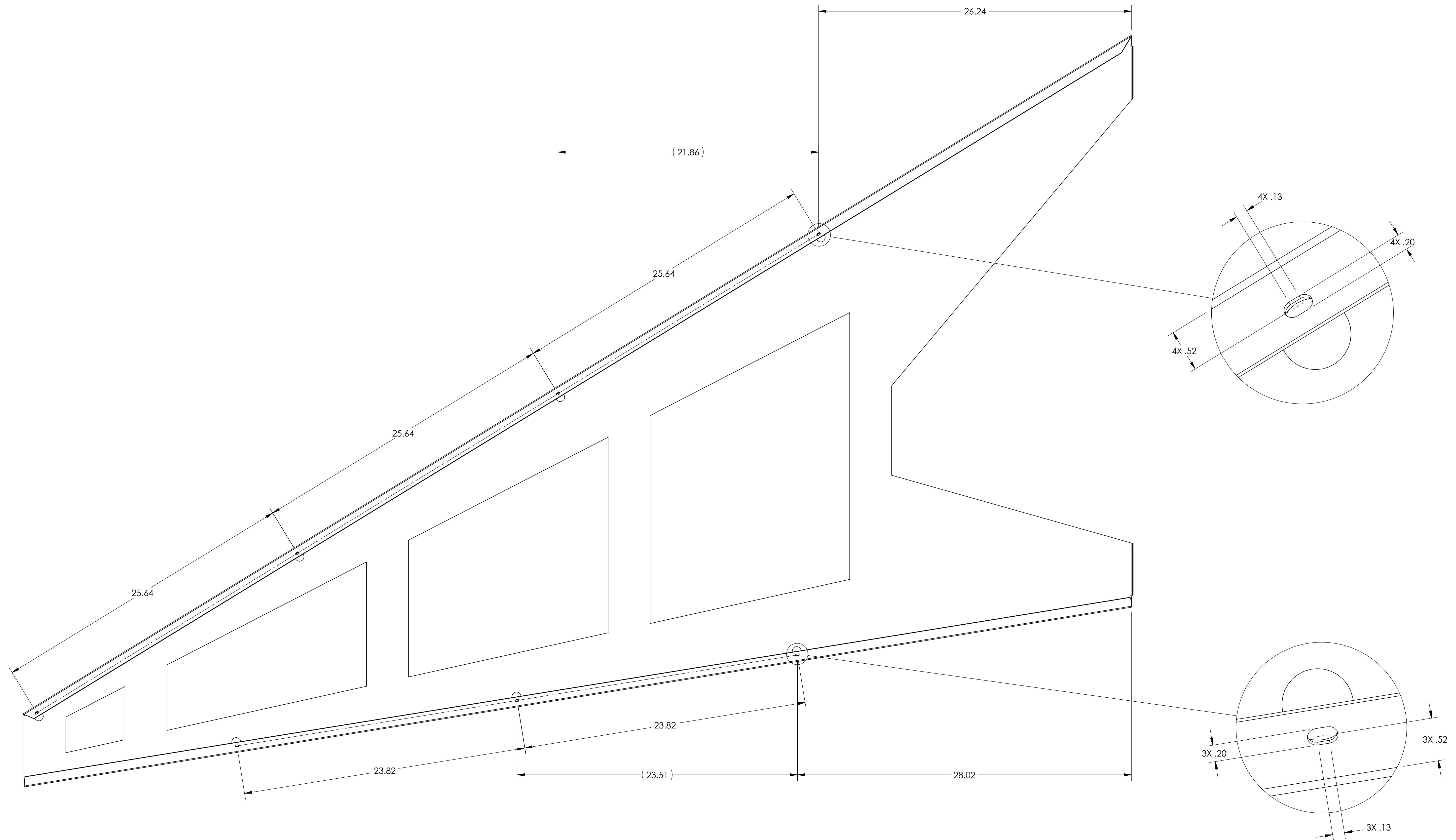
DIMENSIONS ARE IN INCHES		1. INTERPRET DRAWING PER ASME Y14.5-1994. 2. REMOVE ALL SHARP EDGES, R.02 MIN. 3. DO NOT SCALE FROM DRAWING. 4. ALL MACHINING FLUIDS MUST BE FULLY SYNTHETIC, FULLY WATER-SOLUBLE AND FREE OF SULFUR, SILICONE, AND CHLORINE.		CALIFORNIA INSTITUTE OF TECHNOLOGY MASSACHUSETTS INSTITUTE OF TECHNOLOGY		PART NAME <b>ALIGO AOS OPLEV &amp; PHOTCAL RX PIER SIDE PANEL1 RH MOCK-UP</b>	
TOLERANCES: .XX ± .01 .XXX ± .005		MATERIAL 6061 Alloy, .059 Sheet		FINISH μinch		SYSTEM ADVANCED LIGO	
ANGULAR ± 0.5°				NEXT ASSY D0902639		SUB-SYSTEM AOS	
				DESIGNER C. CONLEY		DATE 06 NOV 2009	
				DRAFTER C. CONLEY		SIZE D	
				CHECKER		DWG. NO. D0902640	
				APPROVAL		REV. v1	
				SCALE: NONE		PROJECTION:	
						SHEET 1 OF 4	

D0902640.dwg: AOS: Conley & Photcal: RX Pier Side Panel1 RH Mock-Up: PART PDM REV: X:007: DRAWING PDM REV: X:003



D:\02024\01\UGO ACS Optics & Photo RX Per Side Panel RH Mock-Up PART FDM REV. X.007 DRAWING FDM REV. X.003

DD902640.dwg ACS Optics & Photonics RFL Mock-Up, PART FDM REV. X.007, DRAWING FDM REV. X.003



D0902640.ctb LIGO ACS Optics & Photo RX Per Side Panel RH Mock-Up PART PDM REV. X.007 DRAWING PDM REV. X.003

