

NOTES CONTINUED:  
 ⑤ SCRIBE, ENGRAVE, OR MECHANICALLY STAMP (NO INKS OR DYES) DRAWING PART NUMBER AND REVISION ON NOTED SURFACE FOLLOWED ON THE NEXT LINE BY A THREE DIGIT SERIAL NUMBER. SERIAL NUMBERS START AT 001 FOR THE FIRST ARTICLE AND PROCEED CONSECUTIVELY. USE .07" HIGH CHARACTERS. EXAMPLE: DXXXXXX-VY, S/N 001. A VIBRATORY TOOL MAY BE USED.

Estimated Weight:  
6500 lbs

REV.	DATE	DCN #	DRAWING TREE #
-	-	-	-
-	-	-	-
-	-	-	-

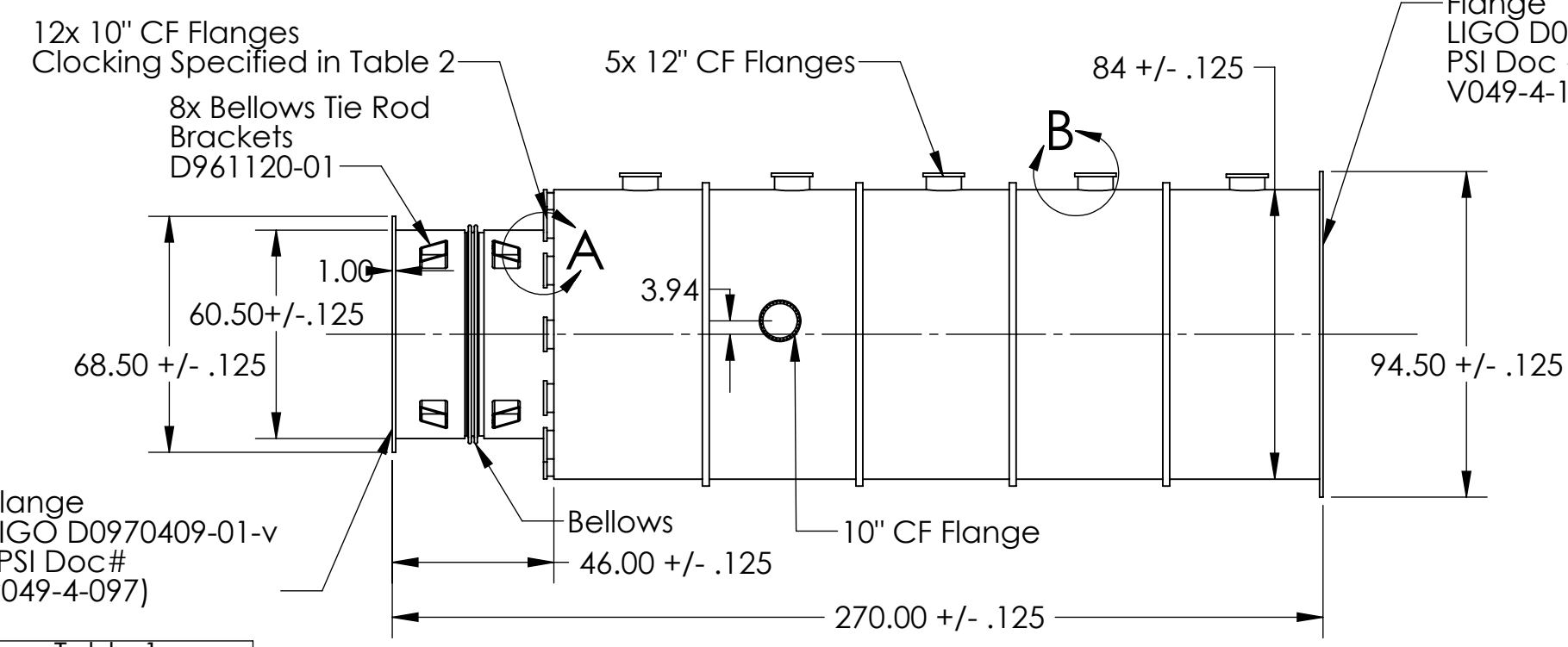
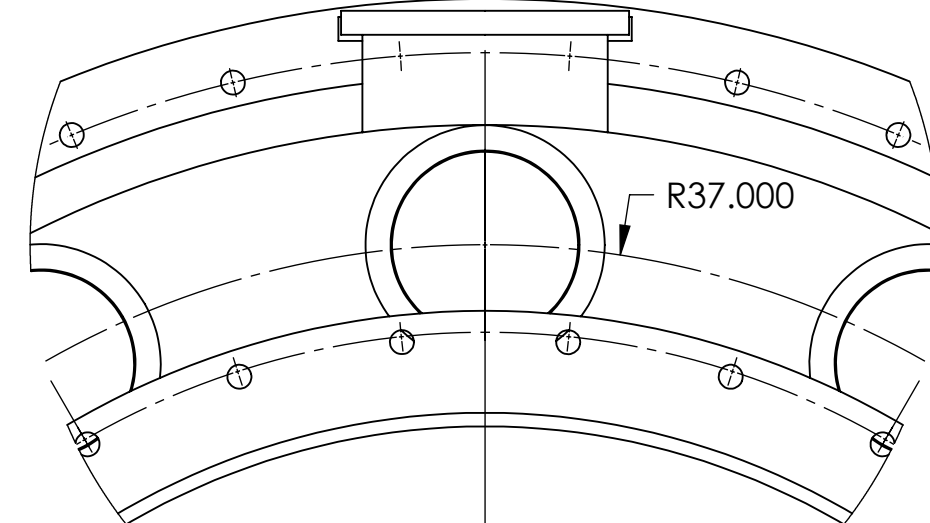
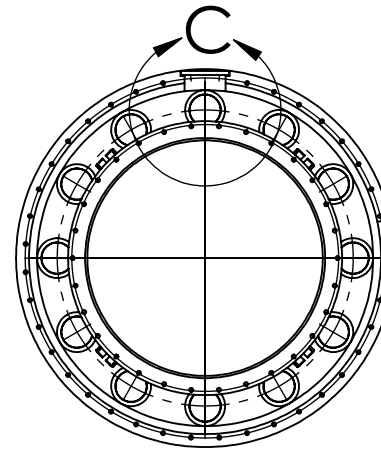
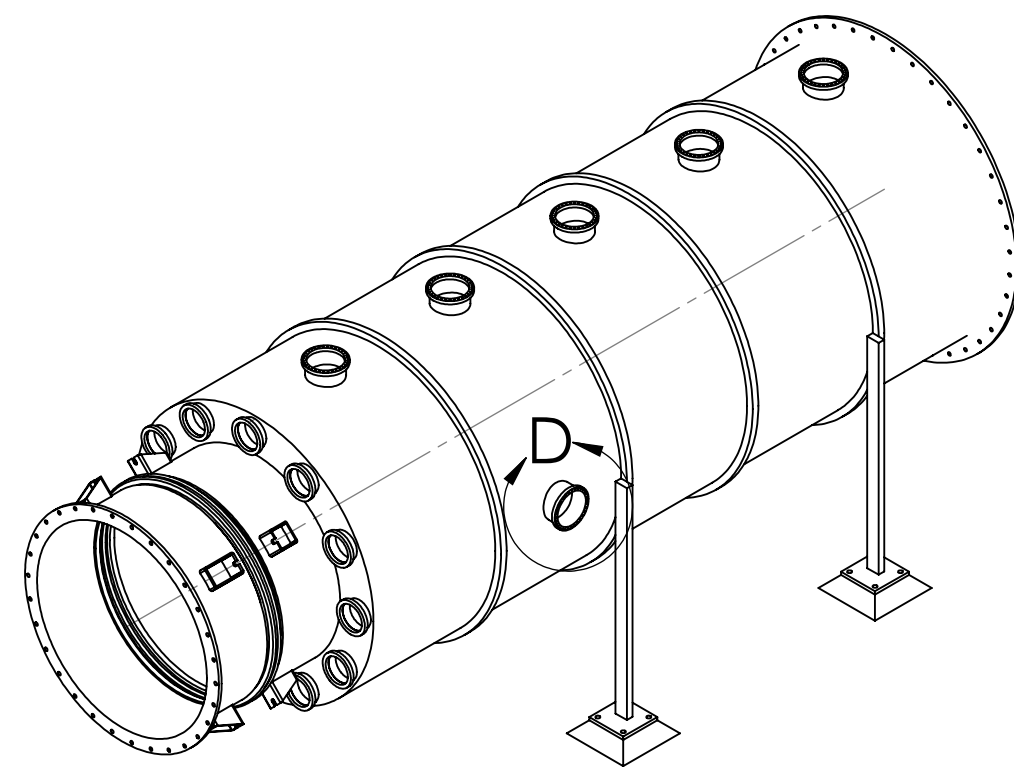
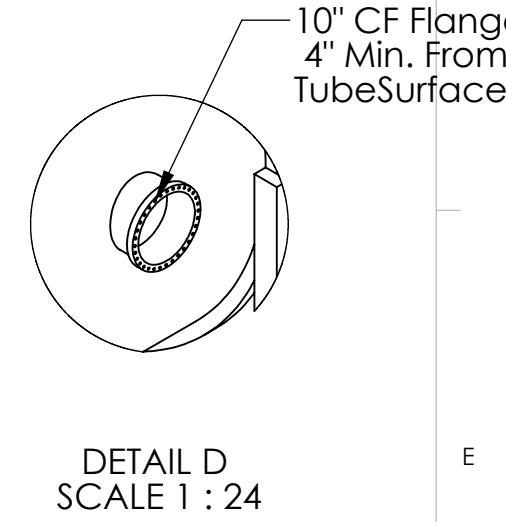
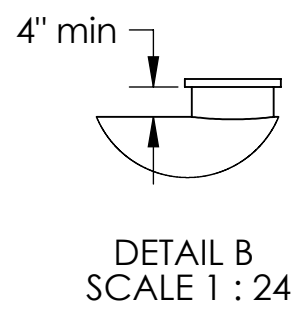
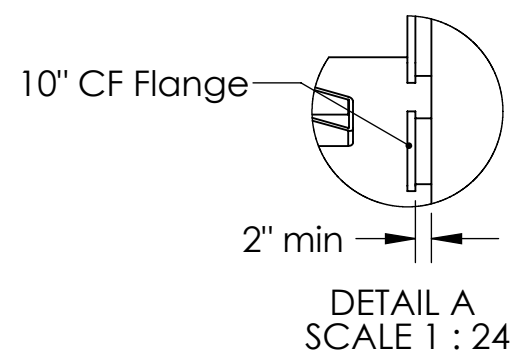


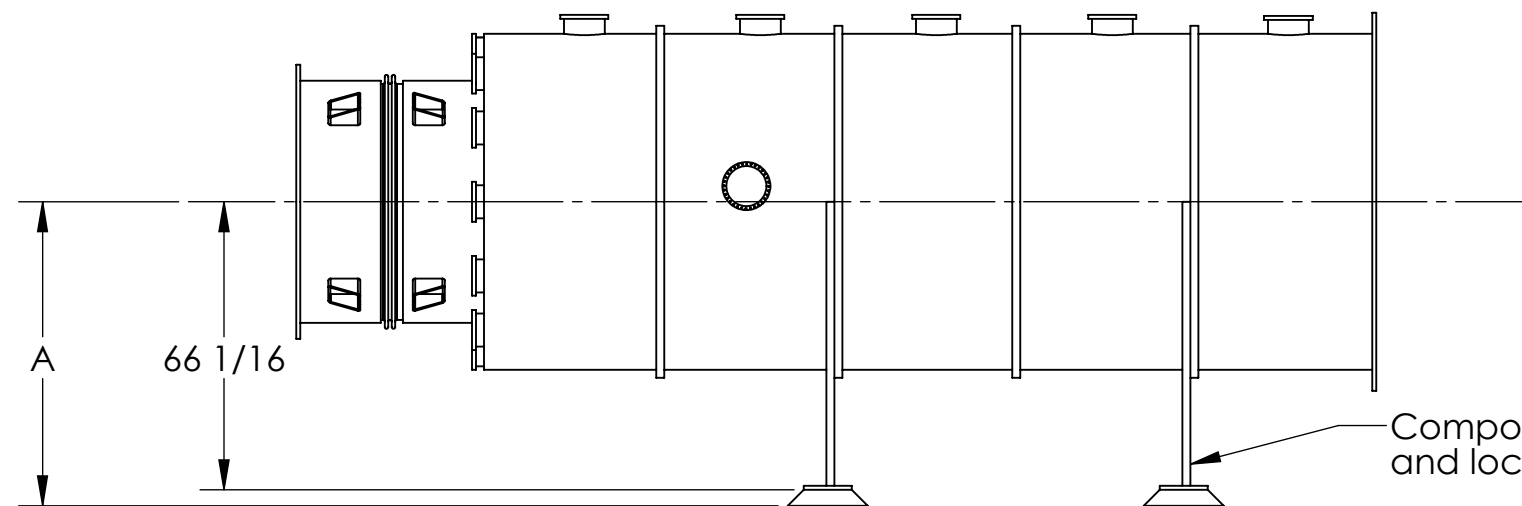
Table 1  
6 Required,  
Tag Numbers

WAMCA1
WAMCA2
WAMCA3
WAMCA4
LAMCA1
LAMCA2

Table 2 Viewport Clocking  
Where 12 O'clock = 0°

Hole Position	LAMCA# WAMCA#
1	30°
2	60°
3	90°
4	120°
5	150°
6	180°
7	210°
8	240°
9	270°
10	300°
11	330°
12	360°

Tag No.	Dimension A
LAMCA#	69 1/16 Ref
WAMCA#	70 1/16 Ref



Component Legs, Stiffeners and Anchor Pads to be sized and located by the Seller. General locations shown.

NOTES AND TOLERANCES: (UNLESS OTHERWISE SPECIFIED)  
 1. REMOVE ALL SHARP EDGES, R.02 MIN.  
 2. DO NOT SCALE FROM DRAWING.  
 3. DESIGN AND FABRICATE THIS COMPONENT PER LIGO SPECIFICATION E0900411-V1

DIMENSIONS ARE IN  
 TOLERANCES:  
 .XX ±  
 .XXX ±  
 ANGULAR ± °

MATERIAL: AISI 304  
 FINISH: μinch

**LIGO** CALIFORNIA INSTITUTE OF TECHNOLOGY  
 MASSACHUSETTS INSTITUTE OF TECHNOLOGY  
 SYSTEM SUB-SYSTEM  
 NEXT ASSY

PART NAME: ADLIGO MCA TUBE SECTION  
 DESIGNER: [ ]  
 DRAFTER: [ ]  
 CHECKER: [ ]  
 APPROVAL: [ ]  
 SIZE: c DWG. NO.: D0902632  
 SCALE: 1:48 PROJECTION: [ ] SHEET 1 OF 1  
 REV. 6