

NOTES CONTINUED:
 5. SCRIBE, ENGRAVE, OR MECHANICALLY STAMP (NO INKS OR DYES) DRAWING PART NUMBER AND REVISION ON NOTED SURFACE FOLLOWED ON THE NEXT LINE BY A THREE DIGIT SERIAL NUMBER. SERIAL NUMBERS START AT 001 FOR THE FIRST ARTICLE AND PROCEED CONSECUTIVELY. USE .07" HIGH CHARACTERS. EXAMPLE: DXXXXXX-VY, S/N 001. A VIBRATORY TOOL MAY BE USED.

Estimated Weight:
6500 lbs

REV.	DATE	DCN #	DRAWING TREE #
-	-	-	-
-	-	-	-
-	-	-	-

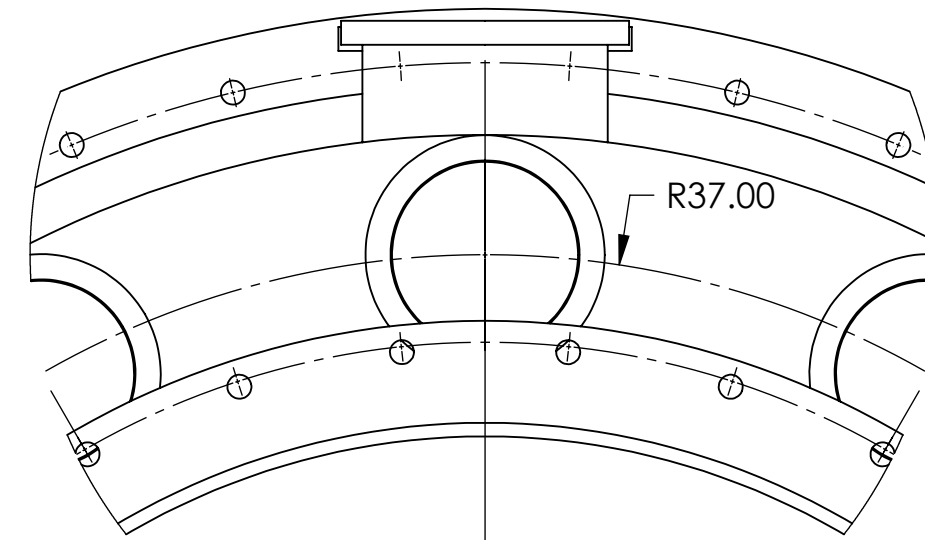
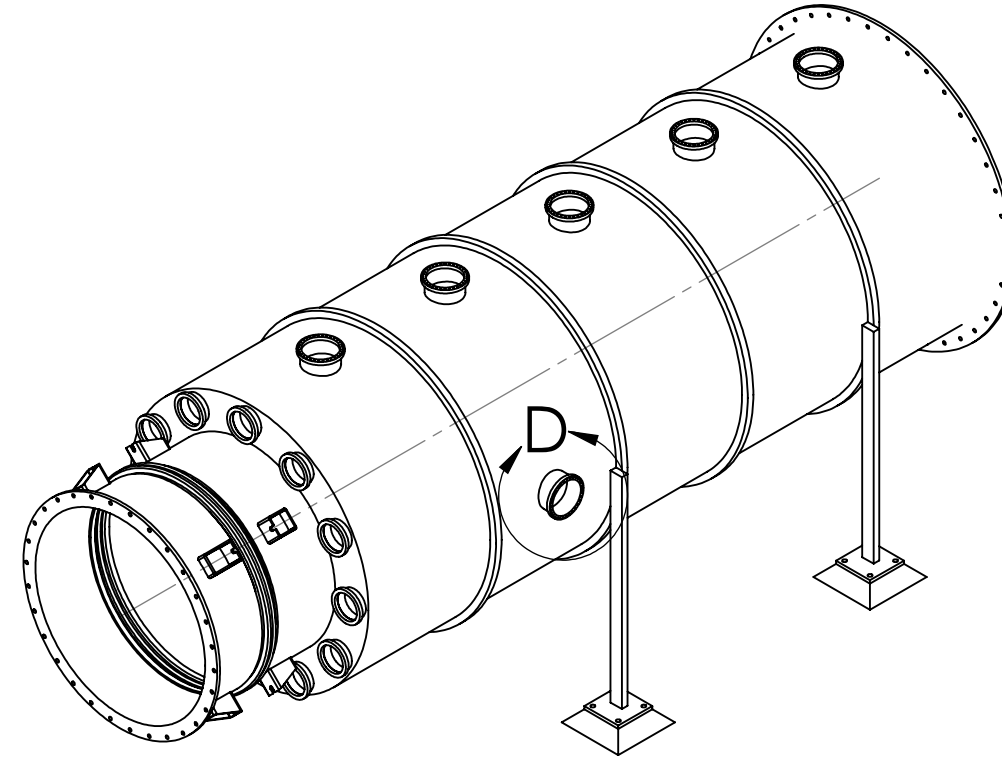
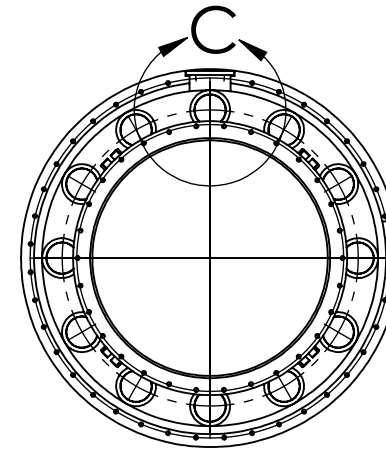
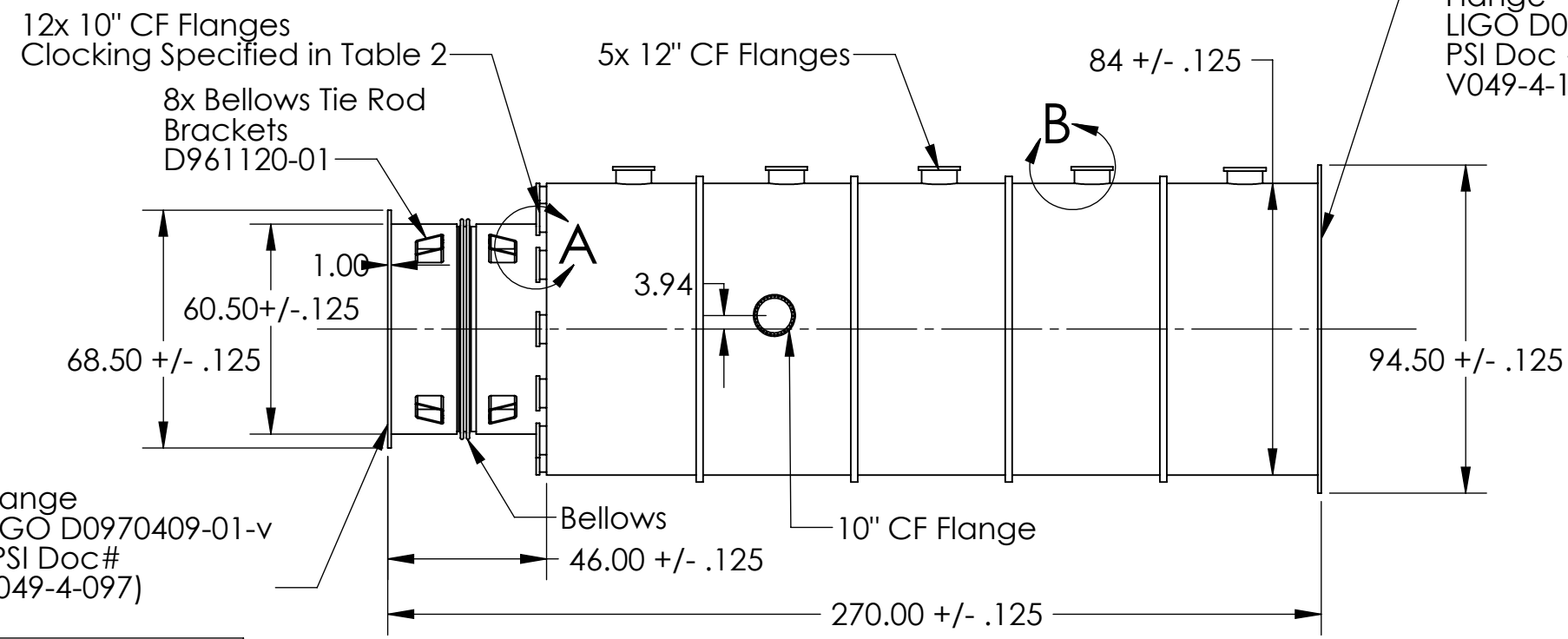
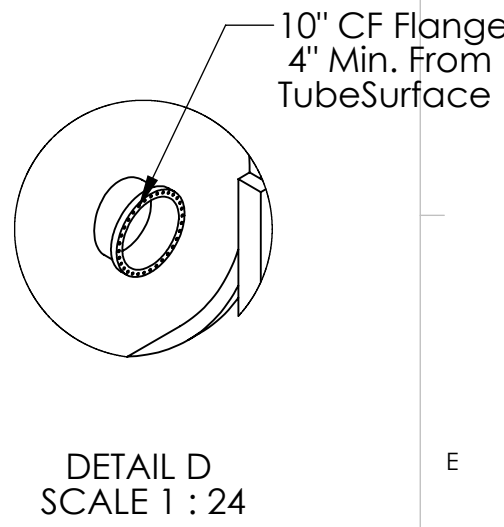
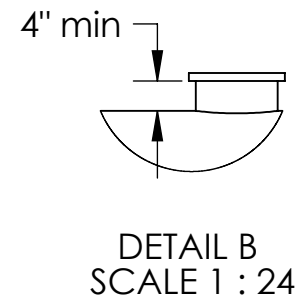
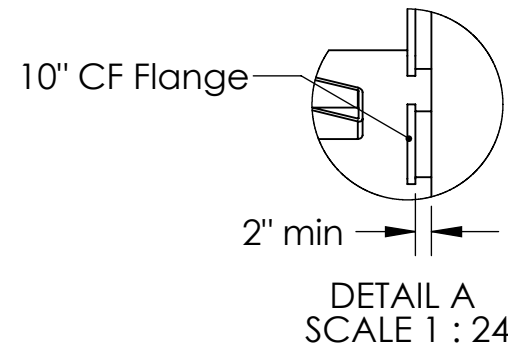
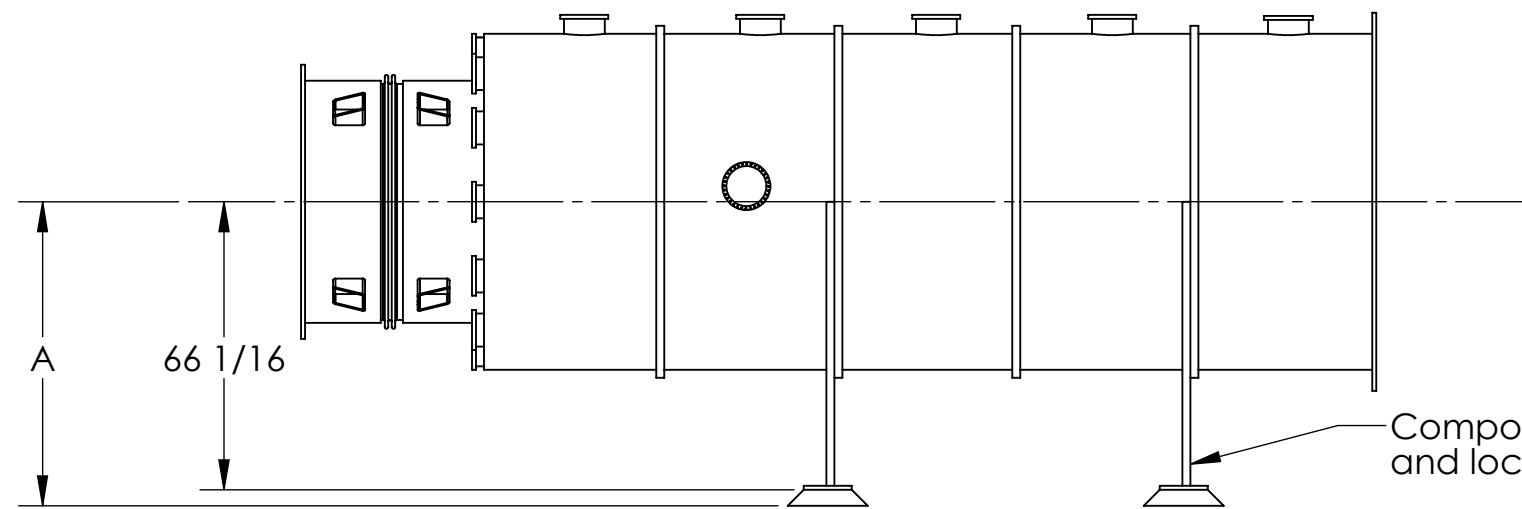


Table 1 6 Required, Tag Numbers	
WAMCA1	
WAMCA2	
WAMCA3	
WAMCA4	
LAMCA1	
LAMCA2	

Tag No.	Dimension A
LAMCA#	69 1/16 Ref
WAMCA#	70 1/16 Ref



NOTES AND TOLERANCES: (UNLESS OTHERWISE SPECIFIED)
 1. REMOVE ALL SHARP EDGES, R.02 MIN.
 2. DO NOT SCALE FROM DRAWING.
 3. DESIGN AND FABRICATE THIS COMPONENT PER LIGO SPECIFICATION E0900411-V1

DIMENSIONS ARE IN

TOLERANCES:
 .XX ±
 .XXX ±

ANGULAR ± °

MATERIAL AISI 304
FINISH μinch

LIGO CALIFORNIA INSTITUTE OF TECHNOLOGY
 MASSACHUSETTS INSTITUTE OF TECHNOLOGY

SYSTEM **SUB-SYSTEM**

NEXT ASSY

PART NAME

ADLIGO MCA TUBE SECTION

DESIGNER	SIZE	DWG. NO.	REV.
	c	D0902632	5
CHECKER	APPROVAL	SCALE: 1:48	PROJECTION:

SHEET 1 OF 1