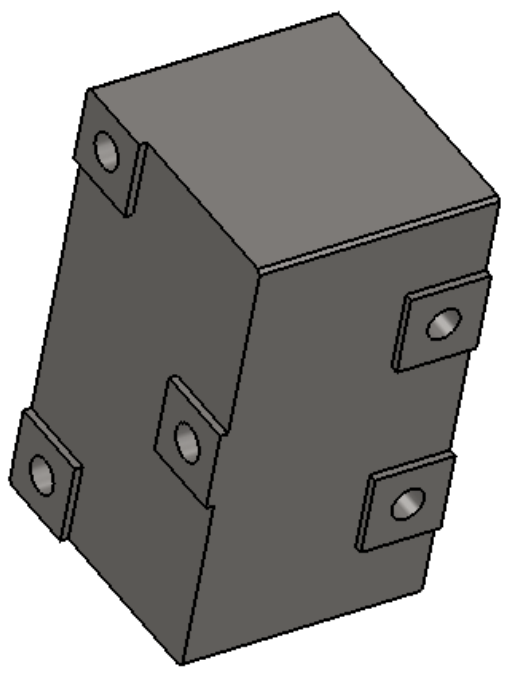
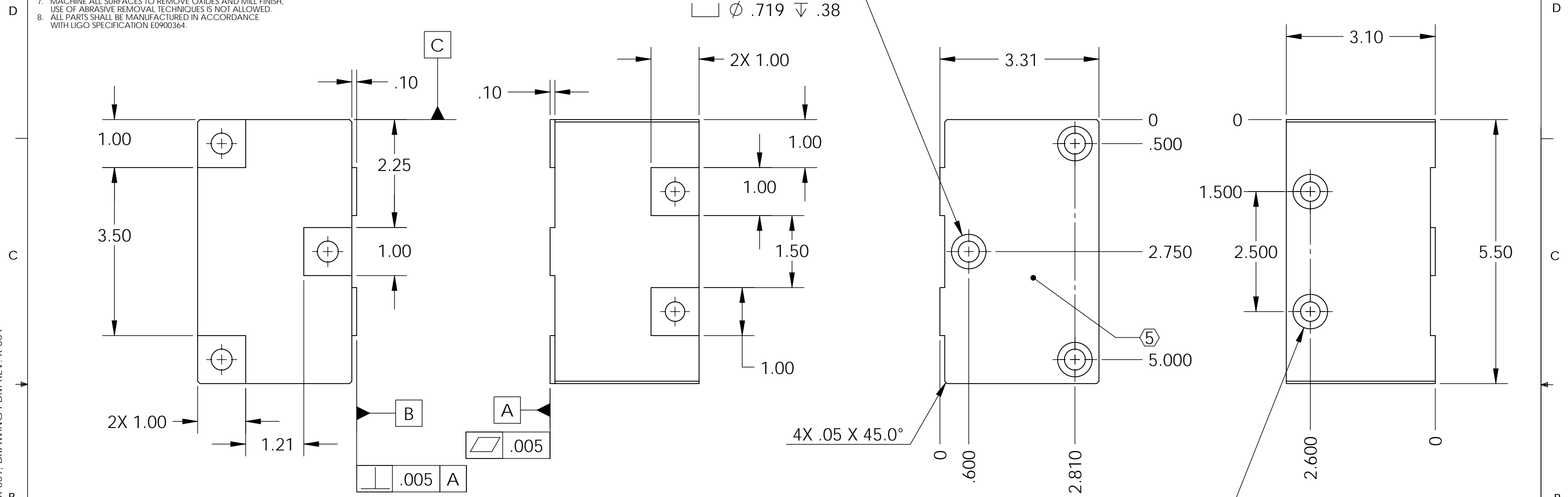


D0902613 Lateral Trim Mass 15 Lbs., Stage 1, aLIGO BSC-ISI, PART PDM REV: X-009, DRAWING PDM REV: X-004

**NOTES CONTINUED:**  
 5. SCRIBE, ENGRAVE, OR MECHANICALLY STAMP (NO INKS OR DYES) DRAWING PART NUMBER, REVISION (AND VARIANT OR "TYPE" IF APPLICABLE ON NOTED SURFACE OF PART FOLLOWED ON THE NEXT LINE WITH A THREE DIGIT SERIAL NUMBER. SERIAL NUMBERS START AT 001 FOR THE FIRST ARTICLE AND PROCEED CONSECUTIVELY. USE MINIMUM 0.12 HIGH CHARACTERS, UNLESS THE SIZE OF THE PART DICTATES SMALLER CHARACTERS. A VIBRATORY TOOL MAY BE USED. EXAMPLE DXXXXXX-VY, TYPE-XX, S/N XXX.  
 6. APPROXIMATE WEIGHT = 14.65 LB.  
 7. MACHINE ALL SURFACES TO REMOVE OXIDES AND MILL FINISH. USE OF ABRASIVE REMOVAL TECHNIQUES IS NOT ALLOWED.  
 8. ALL PARTS SHALL BE MANUFACTURED IN ACCORDANCE WITH LIGO SPECIFICATION E0900364.

REV.	DATE	DCN #	DRAWING TREE #
v1	12 Mar. 2010	E0900495	E1000025



NOTES AND TOLERANCES: (UNLESS OTHERWISE SPECIFIED)				LIGO CALIFORNIA INSTITUTE OF TECHNOLOGY MASSACHUSETTS INSTITUTE OF TECHNOLOGY		PART NAME	
DIMENSIONS ARE IN INCHES				ADVANCED LIGO		LATERAL TRIM MASS 15 LBS, STAGE 1, aLIGO BSC ISI	
TOLERANCES: .XX ± .015 .XXX ± .005				SUB-SYSTEM SEI		DESIGNER	F.MATICHARD 15 Jan. 2010
ANGULAR ± .5°				NEXT ASSY D0901180		DRAFTER	M.HILLARD 15 Jan. 2010
MATERIAL AISI 304		FINISH 63 μinch		CHECKER	A.STEIN 15 Jan. 2010	SIZE	DWG. NO. B D0902613
				APPROVAL	K.MASON 15 Jan. 2010	REV.	v1
						SCALE: 1:2	PROJECTION:
						SHEET 1 OF 1	