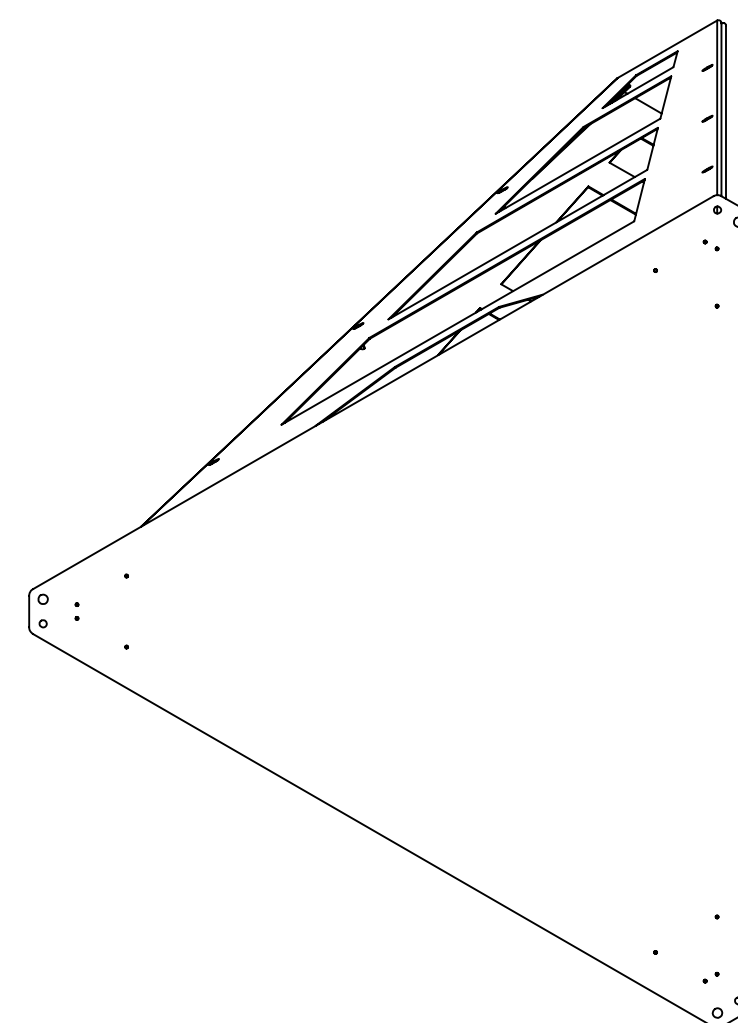
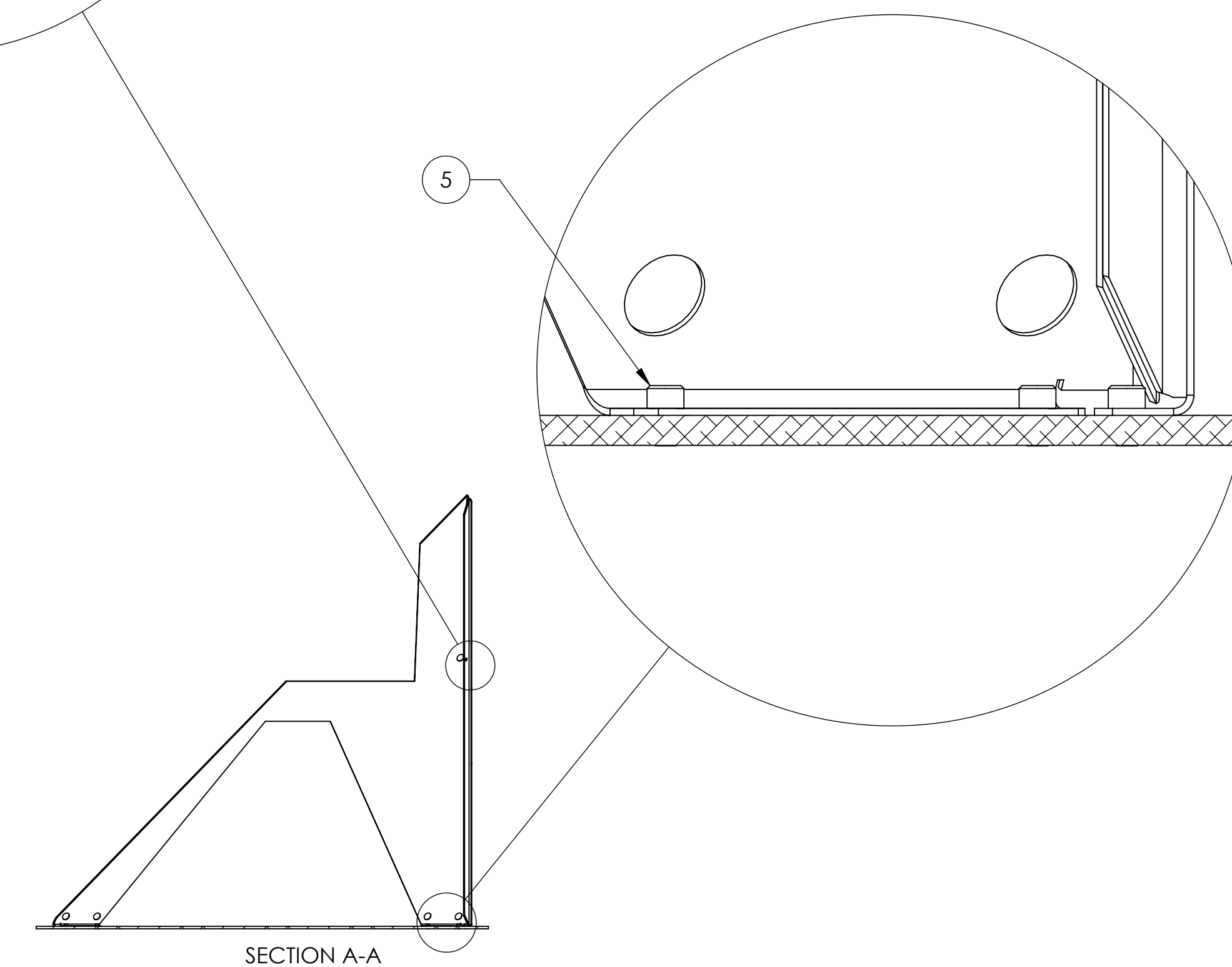
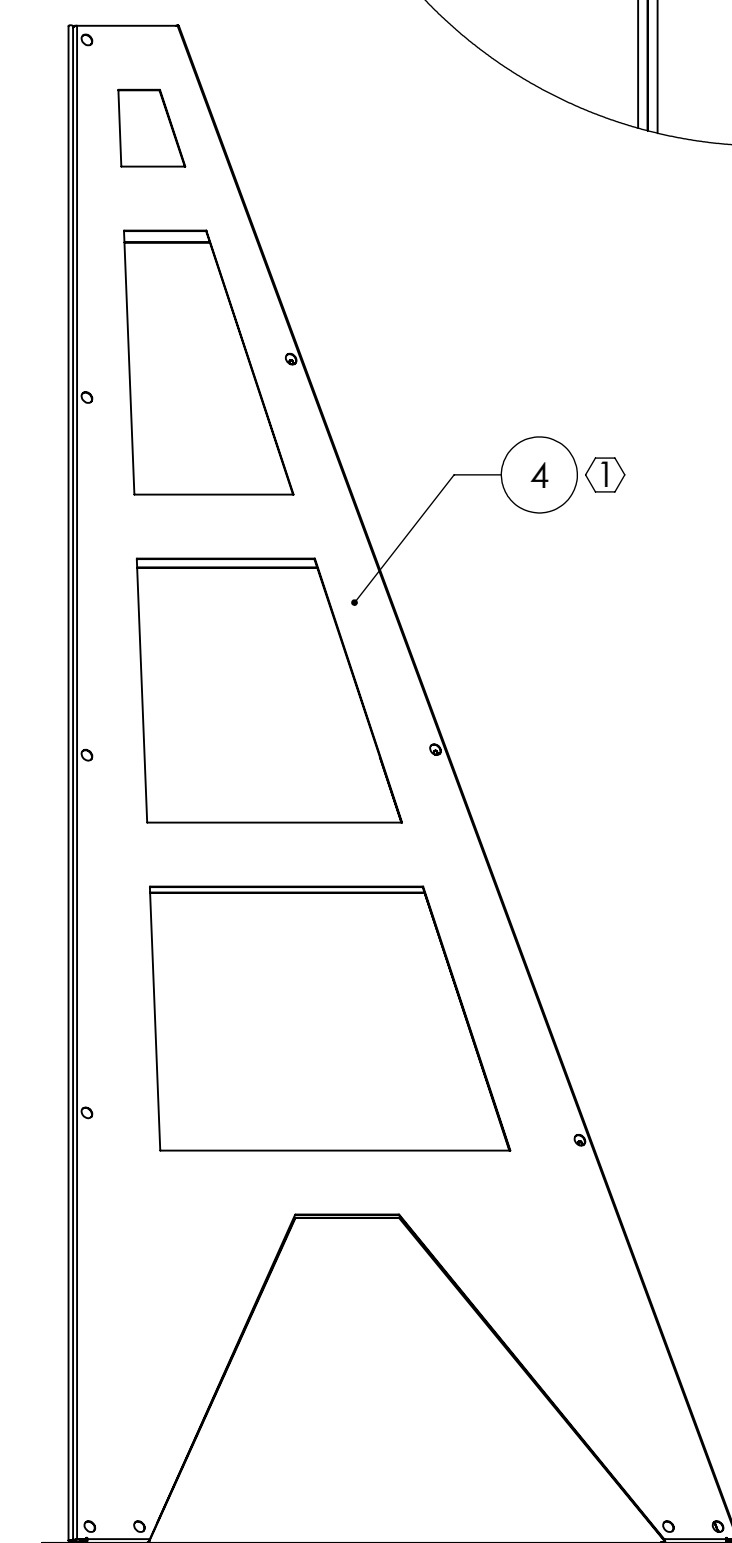
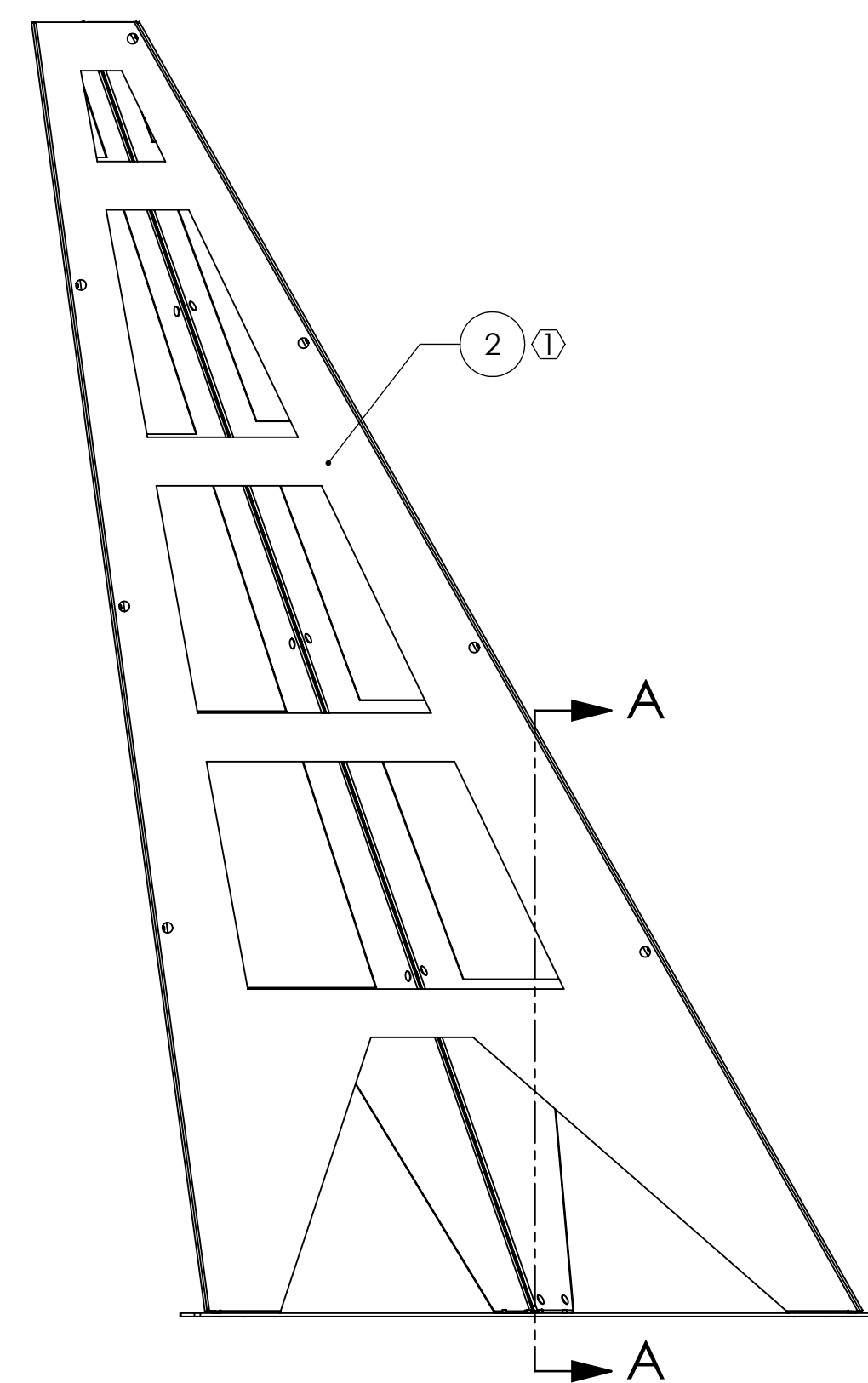
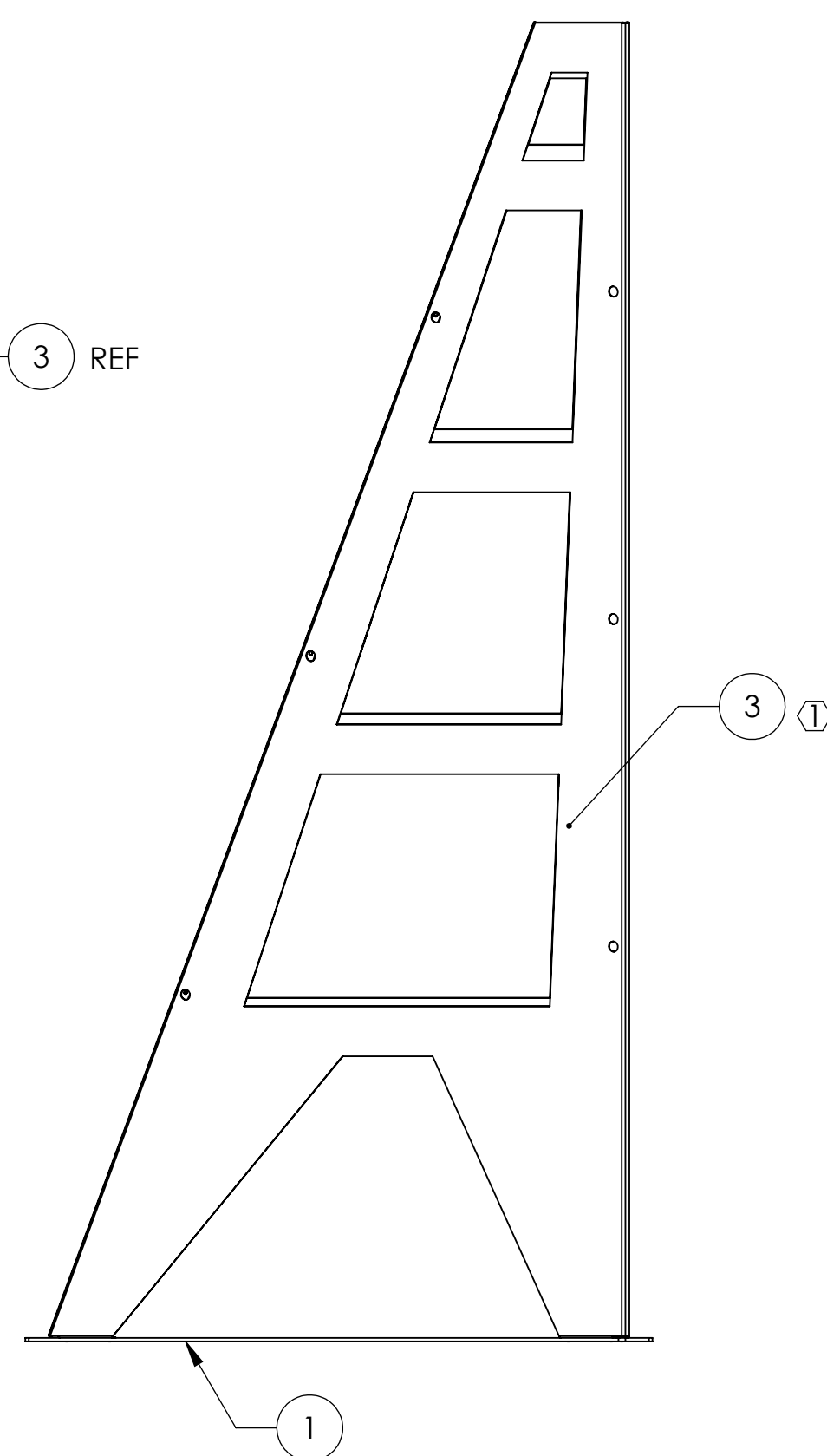
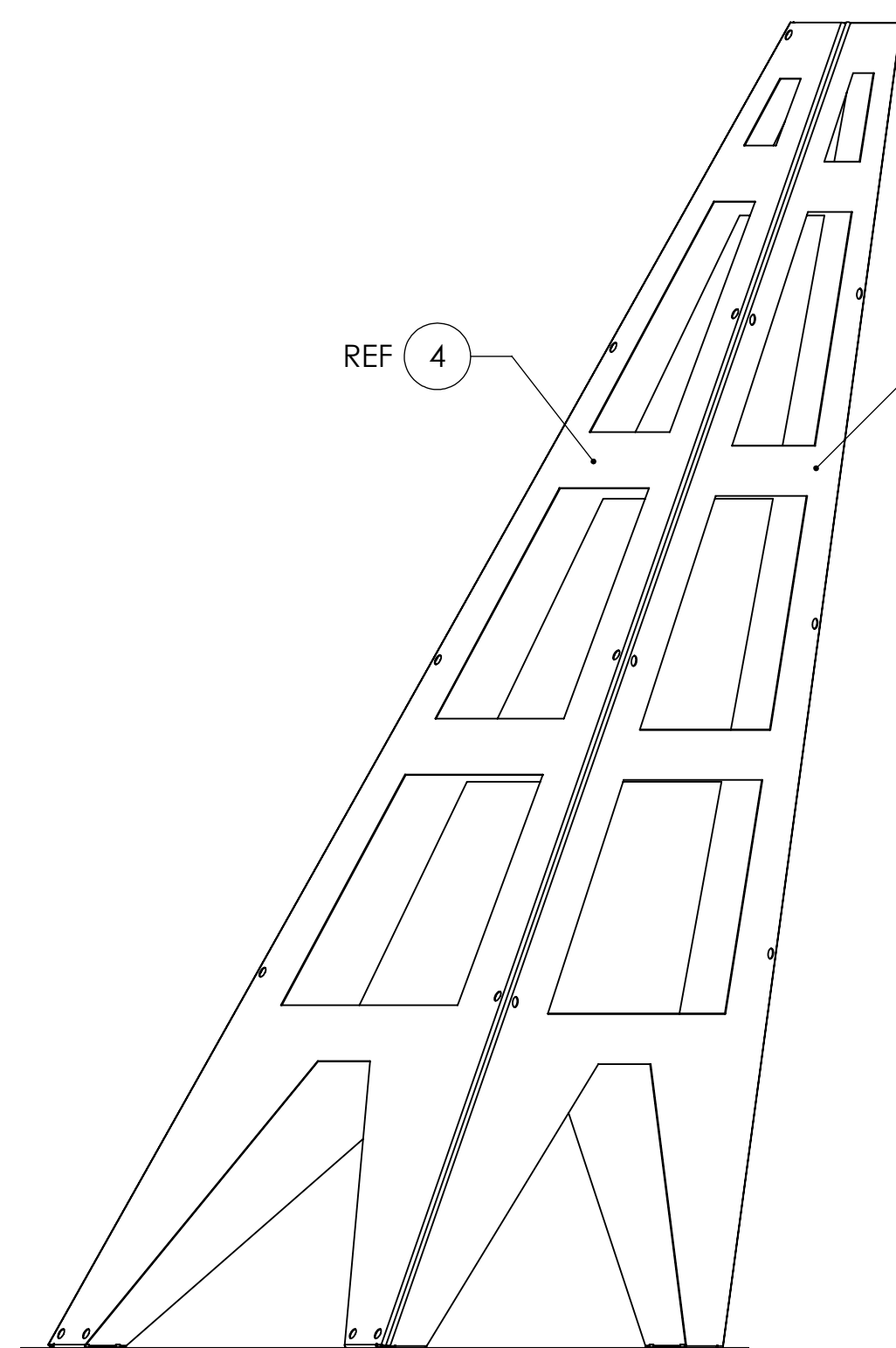
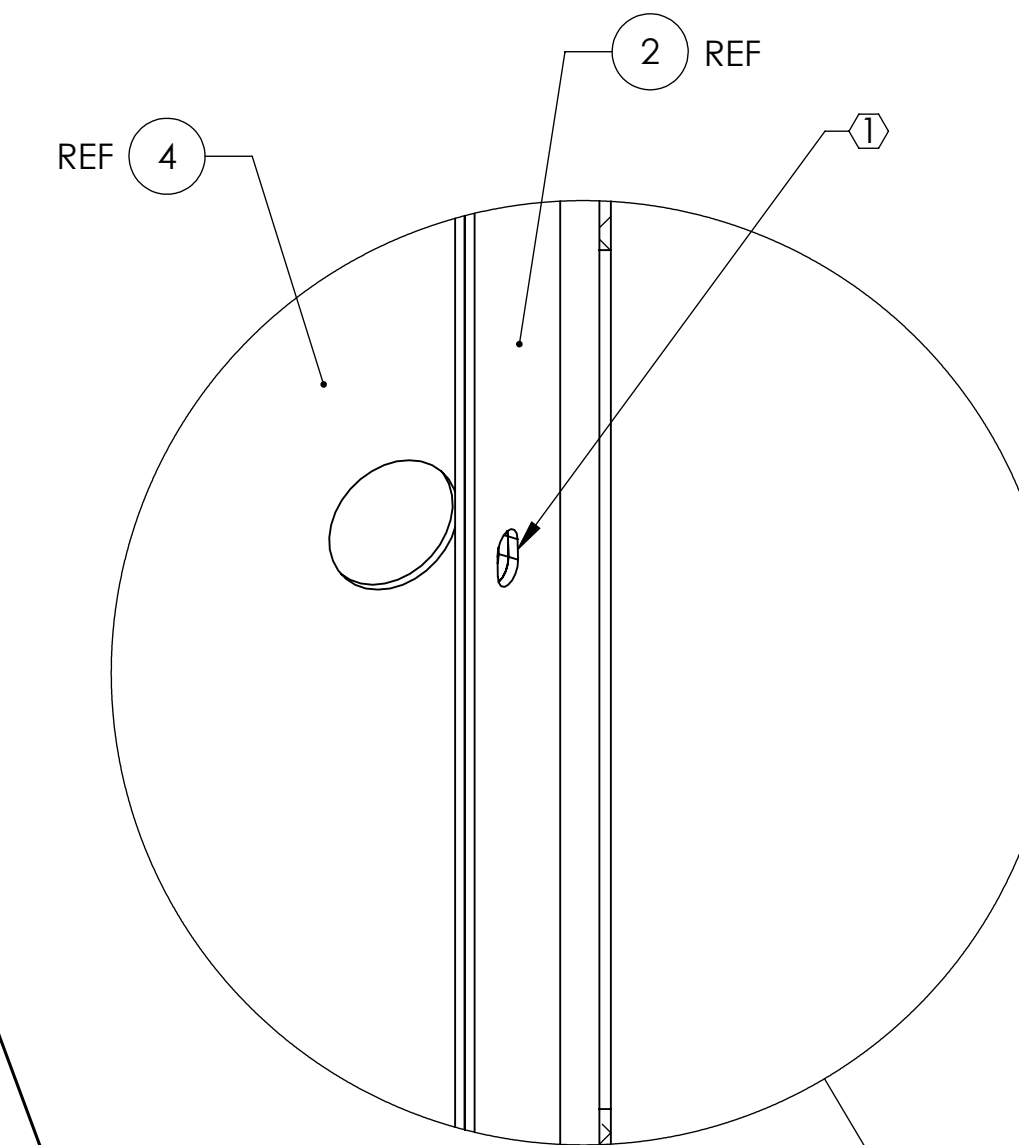
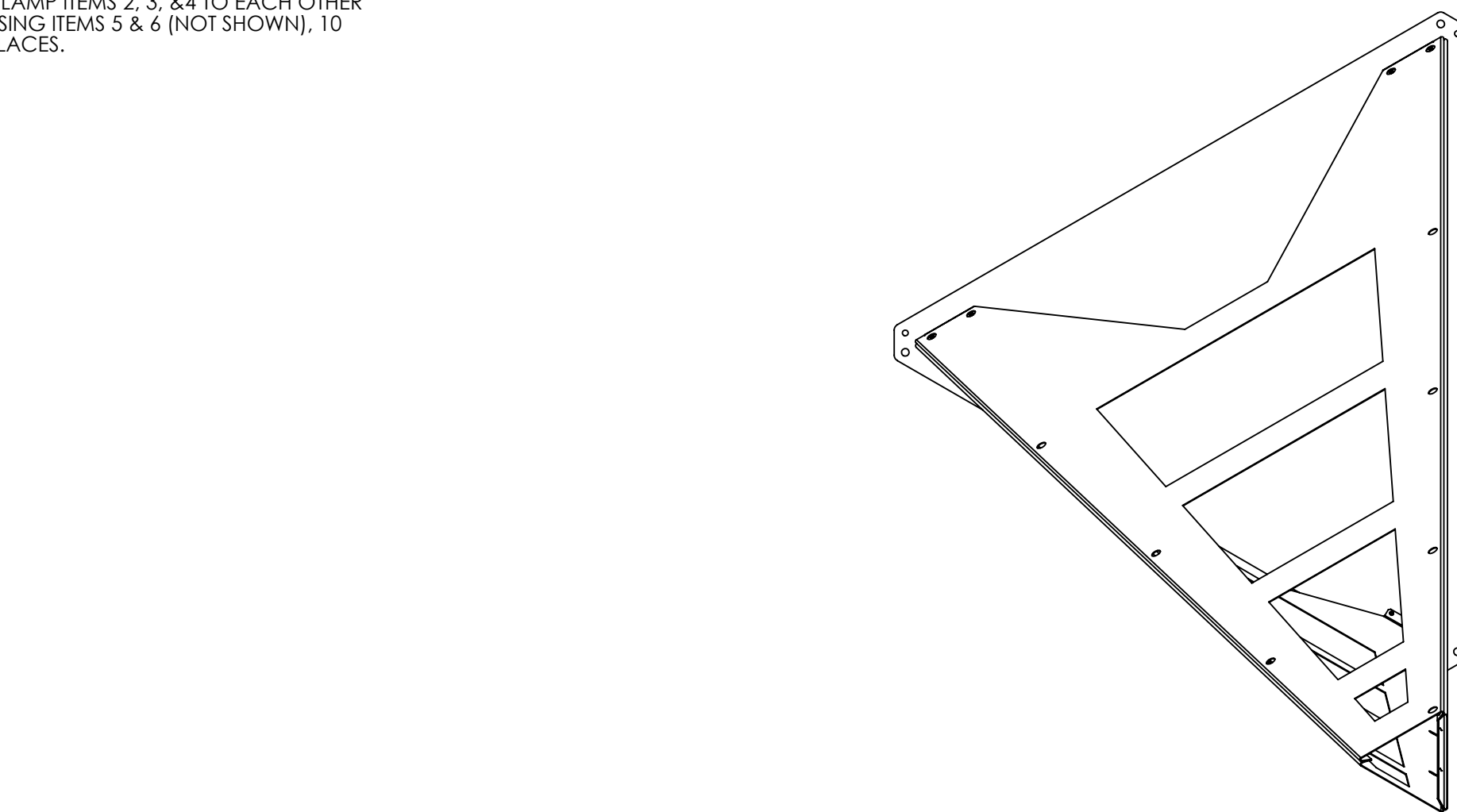
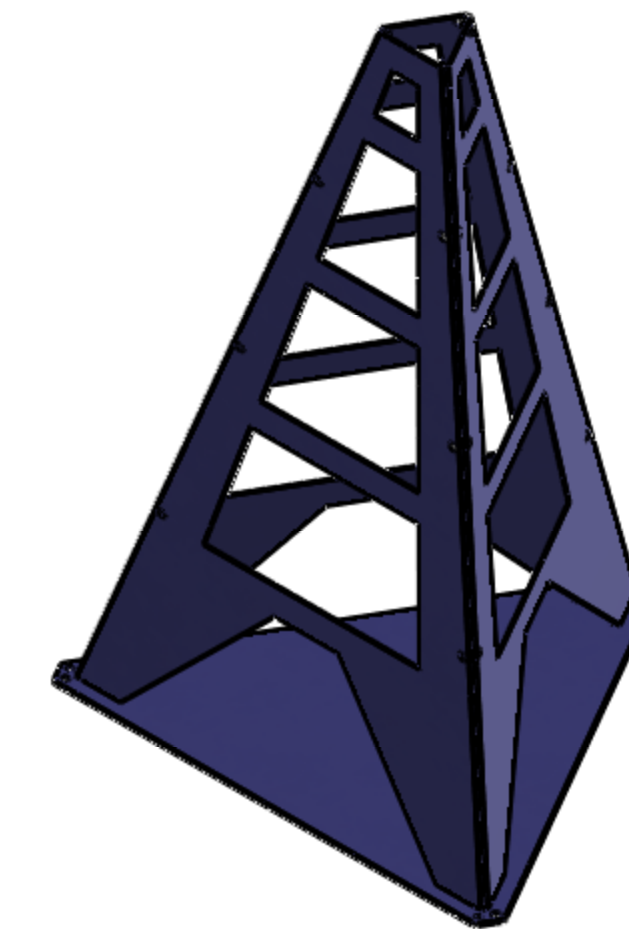


NOTES CONTINUED:
 ① CLAMP ITEMS 2, 3, & 4 TO EACH OTHER USING ITEMS 5 & 6 (NOT SHOWN), 10 PLACES.

REV.	DATE	DCN #	DRAWING TREE #
v1	19 NOV 2009	E0900399-v1	-
-	-	-	-
-	-	-	-



ITEM NO.	PART NUMBER	DESCRIPTION	MATERIAL	REQ	SPARE	TOTAL
6	-	HEX NUT, #10-24	STEEL	10	2	12
5	-	SCREW, SOCKET HEAD CAP, #10-24 UNC-2A X 0.3125 LONG	STEEL	22	2	24
4	D0902329	ALIGO AOS OPLEV & PHOTCAL RX PIER SIDE PANEL3 LH MOCK-UP	6061 Alloy	1		1
3	D0902328	ALIGO AOS OPLEV & PHOTCAL RX PIER SIDE PANEL2 LH MOCK-UP	6061 Alloy	1		1
2	D0902327	ALIGO AOS OPLEV & PHOTCAL RX PIER SIDE PANEL1 LH MOCK-UP	6061 Alloy	1		1
1	D0902324	ALIGO AOS PIER BASE MOCK-UP, 42 in	6061 Alloy	1		1

NOTES AND TOLERANCES: (UNLESS OTHERWISE SPECIFIED)	
DIMENSIONS ARE IN	
TOLERANCES:	
.XX ±	
.XXX ±	
ANGULAR ± °	
MATERIAL	N/A
FINISH	N/A μinch

LIGO CALIFORNIA INSTITUTE OF TECHNOLOGY
 MASSACHUSETTS INSTITUTE OF TECHNOLOGY

SYSTEM: ADVANCED LIGO SUB-SYSTEM: AOS

NEXT ASSY: N/A

PART NAME: **aLIGO AOS OpLev & PhotCal RX Pier LH Mock-Up**

DESIGNER: C. CONLEY 06 NOV 2009 SIZE DWG. NO. 19 NOV 2009

DRAFTER: C. CONLEY 19 NOV 2009

CHECKER: **D**

APPROVAL: **D0902611**

SCALE: NONE PROJECTION:

SHEET 1 OF 1

D0902611 aLIGO AOS OpLev & PhotCal RX Pier LH Mock-Up, PART PDM REV: X-019, DRAWING PDM REV: X-016