

4

3

2

1

NOTES CONTINUED:

⑤ SCRIBE, ENGRAVE, OR MECHANICALLY STAMP (NO INKS OR DYES) DRAWING PART NUMBER AND REVISION ON NOTED SURFACE FOLLOWED ON THE NEXT LINE BY A THREE DIGIT SERIAL NUMBER. SERIAL NUMBERS START AT 001 FOR THE FIRST ARTICLE AND PROCEED CONSECUTIVELY. USE .07" HIGH CHARACTERS. EXAMPLE: DXXXXXX-VY, S/N 001. A VIBRATORY TOOL MAY BE USED.

REV.	DATE	DCN #	DRAWING TREE #
v1	22 OCT 2009	E0900369	-
-	-	-	-
-	-	-	-

D

D

C

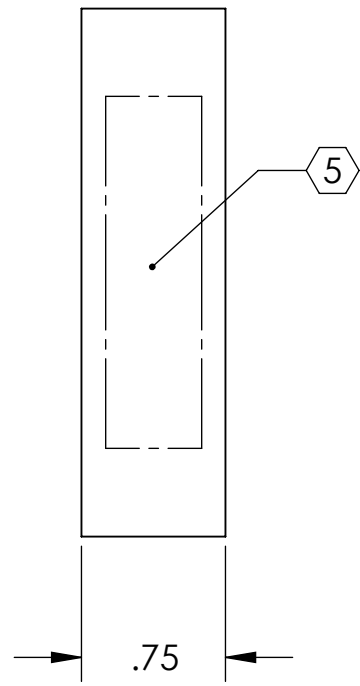
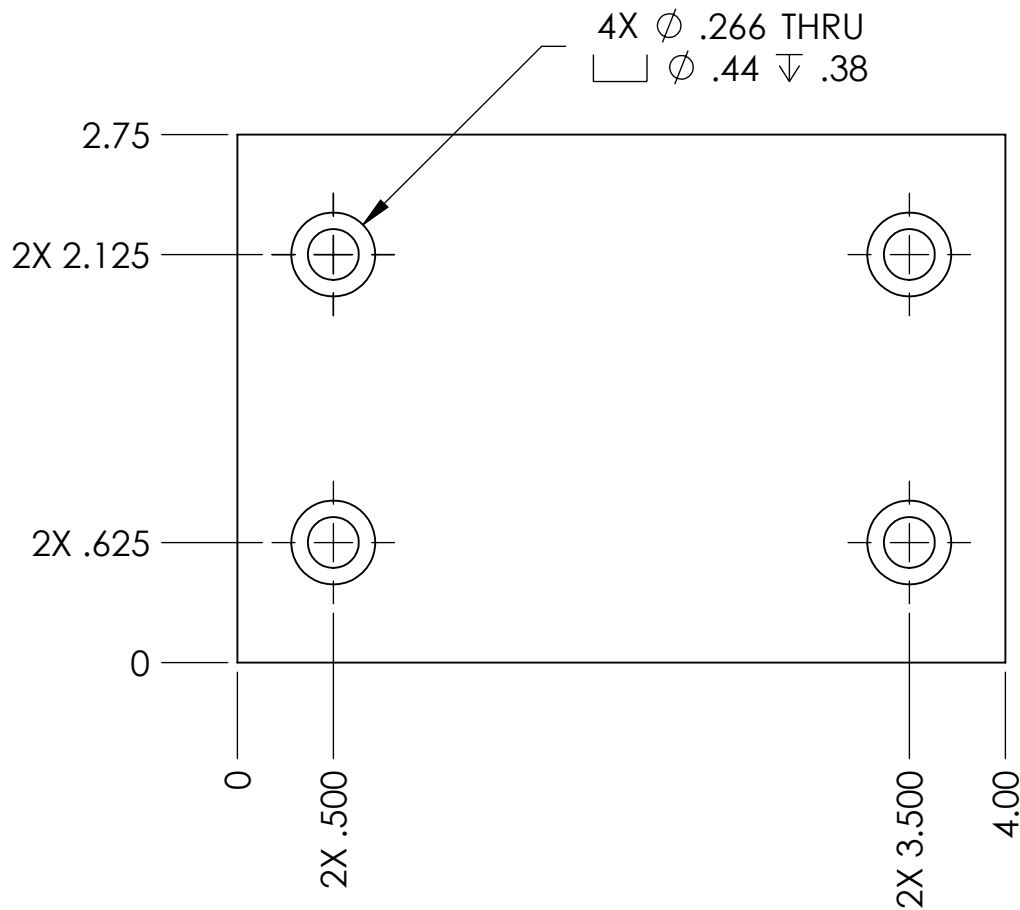
C

B

B

A

A



NOTES AND TOLERANCES: (UNLESS OTHERWISE SPECIFIED)

DIMENSIONS ARE IN INCHES

TOLERANCES:
 .XX ± .01
 .XXX ± .005

ANGULAR ± 0.5°

1. INTERPRET DRAWING PER ASME Y14.5-1994.
2. REMOVE ALL SHARP EDGES, R.02 MIN.
3. DO NOT SCALE FROM DRAWING.
4. ALL MACHINING FLUIDS MUST BE FULLY SYNTHETIC, FULLY WATER SOLUBLE AND FREE OF SULFUR, SILICONE, AND CHLORINE.

MATERIAL
PFA440 HP (PRESHRUNK)

FINISH
 N/A μinch



SYSTEM
ADVANCED LIGO

SUB-SYSTEM
SUS

NEXT ASSY
OPTIC HOLDER, HAM SUS.

PART NAME

OPTIC REST PLATE

DESIGNER	D. BRIDGES	11 NOV 2009	SIZE	DWG. NO.	REV.
DRAFTER	D. BRIDGES	11 NOV 2009	A	D0902585	v1
CHECKER	J. ROMIE	12 NOV 2009	SCALE: 1:1	PROJECTION:	SHEET 1 OF 1
APPROVAL					

4

3

2

1