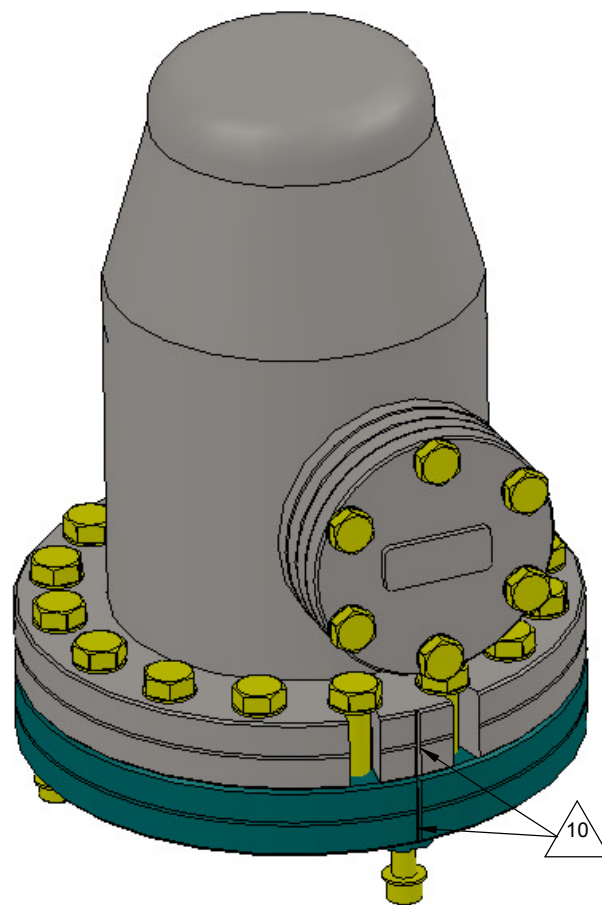
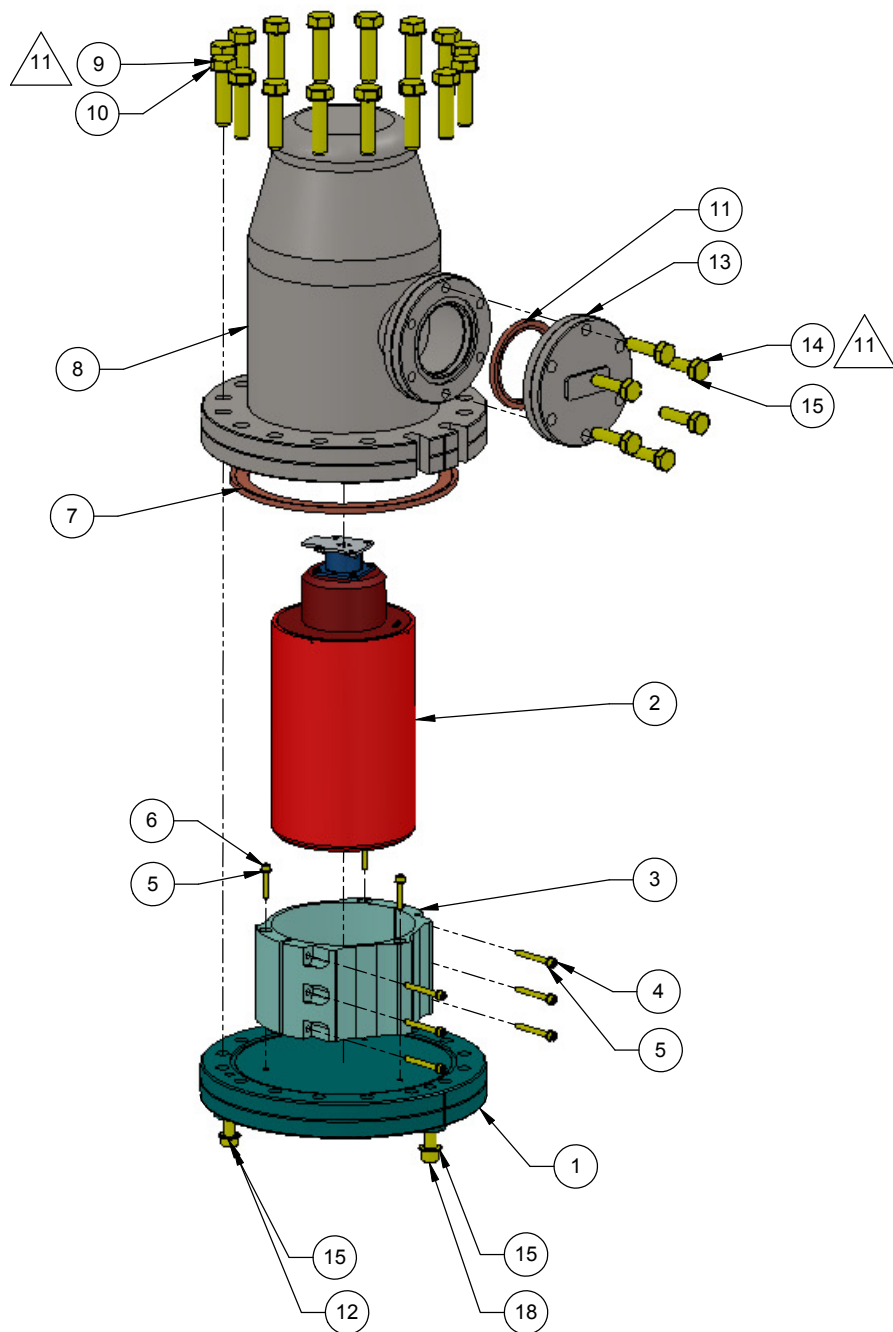


- NOTES:
- VENDOR REFERENCES ARE PROVIDED AS EXAMPLE OF PARTS MEETING ALL SPECIFICATIONS. EQUIVALENTS ARE ALWAYS ACCEPTABLE UNLESS OTHERWISE SPECIFIED.
 - ELECTRONIC, SENSORS AND CABLES IN MODELS AND BOM ARE FOR LAYOUT AND ASSEMBLY PURPOSES ONLY. NOT TO BE USED FOR PURCHASING OR INVENTORY. SEE SEI ELECTRONICS GROUP FOR DETAILS RELATED TO THOSE COMPONENTS.
 - ALL PARTS SHALL BE MANUFACTURED IN ACCORDANCE WITH LIGO SPECIFICATION (LIGO E048225).
 - ALL WELDMENTS SHALL BE MADE IN ACCORDANCE WITH LIGO SPECIFICATION (LIGO E0900048).
 - MUST BE ASSEMBLED AND TORQUED ACCORDING TO LIGO ASSEMBLY PROCEDURE T080261.
 - ALIGN MARKS.
 - DISCARD FLAT WASHERS SUPPLIED WITH KIT

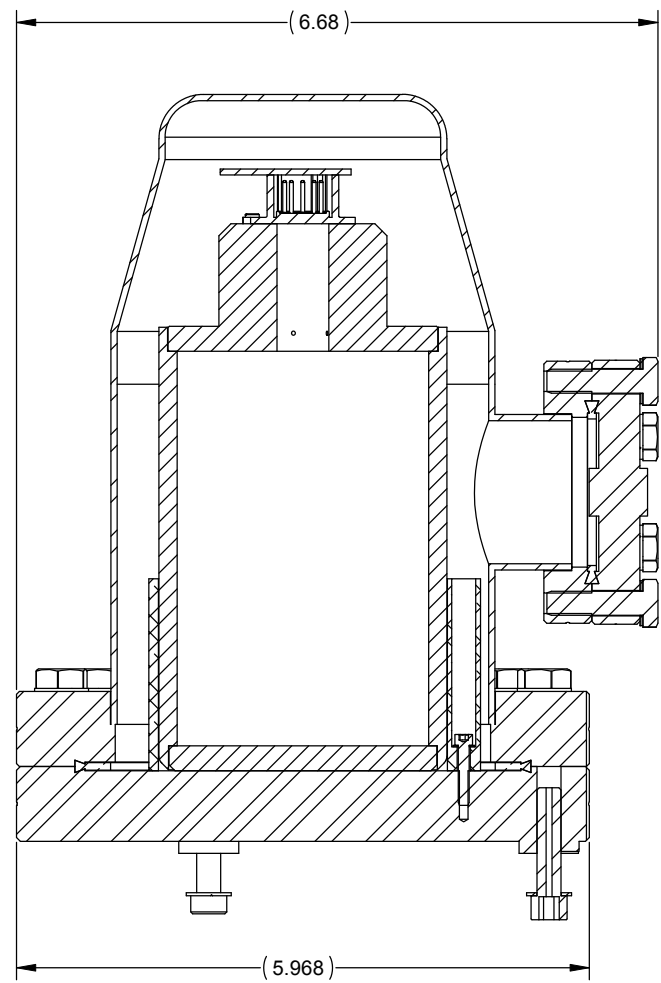
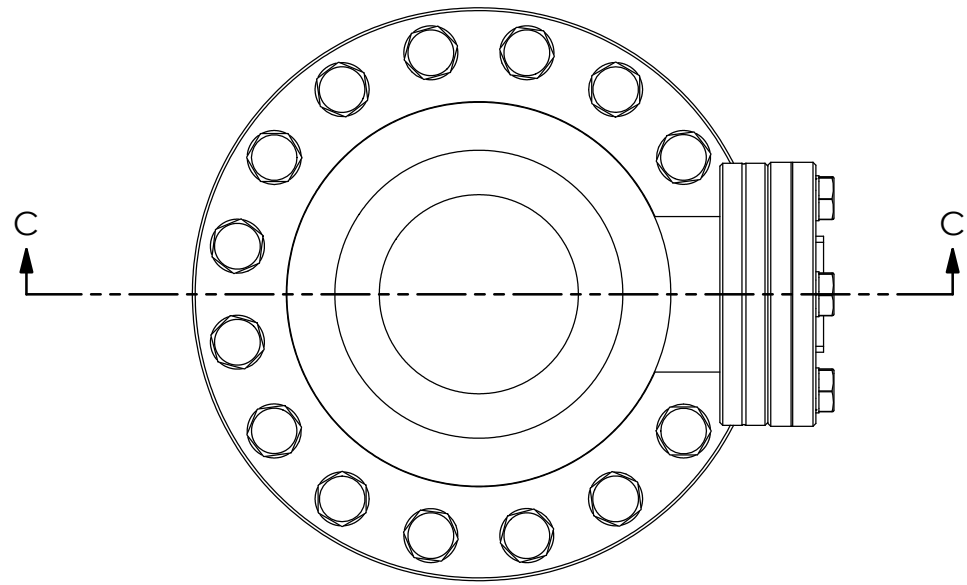
REV.	DATE	DCN #	DRAWING TREE #
V1	24 Feb. 2004	-	-
V2	26 Jan. 2010	E0900436	T0900600
V3	20 FEB 2010	E1000048	T0900600



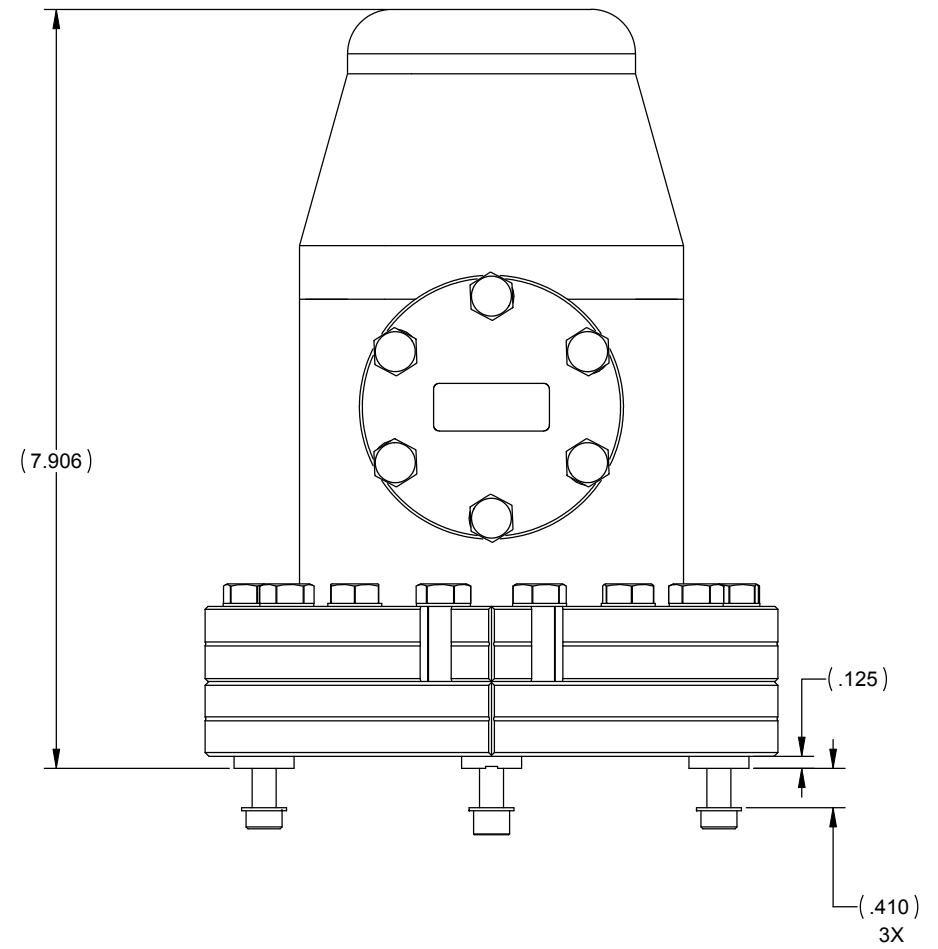
ITEM NO.	PART NUMBER	DESCRIPTION	MATERIAL	LIGO Pod Assy/Qty.
18	UCC_C-2015-A	SHCS, Ag-Plated, Vented, 1/4"-20x1.125"	18-8 SSSL	1
17	N/A (pre order)	D-Sub 9 Pin Connector	N/A	1
16	D047815	Cable, L4C Seismometer internal to pod	N/A	1
15	UCC WFV-25	Flat Washer, Vented .255 ID, .46 OD, .032 THK	18-8 SSSL	9
14	Nor-Cal, B-275T-12-SP	Screw Hex Head 1/4-28 UNF-2A x 1L, Silver plated (or equivalent 12 pt screw)	18-8 SSSL	6
13	Accuglass 100200	Feedthrough Accuglass 275 CF	AISI 304	1
12	D0902801	Shoulder Screw, .250od x .75 lg x 10-32 UNC, Silver Plated, Vented	18-8 SSSL	2
11	Nor-Cal G-275	Seal for CF 275 150N	Copper	1
10	UCC WFV-31	Flat Washer .31 id x .58 od x .06 thk	18-8 SSSL	16
9	Nor-Cal, B-600T-12-SP	Screw Hex Head, 5/16-24 UNF-2A x 1.25 L, Silver Plated (or equivalent 12 pt screw)	18-8 SSSL	16
8	D047823	L4-C Pod Top Hat	AISI 304	1
7	Nor-Cal G-600	Seal for CF 600 400N	Copper	1
6	UCC C-286-410-NA	SHCS 4-40 UNC-2B x 5/8 L, Silver Plated	18-8 SSSL	3
5	UCC WF-04	Flat Washer, #4, .115 id x .209 od x .016 thk	18-8 SSSL	9
4	MCMaster_92196A115	SHCS, #4, 0.112-40, UNC x 1L	18-8 SSSL	6
3	D047824	Clamp for L4C in Pod	Aluminum	1
2	N/A	L4C Seismometer	N/A	1
1	D047822	Base Plate Flange, L4C Pod	AISI 304	1

DIMENSIONS ARE IN INCHES		TOLERANCES: .XX ± n/a .XXX ± n/a		ANGULAR ± n/a		NOTES AND TOLERANCES: (UNLESS OTHERWISE SPECIFIED) 1. INTERPRET DRAWING PER ASME Y14.5-1994. 2. REMOVE ALL SHARP EDGES, R.02 MIN. 3. DO NOT SCALE FROM DRAWING. 4. ALL MACHINING FLUIDS MUST BE FULLY SYNTHETIC, FULLY WATER SOLUBLE AND FREE OF SULFUR, SILICONE, AND CHLORINE.		MATERIAL N/A		FINISH N/A μinch		LIGO CALIFORNIA INSTITUTE OF TECHNOLOGY MASSACHUSETTS INSTITUTE OF TECHNOLOGY		PART NAME L4C Seimometer Pod Assembly		DESIGNER ASI 02 Dec 2004		SIZE D		DWG. NO. D047820		REV. V3	
ADVANCED LIGO												SEI		NEXT ASSY D0901182 and D0900124		APPROVAL K.MASON 20 FEB 2010		SCALE: 1:1		PROJECTION:		SHEET 1 OF 2	

D047820 L4C Seismometer Pod Assembly, PART PDM REV: V2, DRAWING PDM REV: V2.001



SECTION C-C
SCALE 1 : 1



D047820 LAC Seismometer Pod Assembly, PART FDM REV. V2, DRAWING FDM REV. V2.001