

Status of the LIGO Detectors

Daniel Sigg (for the LIGO Scientific Collaboration)

LIGO Hanford Observatory, PO Box 159, Richland, WA 99352, USA

E-mail: sigg_d@ligo.caltech.edu

Abstract. All three LIGO gravitational wave detectors have reached their design sensitivities. A sky-averaged detection range ($\text{SNR} > 8$) of more than 15 Mpc for gravitational waves emitted from inspiral binary neutron stars with masses of $1.4 M_{\odot}$ has been achieved with the two 4 km instruments. The fifth LIGO science started in November 2005 and ended in September 2007. A full year of triple coincidence data has been acquired. The duty cycle of a single instrument was between 66% and 79%. Results from previous science runs are presented.

1. Introduction

The LIGO gravitational wave detectors are Michelson interferometers which deploy arm cavities and power-recycling[1,2]. The light bounces an average of about 100 times in the arm cavities enhancing the gravitational-wave signal by effectively increasing the arm length of the Michelson[3]. Under normal running the anti-symmetric port of the beamsplitter is operated on a dark fringe. This will return most of the light back towards the laser. A partially transmitting mirror is installed in this path to form the power-recycling cavity[4]. If its transmission is matched to the light losses in the main interferometer, all the light is lost inside the interferometer and no power is returned to the laser. The power-recycling increases the light power on the beamsplitter by about a factor of 40 to 70. The laser light is generated by a solid state Nd:YAG laser operating at 1064 nm and delivering 10 W of output power in the fundamental mode[5]. Before the light is launched into the instrument it is stabilized in frequency and amplitude and passed through a triangular ring cavity which serves as a spatial mode cleaner. To isolate the optics (test masses) from disturbances introduced by motion of the ground due to seismic and man-made activities and to allow for free movement of the test masses in the gravitational wave frequency band, LIGO implements seismic isolation systems[6] from which the mirrors are suspended by wires[7]. They form a coupled pendulum system with low eigenmode frequencies and high isolation at the frequencies above ~ 1 Hz. Numerous servo loops are required to hold the cavities on resonance[8], to operate on a dark fringe, to stabilize the laser frequency and to automatically align the mirrors relative to the beam direction[9]. Most of these compensation networks are implemented using digital controls[10]. A data acquisition system is used to record the gravitational-wave signal as well as a number of auxiliary channels to monitor the physical environment and the performance of the instrument.

2. Context and Overview

The LIGO project consists of three instruments located at two sites. At the LIGO Livingston Observatory a single 4 km instrument (L1) is operated, whereas at the LIGO Hanford Observatory both a 4 km instrument (H1) and a 2 km instrument (H2) are operated.

Fig. 1 shows the time line of the LIGO project. It shows important milestones such as the inauguration, the first lock, the first time all interferometers were fully locked and the date the design sensitivity was reached. It shows a history of the LIGO science runs and it indicates the improvements in sensitivity achieved over the same time. The fifth science run has just been finished and the current main effort is an enhancement project which will lead to a final science run with initial LIGO. Advanced LIGO is scheduled to start installation and commissioning in 2011.

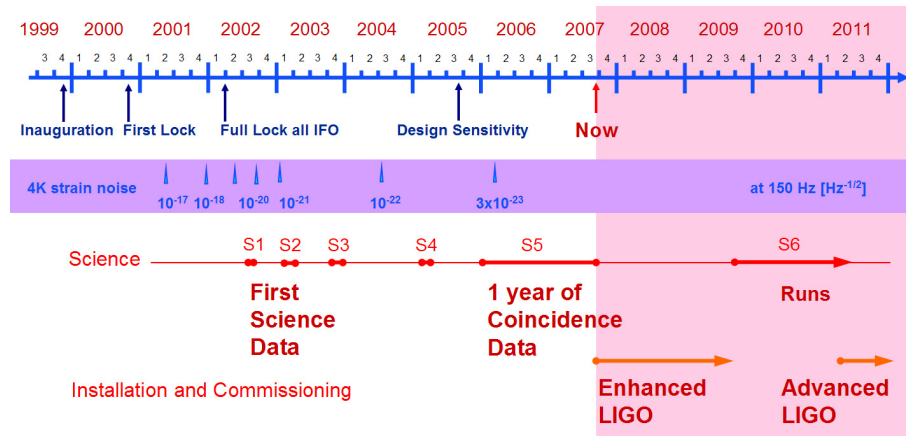


Figure 1. Time line of the LIGO project. Design sensitivity has been reached by the third quarter of 2005. The fifth science run has been finished on September 30th, 2007 and work on Enhanced LIGO has started. Another long science run is planned before the start of installation and commissioning of Advanced LIGO in 2011.

3. Current Sensitivity and Noise Budget

The current displacement sensitivity of the three LIGO instruments are shown in Fig. 2. The design sensitivity has been reached for all three detectors. The strain sensitivity can be deduced by dividing by 4000 m and by 2000 m for the 4 km and 2 km instruments, respectively.

The noise budget of the 4 km instrument at Hanford is shown in Fig. 3. The measured noise curve is denoted by DARM whereas the design sensitivity is denoted by SRD. The total contribution from all known noise sources is denoted by the dashed green line. At frequencies above about 200 Hz the instrument is limited by shot noise (Shot). Other noise sources such as dark noise (Dark) from the photodetectors and readout electronics, laser intensity noise (Intensity) and laser frequency noise (Frequency) are all well below shot noise. At low frequencies numerous noise sources are contributing to the measured noise spectrum: (i) the cross-couplings from auxiliary servo loops such as the Michelson length (MICH) and the power recycling cavity length (PRC), (ii) the local oscillator (Oscillator), (iii) the angular control loops with the optical levers (OpticalLev), the wavefront sensors (WFS) and the local sensing (OSEM), (iv) the remaining seismic excitation (Seismic), (v) the actuator noise from the end test masses (ETM), the input test masses (ITM) and the beamsplitter (BS), (vi) the laser fluctuations of the thermal compensation system (TCS), and (vii) the thermal noise from the suspension wires (SusTherm) and the test masses (IntTherm). There is a small region between 50 Hz and 100 Hz where the noise is not completely accounted for. Possible candidates are noise from the actuator magnets (Barkhausen effect), seismic up-conversion due to a non-linear actuator response and scattered stray beams which form parasitic interferometer paths. The noise between 20 Hz and 50 Hz is mainly due to man-made activities and is highly non-stationary. It varies minute by minute and is hard to estimate at any given point in time.

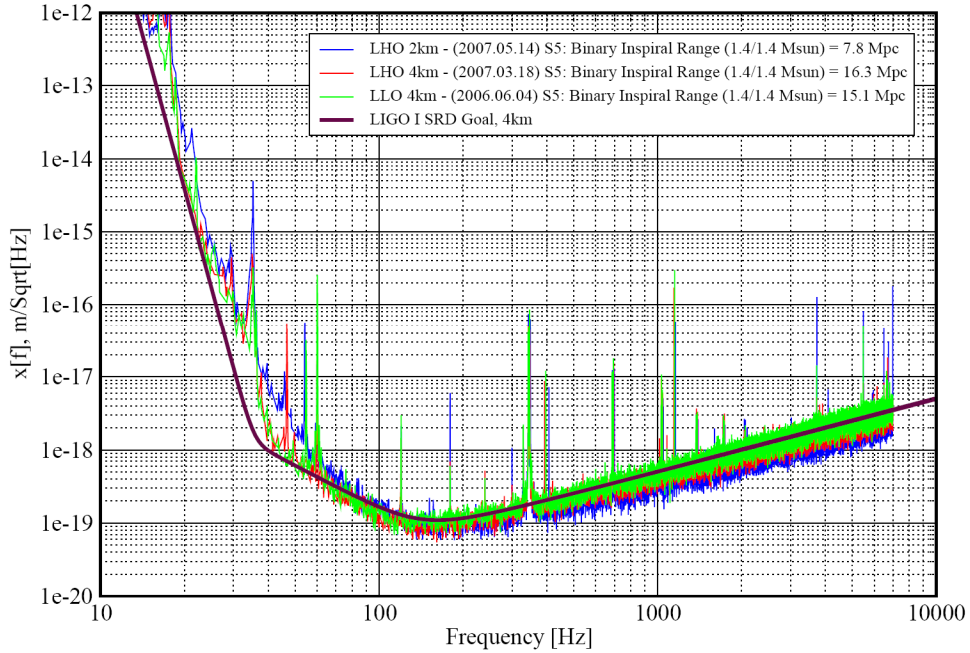


Figure 2. Current displacement sensitivity of the 2 km interferometer at Hanford (blue), the 4 km interferometer at Hanford (red) and the 4 km interferometer at Livingston (green). The dark smooth curve depicts the design sensitivity. All three instruments have clearly reached this goal for all frequencies above about 40 Hz. The legend also lists the astrophysical sky-averaged range to a 1.4/1.4 solar mass neutron star inspiral event assuming a signal-to-noise ratio of 8. Both 4 km instruments are at 15 Mpc or just above. The 2 km instrument is about half as sensitive (due to being half as long).

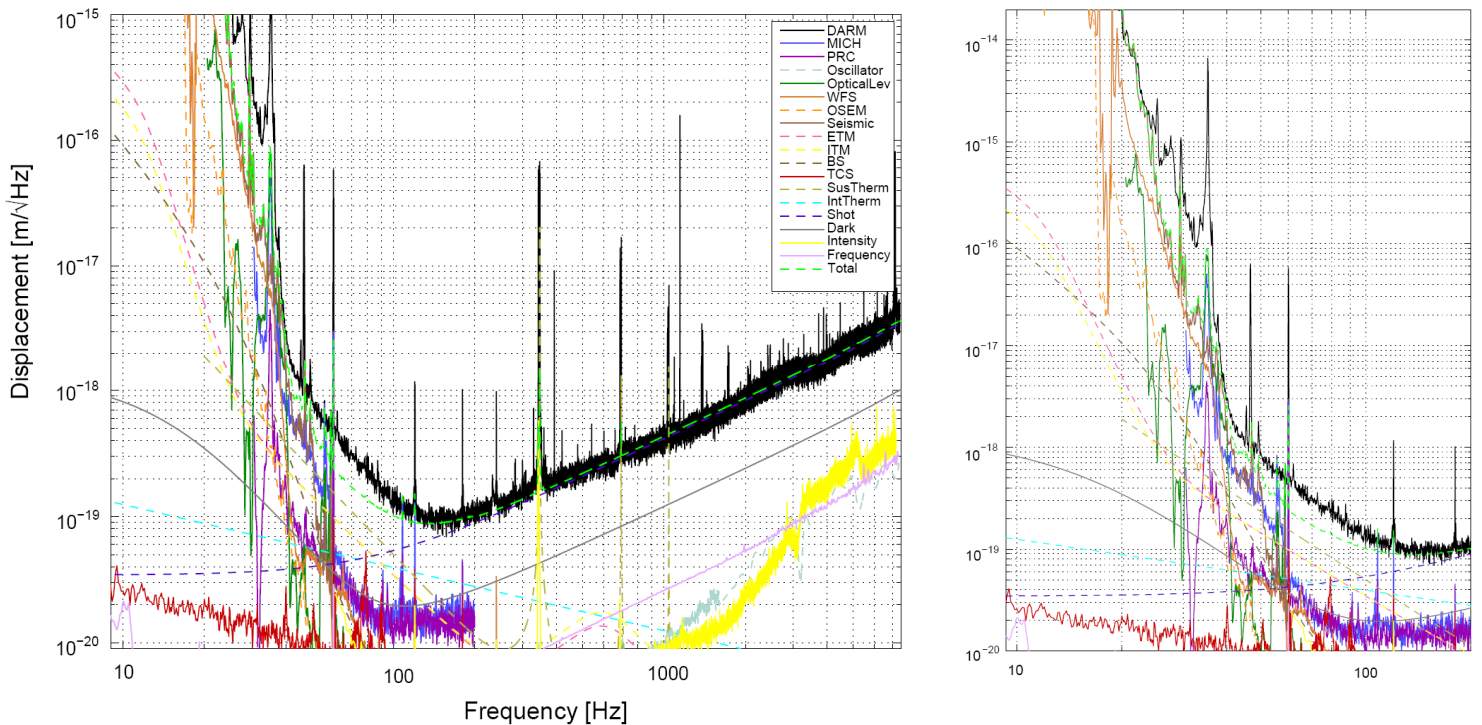


Figure 3. The noise budget for the 4 km instrument at Hanford. Zoomed version to the right. See text for explanation.

4. The Fifth LIGO Science Run

The 5th LIGO science run started on November 4, 2005 and ended on September 30, 2007. Just over 365 days of triple coincidence data have been acquired. A little more than 400 days of two site coincident data have been archived. The duty factor for the 4 km interferometer at Hanford was around 78%, it was about 79% for the 2 km interferometer at Hanford and it was about 66% for the Livingston interferometer. The triple coincidence duty factor was 53%, whereas the two site coincidence duty factor was 60%. Figure 4 shows a weekly trend of the duty factor during the 5th science run.

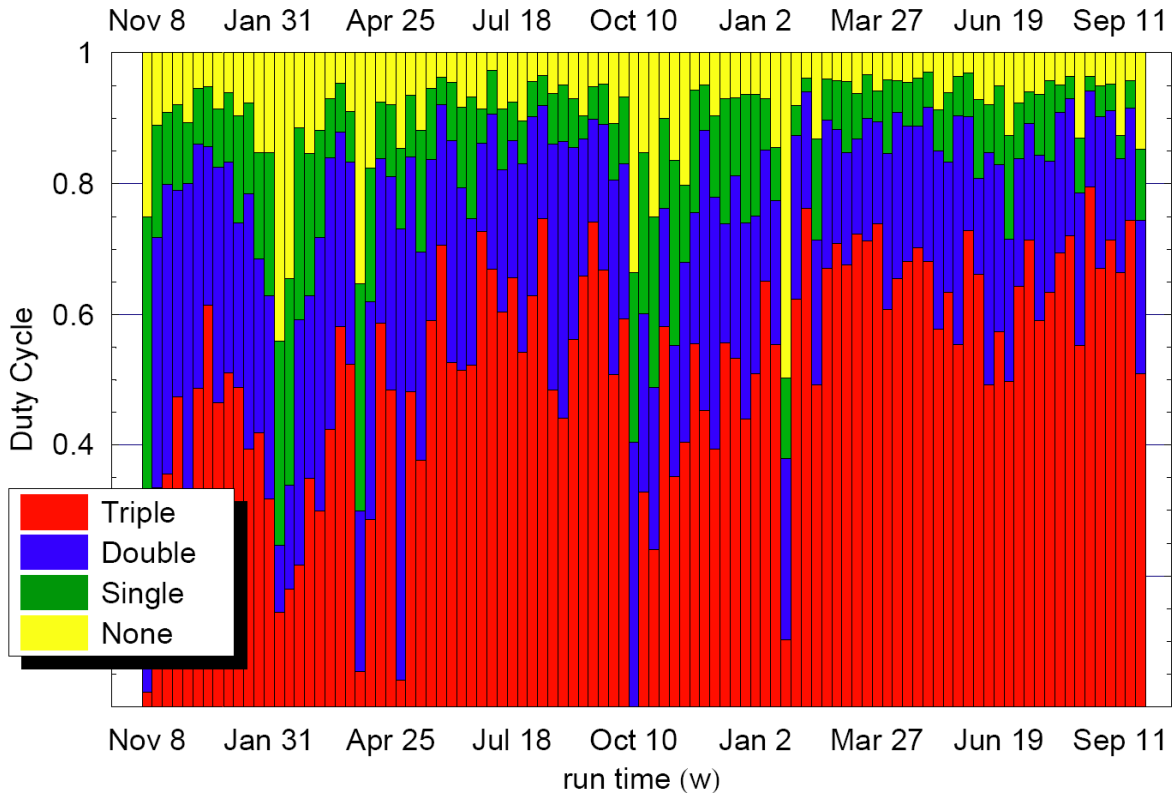


Figure 4. Weekly duty factor of the LIGO instruments during the 5th science run. The red bars indicate the triple coincidence time, the top of the blue and green bars indicate the times where at least two or at least one instrument were operating, respectively. The yellow bars indicate the time no instrument was up. Some of the weeks with very low duty factor were due to in-run commissioning activities.

Figure 5 shows a histogram of the scientific reach to detect binary neutron star coalescence events. The range is computed every minute for two 1.4 solar mass neutron star spiraling into each other. The range is sky averaged for a signal-to-noise ratio of 8. Different range peaks for the same interferometer are typically due to changes in the instrument as part of the in-run commissioning improvements.

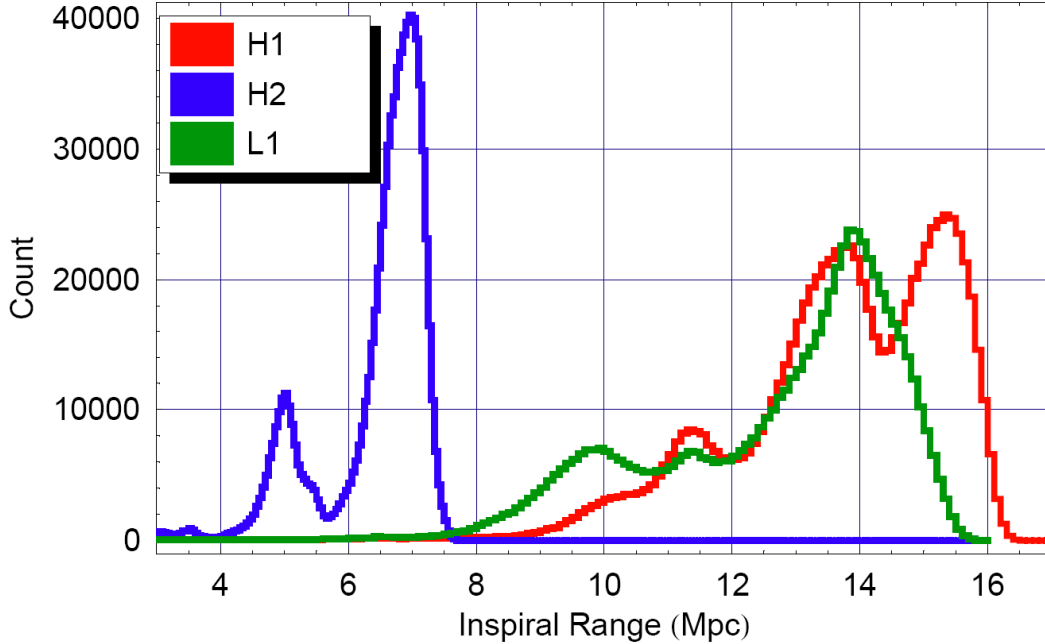


Figure 5. Histogram of the astrophysical reach. The curves show the sky-averaged range to a 1.4/1.4 solar mass binary neutron star inspiral with a signal-to-noise of 8. Different peaks for the same interferometer are typically due to changes in the instrument as part of the in-run commissioning improvements.

5. Enhanced LIGO Plans

Enhanced LIGO[11] is a project to upgrade the two 4 km interferometers with an in-vacuum output mode cleaner, in-vacuum photodetectors at the anti-symmetric port, a DC readout scheme, a new advanced LIGO seismic isolation system for the detection bench, a 30W laser from Laser Zentrum Hannover, a more powerful thermal compensation system and input optics which can handle higher power. These improvements are envisioned to yield an improvement of the inspiral range by a factor of two. Figure 6 shows the proposed noise spectrum. The combination of increased power and DC readout scheme yields up to a factor of four improvements in shot noise sensitivity. The DC readout scheme has the additional advantage of being insensitive to local oscillator noise, but requires a quiet laser.

6. Results

The data from the 5th LIGO science run are still being analyzed. However, results from previous science runs have been analyzed and published[12-37]. So far no detection has been made and all results are quoted as upper limits. The most recent results are for the 4th LIGO science run with some results including the 3rd LIGO science run as well. For binary inspiral events at the 90% confidence level the rate limits are 1.2/y/L10 for neutron star binaries in the mass range of 1 to 3 solar masses, 0.5/y/L10 for black hole binaries in the mass range of 3 to 80 solar masses and 4.9/y/L10 for primordial black hole binaries in the range from 0.35 to 1 solar masses. The unit L10 stands for a mass equivalent of 10^{10} solar blue luminosity. The Milky Way has an estimated 1.6 L10.

Strain limits on the gravitational radiation from 78 known pulsars have been established as low as 3.2×10^{-25} and as low as 1×10^{-6} on the eccentricity (95% confidence level). The energy limit on a stochastic gravitational background as fraction of the closure density is $\Omega_{\text{GW}} \leq 6.5 \times 10^{-5}$ at a 90% confidence level. This limit is for a frequency independent gravitational wave spectrum between 51 Hz and 150 Hz. The sensitivity to burst events is in the range of $h_{\text{rss}} \sim 10^{-21}/\sqrt{\text{Hz}}$ to $10^{-20}/\sqrt{\text{Hz}}$, where h_{rss} denotes the root-square-sum strain amplitude of the event. The rate limit at the 90% confidence

level is at 0.15/day which corresponds to about 8×10^{-8} solar mass of released energy in gravitational waves at a distance of 10 kpc with a waveform that is centered at 150Hz and has a quality factor of 9. For the SGR1806-20 hyperflare on December 27th, 2004, the limit in strain is $h_{\text{rss}} \leq 4.5 \times 10^{-22}/\sqrt{\text{Hz}}$. No more than 4.3×10^{-8} solar mass of gravitational energy was released by this event.

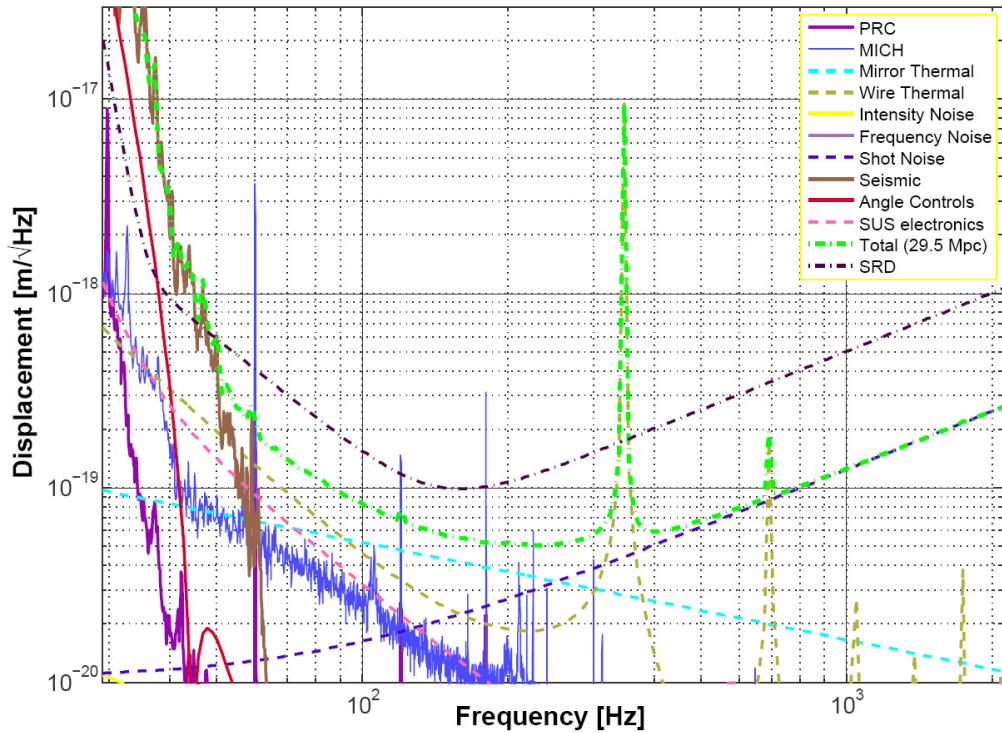


Figure 6. Projected noise budget for Enhanced LIGO. The green curve is the planned sensitivity improvement. The legend is similar to Figure 3.

7. Conclusions

All LIGO interferometers have reached design sensitivity. For sources like binary neutron star and black hole coalescence we can see well into the Virgo cluster. The 5th LIGO science run has been completed with 1 year of triple coincidence data. Preparations for Enhanced LIGO are well underway. Another long science run is planned with a factor of two better sensitivity—before Advanced LIGO installation and commissioning starts in 2011.

Acknowledgement

The authors gratefully acknowledge the support of the United States National Science Foundation for the construction and operation of the LIGO Laboratory and the Science and Technology Facilities Council of the United Kingdom, the Max-Planck-Society, and the State of Niedersachsen/Germany for support of the construction and operation of the GEO600 detector. The authors also gratefully acknowledge the support of the research by these agencies and by the Australian Research Council, the Council of Scientific and Industrial Research of India, the Istituto Nazionale di Fisica Nucleare of Italy, the Spanish Ministerio de Educacion y Ciencia, the Conselleria d'Economia Hisenda i Innovacio of the Govern de les Illes Balears, the Scottish Funding Council, the Scottish Universities Physics Alliance, The National Aeronautics and Space Administration, the Carnegie Trust, the Leverhulme Trust, the David and Lucile Packard Foundation, the Research Corporation, and the Alfred P. Sloan Foundation.

References

- [1] A. Abramovici, W.E. Althouse, R.W.P. Drever, Y. Gursel, S. Kawamura, F.J. Raab, D. Shoemaker, L. Sievers, R.E. Spero, K.S. Thorne, R.E. Vogt, R. Weiss, S.E. Whitcomb, and M.E. Zucker, “*LIGO - the laser interferometer gravitational-wave observatory*,” *Science* **256**, 325–333 (1992).
- [2] B. Barish and R. Weiss, “*LIGO and the Detection of Gravitational Waves*,” *Phys. Today* **52**, 44 (1999).
- [3] R.W.P. Drever, in *Gravitational Radiation*, N. Duruelli and T. Piran, eds. (North Holland, Amsterdam, 1983), p. 321.
- [4] R.W.P. Drever, J. Hough, A.J. Munley, S.-A. Lee, R. Spero, S.E. Whitcomb, H. Ward, G.M. Ford, M. Hereld, N.A. Robertson, I. Kerr, J.R. Pugh, G.P. Newton, B. Meers, E.D. Brook III, and Y. Gürsel, “*Gravitational wave detectors using laser interferometers and optical cavities*,” in *Quantum Optics, Experimental Gravity and Measurement Theory*, P. Meystre and M.O. Scully, eds. (Plenum, New York, 1983), pp.503-524.
- [5] R.L. Savage, P.J. King, and S.U. Seel, “*A highly stabilized 10-watt Nd:YAG laser for the Laser Interferometer Gravitational-wave Observatory (LIGO)*,” *Laser Phys.* **8**, 679–685 (1998).
- [6] J. Giaime, P. Saha, D. Shoemaker, and L. Sievers, “*A passive vibration isolation stack for LIGO: design, modeling, and testing*,” *Rev. Sci. Instrum.* **67**, 208–214 (1996).
- [7] A. Gillespie and F. Raab, “*Thermal noise in the test mass suspensions of a laser interferometer gravitational-wave detector prototype*,” *Phy. Lett.* **A178**, 357–363 (1993).
- [8] P. Fritschel, R. Bork, G. González, N. Mavalvala, D. Ouimette, H. Rong, D. Sigg, and M. Zucker, “*Readout and control of a power-recycled interferometric gravitational wave antenna*,” *Appl. Opt.* **40**, 4988–4998 (2001).
- [9] P. Fritschel, G. González, N. Mavalvala, D. Shoemaker, D. Sigg, and M. Zucker, “*Alignment of a long-baseline gravitational wave interferometer*,” *Appl. Opt.* **37**, 6734–6747 (1998).
- [10] R. Bork, R. Abbott, D. Barker, and J. Heefner, “*An Overview of the LIGO Control and Data Acquisition System*,” proceedings ICALEPCS 2001, ed., Hamid Shoae, San Jose (2001), 19–23.
- [11] R. Adhikari, P. Fritschel and S. Waldman, “*Enhanced LIGO*”, LIGO-T060156-01.
- [12] B. Abbott et al., “*Detector description and performance for the first coincidence observations between LIGO and GEO*,” *Nucl. Instrum. Meth.* **A517** (2004) 154–179.
- [13] B. Abbott et al., “*First upper limits from LIGO on gravitational waves bursts*,” *Phys. Rev. D* **69** (2004) 102001.
- [14] B. Abbott et al., “*Setting upper limits on the strength of periodic gravitational waves from PSR J1939 + 2134 using the first science data from the GEO600 and LIGO detectors*,” *Phys. Rev. D* **69** (2004) 082004.
- [15] B. Abbott et al., “*Analysis of LIGO data for gravitational waves from binary neutron stars*,” *Phys. Rev. D* **69** (2004) 122001.
- [16] B. Abbott et al., “*Analysis of LIGO data for stochastic gravitational waves*,” *Phys. Rev. D* **69** (2004) 122004.
- [17] B. Abbott et al., “*Limits on gravitational wave emission from selected pulsars using LIGO data*,” *Phys. Rev. Lett.* **94** (2005) 181103.
- [18] B. Abbott et al., “*A search for gravitational waves associated with the gamma ray burst GRB030329 using the LIGO detectors*,” *Phys. Rev. D* **72** (2005) 042002.
- [19] B. Abbott et al., “*First all-sky upper limits from LIGO on the strength of periodic gravitational waves using the Hough transform*,” *Phys. Rev. D* **72** (2005) 102004.
- [20] B. Abbott et al., “*Search for gravitational waves from galactic and extra-galactic binary neutron stars*,” *Phys. Rev. D.* **72** (2005) 082001.
- [21] B. Abbott et al., “*Search for gravitational waves from primordial black hole binary coalescences in the galactic halo*,” *Phys. Rev. D.* **72** (2005) 082002.
- [22] B. Abbott et al., “*Upper limits from LIGO and TAMA detectors on the rate of gravitational wave bursts*,” *Phys. Rev. D.* **72** (2005) 122004.

- [23] B. Abbott et al., “Upper limits on a stochastic background of gravitational waves,” *Phys. Rev. Lett.* 95 (2005) 221101.
- [24] B. Abbott et al., “Upper limits on gravitational wave bursts in LIGO’s second science run,” *Phys. Rev. D* 72 (2005) 062001.
- [25] B. Abbott et al., “Search for gravitational wave bursts in LIGO’s third science run,” *Class. Quantum Grav.* 23 (2006) S29–S39.
- [26] B. Abbott et al., “Search for gravitational waves from binary black hole inspirals in LIGO data,” *Phys. Rev. D* 73 (2006) 062001.
- [27] B. Abbott et al., “Joint LIGO and TAMA300 Search for Gravitational Waves from Inspiralling Neutron Star Binaries,” *Phys. Rev. D* 73 (2006) 102002.
- [28] B. Abbott et al., “First cross-correlation analysis of interferometric and resonant-bar gravitational wave data for stochastic backgrounds,” *Phys. Rev. D* 76 (2007) 022001.
- [29] L. Baggio et al., “A Joint Search for Gravitational Wave Bursts with AURIGA and LIGO,” to be submitted to CQG, arXiv:0710.0497 [gr-qc].
- [30] B. Abbott et al., “Searches for periodic gravitational waves from unknown isolated sources and *Scorpius X-1*: Results from the second LIGO science run,” *Phys. Rev. D* 76 (2007) 082001.
- [31] B. Abbott et al., “Search for gravitational wave radiation associated with the pulsating tail of the SGR 1806-20 hyperflare of December 27, 2004 using LIGO,” *Phys. Rev. D* 76 (2007) 062003.
- [32] B. Abbott et al., “Search for gravitational-wave bursts in LIGO data from the fourth science run,” *Class. Quantum Grav.* 24 (2007) 5343–5369.
- [33] B. Abbott et al., “Search for Gravitational Waves Associated with 39 Gamma-Ray Bursts Using data from the Second, Third, and Fourth LIGO Runs,” submitted to *Phys. Rev. D.*, arXiv:0709.0766 [gr-qc].
- [34] B. Abbott et al., “Search for gravitational waves from binary inspirals in S3 and S4 LIGO data,” submitted to *Phys. Rev. D*, arXiv:0704.3368 [gr-qc].
- [35] B. Abbott et al., “Upper Limits on Gravitational Wave Emission from 78 Radio Pulsars,” *Phys. Rev. D* 76 (2007) 042001.
- [36] B. Abbott et al., “Upper limit map of a background of gravitational waves,” submitted to *Phys. Rev. D*, arXiv:astro-ph/0703234.
- [37] B. Abbott et al., “Searching for Stochastic Background of Gravitational Waves with LIGO,” *ApJ.* 659 (2007) 918.