

**ETM TELESCOPE PRIMARY PARABOLIC MIRROR ADLIGO**

APPROVALS	DATE	REV	DCN NO.	BY	CHECK	DCC	DATE
AUTHOR: MICHAEL SMITH	8/11/10	V5	E1000315	MRS			
CHECKED:							
APPROVED:							
DCC RELEASE							

1 SCOPE

This is a specification for the ADLIGO ETM TELESCOPE PRIMARY PARABOLIC MIRROR. This concave parabolic mirror is part of an off-axis reflecting beam-reducing telescope.

2 APPLICABLE DOCUMENTS

MIL-C-695C

3 REQUIREMENTS**3.1 PERFORMANCE CHARACTERISTICS****3.1.1 Mirror Fabrication****3.1.1.1 Front Surface, S1**

Effective focal length	2000 +/- 20 mm
Conic constant	-1.000 +/- 0.002
Tilt tolerance, reference to back surface (S2)	+/- 0.0083 deg
Clear aperture diameter	190 mm
Center displacement from optical axis	562.2 +/- 1 mm
Diameter	230.0 +0.0, -0.1 mm
Minimum edge thickness	43 mm
Surface irregularity	< 1/8 wave, peak to valley @ 633 nm over clear aperture
Surface finish	60/40
Surface roughness	< 100 Angstrom
Chamfer edges	0.5-1.0 mm, 45 +/- 10 deg

3.1.1.2 Back Surface, S2

Surface quality	fine ground, > 300 grit
Chamfer edges	0.5-1.0 mm, 45 +/- 10 deg

3.1.1.3 Mirror Coating

Front surface S1 only	
Wavelength	1064 nm
Polarization	S
Incidence angle	8 deg
Protected silver, reflectivity	>98%
Durability	per MIL-C-695C

**ETM TELESCOPE PRIMARY PARABOLIC MIRROR ADLIGO****3.2 DESIGN AND CONSTRUCTION****3.2.1 Materials**

Substrate material Zerodur or equivalent

3.2.1.1**3.3 QUALITY ASSURANCE/CONTROL****3.3.1 Identification**

Parts shall be serialized according to paragraph 3.3.1.2.

3.3.1.1 Optical Alignment Marks

Edge orientation mark shall be placed to indicate orientation of mirror with respect to the optical axis, as shown in figure 1: 0.24 +/- 0.05 mm wide x 20 +/- mm long

3.3.1.2 Serial Number

A serial number shall be etched, ground or sandblasted next to the alignment mark with the following format: D1000075-v? S/N nnn; where v? is the drawing revision number and nnn is the sequential serial number, 001 – 999 in the order produced.

3.3.2 Quality Assurance Provisions

A first article shall be produced and inspected.

3.3.3 Purchaser Access

The purchaser will have escorted access to quality control facility during all quality acceptance procedures.

3.3.4 QA Approval

LIGO Quality Assurance reserves the right to inspect and approve vendor/fabricator QA plans and processes.

4 TEST PROCEDURES

The telescope mirror performance shall be verified by the following test procedures

4.1 WAVEFRONT DISTORTION

Interferogram of reflected wavefront across the clear aperture @ 633 nm wavelength

5 DOCUMENTATION

- Compliance Certification for items: 3.1, 3.2, 3.3, 4.
- Interferogram, see 4.1 Wavefront Distortion.

6 ENVIRONMENTAL CHARACTERISTICS

The ETM Telescope will operate in a non-vibrational, ultra high vacuum environment , at 68 +/- 4 deg F.



ETM TELESCOPE PRIMARY PARABOLIC MIRROR ADLIGO

7 HANDLING AND SHIPPING PROCEDURES

7.1 Cleaning

Approved cleaning procedures for UHV components are detailed in LIGO-E960022, Vacuum Compatibility, Cleaning Methods and Compatibility Procedures.

All optical surfaces shall be cleaned in accordance with good commercial practice. Nothing shall contact the optical surfaces after cleaning, except for lint-free lens tissue.

7.2 Packaging for Shipment

The cleaned optical components shall be protected with lint-free lens tissue. In addition, all components shall be placed in individual, sealed, clean polyethylene bags before shipping.

The shipping containers must ensure that the bag does not become punctured and that the parts are properly protected during transit.

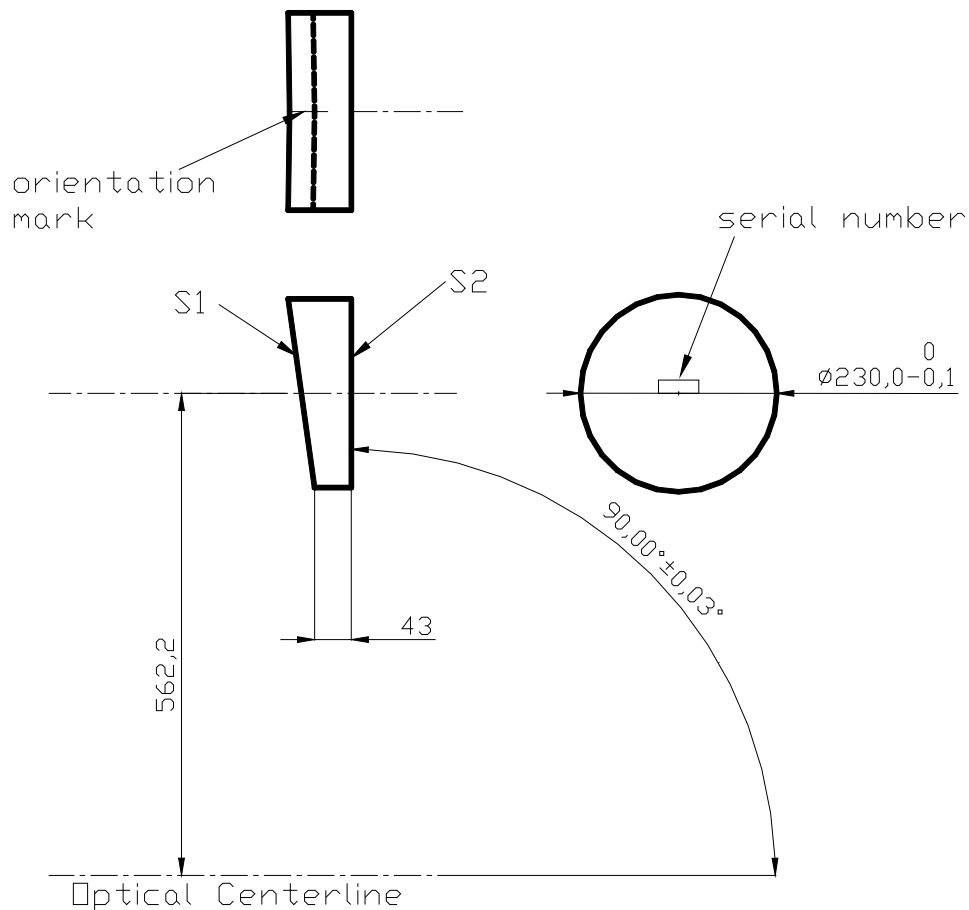


Figure 1: Mirror drawing, parabolic primary mirror