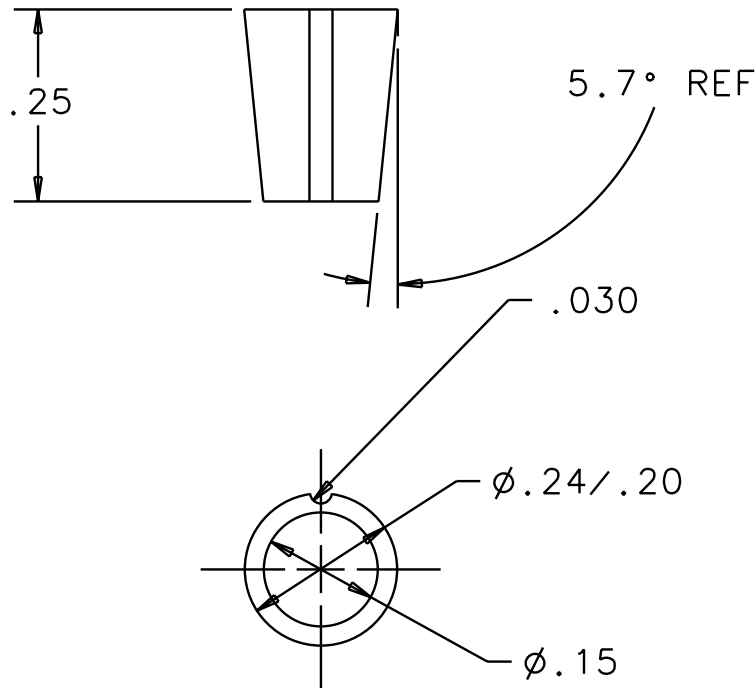


REV	DATE	DRAWN BY	CHECKED	DCC	DCN/DESCRIPTION
A	2-9-01	J.Romie			E010026/INITIAL RELEASE

NOTES: (UNLESS OTHERWISE SPECIFIED)

1. DIMENSIONS IN INCHES.
2. REMOVE PARTING LINE BURR.
3. MATERIAL: FLUOREL COMPOUND
 FC2180 100 PARTS
 CARBON BLACK (N990) 20 PARTS
 MgO (MAGLITE D) 3 PARTS
 CaOH 6 PARTS
 CALCIUM OXIDE 3 PARTS
4. SPECIFICATIONS FOR THE FABRICATION AND HANDLING OF THIS PART ARE COVERED IN LIGO-E970130.



QTY REQD	FSCM NO	PART OR IDENTIFYING NO	NOMENCLATURE OR DESCRIPTION		MATERIAL SPECIFICATION	ITEM NO
PARTS LIST						
UNLESS OTHERWISE SPECIFIED DIMENSIONS ARE IN IN (mm) TOLERANCES ARE: FRACTIONS DECIMALS 0.XX = ±0.01 0.XXX = ±0.005 ANGLES = ±0.5° DO NOT SCALE DRAWING		APPROVALS		DATE	LIGO CALIFORNIA INSTITUTE OF TECHNOLOGY MASSACHUSETTS INSTITUTE OF TECHNOLOGY	
MATERIAL SEE NOTES		DRAWN J. Hazel Romie		GROUP	TITLE	
FINISH		CHECKED		3/18/99	FLUOREL TIP, 1/4-20	
SCALE 4:1		FILENAME /home/dcc/docs/D990148.pdf		SIZE A	DWG NO. D990148	REV A
					SHEET	1 OF 1