

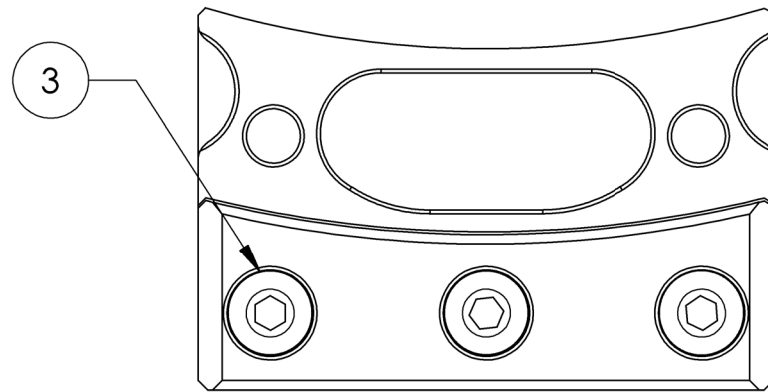
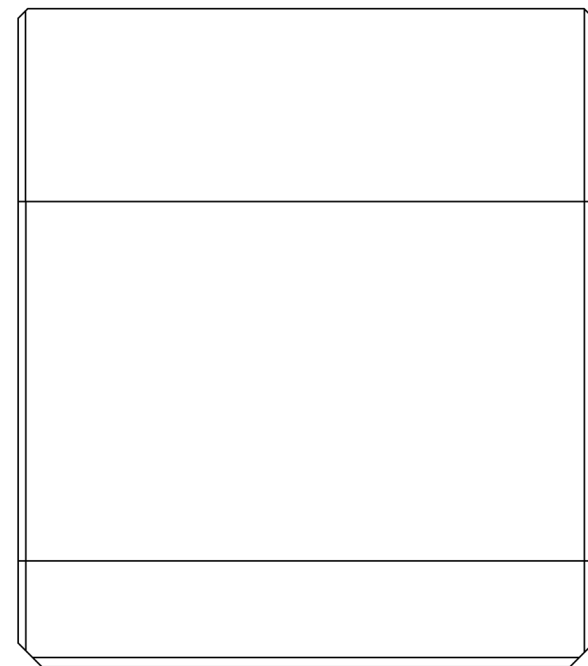
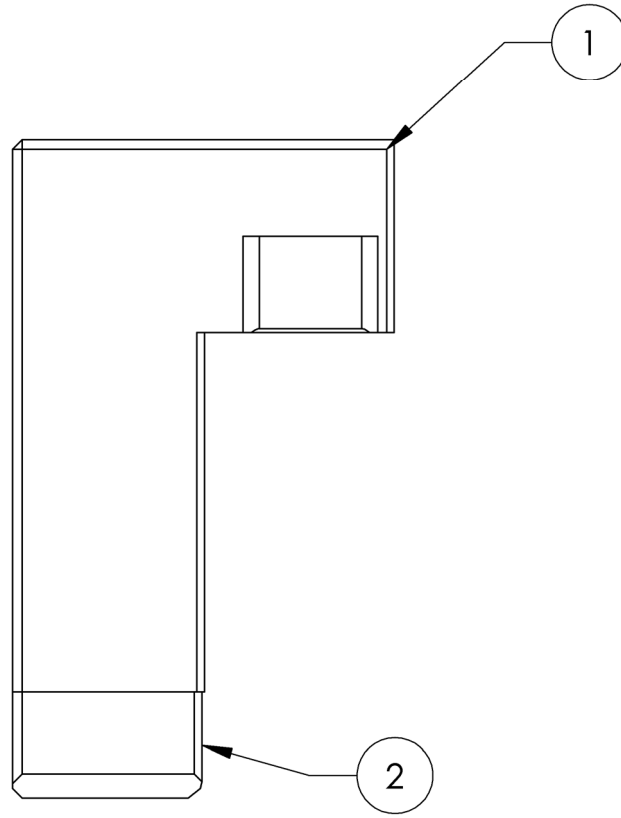
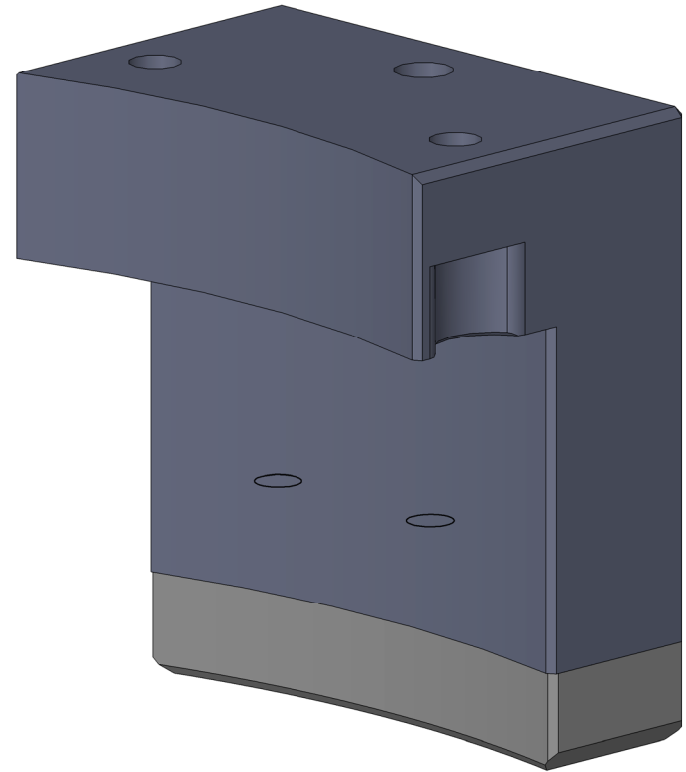
D0902547 Trillium Pod Loading Slider Foot Assem, PART PDM REV: X-009, DRAWING PDM REV: X-004

8 7 6 5 4 3 2 1

**NOTES CONTINUED:**  
 5. REFER TO LIGO DOC T0900593 FOR DETAILED INSTRUCTION OF THE POD ASSEMBLY PROCEDURE, INSTRUCTIONS AND PROCEDURES MUST BE CAREFULLY FOLLOWED.  
 6. REFER TO LIGO DOC E0900357 FOR THE INSTALLATION PROCEDURE OF THE POD ON THE BSC ISL.

REV.	DATE	DCN #	DRAWING TREE #
V1	26 Jan. 2010	E0900443-X0	E1000025
V2	22 Mar 2010	E0900443-V1	E1000025

D  
C  
B  
A



ITEM NO.	PART NUMBER	DESCRIPTION	MATERIAL	REQ
3	McMaster_90298A574	Shoulder Screw 5/16 dia x 1/4 lg. 1/4-20 thd	18-8 SSSL	3
2	D0902548	Trillium Pod, Loading, Slider Foot, Slider	PFA440	1
1	D0902546	Trillium Pod, Loading, Slider Foot	6061-T6 Al	1

DIMENSIONS ARE IN INCHES TOLERANCES: .XX ± N/A .XXX ± N/A ANGULAR ± N/A *		<b>NOTES AND TOLERANCES: (UNLESS OTHERWISE SPECIFIED)</b> 1. INTERPRET DRAWING PER ASME Y14.5-1994. 2. REMOVE ALL SHARP EDGES, R.02 MIN. 3. DO NOT SCALE FROM DRAWING. 4. ALL MACHINING FLUIDS MUST BE FULLY SYNTHETIC, FULLY WATER SOLUBLE AND FREE OF SULFUR, SILICONE, AND CHLORINE.		<b>LIGO</b> CALIFORNIA INSTITUTE OF TECHNOLOGY MASSACHUSETTS INSTITUTE OF TECHNOLOGY		PART NAME Trillium Pod, Loading, Slider Foot, Assem			
MATERIAL N/A		FINISH N/A μinch		NEXT ASSY D0900648		SYSTEM ADVANCED LIGO		SUB-SYSTEM SEI	
				DESIGNER S.BARNUM 1 Dec. 2009		SIZE B		DWG. NO. D0902547	
				DRAFTER M.HILLARD 26 Jan. 2010		SCALE: 1:1		REV. v2	
				CHECKER F.MATICHARD 26 Jan. 2010		PROJECTION:		SHEET 1 OF 1	
				APPROVAL K.MASON 26 Jan. 2010					

8 7 6 5 4 3 2 1