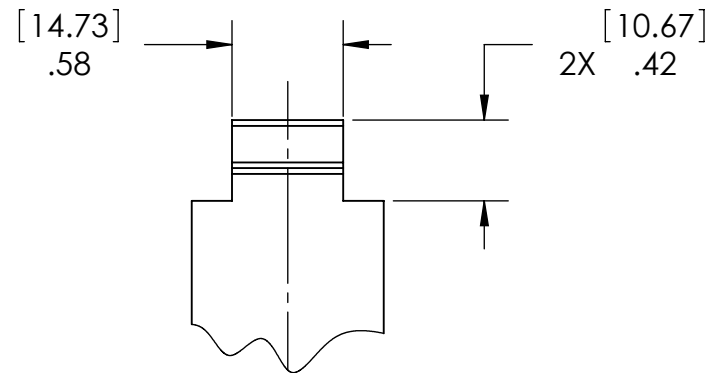
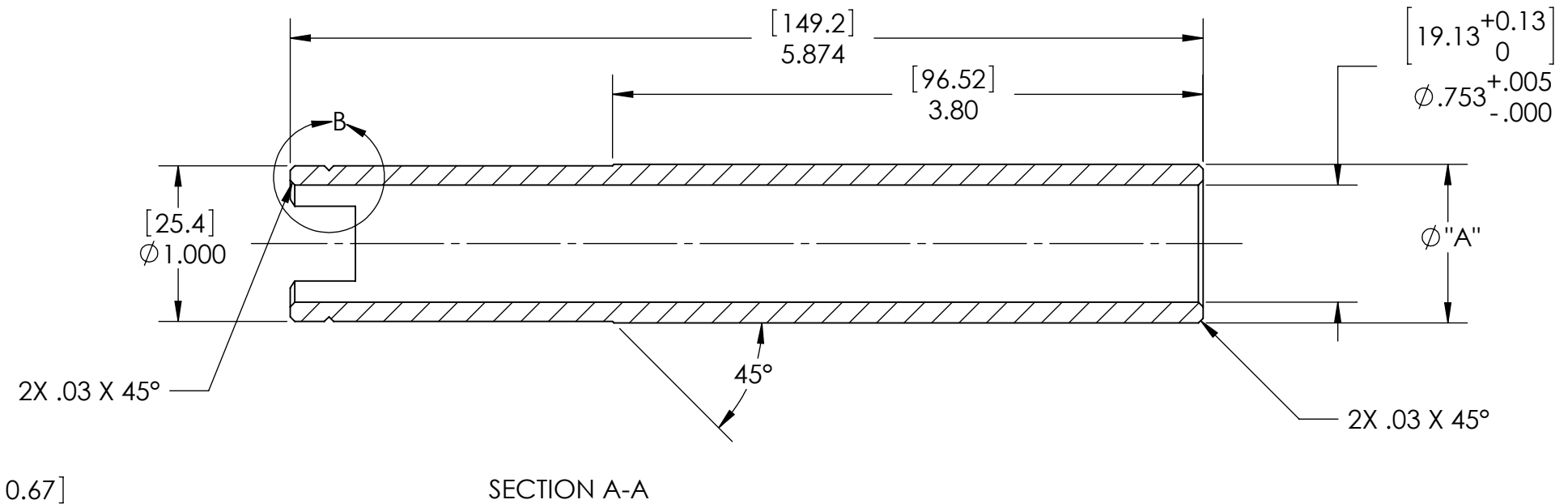
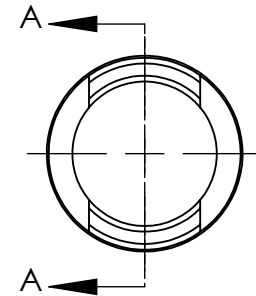
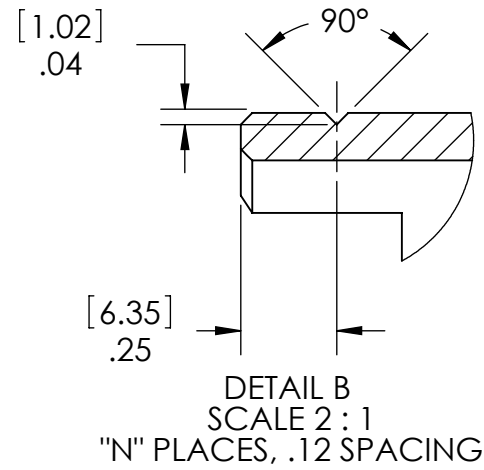


D0902522 OVERSIZE LOCATING SLEEVE, R OPTIC, COC CONTAINER, ADVANCED LIGO, PART PDM REV: X-001, DRAWING PDM REV: X-002

**NOTES CONTINUED:**  
 ⑤ SCRIBE, ENGRAVE, OR MECHANICALLY STAMP (NO DYES OR INKS) A UNIQUE THREE DIGIT SERIAL NUMBER & REVISION NUMBER ON EACH PART. SERIAL NUMBERS START AT 001 FOR THE FIRST ARTICLE AND PROCEED CONSECUTIVELY. BAG AND TAG PARTS WITH THEIR DRAWING PART NUMBER, REVISION, VARIANT OR "TYPE" (IF APPLICABLE), AND QUANTITY. IF PARTS ARE TOO SMALL TO SCRIBE, BAGGING AND TAGGING ALONE IS SUFFICIENT.  
 EXAMPLE (PART): 001-v1  
 EXAMPLE (TAG): DXXXXXXX-VY, TYPE-XX, QTY: TBD

REV.	DATE	DCN #	DRAWING TREE #
v1	29 OCT 2009	E0900383	
v2	29 APR 2010	E1000141	

PART NUMBER	Ø "A"	GROOVE PLACES "N"
D0902522-1	1.020	1
D0902522-2	1.040	2
D0902522-3	1.060	3
D0902522-4	1.080	4



**NOTES AND TOLERANCES: (UNLESS OTHERWISE SPECIFIED)**

DIMENSIONS ARE IN INCHES [MM]

TOLERANCES:  
 .XX ± .01  
 .XXX ± .005  
 ANGULAR ± 0.5°

1. INTERPRET DRAWING PER ASME Y14.5-1994.  
 2. REMOVE ALL SHARP EDGES, R.02 MIN.  
 3. DO NOT SCALE FROM DRAWING.  
 4. ALL MACHINING FLUIDS MUST BE FULLY SYNTHETIC, FULLY WATER SOLUBLE AND FREE OF SULFUR, SILICONE, AND CHLORINE.

MATERIAL	FINISH
PFA440 HP	N/A µinch

CALIFORNIA INSTITUTE OF TECHNOLOGY MASSACHUSETTS INSTITUTE OF TECHNOLOGY		PART NAME OVERSIZE LOCATING SLEEVE, R OPTIC, COC CONTAINER	
SYSTEM	SUB-SYSTEM	DESIGNER	DATE
ADVANCED LIGO	COC	K. BUCKLAND	29 OCT 2009
NEXT ASSY		DRAFTER	DATE
D0902138		K. BUCKLAND	29 OCT 2009
		CHECKER	DATE
		K. MAILAND	29 OCT 2009
		APPROVAL	DATE
		C. TORRIE	29 OCT 2009
SIZE	DWG. NO.	REV.	
B	D0902522	v2	
SCALE: 1:1	PROJECTION:	SHEET 1 OF 1	