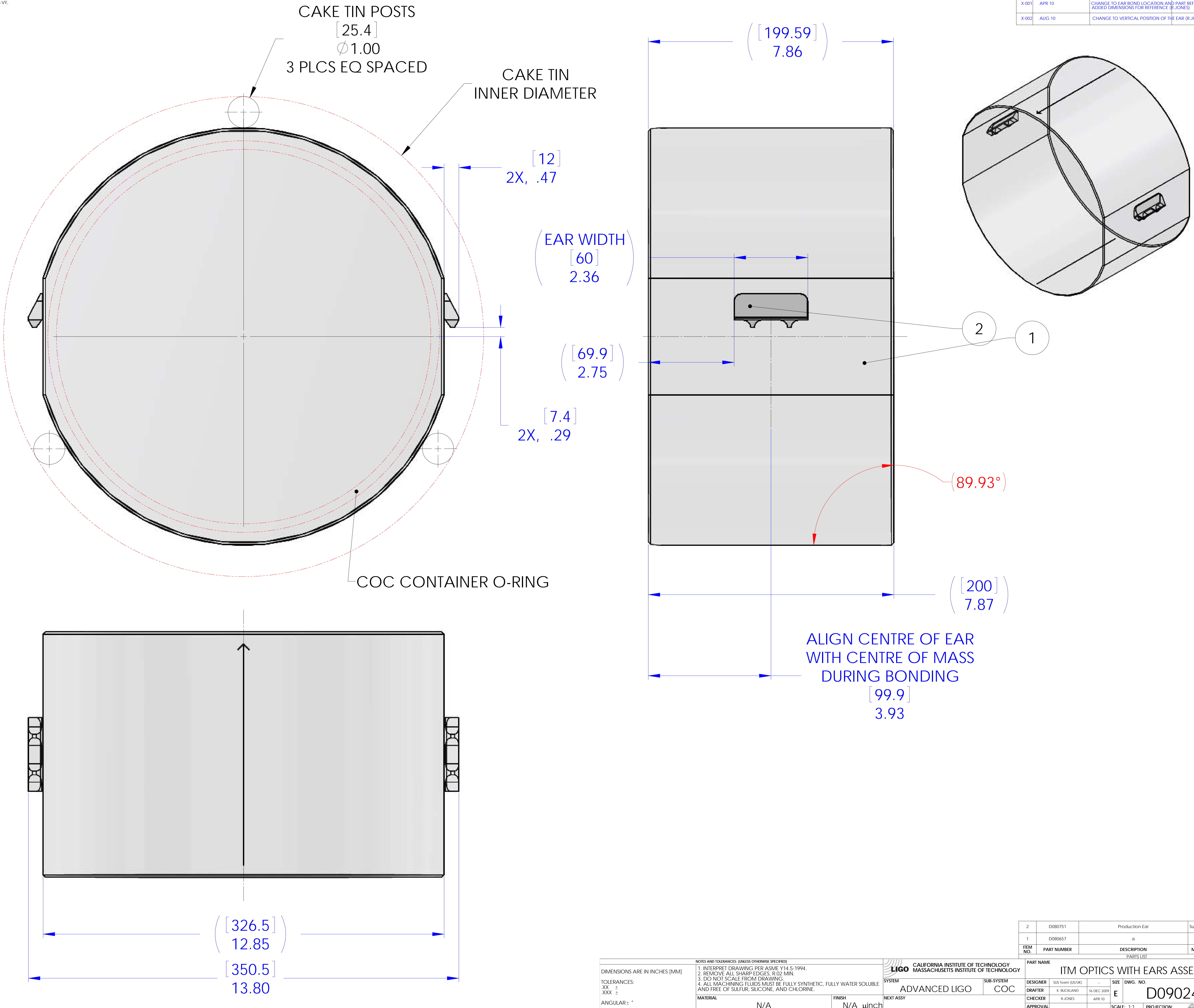


NOTES CONTINUED:  
 ③ BAG ALL ITEMS AND MARK OR TAG EACH BAG WITH DRAWING NUMBER, REVISION, AND QUANTITY. EXAMPLE: D000000-VY, QTY: 100

REV.	DATE	DCN #	DRAWING TREE #
X-000	DEC 09	(K.BUCKLAND)	
X-001	APR 10	CHANGE TO EAR BOND LOCATION AND PART REFERENCE (PER T1000114-V1). ADDED DIMENSIONS FOR REFERENCE (R.JONES)	
X-002	AUG 10	CHANGE TO VERTICAL POSITION OF THE EAR (R.JONES)	



NOTES AND TOLERANCES (UNLESS OTHERWISE SPECIFIED)		PART NAME	
DIMENSIONS ARE IN INCHES (MM) TOLERANCES: XX ± XXX ± ANGULAR ± °		ITM OPTICS WITH EARS ASSEMBLY	
1. INTERPRET DRAWING PER ASME Y14.5-1994. 2. REMOVE ALL SHARP EDGES, R.02 MIN. 3. DO NOT SCALE FROM DRAWING. 4. ALL MACHINING FLUIDS MUST BE FULLY SYNTHETIC, FULLY WATER SOLUBLE AND FREE OF SULFUR, SILICONE, AND CHLORINE.		DESIGNER: SUS Team (D/SJK) DRAFTER: K. BUCKLAND CHECKER: R. JONES APPROVAL:	SIZE: E DWG. NO.: D0902456 REV.: v2
MATERIAL: N/A FINISH: N/A µinch		SYSTEM: ADVANCED LIGO SUB-SYSTEM: COG	SCALE: 1:1 PROJECTION:

ITEM NO.	PART NUMBER	DESCRIPTION	MATERIAL	REQ	SPARE	TOTAL
2	D080751	Production Ear	Suprasil 312	2		2
1	D080657	a	a	1		1

D:\000001\OPTIC WITH EARS ASSEMBLY\PART\PART REV-V2 DRAWING FOR REV-V2.XXD