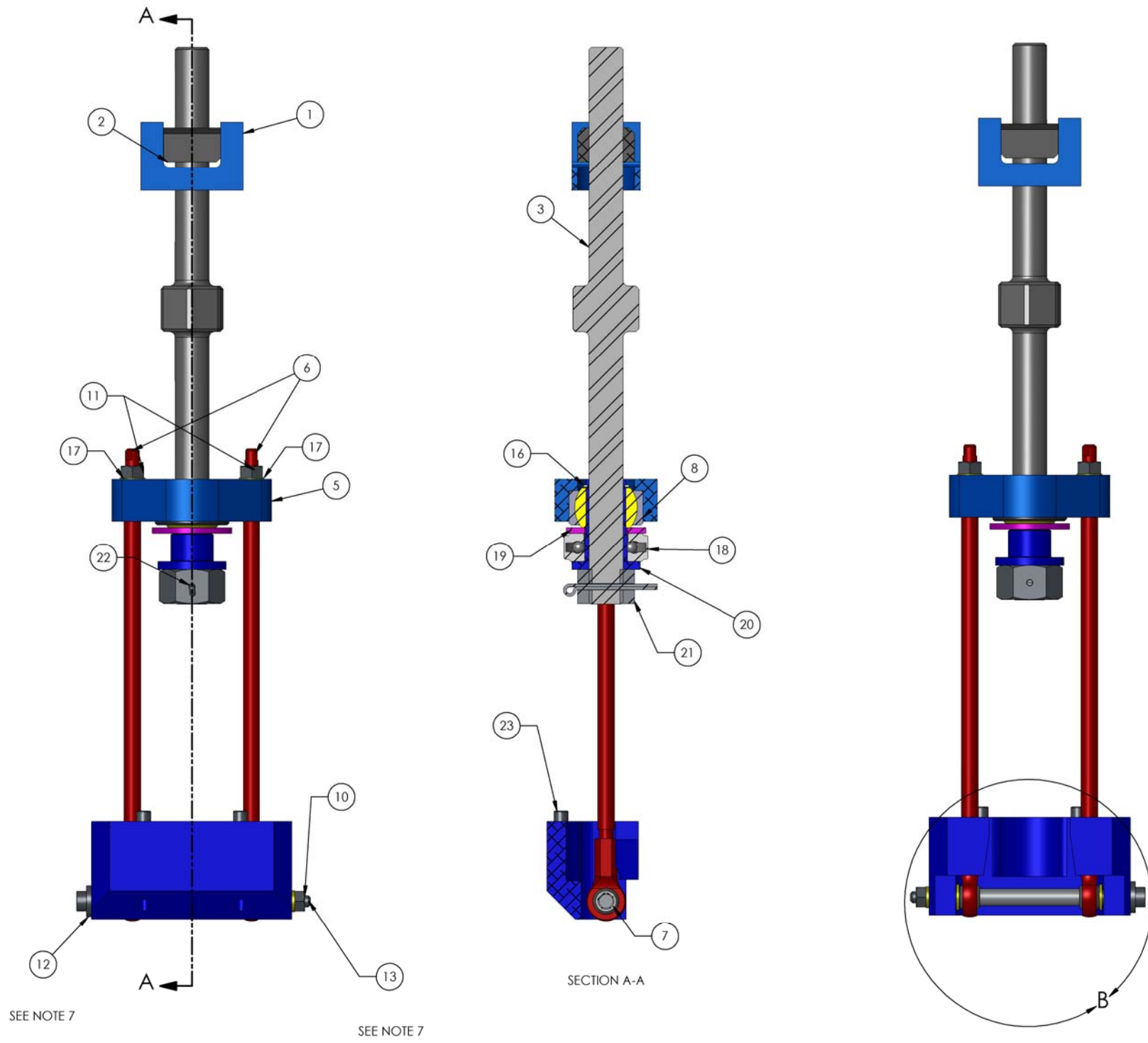


NOTES CONTINUED:
 5. VENDOR REFERENCES ARE PROVIDED AS EXAMPLES OF PARTS MEETING ALL REQUIRED SPECIFICATIONS. EQUIVALENTS ARE ALWAYS ACCEPTABLE UNLESS OTHERWISE SPECIFIED.
 6. REFER TO LIGO E0900357 FOR ASSEMBLY AND LOADING PROCEDURE.
 7. THE ORIENTATION OF ITEMS 7, 10 AND 11 MUST BE AS SHOWN, TO MAXIMIZE THE CLEARANCE AS THE ASSY WILL EXTEND DOWN INTO D0901181 STAGE 2.

REV.	DATE	DCN #	DRAWING TREE #
v1	19 Feb. 2010	E0900391	E1000025



ITEM NO.	PART NUMBER	DESCRIPTION	MATERIAL	REQ
23	McMaster_90145A583	Dowel Pin 5/16 x 1" lg	18-8 SS	2
22	McMaster_98401A479	Cotter Pin .125 dia x 1.75 lg	18-8 SS	1
21	Dependable_Acme_Threated_products, Nut .750-10-ACME-2C	Nut .750-10-ACME-2C	300 SSSL	1
20	D0902186	CENTERING WASHER, BLADE PULLER ASSY, STAGE 1-2, aLIGO BSC ISI	6061-T6 Al	1
19	McMaster_98019A524	Washer 1.75 od x .94 id x .10-.14 thk.	300 SSSL	1
18	Stock Drive Products_S9912Y-TB093184	Thrust Bearing 1.844 od x .938 id x .625 thk	Chrome Stainless Steel	1
17	McMaster_98017A689	Washer .56 od x .32 id x .02-.04 thk	300 SSSL	2
16	McMaster_91590A131	RETAINING RING	15-7 MO SS	1
15	McMaster_98017A690	Washer .57 od x .32 id x .05-.07 thk	300 SSSL	2
14	McMaster_59915K483	Ball Joint Rod End 5/16-24 thd x 5/16 id 7/8 od 1.38 lg	302 SSSL	2
13	McMaster_90298A603	Shoulder Screw 5/16 shoulder 4.5 lg 1/4-20 thd	18-8 SS	1
12	McMaster_98370A017	Washer .68 od x .344 id x .11-.14 thk	18-8 SS	1
11	McMaster_91845A030	Hex Nut 5/16-18	18-8 SS	2
10	McMaster_91845A029	Hex Nut 1/4-20	18-8 SS	1
9	McMASTER_90945A761	WASHER .26 ID X .47 OD X .06-.07 THK (NAS 620-C416)	300 SSSL	1
8	Aurora_Bearing_AWC-14T	Spherical Bearing 1.625 od x .875 id	N/A	1
7	D0902189	SPRING PRELOAD SPACER, BLADE PULLER ASSY, aLIGO BSC ISI	6061 Alloy	1
6	D0902188	SPRING PRELOAD TOOL ROD, BLADE PULLER ASSY, STAGE 1-2, aLIGO BSC ISI	304 SSSL	2
5	D0902187	SPRING PRELOAD CONNECTION BLOCK, BLADE PULLER ASSY, STAGE 1-2, aLIGO BSC ISI	304 SSSL	1
4	D0902192	SPRING PRELOAD END BRACKET, BLADE PULLER ASSY, STAGE 1-2, aLIGO BSC ISI	6061-T6 Al	1
3	D0902193	SPRING BLADE PULLER BOLT, BLADE PULLER ASSY, STAGE 1-2, aLIGO BSC ISI	420 SSSL	1
2	D0902190	SPRING PRELOAD PIVOT, BLADE PULLER ASSY, aLIGO BSC ISI	NITRONIC 60	1
1	D0902191	SPRING PRELOAD SADDLE, BLADE PULLER ASSY, aLIGO BSC ISI	NITRONIC 60	1

NOTES AND TOLERANCES: (UNLESS OTHERWISE SPECIFIED)
 1. INTERPRET DRAWING PER ASME Y14.5-1994.
 2. REMOVE ALL SHARP EDGES, R.02 MIN.
 3. DO NOT SCALE FROM DRAWING.
 4. ALL MACHINING FLUIDS MUST BE FULLY SYNTHETIC, FULLY WATER SOLUBLE AND FREE OF SULFUR, SILICONE, AND CHLORINE.

DIMENSIONS ARE IN INCHES
 TOLERANCES:
 .XX ± n/a
 .XXX ± n/a
 ANGULAR ± n/a

MATERIAL: N/A
 FINISH: N/A μinch

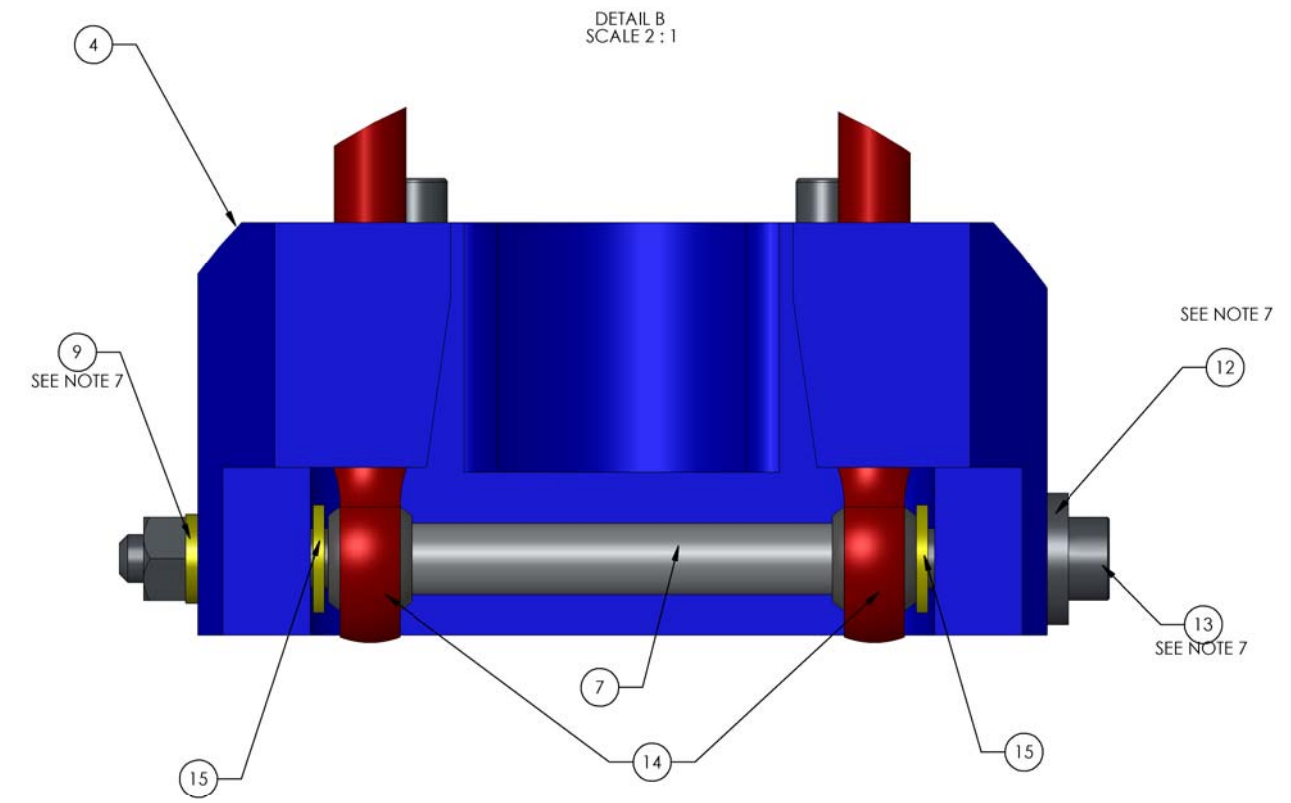
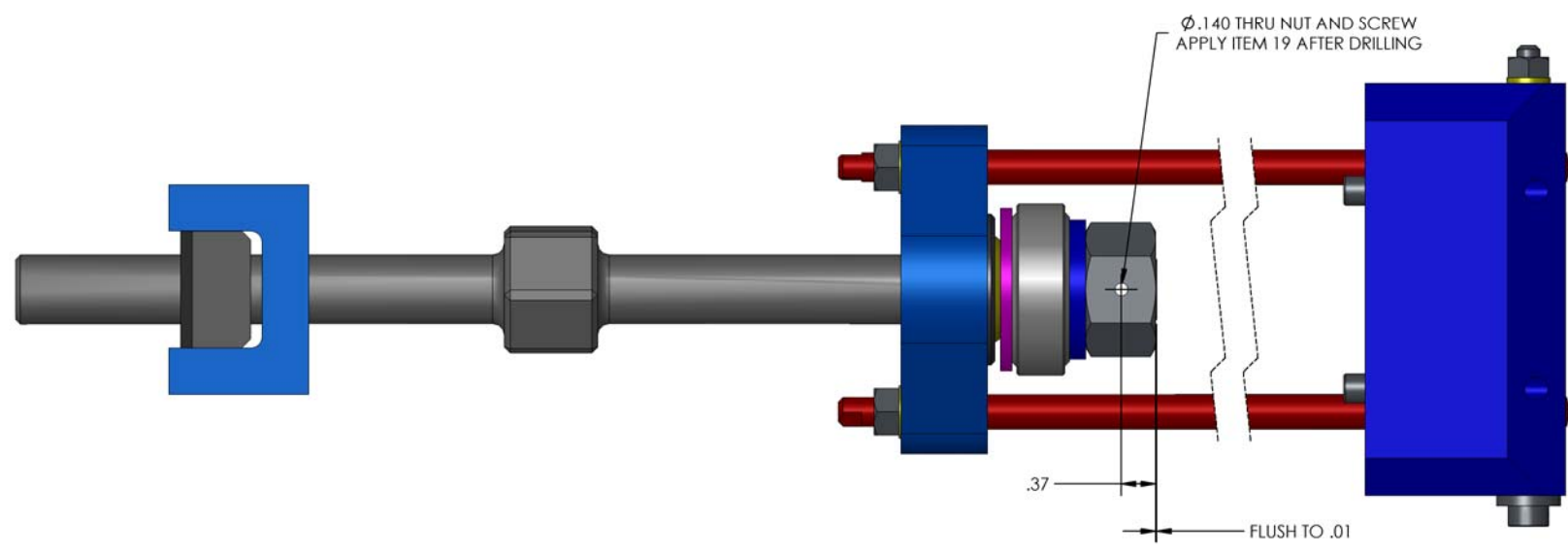
SYSTEM: ADVANCED LIGO
 SUB-SYSTEM: SEI
 NEXT ASSY: D0901182

LIGO CALIFORNIA INSTITUTE OF TECHNOLOGY MASSACHUSETTS INSTITUTE OF TECHNOLOGY

PART NAME: PULLER BLADE ASSEMBLY, STAGE 1-2, aLIGO BSC ISI

DESIGNER: C. RAMET	19 Feb. 2010	SIZE: D	DWG. NO.: D0902454	REV.: v1
DRAFTER: J. HILLARD	19 Feb. 2010			
CHECKER: F. MATHICHARD	19 Feb. 2010			
APPROVAL: K. MASON	19 Feb. 2010	SCALE: 1:1.5	PROJECTION:	SHEET 1 OF 2

D0902454 Blade Puller Assembly, Stage 1-2, aLIGO BSC ISI, PART FROM REV. 3.003, DRAWING FROM REV. X.007



CALIFORNIA INSTITUTE OF TECHNOLOGY MASSACHUSETTS INSTITUTE OF TECHNOLOGY		REV.
SIZE	DWG. NO.	REV.
D	D0902454	v1
SCALE: 1:1	PROJECTION:	SHEET 2 OF 2

D0902454 Blade Puller Assembly, Stage 1-2, dLCO BIC IS, PART FDM REV. X-003, DRAWING FDM REV. X-007