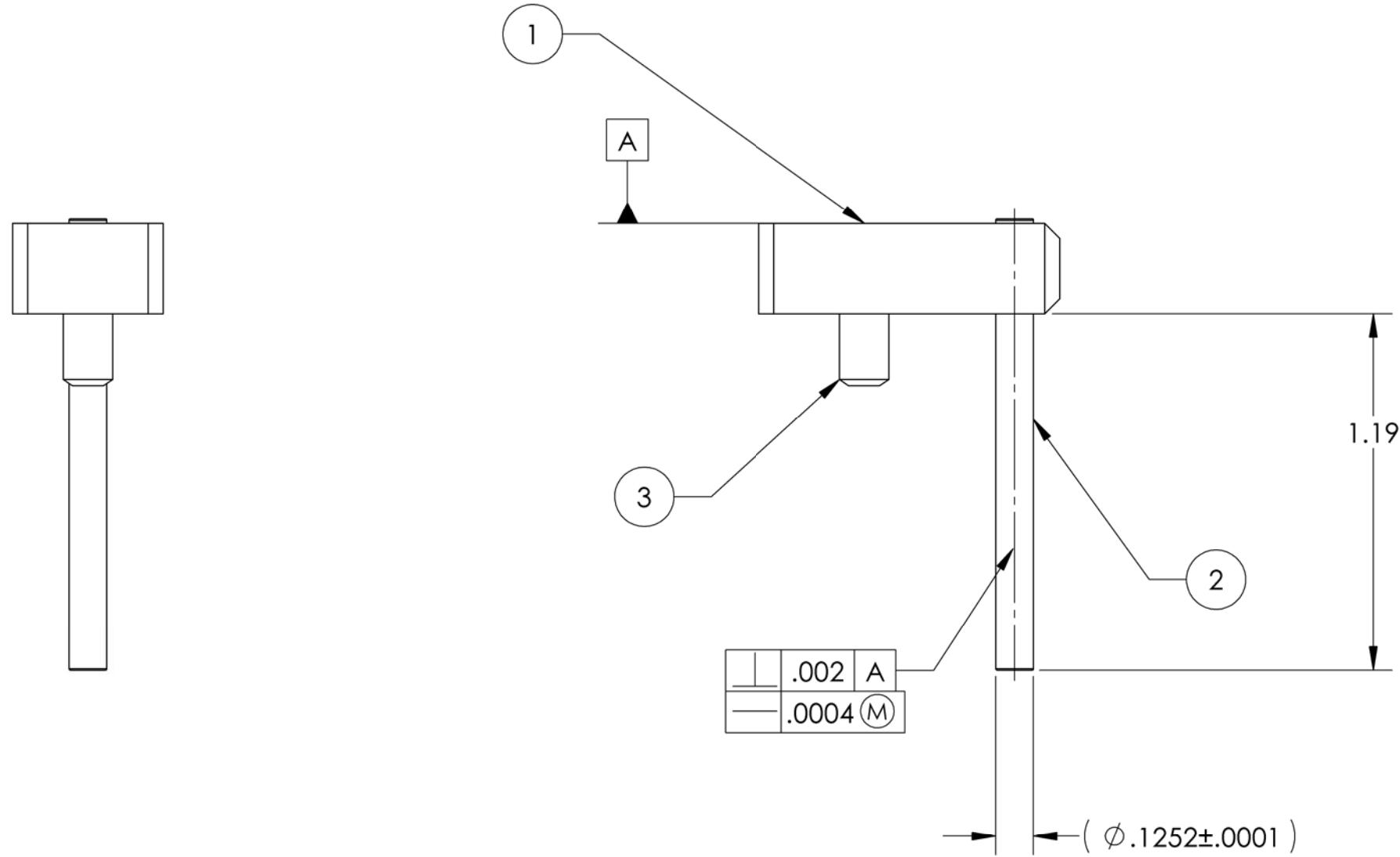
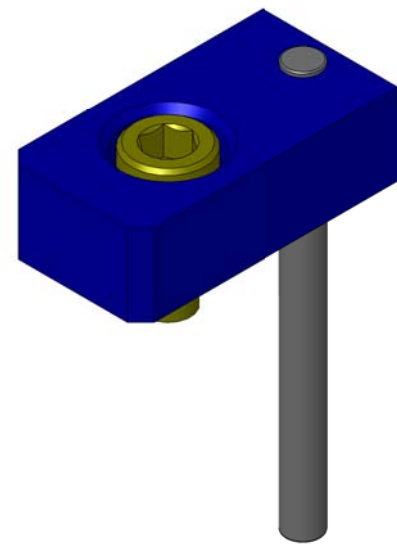


8 7 6 5 4 3 2 1

NOTES CONTINUED:
 5. VENDOR REFERENCES ARE PROVIDED AS EXAMPLES OF PARTS ALL REQUIRED SPECIFICATIONS. EQUIVALENTS ARE ALWAYS ACCEPTABLE UNLESS OTHERWISE SPECIFIED.
 6. ASSEMBLY PROCEDURE: E0900357 AND E1000096.

REV.	DATE	DCN #	DRAWING TREE #
v1	22 Feb. 2010	E1000049	E1000025



ITEM NO.	PART NUMBER	DESCRIPTION	MATERIAL	REQ
3	McMASTER_92196A192	SCREW SHCS, 8-32 X 3/8 LG	18-8 SSTL	1
2	McMASTER_98380A479	DOWEL PIN, .1252 DIA X 1.5 LG (OVERSIZE)	416 SSTL	1
1	D0902436	PIN CARRIER FOR LARGE PIN KEY. αLIGO BSC ISI	6061-T6 Al	1

NOTES AND TOLERANCES: (UNLESS OTHERWISE SPECIFIED)				LIGO CALIFORNIA INSTITUTE OF TECHNOLOGY MASSACHUSETTS INSTITUTE OF TECHNOLOGY		PART NAME	
DIMENSIONS ARE IN INCHES TOLERANCES: .XX ±.015 .XXX ±.005 ANGULAR ±.5°				1. INTERPRET DRAWING PER ASME Y14.5-1994. 2. REMOVE ALL SHARP EDGES, R.02 MIN. 3. DO NOT SCALE FROM DRAWING. 4. ALL MACHINING FLUIDS MUST BE FULLY SYNTHETIC, FULLY WATER SOLUBLE AND FREE OF SULFUR, SILICONE, AND CHLORINE.		PIN KEY LARGE ACTUATOR TOOLING, αLIGO BSC ISI	
MATERIAL		FINISH		NEXT ASSY		DESIGNER S.BARNUM 22 Feb. 2010 DRAFTER M.HILLARD 22 Feb. 2010 CHECKER F.MATICHARD 22 Feb. 2010 APPROVAL K.MASON 22 Feb. 2010	
N/A		N/A μinch		D0901102, D0901103		SIZE DWG. NO. B D0902433 SCALE: 2:1 PROJECTION:	
							SHEET 1 OF 1

8 7 6 5 4 3 2 1

D0902433 Pin Key Large Actuator Tooling, PART PDM REV: X-013, DRAWING PDM REV: X-005