

D0902422 Large Vert. Actuator Connector Right, Stage 0-1, aLIGO BSC ISI, PART PDM REV: X-012, DRAWING PDM REV: X-009

REV.	DATE	DCN #	DRAWING TREE #
v1	22 Feb. 2010	E1000049	E1000025
v2	28 July 2010	E1000339	E1000025

NOTES CONTINUED:

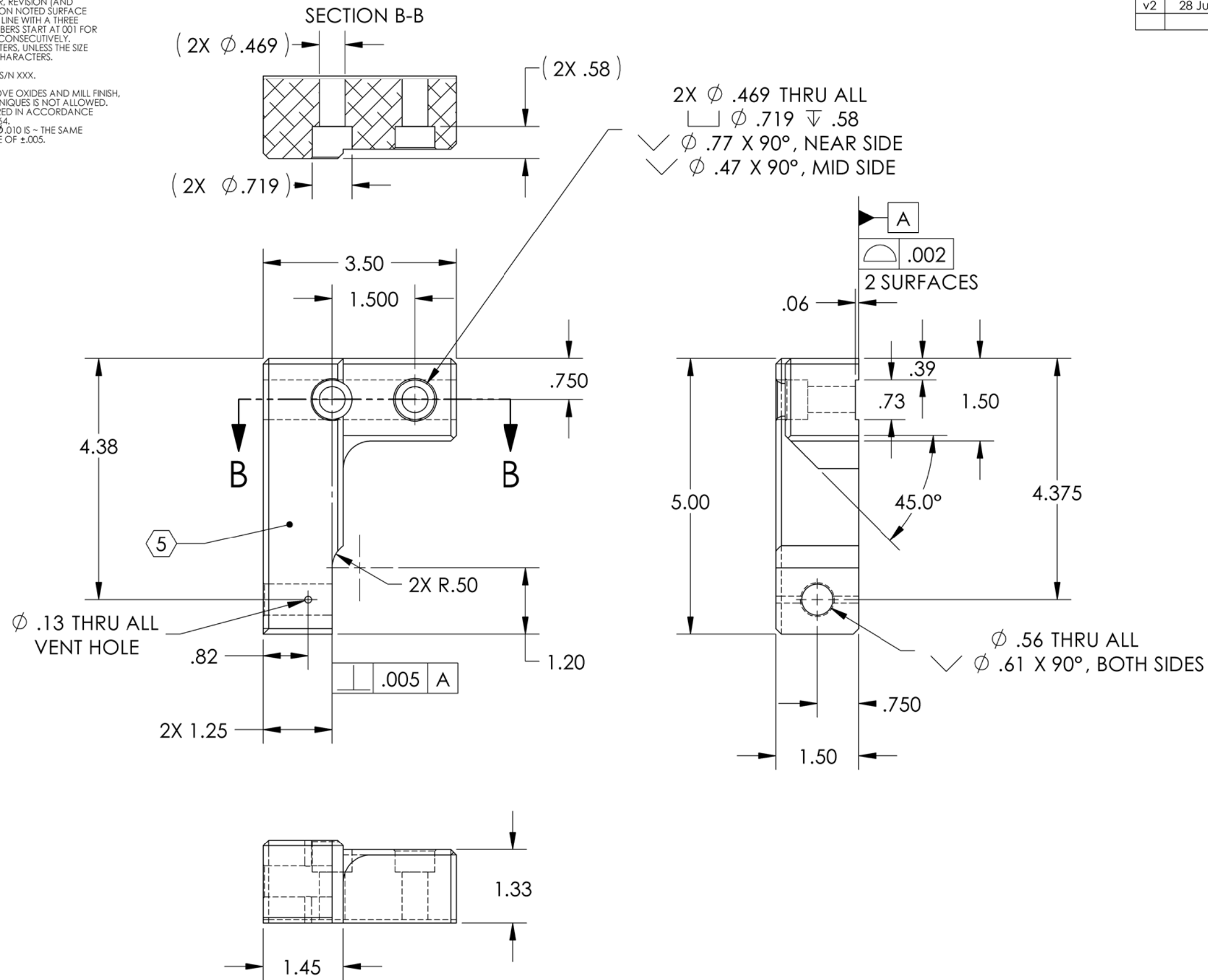
5. SCRIBE, ENGRAVE, OR MECHANICALLY STAMP (NO INKS OR DYES) DRAWING PART NUMBER, REVISION (AND VARIANT OR 'TYPE' IF APPLICABLE ON NOTED SURFACE OF PART FOLLOWED ON THE NEXT LINE WITH A THREE DIGIT SERIAL NUMBER, SERIAL NUMBERS START AT 001 FOR THE FIRST ARTICLE AND PROCEED CONSECUTIVELY. USE MINIMUM 0.12 HIGH CHARACTERS, UNLESS THE SIZE OF THE PART DICTATES SMALLER CHARACTERS. A VIBRATORY TOOL MAY BE USED. EXAMPLE DXXXXXXX-VY, TYPE-XX, S/N XXX.

6. APPROXIMATE WEIGHT = 1.30 LB.

7. MACHINE ALL SURFACES TO REMOVE OXIDES AND MILL FINISH. USE OF ABRASIVE REMOVAL TECHNIQUES IS NOT ALLOWED.

8. ALL PARTS SHALL BE MANUFACTURED IN ACCORDANCE WITH LIGO SPECIFICATION E0900364.

9. A TRUE POSITION TOLERANCE OF $\phi .010$ IS - THE SAME AS A CONVENTIONAL TOLERANCE OF $\pm .005$.



NOTES AND TOLERANCES: (UNLESS OTHERWISE SPECIFIED)	
DIMENSIONS ARE IN INCHES	
TOLERANCES: .XX $\pm .015$.XXX $\pm .005$	
ANGULAR $\pm 0.5^\circ$	
1. INTERPRET DRAWING PER ASME Y14.5-1994. 2. REMOVE ALL SHARP EDGES, R.02 MIN. 3. DO NOT SCALE FROM DRAWING. 4. ALL MACHINING FLUIDS MUST BE FULLY SYNTHETIC, FULLY WATER SOLUBLE AND FREE OF SULFUR, SILICONE, AND CHLORINE.	
MATERIAL	FINISH
6061-T6 Al	63 μ inch

CALIFORNIA INSTITUTE OF TECHNOLOGY MASSACHUSETTS INSTITUTE OF TECHNOLOGY		PART NAME		LARGE VERT. ACTUATOR CONNECTOR RIGHT, STAGE 0-1, aLIGO BSC ISI	
SYSTEM	ADVANCED LIGO	SUB-SYSTEM	SEI	DESIGNER	S.BARNUM 22 Feb. 2010
NEXT ASSY	D0901103	CHECKER	F.MATICHARD 22 Feb. 2010	APPROVAL	K.MASON 22 Feb. 2010
SIZE	DWG. NO.	REV.			
B	D0902422	v2			
SCALE:	1:2	PROJECTION:	SHEET 1 OF 1		