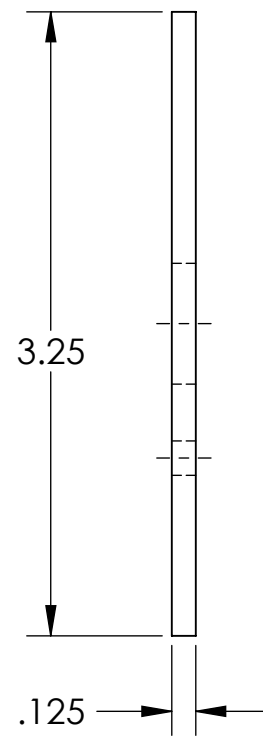
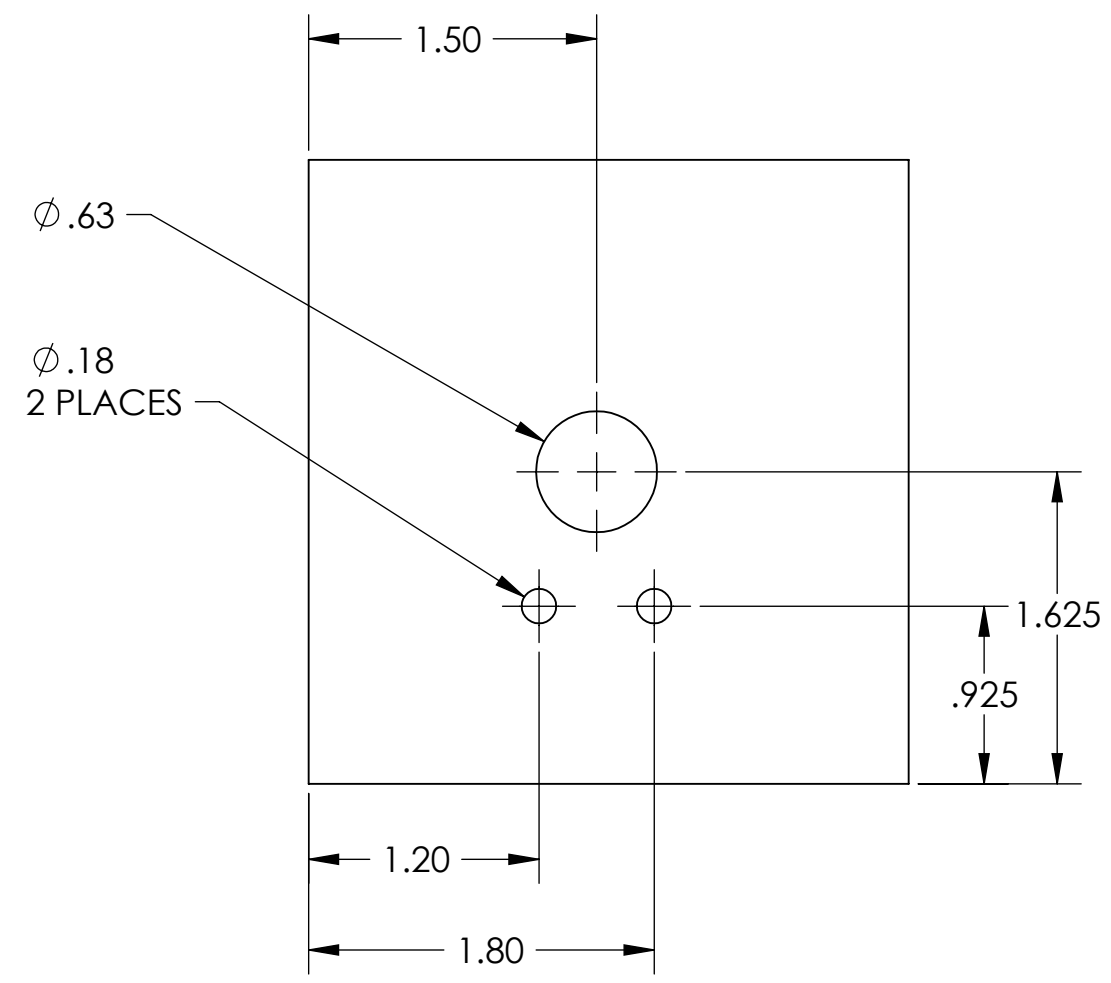
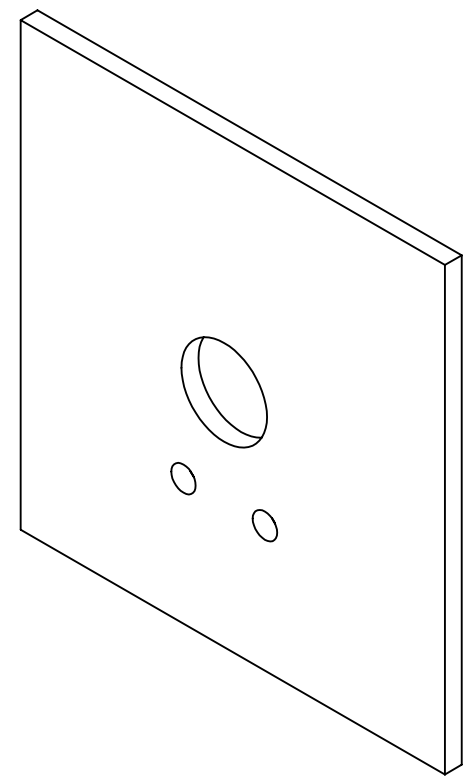
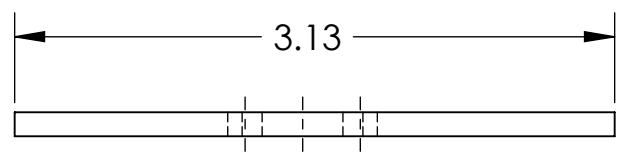


8 7 6 5 4 3 2 1

NOTES CONTINUED:

5. PACKAGING SHALL INCLUDE DRAWING AND REVISION NUMBER, UNIQUE THREE DIGIT SERIAL NUMBER FOR EACH PART, AND QUANTITY. SERIAL NUMBERS START AT 001 FOR THE FIRST ARTICLE AND PROCEED CONSECUTIVELY. EXAMPLE (TAG): DXXXXXX-VY, TYPE-XX, QTY: TBD
 6. APPROXIMATE WEIGHT = 0.091LB.

REV.	DATE	DCN #	DRAWING TREE #
-	-	E1100085	-
-	-	-	-
-	-	-	-



D0902394 ALIGO IO STRAIGHT HA6 BAFFLE, PART PDM REV: X-006, DRAWING PDM REV: X-003

D C B A

D C B A

NOTES AND TOLERANCES: (UNLESS OTHERWISE SPECIFIED)				UNIVERSITY OF FLORIDA CALIFORNIA INSTITUTE OF TECHNOLOGY MASSACHUSETTS INSTITUTE OF TECHNOLOGY		PART NAME	
DIMENSIONS ARE IN INCHES TOLERANCES: .XX ± .01 .XXX ± .010 ANGULAR ± 0.1°				1. INTERPRET DRAWING PER ASME Y14.5-1994. 2. REMOVE ALL SHARP EDGES, R.02 MIN. 3. DO NOT SCALE FROM DRAWING. 4. ALL MACHINING FLUIDS MUST BE FULLY SYNTHETIC, FULLY WATER SOLUBLE AND FREE OF SULFUR, SILICONE, AND CHLORINE.		STRAIGHT HA6 BAFFLE	
MATERIAL DIRECT SINTERED SiC		FINISH N/A μinch		SYSTEM ADVANCED LIGO		SUB-SYSTEM IOO	
NEXT ASSY				DESIGNER L.WILLIAMS		DATE 19 NOV 2010	
MATERIAL				DRAFTER L.WILLIAMS		DATE 19 NOV 2010	
MATERIAL				CHECKER		DATE	
MATERIAL				APPROVAL		DATE	
MATERIAL				SCALE: 1:1		PROJECTION:	
MATERIAL				SHEET 1 OF 1		SIZE DWG. NO. B D0902394	
MATERIAL				REV.		v3	

8 7 6 5 4 3 2 1