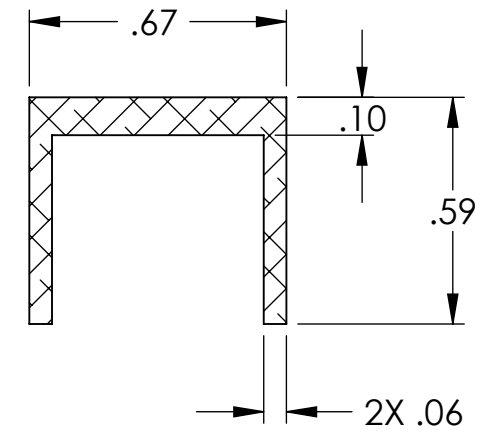
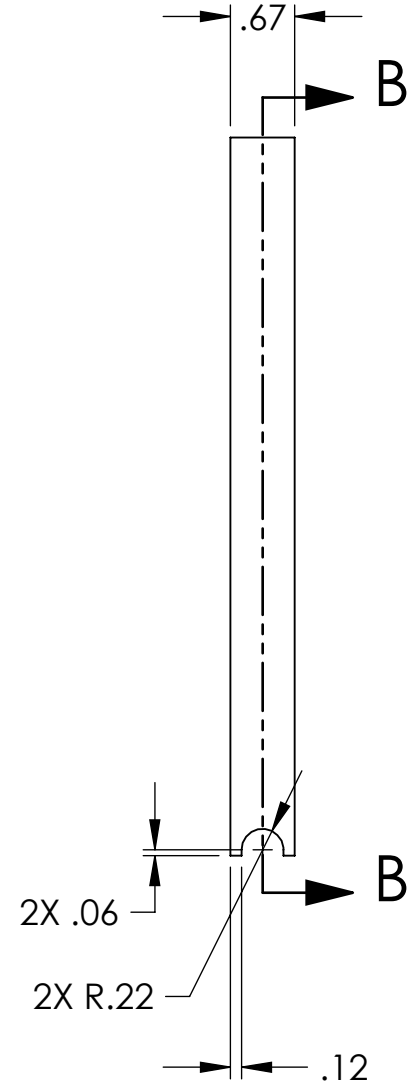
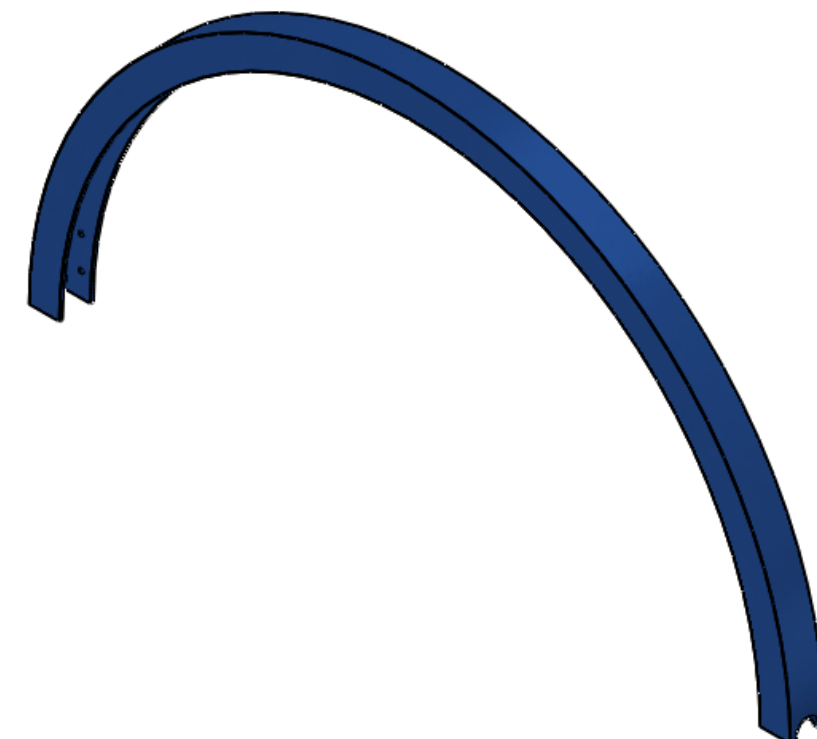
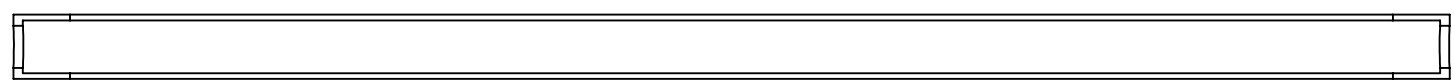
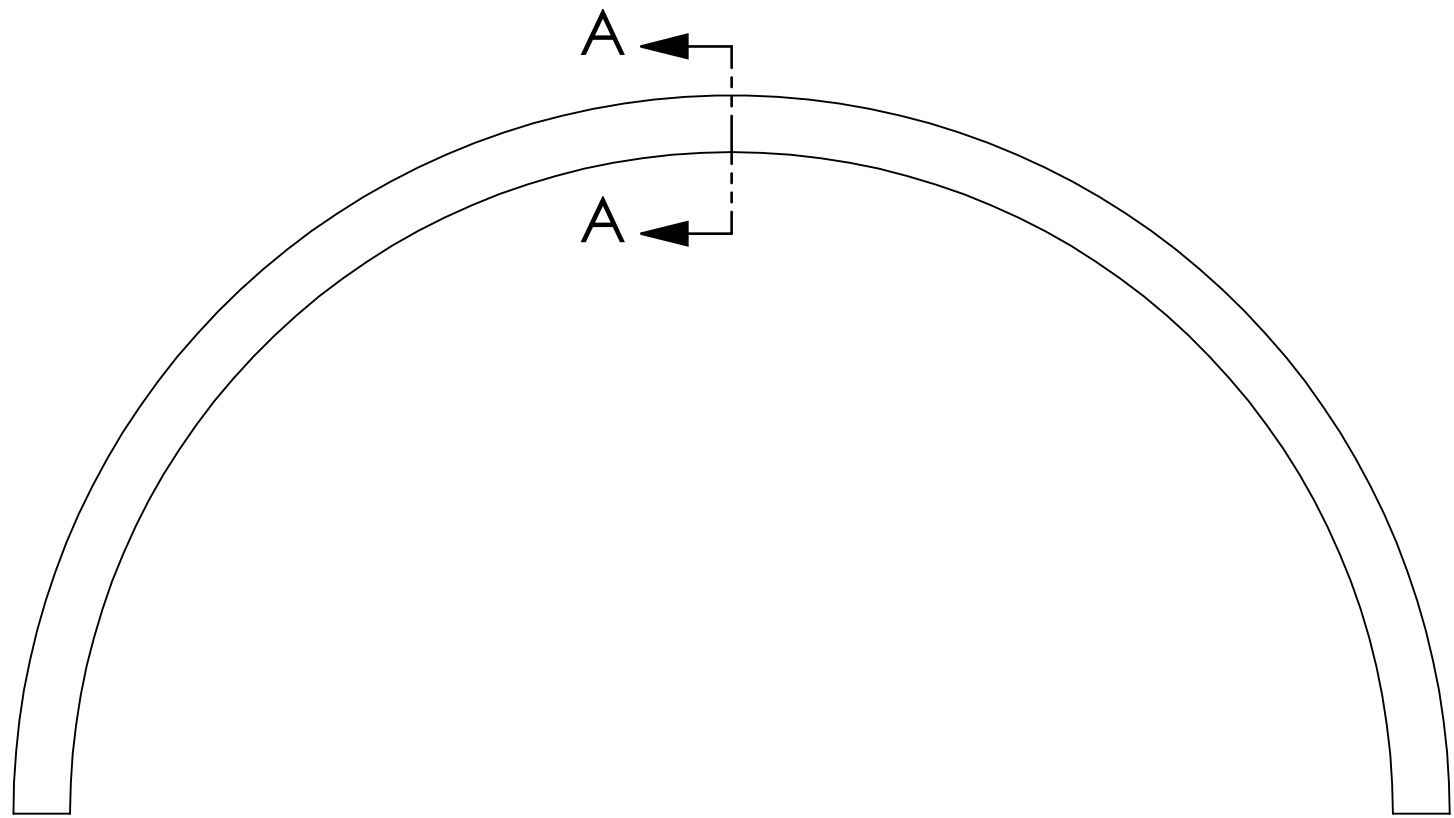


8 7 6 5 4 3 2 1

NOTES CONTINUED:
 5. BAG ALL ITEMS AND MARK OR TAG EACH BAG WITH DRAWING NUMBER, REVISION, AND QUANTITY. EXAMPLE: DXXXXXX-VY, QTY: TBD
 6. MACHINE ALL SURFACES
 7. ALL PROCESSES INCLUDING BENDING OR ROLLING MUST BE DONE WITH CLEAN TOOLING TO AVOID IMBEDDING OF CONTAMINANTS

REV.	DATE	DCN #	DRAWING TREE #
v1	22 OCT 2009	D0900345-V1	E0900344-v1
-	-	-	-
-	-	-	-



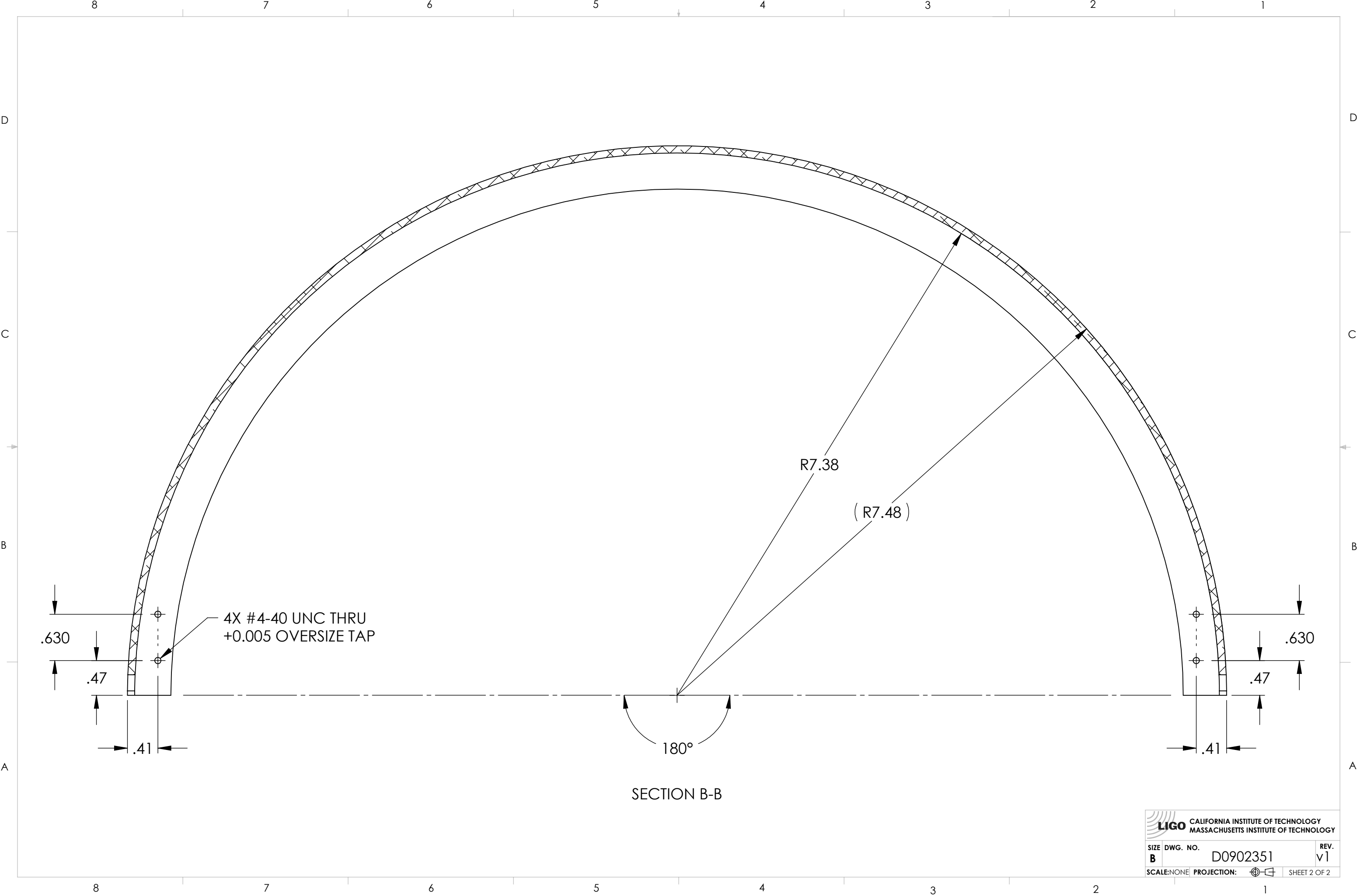
SECTION A-A

D0902351 AdLIGO TCS Ring Heater Shield, PART PDM REV: X-012, DRAWING PDM REV: X-017


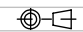
8 7 6 5 4 3 2 1

DIMENSIONS ARE IN INCHES		NOTES AND TOLERANCES: (UNLESS OTHERWISE SPECIFIED)		LIGO CALIFORNIA INSTITUTE OF TECHNOLOGY MASSACHUSETTS INSTITUTE OF TECHNOLOGY		PART NAME	
TOLERANCES: .XX ± .01 .XXX ± .005		1. INTERPRET DRAWING PER ASME Y14.5-1994. 2. REMOVE ALL SHARP EDGES, R.02 MIN. 3. DO NOT SCALE FROM DRAWING. 4. ALL MACHINING FLUIDS MUST BE FULLY SYNTHETIC, FULLY WATER SOLUBLE AND FREE OF SULFUR, SILICONE, AND CHLORINE.		SYSTEM ADVANCED LIGO		ADLIGO TCS RING HEATER SHIELD	
ANGULAR ± 1.0°		MATERIAL 6061-T6 ALUMINUM		SUB-SYSTEM AOS		DESIGNER KMAILAND	
		FINISH 63 μin. R _a		NEXT ASSY D0901269		DRAFTER C. CONLEY	
						DATE 16 JUN 2009	
						SIZE DWG. NO. B D0902351	
						CHECKER APPROVAL	
						REV. v1	
						SCALE: NONE PROJECTION: SHEET 1 OF 2	

D0902351 AdLIGO TCS Ring Heater Shield, PART PDM REV: X-012, DRAWING PDM REV: X-017



SECTION B-B

 CALIFORNIA INSTITUTE OF TECHNOLOGY MASSACHUSETTS INSTITUTE OF TECHNOLOGY	
SIZE DWG. NO. B D0902351	REV. v1
SCALE: NONE PROJECTION: 	SHEET 2 OF 2