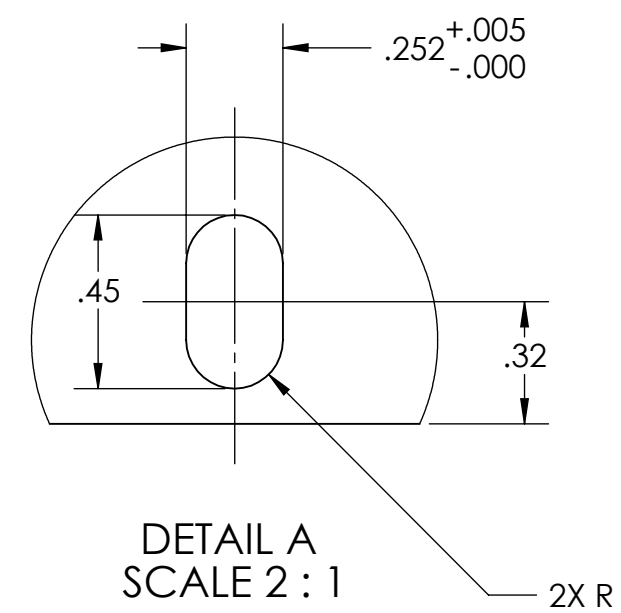
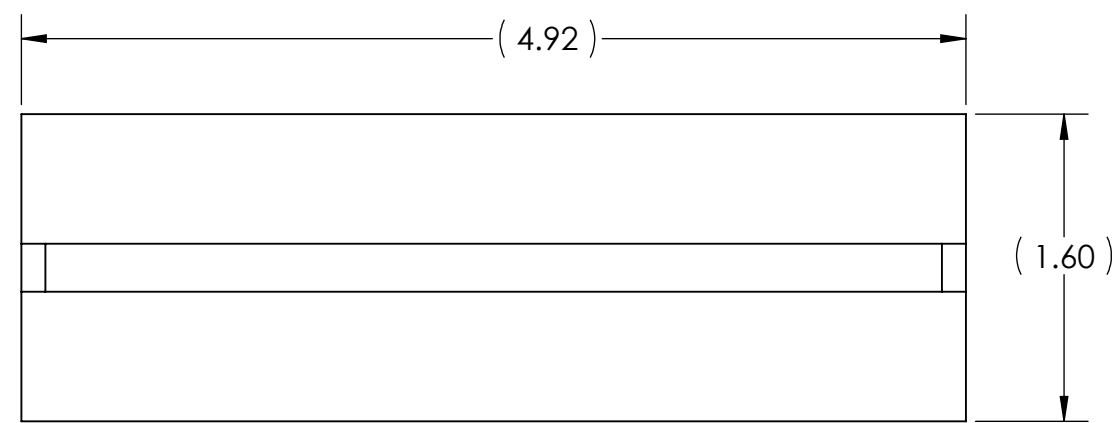
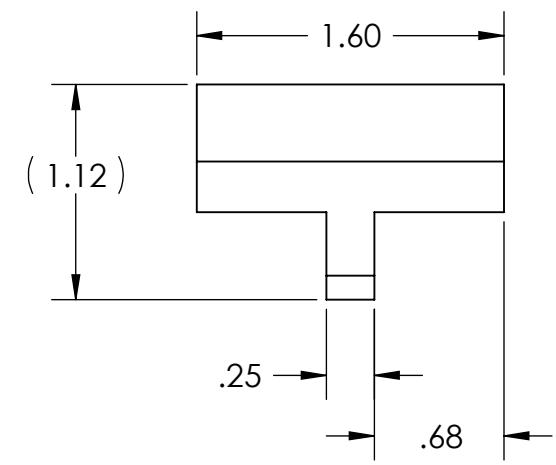
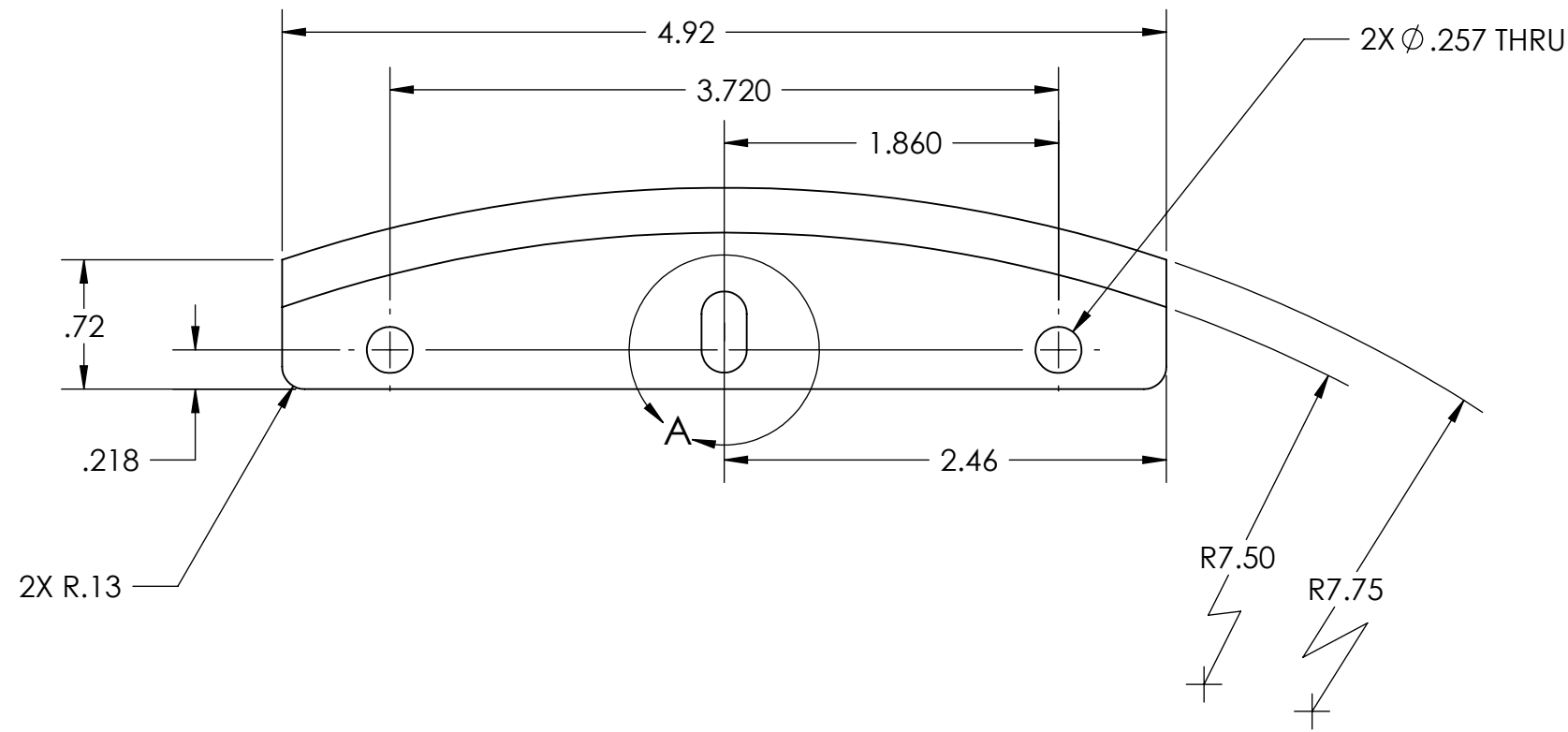


NOTES CONTINUED:
 ⑤ BAG ALL ITEMS AND MARK OR TAG EACH BAG WITH DRAWING NUMBER, REVISION, AND QUANTITY. EXAMPLE: DXXXXXX-VY, QTY: TBD

REV.	DATE	DCN #	DRAWING TREE #
v1	3 NOV 2009	E0900383	



D0902348 Plate, ETM Mirror Stop, COC Container, PART PDM REV: X-001, DRAWING PDM REV: X-001

NOTES AND TOLERANCES: (UNLESS OTHERWISE SPECIFIED)	
DIMENSIONS ARE IN INCHES	
TOLERANCES: .XX ± .01 .XXX ± .005 ANGULAR ± 0.5°	
1. INTERPRET DRAWING PER ASME Y14.5-1994. 2. REMOVE ALL SHARP EDGES, R.02 MIN. 3. DO NOT SCALE FROM DRAWING. 4. ALL MACHINING FLUIDS MUST BE FULLY SYNTHETIC, FULLY WATER SOLUBLE AND FREE OF SULFUR, SILICONE, AND CHLORINE.	
MATERIAL	303 SS
FINISH	32 μinch

CALIFORNIA INSTITUTE OF TECHNOLOGY MASSACHUSETTS INSTITUTE OF TECHNOLOGY		PART NAME Plate, Adjustable, ETM Optic Container	
SYSTEM	ADVANCED LIGO	SUB-SYSTEM	COC
DESIGNER	K. BUCKLAND	6 OCT 2009	SIZE DWG. NO.
DRAFTER	K. BUCKLAND	6 OCT 2009	B D0902348
CHECKER	K. MAILAND	30 OCT 2009	
APPROVAL	C. TORRIE	30 OCT 2009	REV. v1
NEXT ASSY		D0902146	SCALE: 1:1 PROJECTION: SHEET 1 OF 1