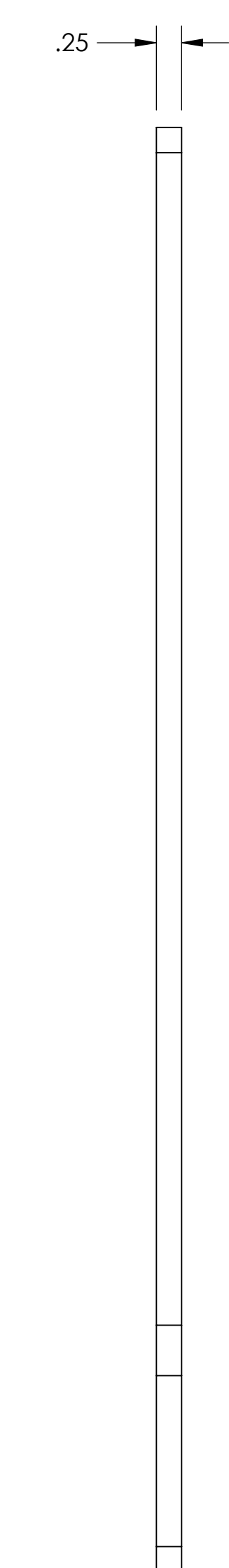
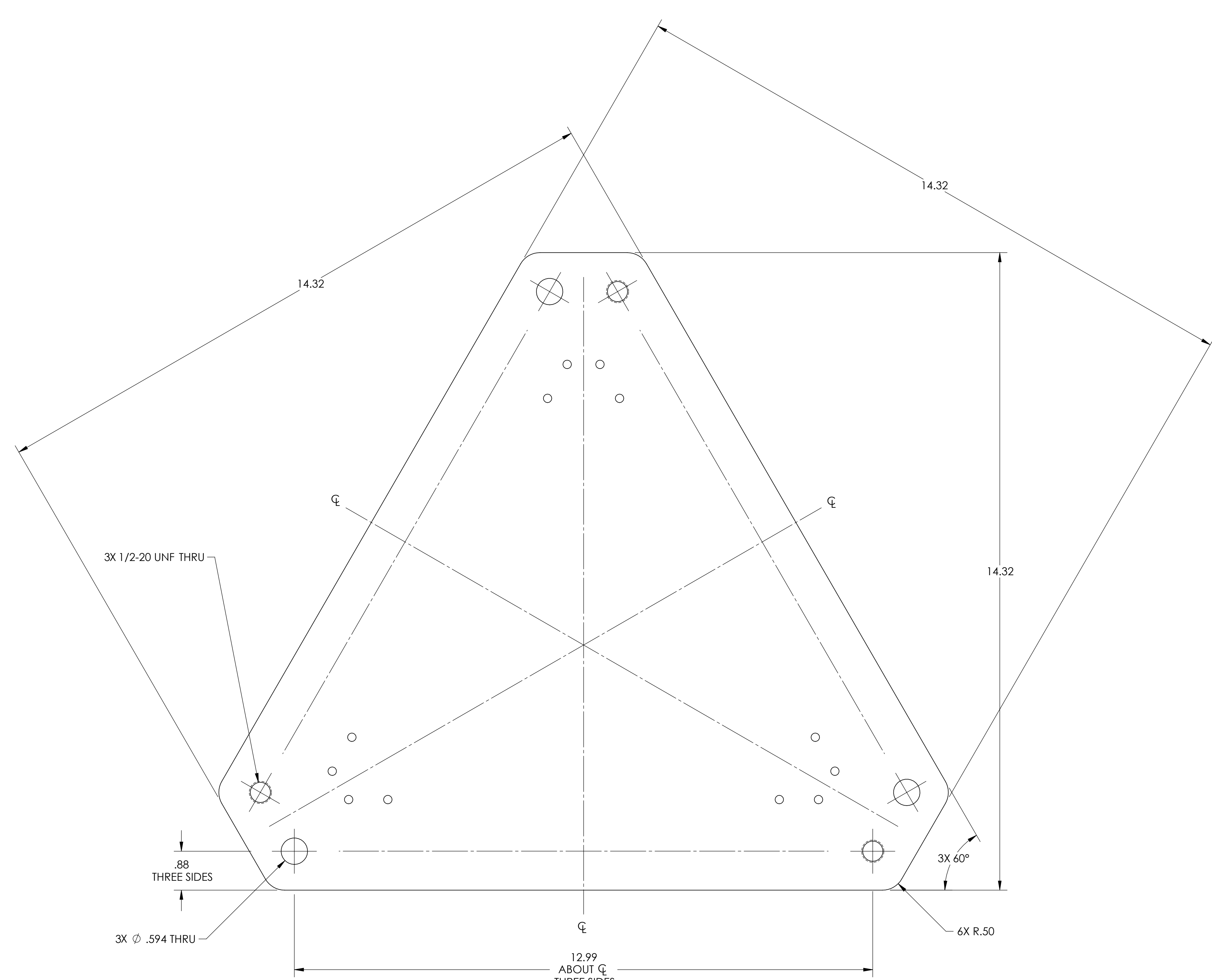
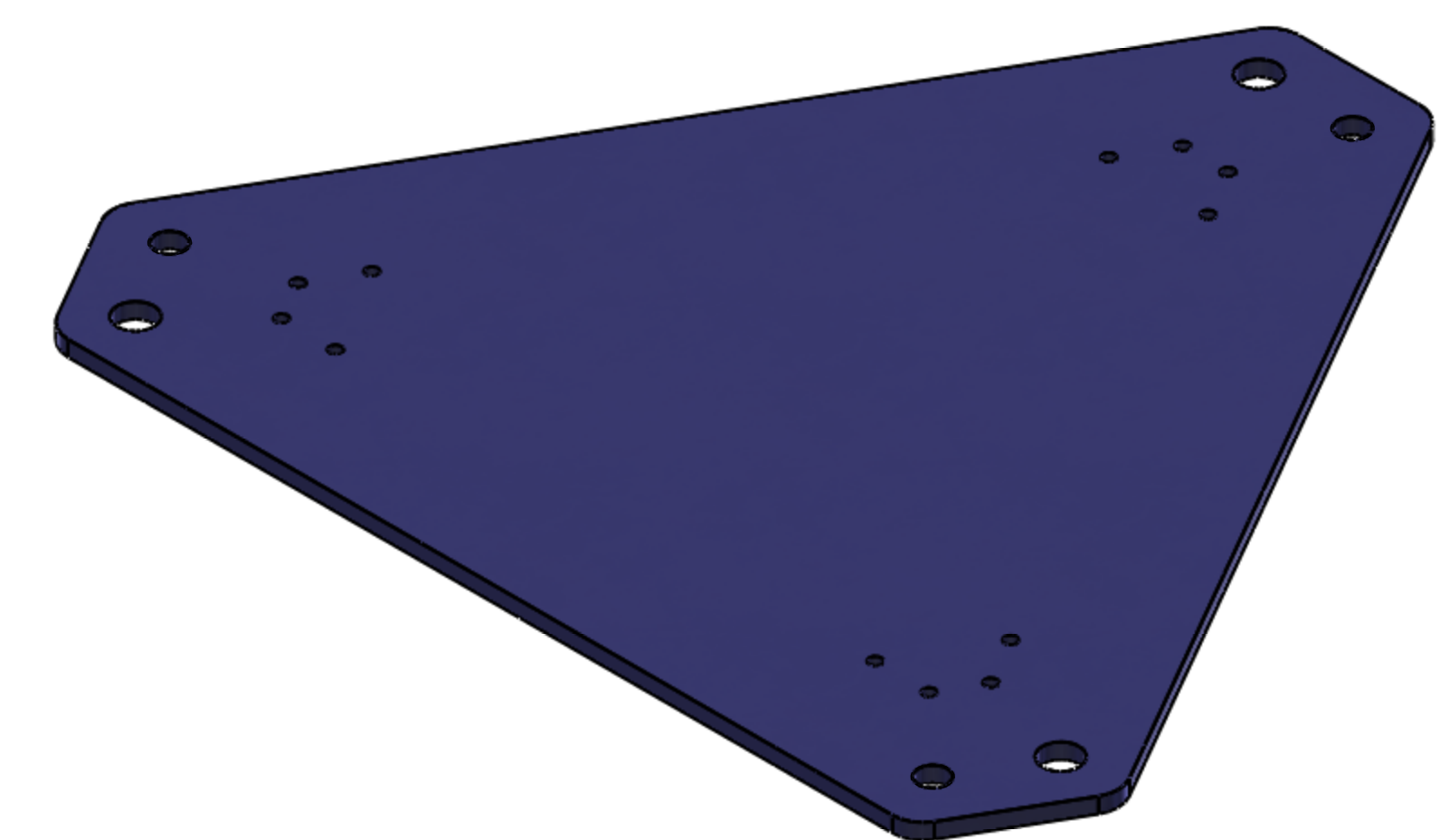


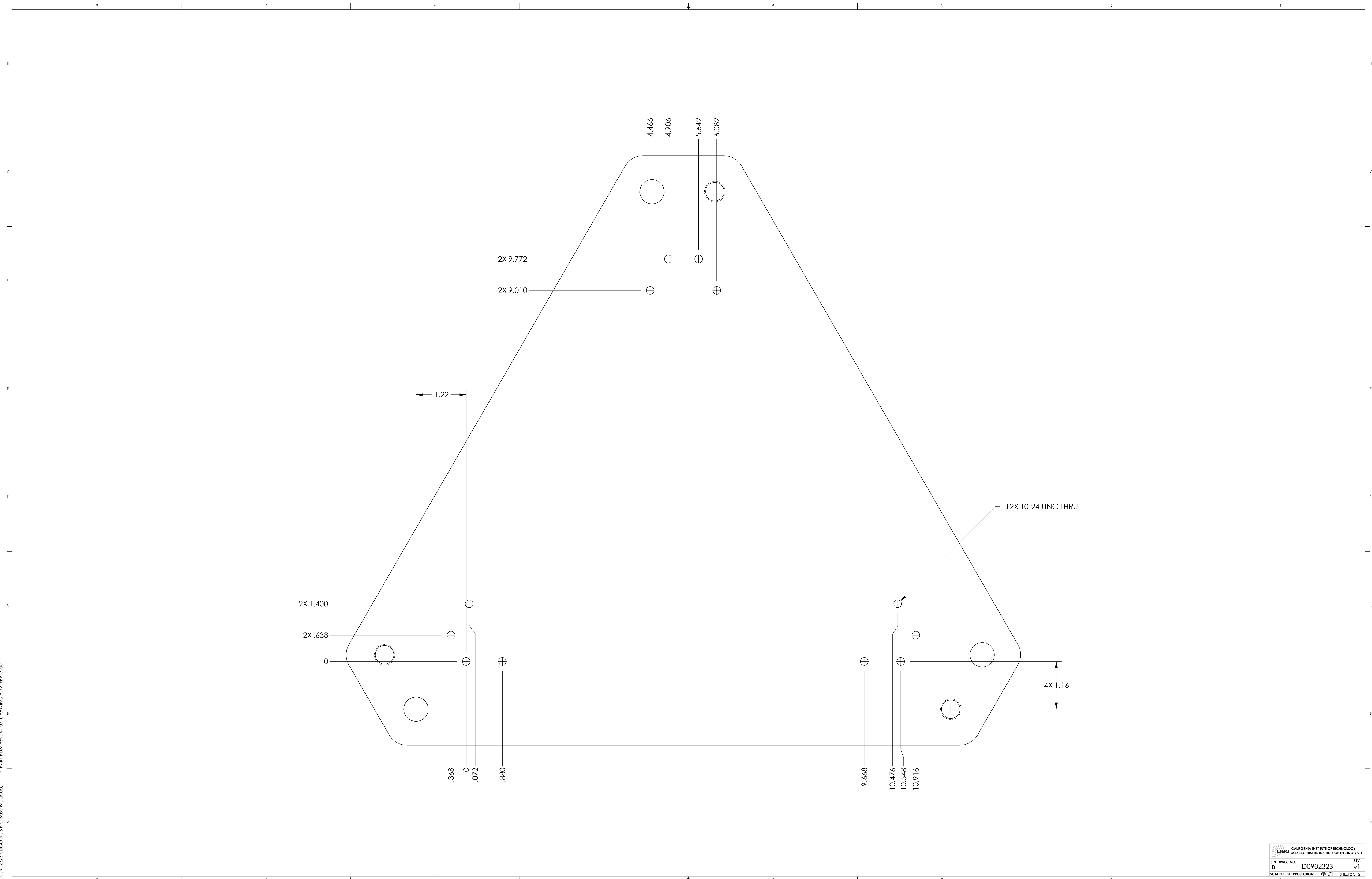
REV.	DATE	DCN #	DRAWING TREE #
v1	17 NOV 2009	E0900399-v1	-
-	-	-	-
-	-	-	-



NOTES CONTINUED:

DIMENSIONS ARE IN INCHES [MM]		NOTES AND TOLERANCES: (UNLESS OTHERWISE SPECIFIED)		 CALIFORNIA INSTITUTE OF TECHNOLOGY MASSACHUSETTS INSTITUTE OF TECHNOLOGY		PART NAME	
TOLERANCES: .XX ± .01 .XXX ± .005		1. INTERPRET DRAWING PER ASME Y14.5-1994. 2. REMOVE ALL SHARP EDGES, R.02 MIN. 3. DO NOT SCALE FROM DRAWING. 4. ALL MACHINING FLUIDS MUST BE FULLY SYNTHETIC, FULLY WATER-SOLUBLE AND FREE OF SULFUR, SILICONE, AND CHLORINE.		SYSTEM ADVANCED LIGO		SUB-SYSTEM AOS	
ANGULAR ± 2°		MATERIAL 6061 ALLOY		NEXT ASSY D0902660		ALIGO AOS PIER BASE MOCK-UP, 11.1 IN	
		FINISH N/A μinch				DESIGNER C. CONLEY 02 OCT 2009	
						DRAFTER C. CONLEY 17 NOV 2009	
						CHECKER D	
						APPROVAL SCALE: NONE PROJECTION:	
						SIZE DWG. NO. D0902323	
						REV. v1	
						SHEET 1 OF 2	

D0902323.dwg:ALIGO AOS Pier Base Mock-up, 11.1 in. PART PDM REV: X-007, DRAWING PDM REV: X-001



D0902323.dwg ACS Pier Base Mock-up, 11.1 in. PART PDM REV: X-007, DRAWING PDM REV: X-001