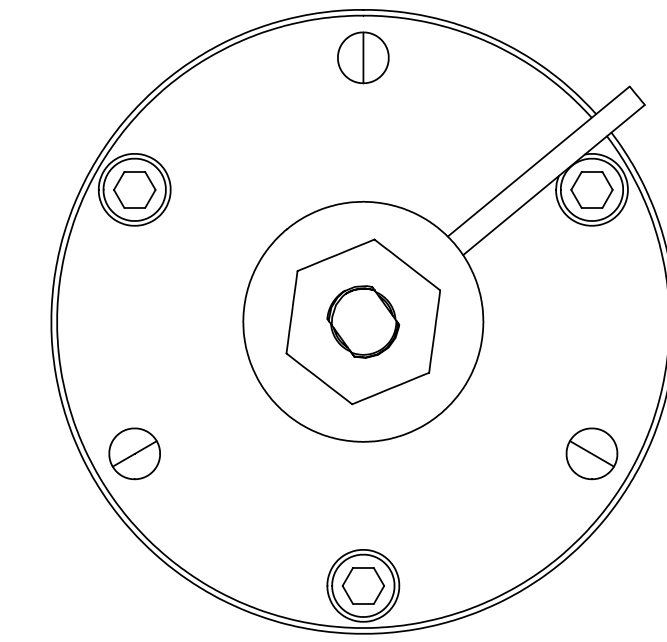
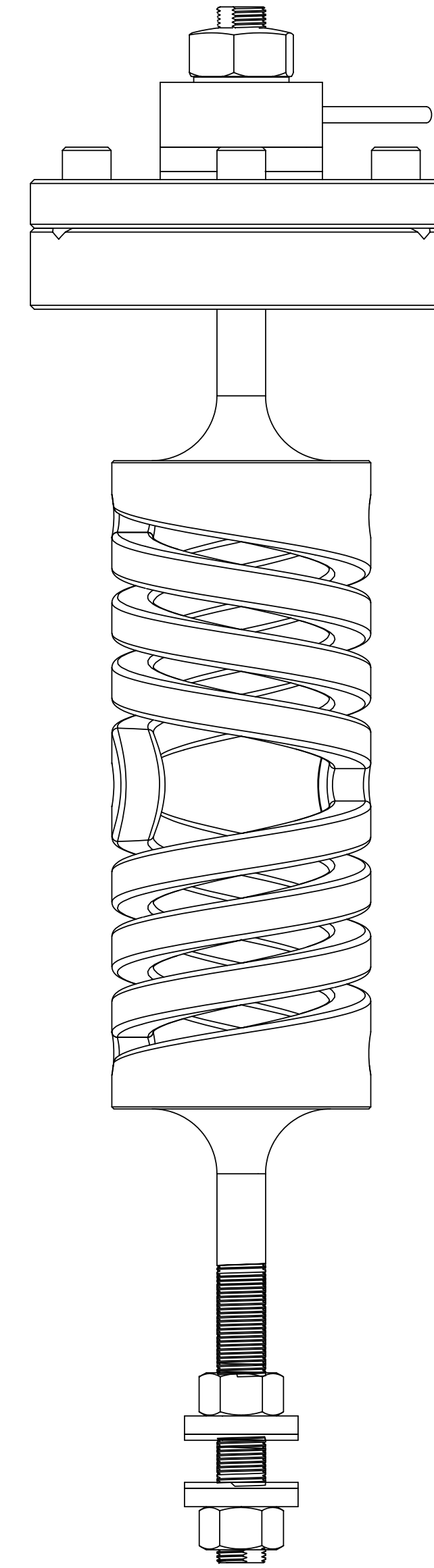
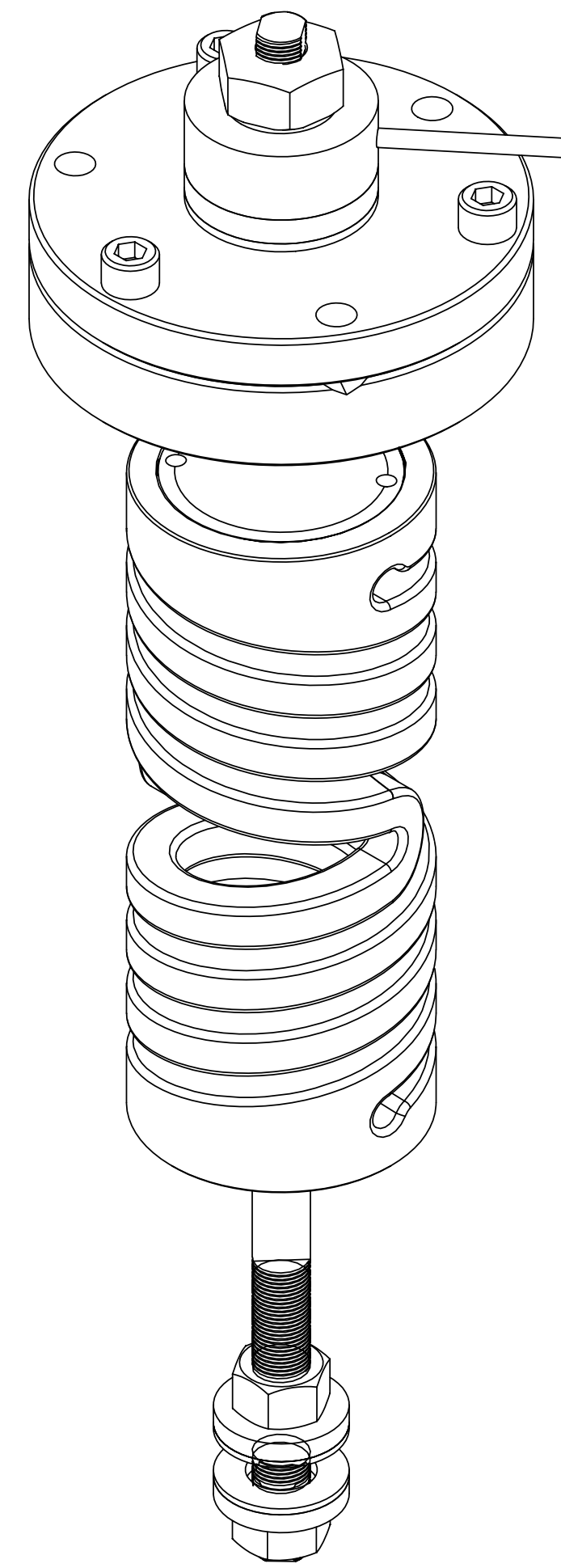
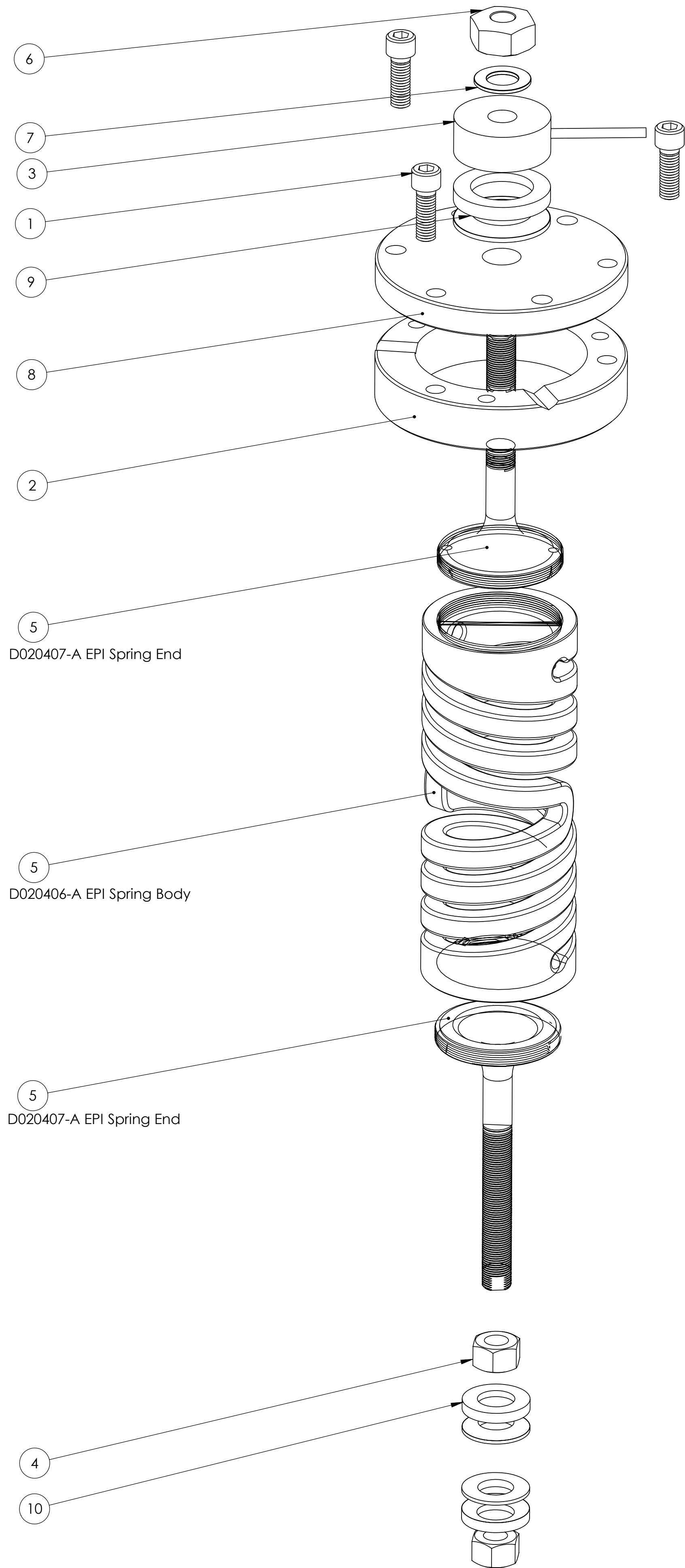


REV	DATE	DCN #	DRAWING TREE #
A	06/08/04	E030595-00-E	



ITEM NO.	Default/QTY.	PART NUMBER	DESCRIPTION	VENDOR
1	3	HQLO-KROM 73134	S.H.C.S. 1/2-20 x 1.500	M. J. Vail Company Inc.
2	1	D020001	EPI Spring Adjustment Plate	Lavallee
3	1	1HD-2K-Y	Load Cell	Transducer Tech.
4	2	D030786	EPI Boot Nut	P & N
5	1	D020408-A	EPI Spring Sub-Assembly	P & N
6	1	D020009	EPI Spring Nut	P & N
7	1	98038A274	F.W. SAE 3/4, O.D.: 1.469	McMaster-Carr
8	1	D020002	EPI Spring Plate	Lavallee
9	1	91944A035	S1 Steel Spherical Washer Set ID: 1.250 OD: 2.500 T: .500	McMaster-Carr
10	2	91944A490	S1 Steel Spherical Washer Set ID: .750 OD: 1.625 T: .375	McMaster-Carr

PARTS LIST			
UNLESS OTHERWISE SPECIFIED:	DATE	NAME	
DIMENSIONS ARE IN INCHES	DRAWN	06.08.04	O.S.P/JELD
TOLERANCES: .X ± .06 .XX ± 0.020" .XXX ± 0.005" ANGULAR ± .37° FINISH	STRESS		
	ENGINEER		
	CHECKED		
	COMMENTS:		
LIGO CALIFORNIA INSTITUTE OF TECHNOLOGY MASSACHUSETTS INSTITUTE OF TECHNOLOGY External Pre-Isolator HEP1			REV A
SYSTEM SUB-SYSTEM NEXT ASSY			
PART NAME Spring Assembly			
SIZE D			DWG. NO. D030320
SCALE: 1:4 unless noted			SHEET 1 OF 1