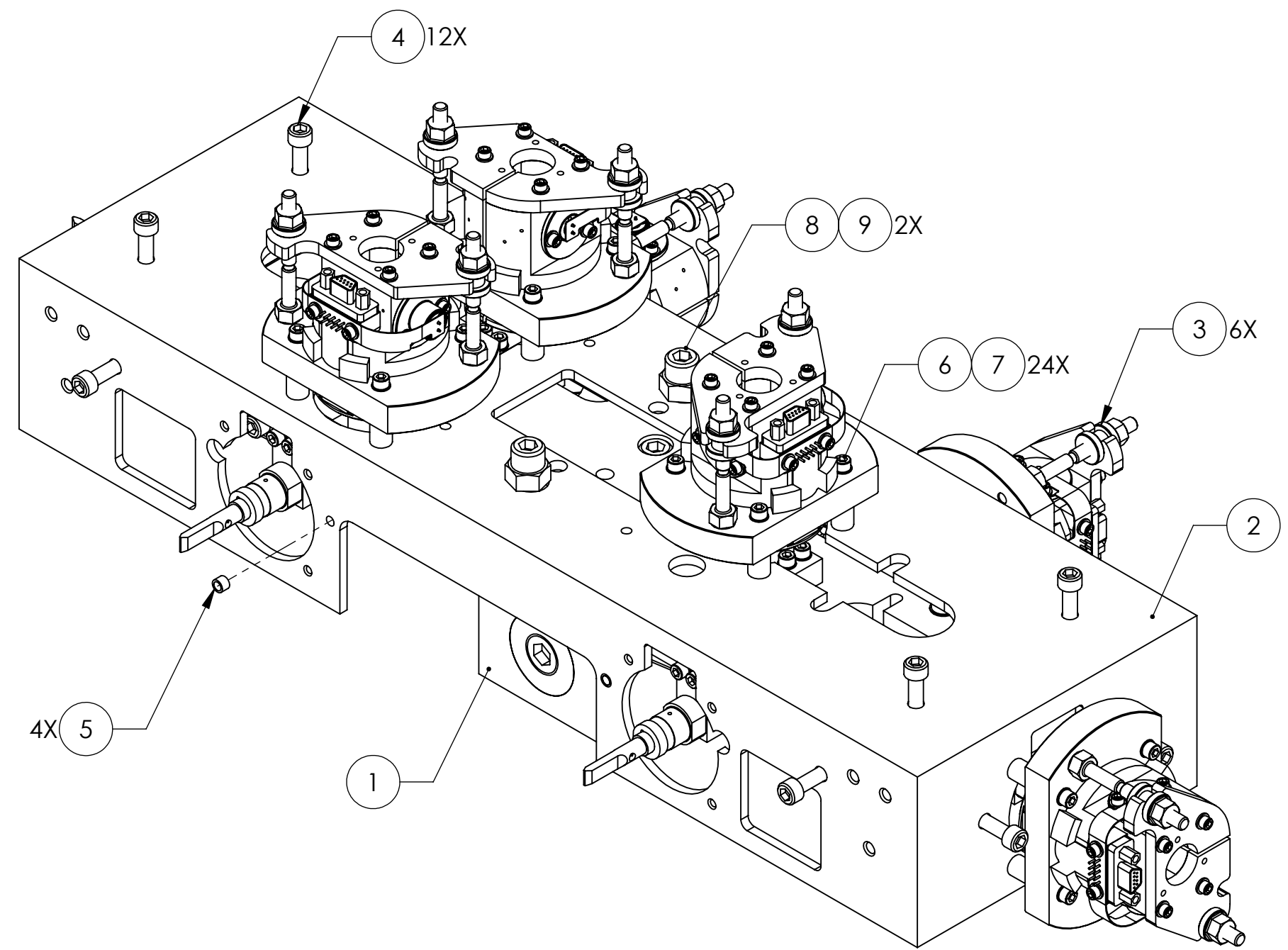


REV.	DATE	DCN #	DRAWING TREE #
A	28 JUN 2004	E040303-00	-
v1	01 JUN 2010	E0900501	E0900353
v2	20 JUN 2011	E1100590	E0900353



ITEM NO.	PART NUMBER	DESCRIPTION	MATERIAL	REQ	SPARE	TOTAL
9	-	HEX NUT, 1/4-20	300 SSSL	2	1	3
8	-	SCREW, SOCKET HEAD CAP, 1/4-20 UNC-2A X 1.25 LONG	Ag-PLATED 300 SSSL	2	1	3
7	-	WASHER, FLAT, #4 (NAS 620-C4L OR EQUIVALENT)	300 SSSL	24	6	30
6	-	SCREW, SOCKET HEAD CAP, #4-40 UNC-2A X 1 LONG	Ag-PLATED 300 SSSL	24	6	30
5	1185-04EN112	HELICOIL, #4-40 X 0.112 LONG	NITRONIC 60	4	1	5
4	D030025	SCREW, SOCKET HEAD CAP, #8-32 UNC-3A X 1 LONG, FULLY THREADED, ROUNDED END	Ag-PLATED 300 SSSL	12	3	15
3	D060218	BIRMINGHAM OSEM ASSY	-	6	-	6
2	D020239	HSTS COILHOLDER (TABLECLOTH)	304, 316 OR 302 SSSL	1	-	1
1	D020534	UPPER MASS ASSEMBLY	N/A	1	-	1
PARTS LIST						

CALIFORNIA INSTITUTE OF TECHNOLOGY MASSACHUSETTS INSTITUTE OF TECHNOLOGY		PART NAME UPPER MASS AND COIL HOLDER ASSEMBLY				
SYSTEM ADVANCED LIGO	SUB-SYSTEM SUS	DESIGNER C. TORRIE	28 JUN 2004	SIZE c	DWG. NO. D020535	REV. v2
NEXT ASSY D020700		DRAFTER B. MOORE	12 JUL 2012			
		CHECKER M. MEYER	30 OCT 2009	SCALE: NTS	PROJECTION:	SHEET 1 OF 1
		APPROVAL				