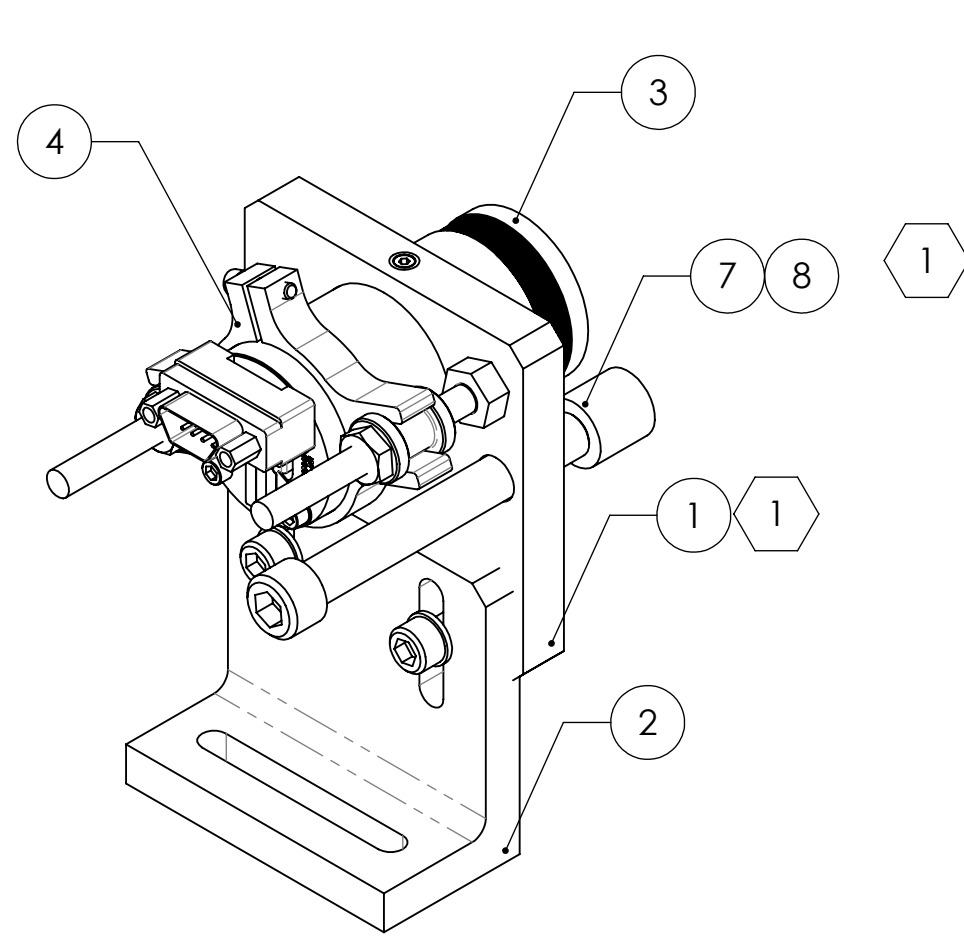


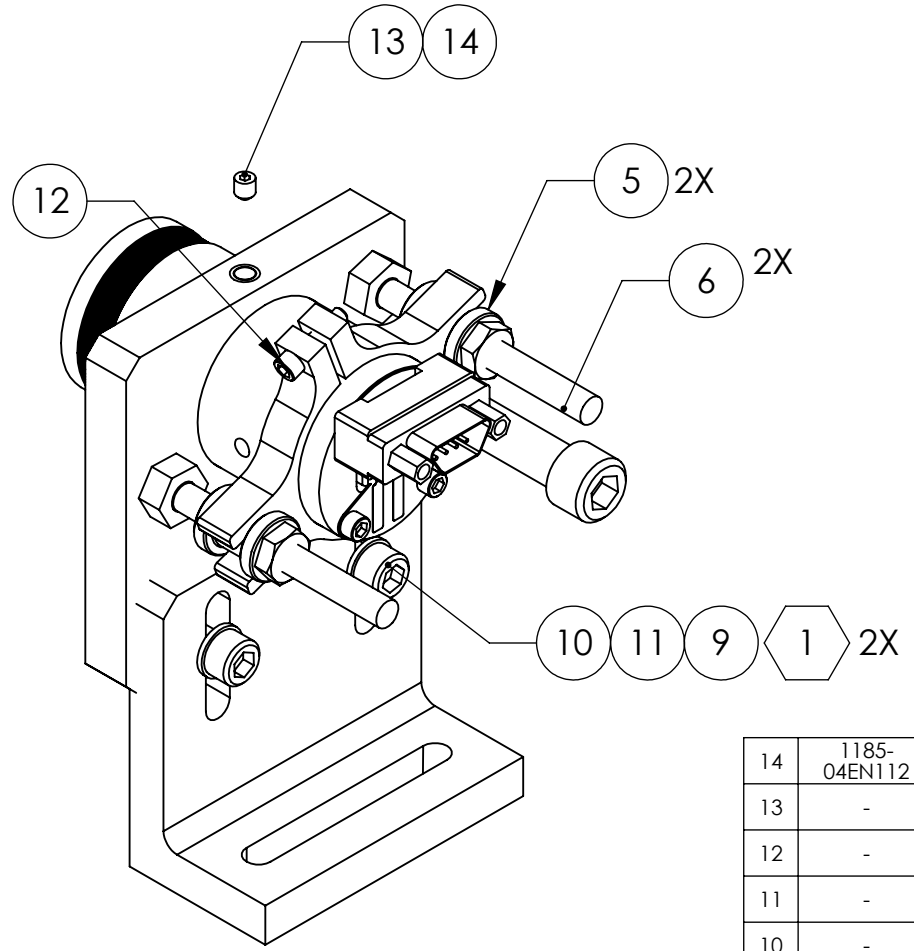
8 7 6 5 4 3 2 1

**NOTES:**  
 ① HELICOILS TO BE INSTALLED INTO ITEM NO. 1 BY LIGO PRIOR TO ASSEMBLY AND AFTER ALL PARTS ARE CLEANED AND BAKED.  
 ② RIGHT HAND CONFIGURATION IDENTICAL EXCEPT ITEM NO. 1 IS REVERSED IN ORDER TO KEEP EQ STOP AWAY FROM CHAMFERED EDGE OF MASS.

REV.	DATE	DCN #	DRAWING TREE #
v1	11 OCT 2010	-	E0900353
v2	01 JUN 2010	E0900505	E0900353
v3	20 JUN 2011	E1100590	E0900353



② LEFT HAND CONFIGURATION



REVERSE ISOMETRIC VIEW

ITEM NO.	PART NUMBER	DESCRIPTION	MATERIAL	REQ	SPARE	TOTAL
14	1185-04EN112	HELICOIL, #4-40 X 0.112 LONG	NITRONIC 60	1		1
13	-	SCREW, SOCKET SET, #4-40 UNC-2A X 0.125 LONG	300 SSSL	1		1
12	-	SCREW, SOCKET HEAD CAP, #2-56 UNC-2A X 0.375 LONG	300 SSSL	1	1	2
11	-	WASHER, FLAT, #8 (NAS 620-C8 OR EQUIVALENT)	300 SSSL	2	-	2
10	-	SCREW, SOCKET HEAD CAP, #8-32 UNC-2A X 0.625 LONG	300 SSSL	2	-	2
9	1185-2EN246	HELICOIL, #8-32 X 0.246 LONG	NITRONIC 60	2	1	3
8	1185-4EN250	HELICOIL, 1/4-20 X 0.25 LONG	NITRONIC 60	1	1	2
7	D0900932	EARTHQUAKE STOP FOR GLASS (GLASS TIP), SIMPLIFIED, 2 INCH	N/A	1	-	1
6	D1000659	ADJUSTER SHAFT	304, 316 OR 302 SSSL	2	1	3
5	D1000660	ADJUSTMENT NUT	PEEK	2	1	3
4	D0901548	AOSEM ADJUSTMENT COLLAR	6061-T6 Al	1	-	1
3	D0901065	AOSEM ASSEMBLY	-	1	-	1
2	D0902415	AOSEM ALIGNMENT BRACKET MOUNT	6061-T6 Al	1	-	1
1	D0902417	AOSEM ALIGNMENT BRACKET	6061-T6 Al	1	-	1

PARTS LIST						
CALIFORNIA INSTITUTE OF TECHNOLOGY MASSACHUSETTS INSTITUTE OF TECHNOLOGY		<b>PART NAME</b> LOWER AOSEM ALIGNMENT ASSY, BOTTOM MASS				
<b>SYSTEM</b> ADVANCED LIGO	<b>SUB-SYSTEM</b> SUS	<b>DESIGNER</b> W. RASCH	07 OCT 2009	<b>SIZE</b>	<b>DWG. NO.</b> B D0902208	<b>REV.</b> v3
<b>DRAFTER</b> B. MOORE	06 JUN 2012	<b>CHECKER</b> D. BRIDGES	06 JUN 2012	<b>SCALE:</b> 1:1	<b>PROJECTION:</b>	<b>SHEET 1 OF 1</b>
<b>NEXT ASSY</b> D020700						

D0902208\_AdvLIGO\_SUS\_HSTS\_Lower AOSEM Alignment Assembly, Test Mass, PART PDM REV: X-070, DRAWING PDM REV: X-019

8 7 6 5 4 3 2 1