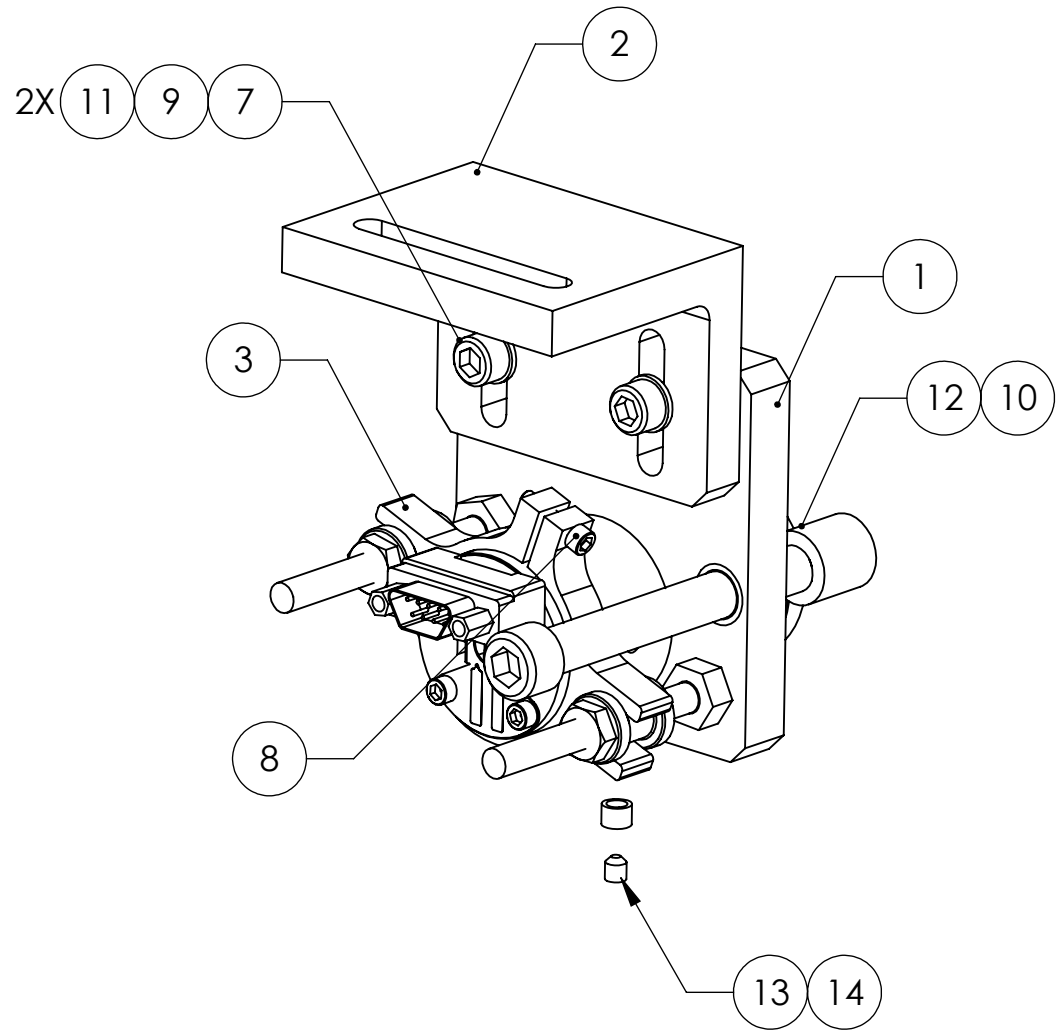


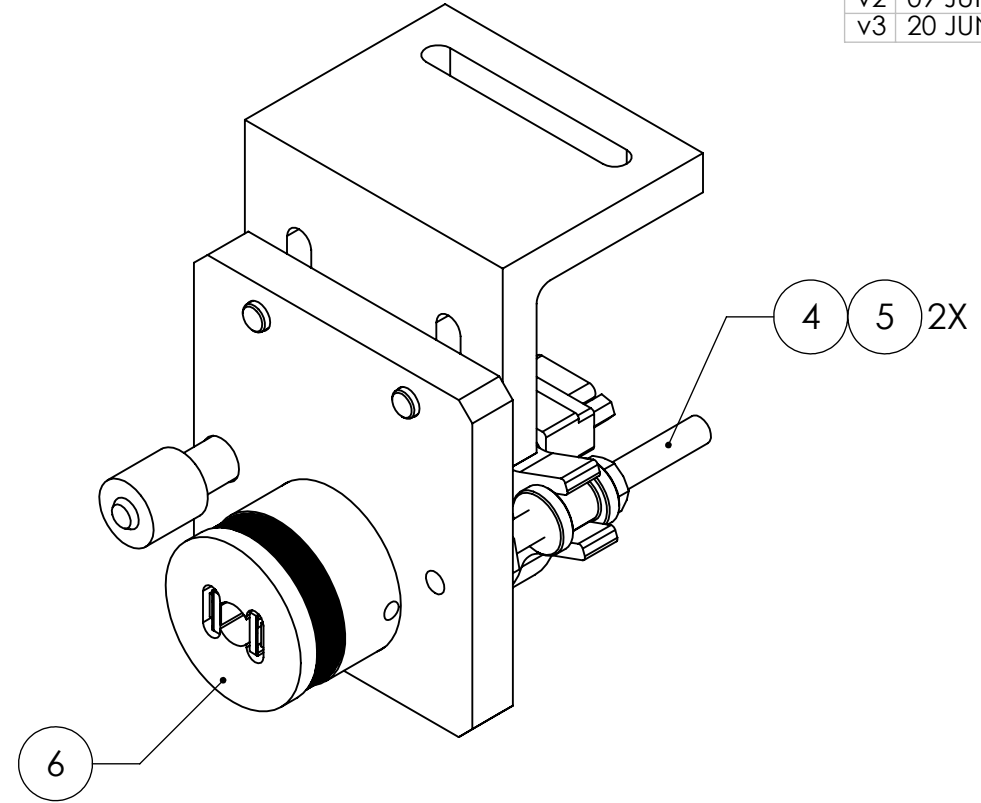
D0902207_AdvLIGO_SUS_HSTS_Upper AOSEM Alignment Assembly, Test Mass, PART PDM REV: X-059, DRAWING PDM REV: X-017

NOTES:
 ① HELICOILS TO BE INSTALLED INTO ITEM NO. 1 BY LIGO PRIOR TO ASSEMBLY AND AFTER ALL PARTS ARE CLEANED AND BAKED.
 ② RIGHT HAND CONFIGURATION IDENTICAL EXCEPT ITEM NO. 1 IS REVERSED IN ORDER TO KEEP EQ STOP AWAY FROM CHAMFERED EDGE OF MASS.

REV.	DATE	DCN #	DRAWING TREE #
v1	11 OCT 2009	-	E0900353
v2	09 JUN 2010	E0900505	E0900353
v3	20 JUN 2011	E1100590	E0900353



② LEFT HAND CONFIGURATION



REVERSE ISOMETRIC VIEW

14	1185-04EN112	HELICOIL, #4-40 X 0.112 LONG	NITRONIC 60	1		1
13	-	SCREW, SOCKET SET, #4-40 UNC-2A X 0.125 LONG	300 SSSL	1		1
12	D0900932	EARTHQUAKE STOP FOR GLASS (GLASS TIP), SIMPLIFIED, 2 INCH	N/A	1		1
11	1185-2EN246	HELICOIL, #8-32 X 0.246 LONG (1)	NITRONIC 60	2	1	3
10	1185-4EN250	HELICOIL, 1/4-20 X 0.25 LONG (1)	NITRONIC 60	1	1	2
9	-	WASHER, FLAT, #8 (NAS 620-C8 OR EQUIVALENT)	300 SSSL	2	-	2
8	-	SCREW, SOCKET HEAD CAP, #2-56 UNC-2A X 0.375 LONG	300 SSSL	1	-	1
7	-	SCREW, SOCKET HEAD CAP, #8-32 UNC-2A X 0.625 LONG	300 SSSL	2	-	2
6	D0901065	AOSEM ASSEMBLY	N/A	1	-	1
5	D1000660	ADJUSTMENT NUT	PEEK	2	1	3
4	D1000659	ADJUSTER SHAFT	304, 316 OR 302 SSSL	2	-	2
3	D0901548	AOSEM ADJUSTMENT COLLAR	6061-T6 Al	1	-	1
2	D0902416	AOSEM ALIGNMENT BRACKET MOUNT, INT. MASS	6061-T6 Al	1	-	1
1	D0902417	AOSEM ALIGNMENT BRACKET (1)	6061-T6 Al	1	-	1

ITEM NO.	PART NUMBER	DESCRIPTION	MATERIAL	REQ	SPARE	TOTAL
PARTS LIST						
CALIFORNIA INSTITUTE OF TECHNOLOGY MASSACHUSETTS INSTITUTE OF TECHNOLOGY		PART NAME UPPER AOSEM ALIGNMENT ASSY, BOTTOM MASS				
SYSTEM ADVANCED LIGO		SUB-SYSTEM SUS		DESIGNER B. MOORE	DATE 19 SEP 2009	SIZE DWG. NO. B D0902207
DRAFTER B. MOORE		CHECKER D. BRIDGES		DATE 06 JUN 2012	DATE 06 JUN 2012	REV. v3
CHECKER D. BRIDGES		APPROVAL		SCALE: 1:1		PROJECTION:
NEXT ASSY D020700		SHEET 1 OF 1				