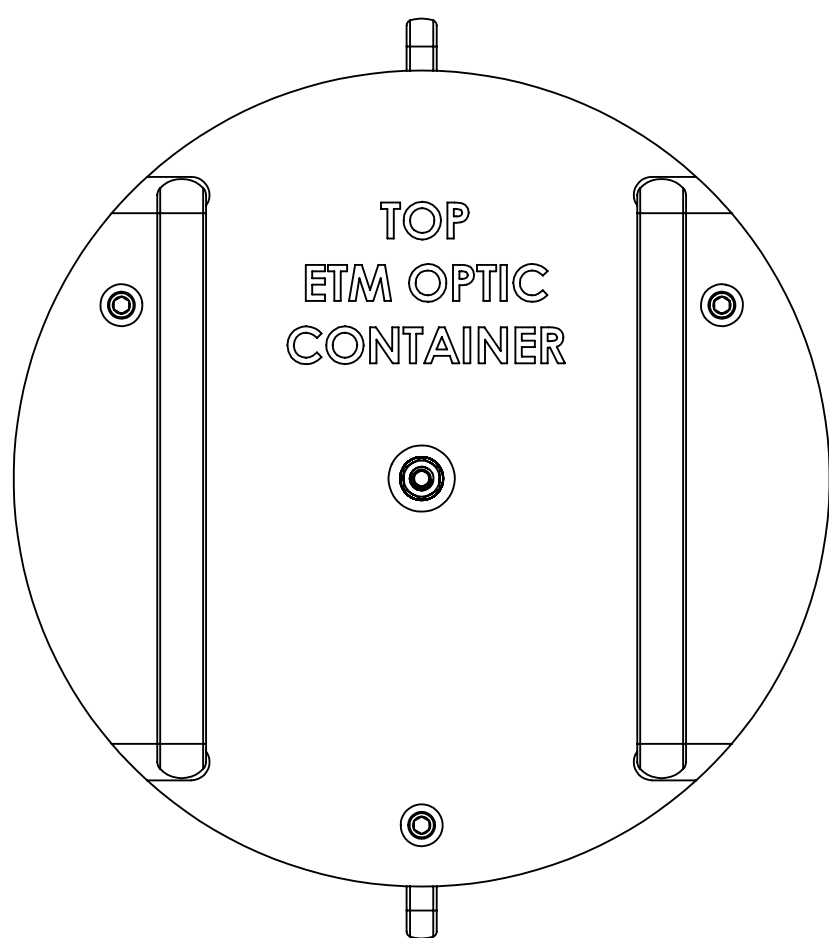
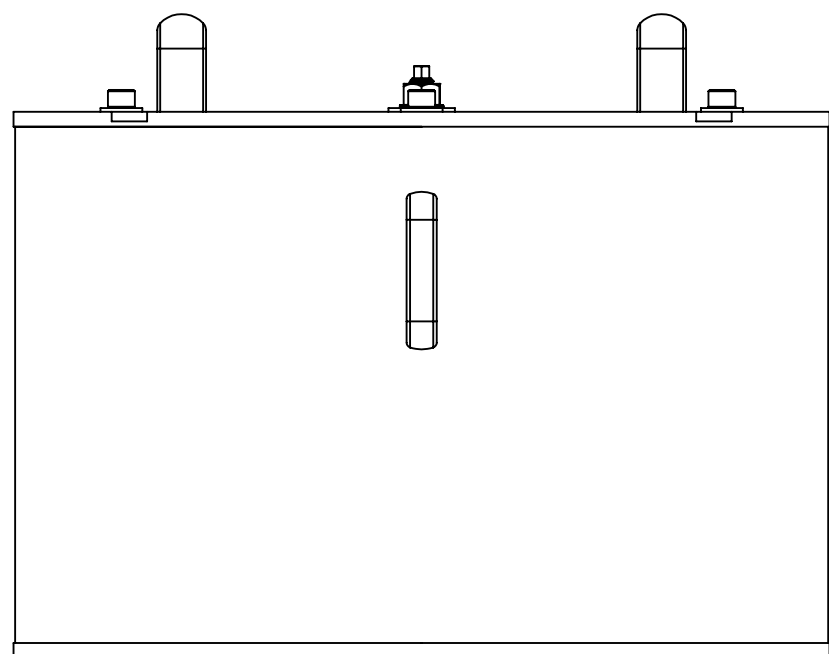


NOTES CONTINUED:
 ⑤ SCRIBE, ENGRAVE, OR MECHANICALLY STAMP (NO INKS OR DYES) DRAWING PART NUMBER, REVISION (AND VARIANT OR "TYPE" IF APPLICABLE) ON NOTED SURFACE OF PART FOLLOWED ON THE NEXT LINE WITH A THREE DIGIT SERIAL NUMBER. SERIAL NUMBERS START AT 001 FOR THE FIRST ARTICLE AND PROCEED CONSECUTIVELY. USE MINIMUM 0.12" HIGH CHARACTERS, UNLESS THE SIZE OF THE PART DICTATES SMALLER CHARACTERS. A VIBRATORY TOOL MAY BE USED. EXAMPLE: DXXXXXX-VY, TYPE-XX, S/N XXX



REV.	DATE	DCN #	DRAWING TREE #
v1	21 OCT 2009	E0900367	
v2	13 NOV 2009	E0900412	
v3	29 APR 2010	E1000141	

ALT	DESCRIPTION	QTY	MATERIAL	REQ	SPARE	TOTAL
ALT	D0902523-4 OVERSIZE LOCATING SLEEVE, ETM, COC CONTAINER	1	PFA440HP	1		1
ALT	D0902523-3 OVERSIZE LOCATING SLEEVE, ETM, COC CONTAINER	1	PFA440HP	1		1
ALT	D0902523-2 OVERSIZE LOCATING SLEEVE, ETM, COC CONTAINER	1	PFA440HP	1		1
ALT	D0902523-1 OVERSIZE LOCATING SLEEVE, ETM, COC CONTAINER	1	PFA440HP	1		1
ALT	D0902495 GUIDE, OPTIC, COC CONTAINER	3	PFA440HP	3		3
30	AS568A-453 O-RING	2	VITON	2		2
29	ROW Inc. O-Ring, Base FM, .188 Thick X 1.6375 ID	2	PFA Encapsulat ed Viton	2		2
28	D0902536 PULL HANDLE, MODIFIED MC #1897A49	2	6061-T6 Al	2		2
27	D0902490 COVER, CENTRYCO CC-22-025-0050-013-DAE	1	301 SSSL	1		1
26	D0902348 Plate, Adjustable, ETM Optic Container	2	303 SS	2		2
25	D0902331 RETAINER FOR CENTRYCO COVER	1	304 SSSL	1		1
24	D0902330 PILOT FOR CENTRYCO COVER	1	304 SSSL	1		1
23	D0902246 TOP PLATE, ETM, COC OPTIC CONTAINER	1	6061-T6 Al	1		1
22	D0902152 SHIPPING SLEEVE, ETM, COC CONTAINER	3	6061-T6 Al	3		3
21	D0902151 OUTER SLEEVE, ETM, COC CONTAINER	1	304 SSSL	1		1
20	D0902150 LOCATING SLEEVE, ETM, COC CONTAINER	3	PFA440 HP (PRESHRUNK)	3		3
19	D0902149 LOCATING SHAFT, ETM, COC CONTAINER	3	304 SSSL	3		3
18	D0902148 WEDGE PLATE, ETM, COC OPTIC CONTAINER	1	6061-T6 Al	1		1
17	D0902147 BASE PLATE, ETM, COC OPTIC CONTAINER	1	6061-T6 Al	1		1
16	D0902028 THRUST PAD, WEDGE PLATE CLAMP, COC CONTAINER	1	17-4 PH SS	1		1
15	D0902027 PULL HANDLE, 337LB LOAD RATED	2	6061-T6 Al	2		2
14	D0902026 CLAMP, WEDGE PLATE, COC CONTAINER	1	300 SSSL	1		1
13	D0901316 Block, Spring Loaded, Adjustable, ETM Optic Container	2	PFA 440 HP	2		2
12	C-606-N SCREW, SHC, 6-32 x 3/8, (UC Comp #C-606-N)	4	300 SSSL	4		4
11	C-2024-N Screw, Soc Hd Cap, 1/4-20 x 1.50 (UC Comp #C-2024-N)	4	18-8 SS	4		4
10	98449A033 WASHER, LOCK, INT TOOTH 1/2", ASME B18.21.1 MC #98449A033	1	410 SSSL	1		1
9	98019A510 WASHER, FLAT, 1/2, MS15795-819, MC #98019A510	1	18-8 SSSL	1		1
8	98019A399 WASHER, FLAT, 3/8, MS15795-814, MC #98019A399	3	18-8 SSSL	3		3
7	92200A682 SCREW, SHC, 3/8-16 x 1 1/4, MS16995-82, MC #92200A682	3	18-8 SSSL	3		3
6	92200A630 SCREW, SHC, 5/16-18 x 1, MS16995-66, MC #92200A630	4	18-8 SSSL	4		4
5	92200A340 SCREW, SHC, 10-32 x 3/8, MS16995-9, MC #92200A340	4	18-8 SSSL	4		4
4	92200A144 SCREW, SHC, 6-32 x 1/4, MS16995-16, MC#92200A144	4	300 SSSL	4		4
3	90762A139 1/2 HEX NUT, MS51972-5, MC #90762A139	1	300 SSSL	1		1
2	1986K1 Spring, Compressed, Closed end, 5/32 OD x .016 x 1.00	2	Stainless Steel	2		2
1	1726A7 PULL HANDLE, MC #1726A7	2	304 SSSL	2		2

ITEM NO.	PART NUMBER	DESCRIPTION	MATERIAL	REQ	SPARE	TOTAL
PARTS LIST						

NOTES AND TOLERANCES: (UNLESS OTHERWISE SPECIFIED)

1. INTERPRET DRAWING PER ASME Y14.5-1994.
2. REMOVE ALL SHARP EDGES, R.02 MIN.
3. DO NOT SCALE FROM DRAWING.
4. ALL MACHINING FLUIDS MUST BE FULLY SYNTHETIC, FULLY WATER SOLUBLE AND FREE OF SULFUR, SILICONE, AND CHLORINE.

MATERIAL	N/A	FINISH	N/A μinch
-----------------	-----	---------------	-----------

LIGO CALIFORNIA INSTITUTE OF TECHNOLOGY
 MASSACHUSETTS INSTITUTE OF TECHNOLOGY

SYSTEM: **ADVANCED LIGO** SUB-SYSTEM: **COC**

NEXT ASSY:

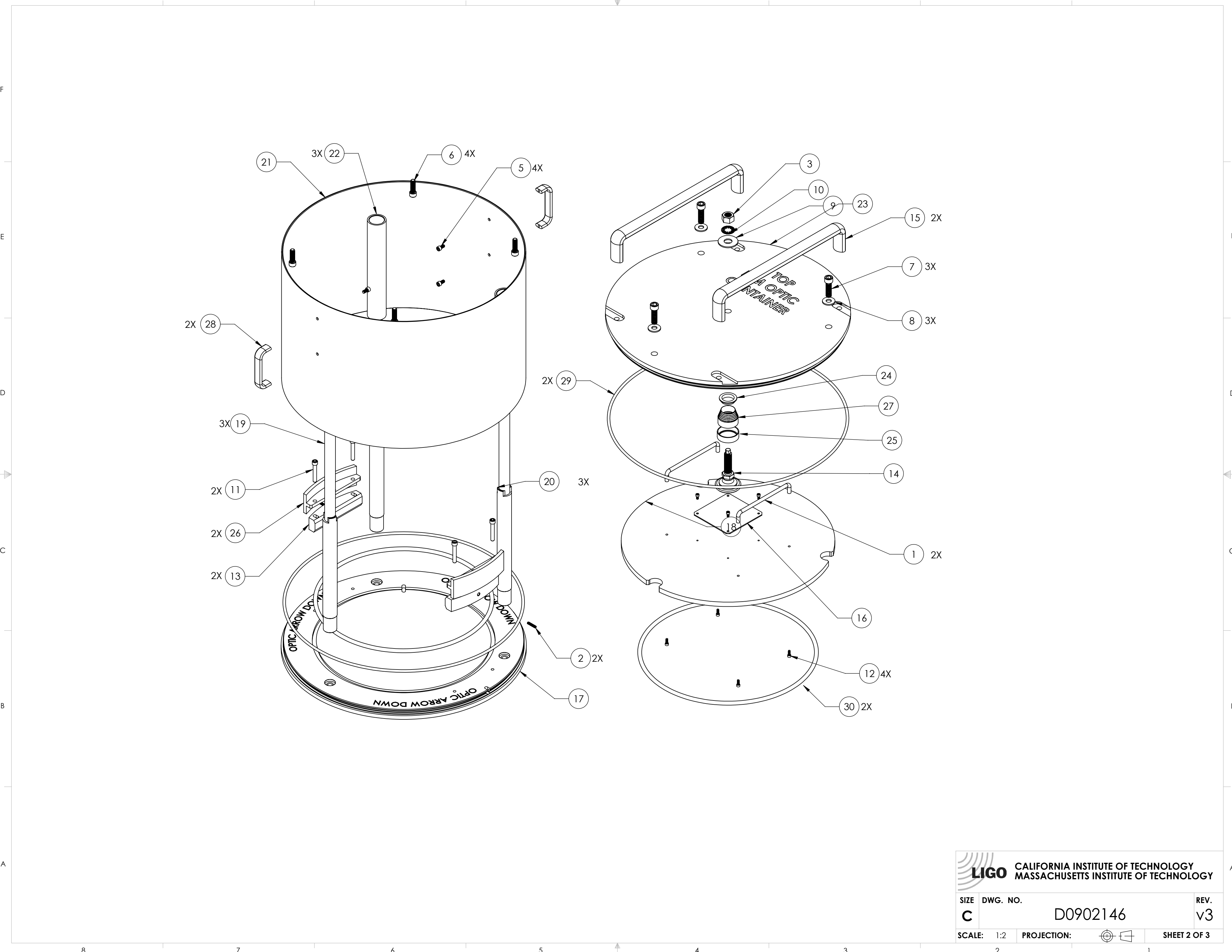
PART NAME: **ETM, COC CONTAINER ASSEMBLY**

DESIGNER	K. BUCKLAND	23 AUG 2009	SIZE	DWG. NO.	REV.
DRAFTER	K. BUCKLAND	29 SEPT 2009	c	D0902146	v3
CHECKER	K. MAILAND	21 OCT 2009			
APPROVAL	C. TORRIE	21 OCT 2009	SCALE: 1:4	PROJECTION:	SHEET 1 OF 3

DIMENSIONS ARE IN INCHES

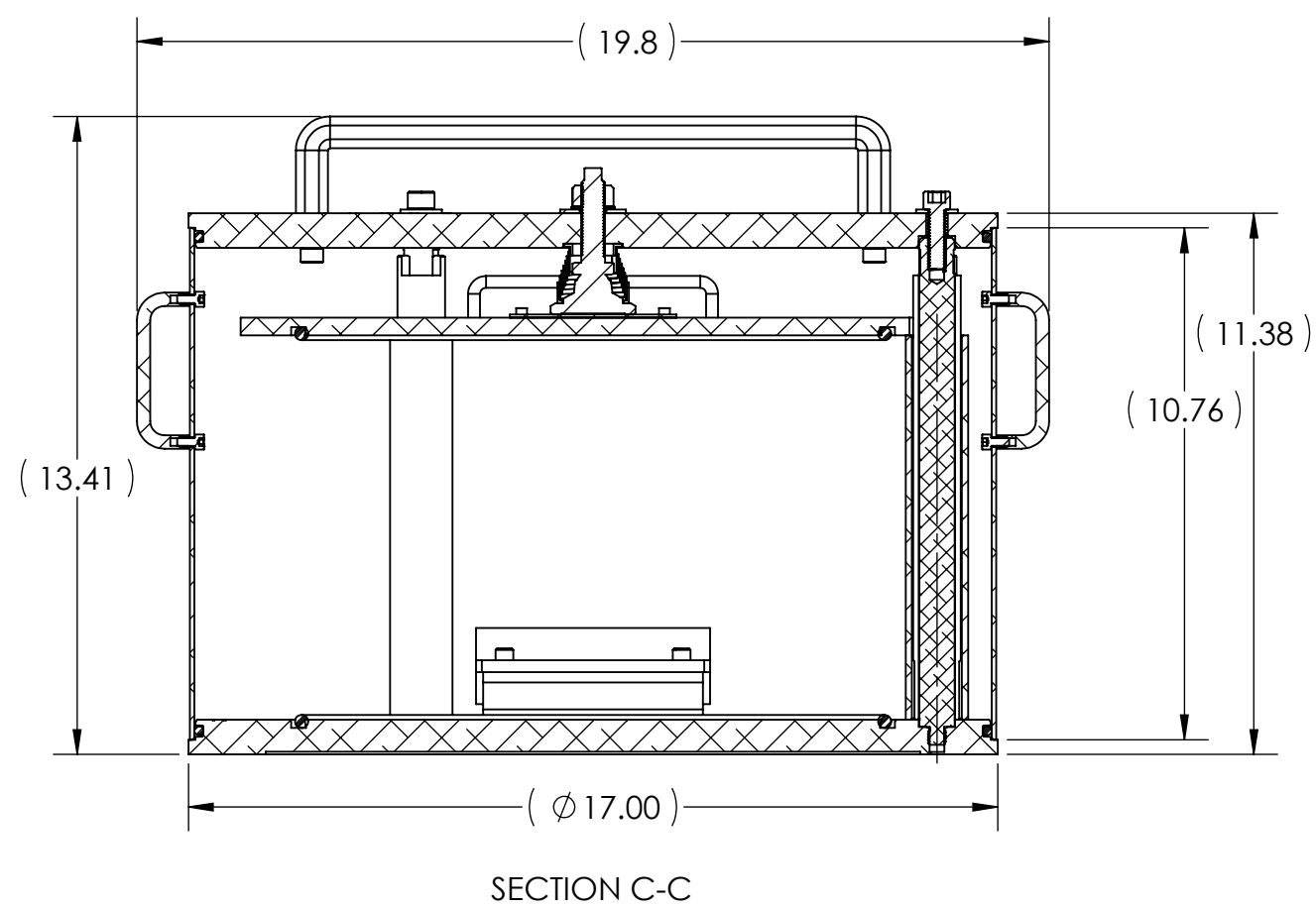
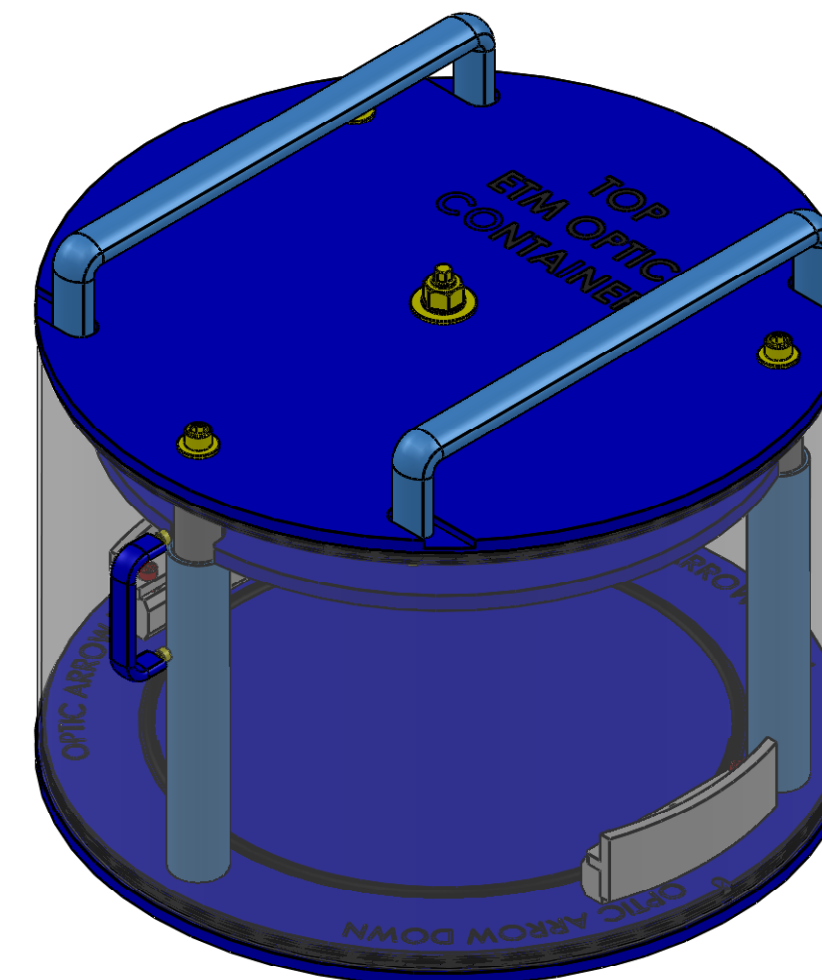
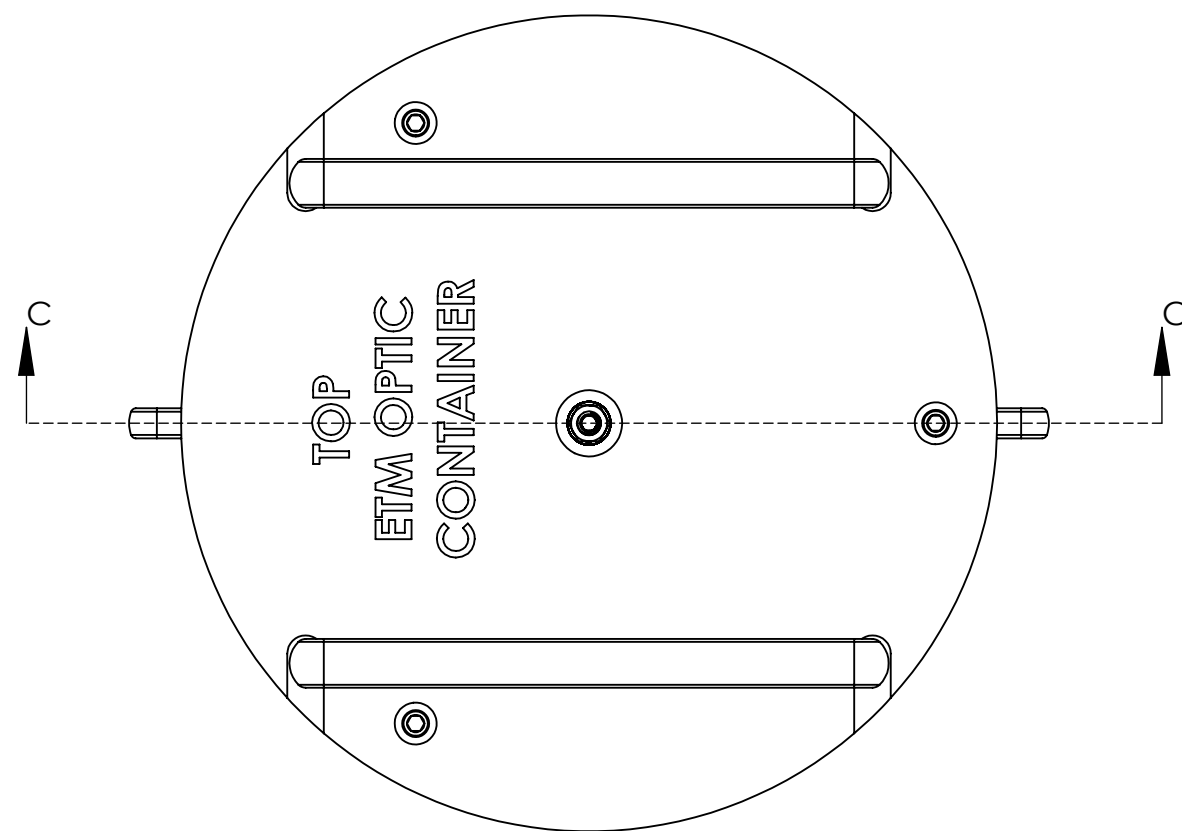
TOLERANCES:
 .XX ± .01
 .XXX ± .005

ANGULAR ± 0.5°



LIGO CALIFORNIA INSTITUTE OF TECHNOLOGY
 MASSACHUSETTS INSTITUTE OF TECHNOLOGY

SIZE C	DWG. NO. D0902146	REV. v3
SCALE: 1:2	PROJECTION:	SHEET 2 OF 3



 CALIFORNIA INSTITUTE OF TECHNOLOGY MASSACHUSETTS INSTITUTE OF TECHNOLOGY		
SIZE	DWG. NO.	REV.
C	D0902146	v3
SCALE: 1:4	PROJECTION:	 SHEET 3 OF 3