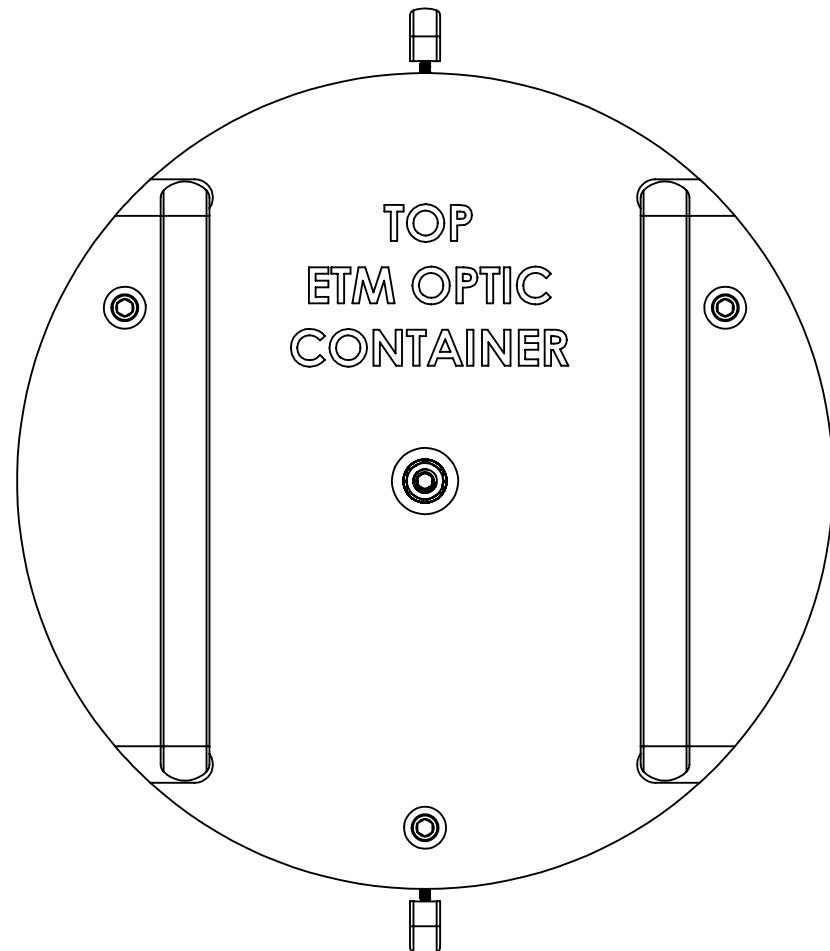
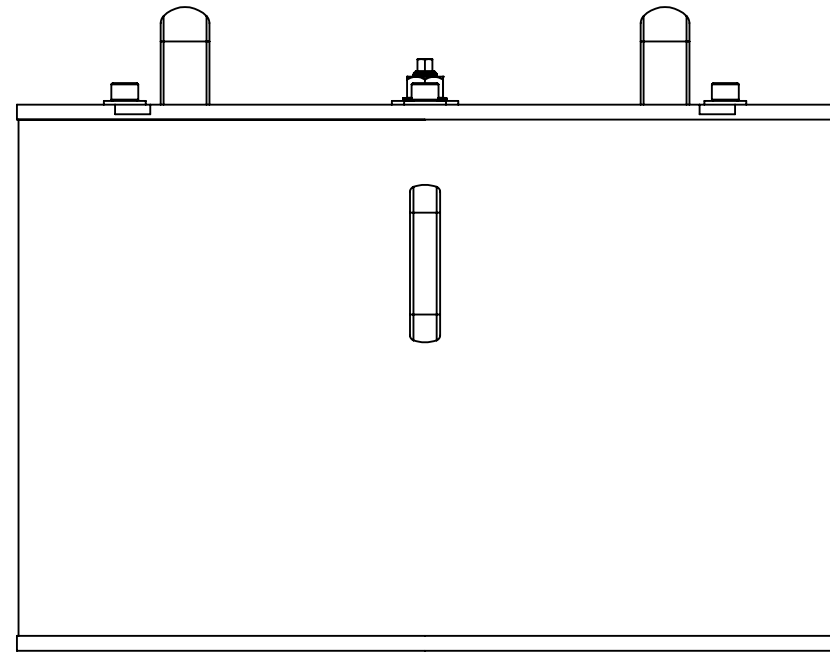


D0902146 ETM, COC CONTAINER, ADVANCED LIGO, PART PDM REV: X-008, DRAWING PDM REV: X-009

REV.	DATE	DCN #	DRAWING TREE #
v1	21 OCT 2009	E0900367	
v2	13 NOV 2009	E0900412	



ALT	D0902523-3	OVERSIZE LOCATING SLEEVE, ETM, COC CONTAINER	PFA440HP	1	1
ALT	D0902523-2	OVERSIZE LOCATING SLEEVE, ETM, COC CONTAINER	PFA440HP	1	1
ALT	D0902523-1	OVERSIZE LOCATING SLEEVE, ETM, COC CONTAINER	PFA440HP	1	1
ALT	D0902495	GUIDE, OPTIC, COC CONTAINER	PFA440HP	3	3
30	AS568A-453 O-RING	ROW INC. O-RING, .275" THICK X 11.975" ID, PFA Encapsulated Viton	VITON	2	2
29	ROW Inc.	O-Ring, Base FM, .188 Thick X 16.375 ID	PFA Encapsulated Viton	2	2
28	D0902536	PULL HANDLE, MODIFIED MC #1897A49	6061-T6 Al	2	2
27	D0902490	COVER, CENTRYCO CC-22-025-0050-013-DAE	301 SSSL	1	1
26	D0902348	Plate, Adjustable, ETM Optic Container	303 SS	2	2
25	D0902331	RETAINER FOR CENTRYO COVER	304 SSSL	1	1
24	D0902330	PILOT FOR CENTRYO COVER	304 SSSL	1	1
23	D0902246	TOP PLATE, ETM, COC OPTIC CONTAINER	6061-T6 Al	1	1
22	D0902152	SHIPPING SLEEVE, ETM, COC CONTAINER	6061-T6 Al	3	3
21	D0902151	OUTER SLEEVE, ETM, COC CONTAINER	304 SSSL	1	1
20	D0902150	LOCATING SLEEVE, ETM, COC CONTAINER	PFA440 HP (PRESHRUNK)	3	3
19	D0902149	LOCATING SHAFT, ETM, COC CONTAINER	304 SSSL	3	3
18	D0902148	WEDGE PLATE, ETM, COC OPTIC CONTAINER	6061-T6 Al	1	1
17	D0902147	BASE PLATE, ETM, COC OPTIC CONTAINER	6061-T6 Al	1	1
16	D0902028	THRUST PAD, WEDGE PLATE CLAMP, COC CONTAINER	17-4 PH SS	1	1
15	D0902027	PULL HANDLE, 337LB LOAD RATED	6061-T6 Al	2	2
14	D0902026	CLAMP, WEDGE PLATE, COC CONTAINER	300 SSSL	1	1
13	D0901316	Block, Spring Loaded, Adjustable, ETM Optic Container	PFA 440 HP	2	2
12	C-606-N	SCREW, SHC, 6-32 x 3/8, (UC Comp #C-606-N)	300 SSSL	4	4
11	C-2024-N	Screw, Soc Hd Cap, 1/4-20 x 1.50 (UC Comp #C-2024-N)	18-8 SS	4	4
10	98449A033	WASHER, LOCK, INT TOOTH 1/2", ASME B18.21.1 MC #98449A033	410 SSSL	1	1
9	98019A510	WASHER, FLAT, 1/2, MS15795-819, MC #98019A510	18-8 SSSL	1	1
8	98019A399	WASHER, FLAT, 3/8, MS15795-814, MC #98019A399	18-8 SSSL	3	3
7	92200A682	SCREW, SHC, 3/8-16 x 1 1/4, MS16995-82, MC #92200A682	18-8 SSSL	3	3
6	92200A630	SCREW, SHC, 5/16-18 x 1, MS16995-66, MC #92200A630	18-8 SSSL	4	4
5	92200A340	SCREW, SHC, 10-32 x 3/8, MS16995-9, MC #92200A340	18-8 SSSL	4	4
4	92200A144	SCREW, SHC, 6-32 x 1/4, MS16995-16, MC#92200A144	300 SSSL	4	4
3	90762A139	1/2 HEX NUT, MS51972-5, MC #90762A139	300 SSSL	1	1
2	1986K1	Spring, Compressed, Closed end, 5/32 OD x .016 x 1.00	Stainless Steel	2	2
1	1726A7	PULL HANDLE, MC #1726A7	304 SSSL	2	2

ITEM NO.	PART NUMBER	DESCRIPTION	MATERIAL	REQ	SPARE	TOTAL
----------	-------------	-------------	----------	-----	-------	-------

PARTS LIST

NOTES AND TOLERANCES: (UNLESS OTHERWISE SPECIFIED)

DIMENSIONS ARE IN INCHES

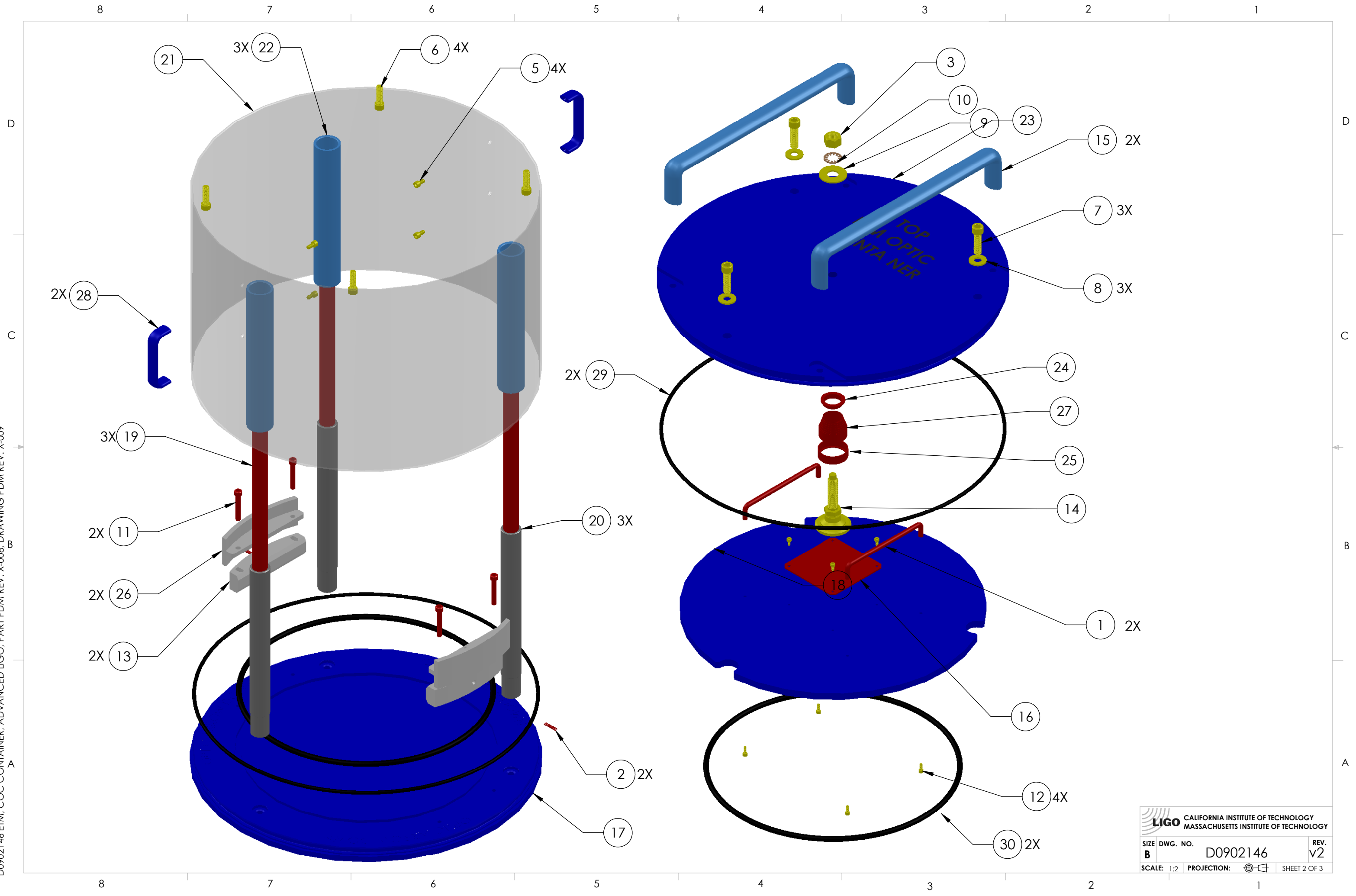
TOLERANCES:
 .XX ± .01
 .XXX ± .005
 ANGULAR ± 0.5°

1. INTERPRET DRAWING PER ASME Y14.5-1994.
 2. REMOVE ALL SHARP EDGES, R.02 MIN.
 3. DO NOT SCALE FROM DRAWING.
 4. ALL MACHINING FLUIDS MUST BE FULLY SYNTHETIC, FULLY WATER SOLUBLE AND FREE OF SULFUR, SILICONE, AND CHLORINE.

MATERIAL: N/A
 FINISH: N/A μinch

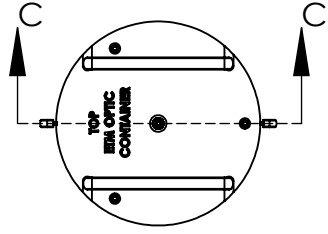
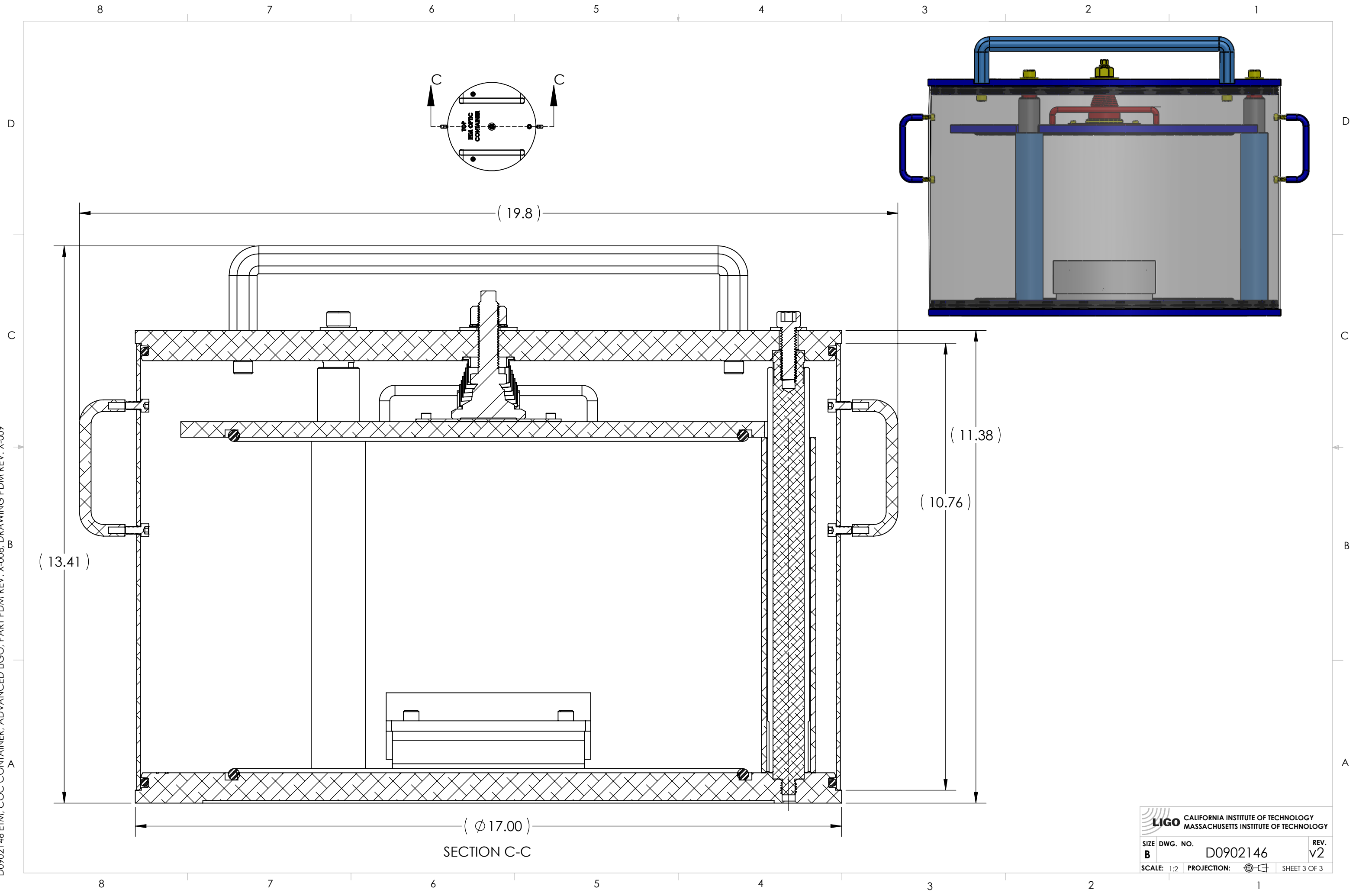
CALIFORNIA INSTITUTE OF TECHNOLOGY MASSACHUSETTS INSTITUTE OF TECHNOLOGY		PART NAME	
SYSTEM: ADVANCED LIGO SUB-SYSTEM: COC NEXT ASSY:		ETM, COC CONTAINER ASSEMBLY	
DESIGNER	K. BUCKLAND	23 AUG 2009	SIZE DWG. NO.
DRAFTER	K. BUCKLAND	29 SEPT 2009	B
CHECKER	K. MAILAND	21 OCT 2009	D0902146
APPROVAL	C. TORRIE	21 OCT 2009	REV. v2
SCALE: 1:4		PROJECTION:	
SHEET 1 OF 3			

D0902146 ETM, COC CONTAINER, ADVANCED LIGO, PART PDM REV: X-008, DRAWING PDM REV: X-009




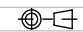
CALIFORNIA INSTITUTE OF TECHNOLOGY MASSACHUSETTS INSTITUTE OF TECHNOLOGY	
SIZE DWG. NO. B D0902146	REV. v2
SCALE: 1:2 PROJECTION:	SHEET 2 OF 3

D0902146 ETM, COC CONTAINER, ADVANCED LIGO, PART PDM REV: X-008, DRAWING PDM REV: X-009



SECTION C-C

 CALIFORNIA INSTITUTE OF TECHNOLOGY
 MASSACHUSETTS INSTITUTE OF TECHNOLOGY

SIZE	DWG. NO.	REV.
B	D0902146	v2
SCALE: 1:2		PROJECTION: 
		SHEET 3 OF 3