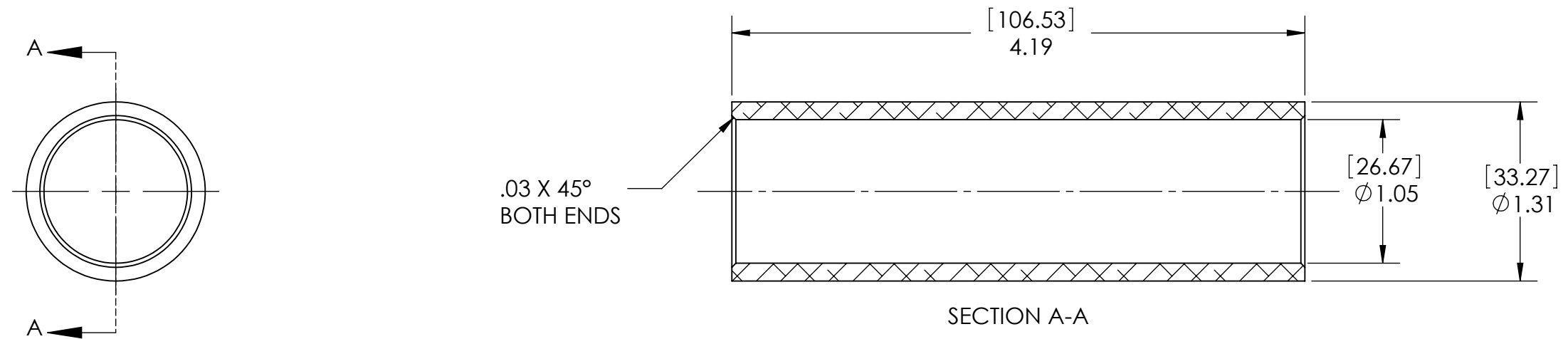


D0902145 SHIPPING SLEEVE, R OPTIC, COC CONTAINER, ADVANCED LIGO, PART PDM REV: X-001, DRAWING PDM REV: X-002

8 7 6 5 4 3 2 1

NOTES CONTINUED:
 ⑤ BAG ALL ITEMS AND MARK OR TAG EACH BAG WITH DRAWING NUMBER, REVISION, AND QUANTITY. EXAMPLE: DXXXXXX-VY, QTY: TBD
 ⑥ CAN BE MADE FROM MCMASTER #4481T113 TUBING

REV.	DATE	DCN #	DRAWING TREE #
v1	21 OCT 2009	E0900366	



NOTES AND TOLERANCES: (UNLESS OTHERWISE SPECIFIED) DIMENSIONS ARE IN INCHES [MM] TOLERANCES: .XX ± .01 .XXX ± .005 ANGULAR ± 0.5°		1. INTERPRET DRAWING PER ASME Y14.5-1994. 2. REMOVE ALL SHARP EDGES, R.02 MIN. 3. DO NOT SCALE FROM DRAWING. 4. ALL MACHINING FLUIDS MUST BE FULLY SYNTHETIC, FULLY WATER SOLUBLE AND FREE OF SULFUR, SILICONE, AND CHLORINE.		CALIFORNIA INSTITUTE OF TECHNOLOGY MASSACHUSETTS INSTITUTE OF TECHNOLOGY		PART NAME SHIPPING SLEEVE, R OPTIC, COC CONTAINER	
MATERIAL 6061-T6 Al		FINISH 63 μinch		SYSTEM ADVANCED LIGO		SUB-SYSTEM COC	
		NEXT ASSY D0902138		DESIGNER K. BUCKLAND 23 SEPT 2009		SIZE DWG. NO. B D0902145	
				DRAFTER K. BUCKLAND 23 SEPT 2009		REV. v1	
				CHECKER K. MAILAND 21 OCT 2009		SCALE: 1:1 PROJECTION: SHEET 1 OF 1	
				APPROVAL C. TORRIE 21 OCT 2009			

8 7 6 5 4 3 2 1