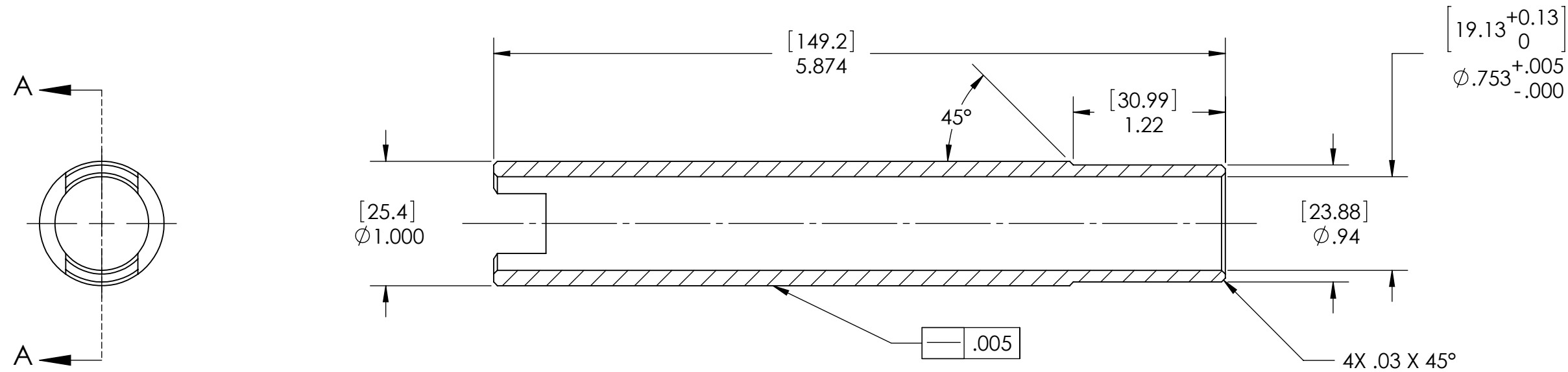


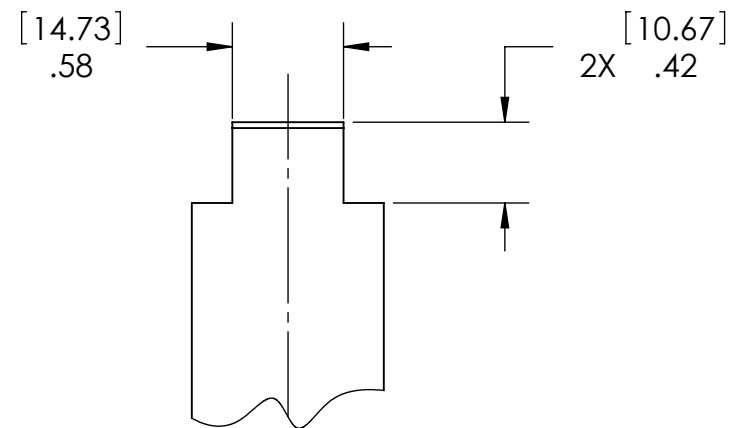
D0902143 LOCATING SLEEVE, R OPTIC, COC CONTAINER, ADVANCED LIGO, PART PDM REV: X-005, DRAWING PDM REV: X-006

**NOTES CONTINUED:**  
 ⑤ SCRIBE, ENGRAVE, OR MECHANICALLY STAMP (NO DYES OR INKS) A UNIQUE THREE DIGIT SERIAL NUMBER & REVISION NUMBER ON EACH PART. SERIAL NUMBERS START AT 001 FOR THE FIRST ARTICLE AND PROCEED CONSECUTIVELY. BAG AND TAG PARTS WITH THEIR DRAWING PART NUMBER, REVISION, VARIANT OR "TYPE" (IF APPLICABLE), AND QUANTITY. IF PARTS ARE TOO SMALL TO SCRIBE, BAGGING AND TAGGING ALONE IS SUFFICIENT.  
 EXAMPLE (PART): 001-v1  
 EXAMPLE (TAG): DXXXXXX-VY, TYPE-XX, QTY: TBD

REV.	DATE	DCN #	DRAWING TREE #
v1	21 OCT 2009	E0900366	
v2	29 APR 2010	E1000141	



SECTION A-A



**NOTES AND TOLERANCES: (UNLESS OTHERWISE SPECIFIED)**

DIMENSIONS ARE IN INCHES [MM]  
 TOLERANCES:  
 .XX ± .01  
 .XXX ± .005  
 ANGULAR ± 0.5°

1. INTERPRET DRAWING PER ASME Y14.5-1994.  
 2. REMOVE ALL SHARP EDGES, R.02 MIN.  
 3. DO NOT SCALE FROM DRAWING.  
 4. ALL MACHINING FLUIDS MUST BE FULLY SYNTHETIC, FULLY WATER SOLUBLE AND FREE OF SULFUR, SILICONE, AND CHLORINE.

**MATERIAL** PFA440 HP (PRESHRUNK) **FINISH** N/A μinch

**LIGO** CALIFORNIA INSTITUTE OF TECHNOLOGY  
 MASSACHUSETTS INSTITUTE OF TECHNOLOGY

**SYSTEM** ADVANCED LIGO **SUB-SYSTEM** COC

**NEXT ASSY** D0902138

**PART NAME** LOCATING SLEEVE, R OPTIC, COC CONTAINER

<b>DESIGNER</b> K. BUCKLAND	24 SEPT 2009	<b>SIZE</b> B	<b>DWG. NO.</b> D0902143	<b>REV.</b> v2
<b>DRAFTER</b> K. BUCKLAND	24 SEPT 2009			
<b>CHECKER</b>				
<b>APPROVAL</b>				

**SCALE:** 1:1 **PROJECTION:** **SHEET 1 OF 1**