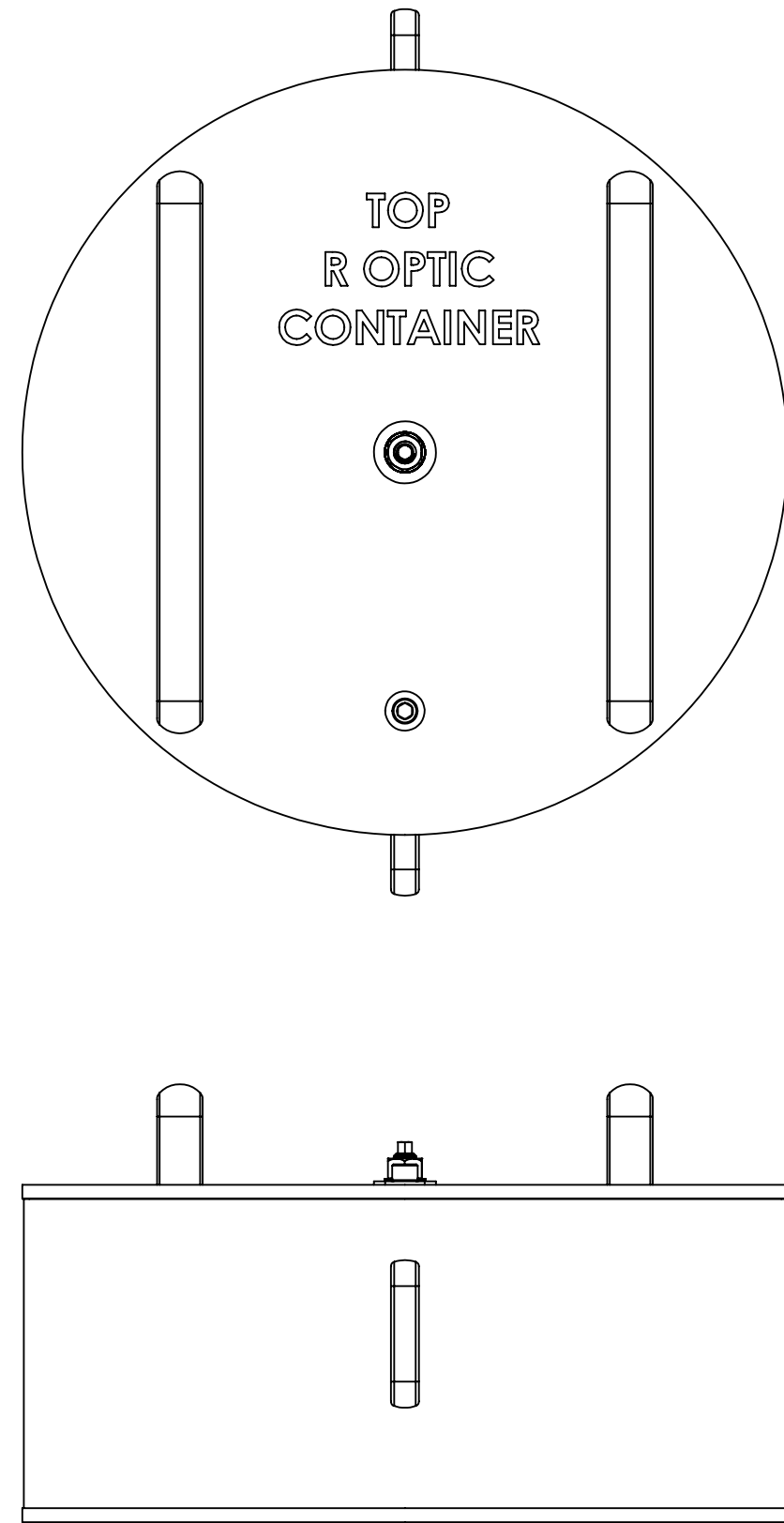


D0902138 R OPTIC, COC CONTAINER, ADVANCED LIGO, PART PDM REV: X-008, DRAWING PDM REV: X-010



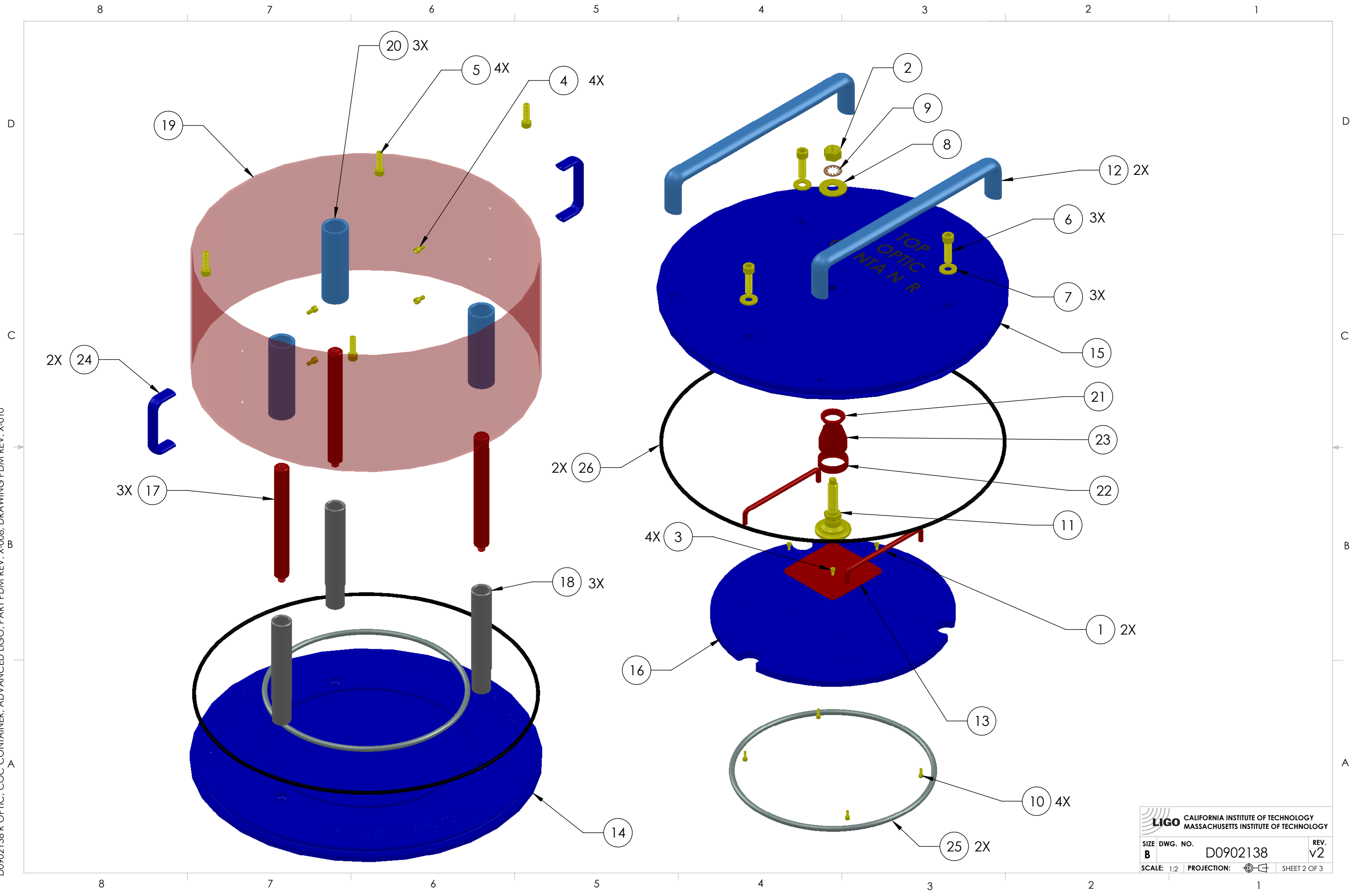
REV.	DATE	DCN #	DRAWING TREE #
v1	21 OCT 2009	E0900366	
v2	13 NOV 2009	E0900412	

ITEM NO.	PART NUMBER	DESCRIPTION	MATERIAL	REQ	SPARE	TOTAL
ALT	D0902522-3	OVERSIZE LOCATING SLEEVE, R OPTIC, COC CONTAINER	PFA440HP	1		1
ALT	D0902522-2	OVERSIZE LOCATING SLEEVE, R OPTIC, COC CONTAINER	PFA440HP	1		1
ALT	D0902522-1	OVERSIZE LOCATING SLEEVE, R OPTIC, COC CONTAINER	PFA440HP	1		1
ALT	D0902495	GUIDE, OPTIC, COC CONTAINER	PFA440HP	3		3
26	ROW Inc.	O-Ring, Base FM, .188 Thick X 16.375 ID	PFA Encapsulated Viton	2		2
25	ROW Inc.	O-Ring, Supporting Optic, SR, .275 Thick X 9.500 ID	PFA Encapsulated Viton	2		2
24	D0902536	PULL HANDLE, MODIFIED MC #1897A49	6061-T6 Al	2		2
23	D0902490	COVER, CENTRYCO CC-22-025-0050-013-DAE	301 SSSL	1		1
22	D0902331	RETAINER FOR CENTRYO COVER	304 SSSL	1		1
21	D0902330	PILOT FOR CENTRYO COVER	304 SSSL	1		1
20	D0902145	SHIPPING SLEEVE, R OPTIC, COC CONTAINER	6061-T6 Al	3		3
19	D0902144	OUTER SLEEVE, R OPTIC, COC CONTAINER	304 SSSL	1		1
18	D0902143	LOCATING SLEEVE, R OPTIC, COC CONTAINER	PFA440 HP (PRESHRUNK)	3		3
17	D0902142	LOCATING SHAFT, R OPTIC, COC CONTAINER	304 SSSL	3		3
16	D0902141	WEDGE PLATE, R OPTIC, COC OPTIC CONTAINER	6061-T6 Al	1		1
15	D0902140	TOP PLATE, R OPTIC, COC OPTIC CONTAINER	6061-T6 Al	1		1
14	D0902139	BASE PLATE, R OPTIC, COC OPTIC CONTAINER	6061-T6 Al	1		1
13	D0902028	THRUST PAD, WEDGE PLATE CLAMP, COC CONTAINER	17-4 PH SS	1		1
12	D0902027	PULL HANDLE, 337LB LOAD RATED	6061-T6 Al	2		2
11	D0902026	CLAMP, WEDGE PLATE, COC CONTAINER	300 SSSL	1		1
10	C-606-N	SCREW, SHC, 6-32 x 3/8, (UC Comp #C-606-N)	300 SSSL	4		4
9	98449A033	WASHER, LOCK, INT TOOTH 1/2", ASME B18.21.1 MC #98449A033	410 SSSL	1		1
8	98019A510	WASHER, FLAT, 1/2, MS15795-819, MC #98019A510	18-8 SSSL	1		1
7	98019A399	WASHER, FLAT, 3/8, MS15795-814, MC #98019A399	18-8 SSSL	3		3
6	92200A682	SCREW, SHC, 3/8-16 x 1 1/4, MS16995-82, MC #92200A682	18-8 SSSL	3		3
5	92200A630	SCREW, SHC, 5/16-18 x 1, MS16995-66, MC #92200A630	18-8 SSSL	4		4
4	92200A340	SCREW, SHC, 10-32 x 3/8, MS16995-9, MC #92200A340	18-8 SSSL	4		4
3	92200A144	SCREW, SHC, 6-32 x 1/4, MS16995-16, MC#92200A144	300 SSSL	4		4
2	90762A139	1/2 HEX NUT, MS51972-5, MC #90762A139	300 SSSL	1		1
1	1726A7	PULL HANDLE, MC #1726A7	304 SSSL	2		2

PARTS LIST

<p>NOTES AND TOLERANCES: (UNLESS OTHERWISE SPECIFIED)</p> <p>1. INTERPRET DRAWING PER ASME Y14.5-1994. 2. REMOVE ALL SHARP EDGES, R.02 MIN. 3. DO NOT SCALE FROM DRAWING. 4. ALL MACHINING FLUIDS MUST BE FULLY SYNTHETIC, FULLY WATER SOLUBLE AND FREE OF SULFUR, SILICONE, AND CHLORINE.</p>		<p>LIGO CALIFORNIA INSTITUTE OF TECHNOLOGY MASSACHUSETTS INSTITUTE OF TECHNOLOGY</p>		<p>PART NAME R OPTIC, COC CONTAINER ASSEMBLY</p>	
<p>DIMENSIONS ARE IN INCHES</p> <p>TOLERANCES: .XX ± .01 .XXX ± .005</p> <p>ANGULAR ± 0.5°</p>		<p>SYSTEM ADVANCED LIGO</p>		<p>SUB-SYSTEM COC</p>	
<p>MATERIAL N/A</p>		<p>FINISH N/A μinch</p>		<p>DESIGNER K. BUCKLAND 23 AUG 2009 DRAFTER K. BUCKLAND 24 SEPT 2009 CHECKER K. MAILAND 21 OCT 2009 APPROVAL C. TORRIE 21 OCT 2009</p>	
		<p>SIZE DWG. NO. B D0902138</p>		<p>REV. v2</p>	
		<p>SCALE: 1:4</p>		<p>PROJECTION: </p>	
				<p>SHEET 1 OF 3</p>	

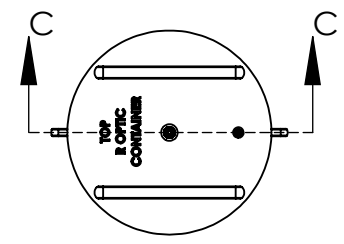
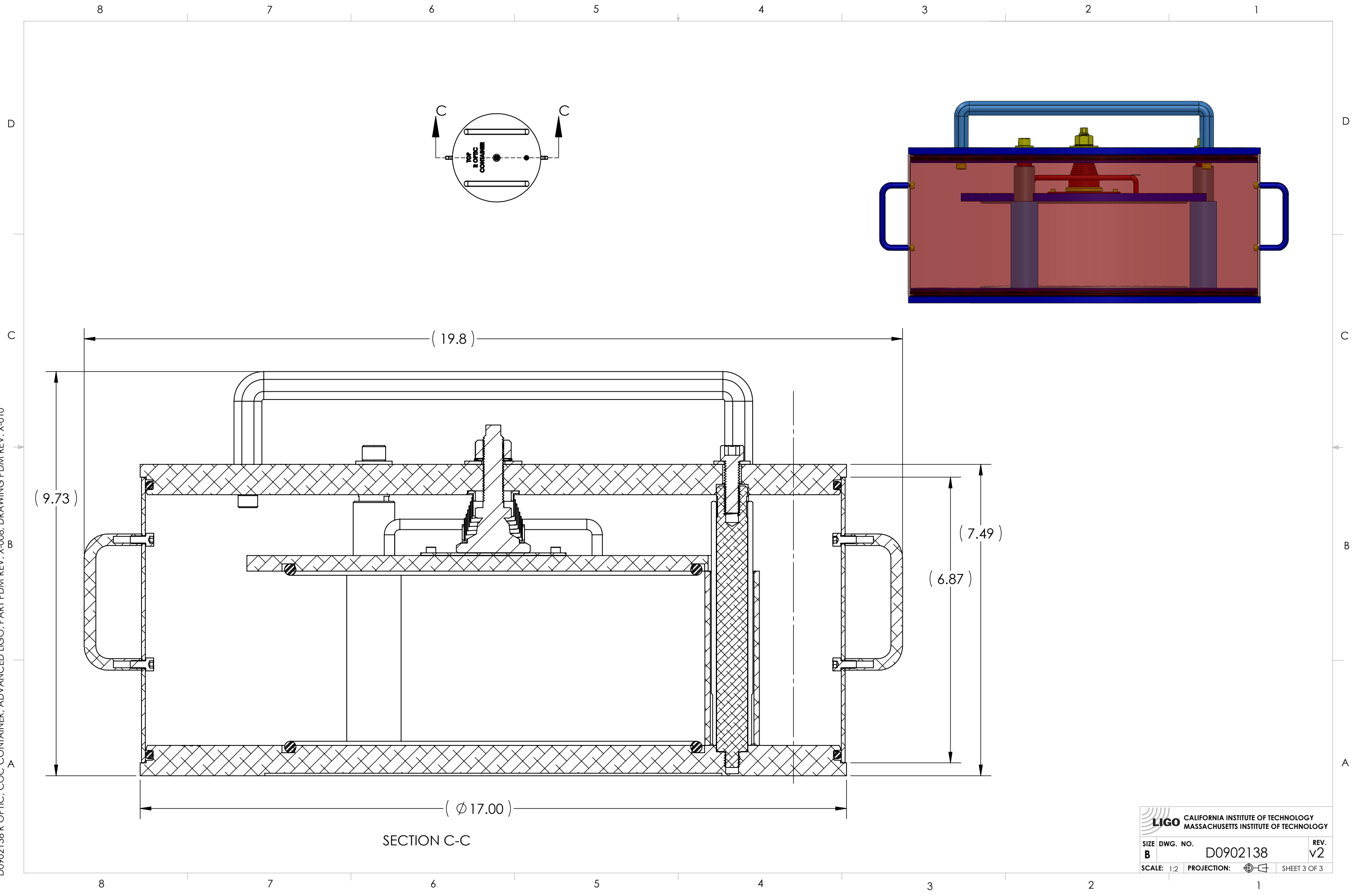
D0902138 R OPTIC, COC CONTAINER, ADVANCED LIGO, PART PDM REV: X-008, DRAWING PDM REV: X-010



LIGO CALIFORNIA INSTITUTE OF TECHNOLOGY
 MASSACHUSETTS INSTITUTE OF TECHNOLOGY

SIZE	DWG. NO.	REV.
B	D0902138	v2
SCALE: 1:2	PROJECTION:	SHEET 2 OF 3

D0902138 R OPTIC, COC CONTAINER, ADVANCED LIGO, PART PDM REV: X-008, DRAWING PDM REV: X-010



SECTION C-C

LIGO CALIFORNIA INSTITUTE OF TECHNOLOGY
 MASSACHUSETTS INSTITUTE OF TECHNOLOGY

SIZE	DWG. NO.	REV.
B	D0902138	v2
SCALE: 1:2	PROJECTION:	SHEET 3 OF 3