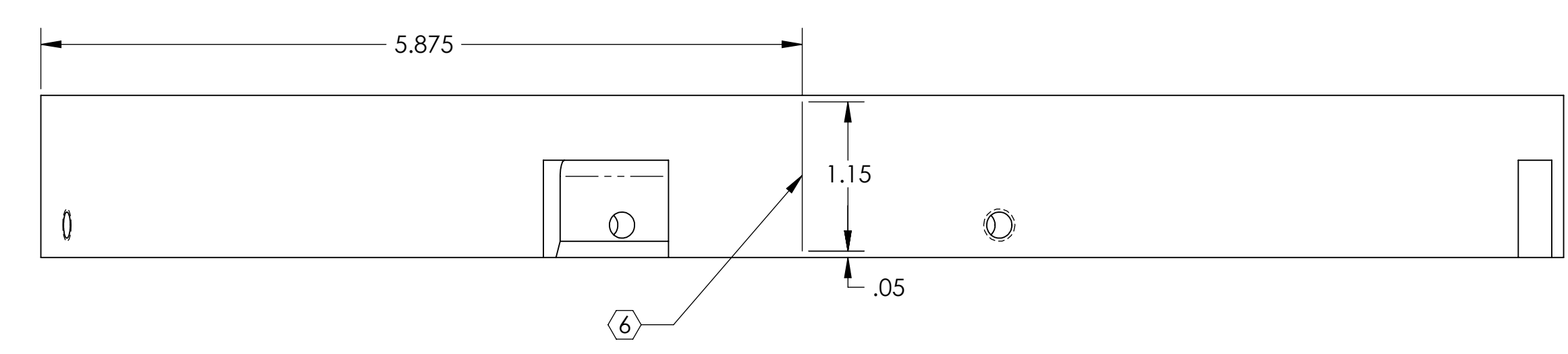
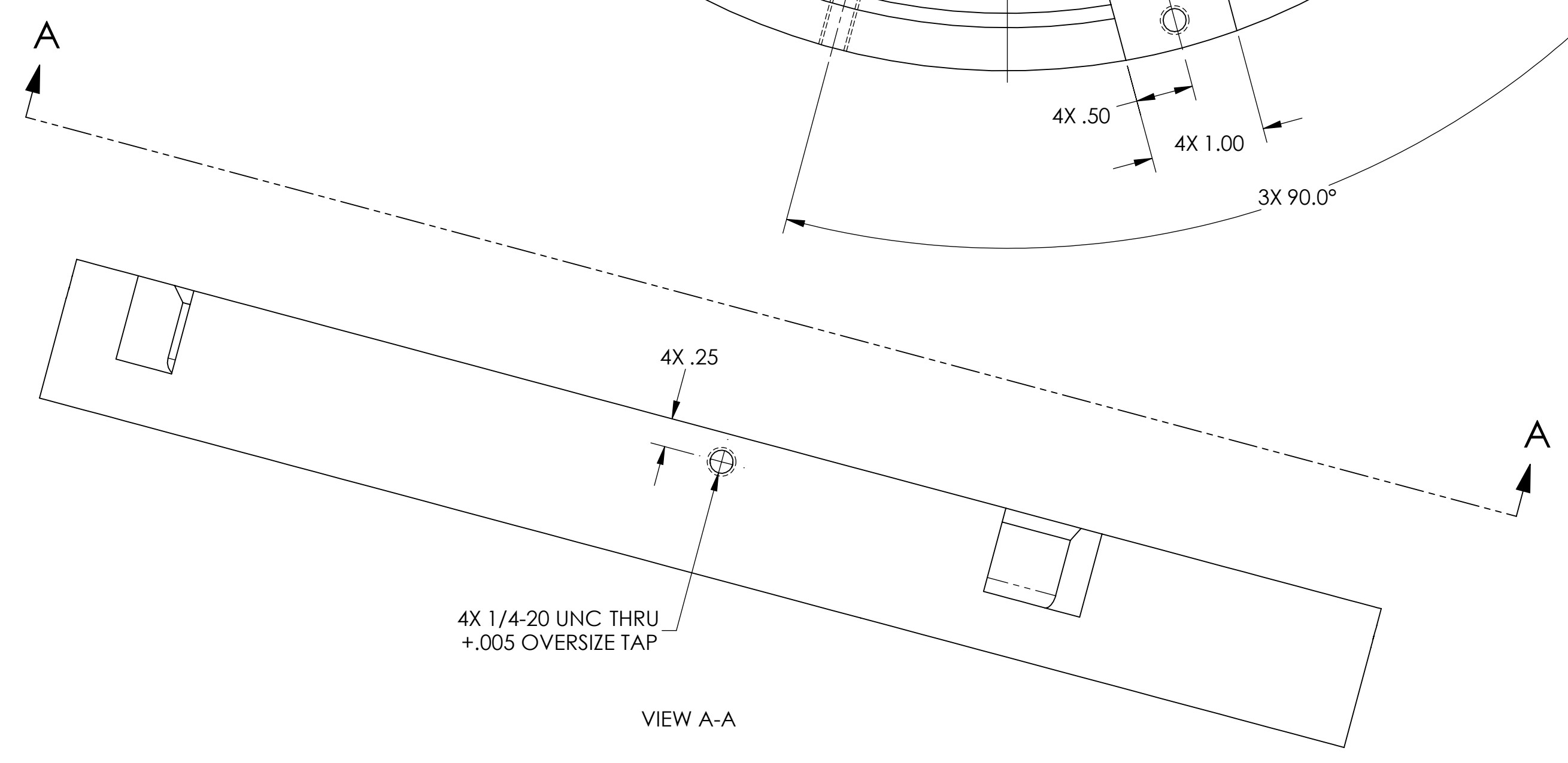
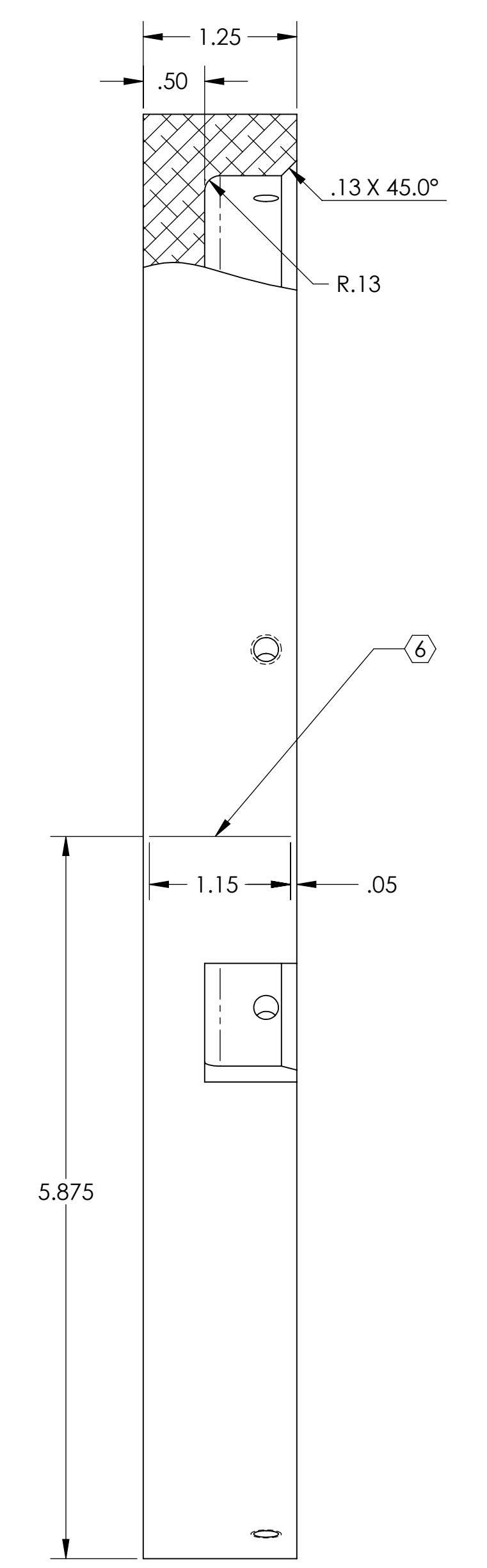
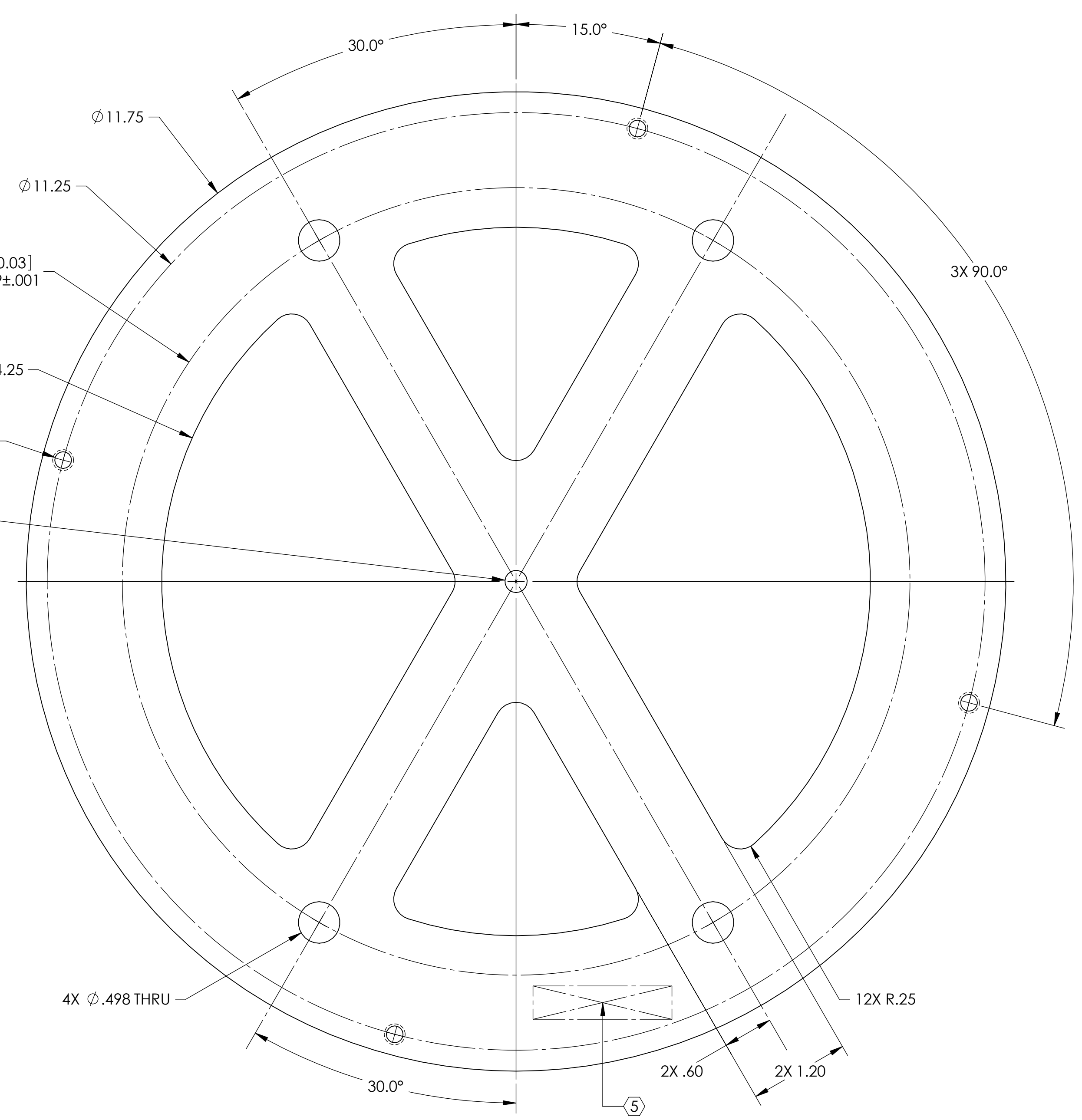
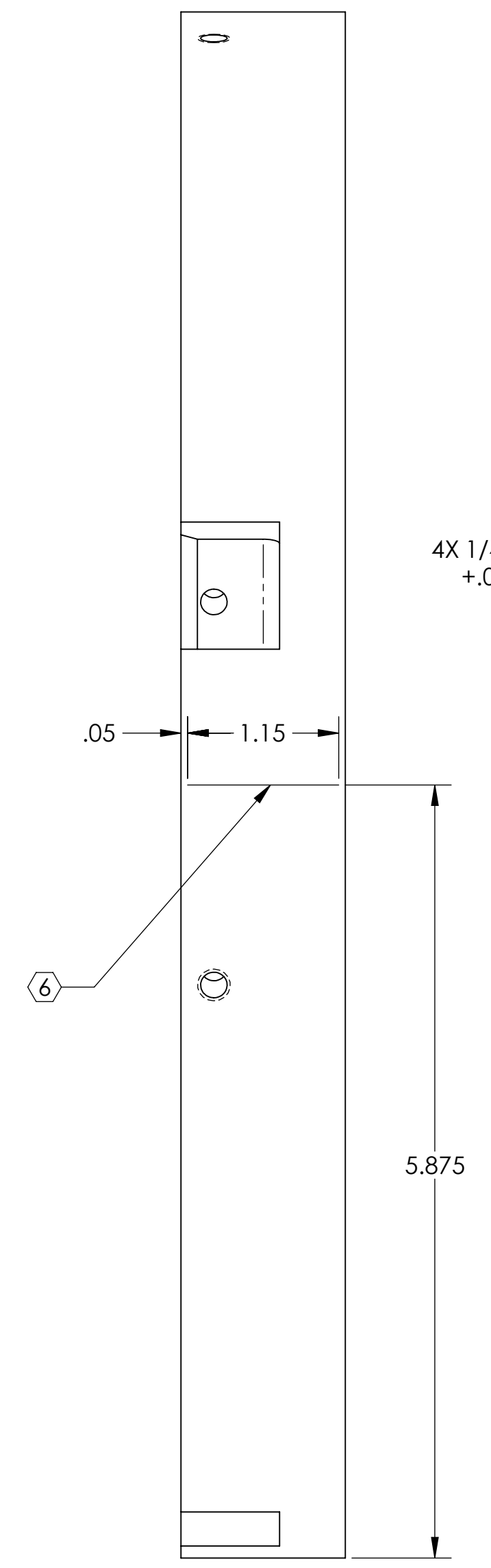
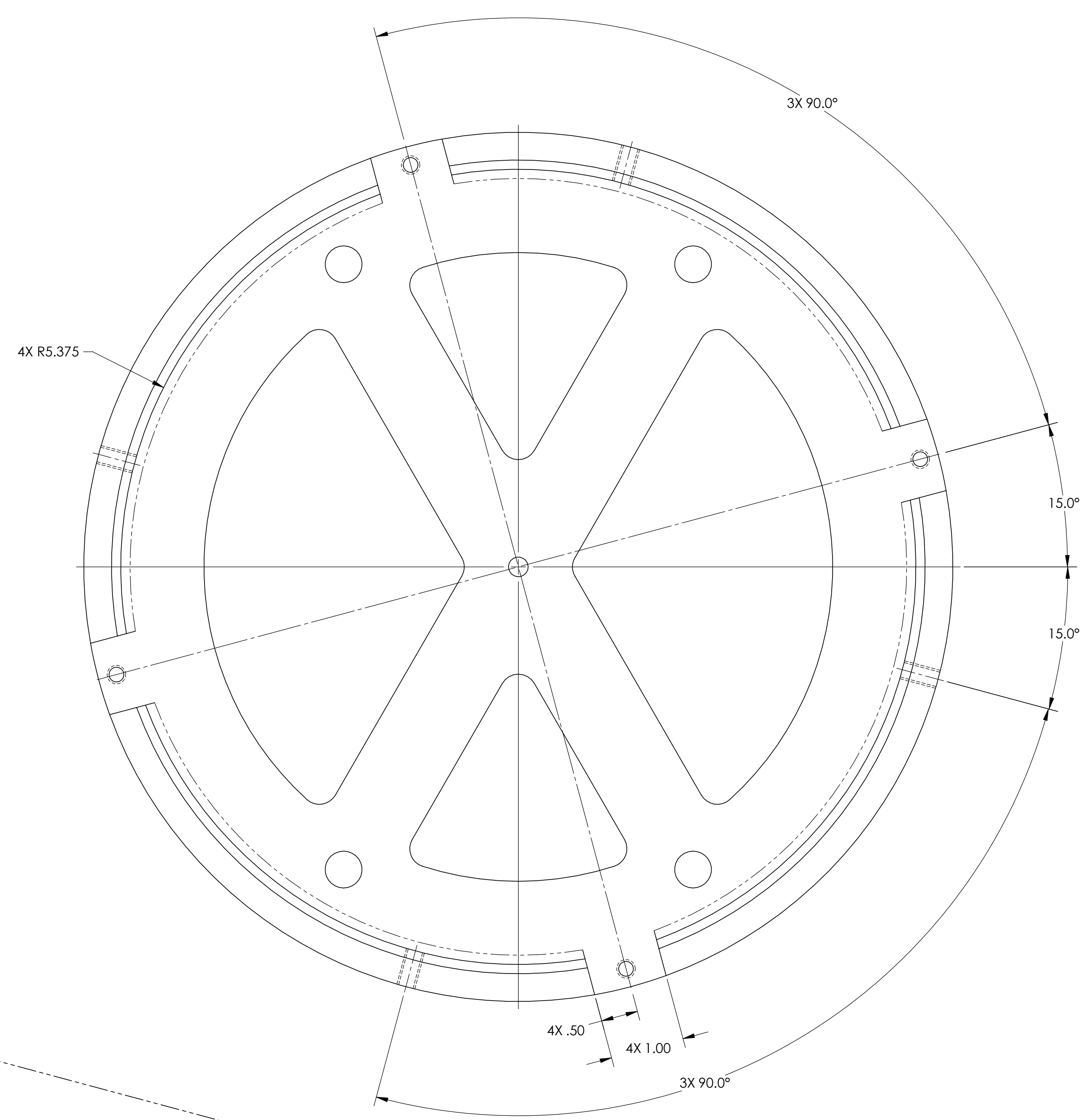
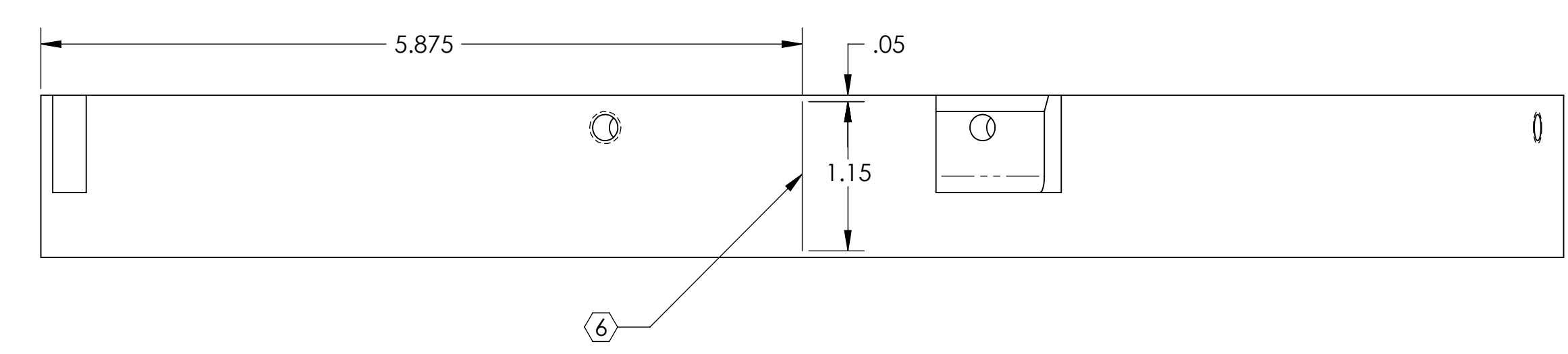


NOTES CONTINUED:
 ③ SCRIBE, ENGRAVE, OR MECHANICALLY STAMP (NO INKS OR DYES) DRAWING PART NUMBER AND REVISION ON NOTED SURFACE FOLLOWED ON THE NEXT LINE BY A THREE DIGIT SERIAL NUMBER. SERIAL NUMBERS START AT 001 FOR THE FIRST ARTICLE AND PROCEED CONSECUTIVELY. USE 17 HIGH CHARACTERS. EXAMPLE: DXXXXXXX-VY S/N 001. A VIBRATORY TOOL MAY BE USED.
 ④ SCRIBE OR ENGRAVE LINES AS SHOWN .02 MAX WIDE X .02 MAX DEEP.

| REV. | DATE | DCN # | DRAWING TREE # |
|------|-------------|----------|----------------|
| v1 | 15 SEP 2009 | E0900302 | E080191 |
| - | - | - | - |
| - | - | - | - |



| DIMENSIONS ARE IN INCHES | | NOTES AND TOLERANCES: (UNLESS OTHERWISE SPECIFIED) | | LIGO CALIFORNIA INSTITUTE OF TECHNOLOGY MASSACHUSETTS INSTITUTE OF TECHNOLOGY | | PART NAME | |
|---|--|--|--|---|--|-----------------------------------|--|
| TOLERANCES: .XX ± .01 .XXX ± .005 | | 1. INTERPRET DRAWING PER ASME Y14.5-1994. 2. REMOVE ALL SHARP EDGES, R.02 MIN. 3. DO NOT SCALE FROM DRAWING. 4. ALL MACHINING FLUIDS MUST BE FULLY SYNTHETIC, FULLY WATER SOLUBLE AND FREE OF SULFUR, SILICONE, AND CHLORINE. | | SYSTEM ADVANCED LIGO | | SUB-SYSTEM SUS | |
| ANGULAR ± 0.1° | | MATERIAL 6061-T6 Al | | FINISH 63 μinch | | NEXT ASSY POSITIONING STANDOFF | |
| | | | | DESIGNER D. BRIDGES | | DATE 14 SEP 2009 | |
| | | | | DRAFTER D. BRIDGES | | DATE 1 OCT 2009 | |
| | | | | CHECKER M. MEYER | | DATE 5 OCT 2009 | |
| | | | | APPROVAL | | | |
| | | | | SCALE: 1:1 | | PROJECTION: | |
| | | | | STANDOFF RING | | DWG. NO. D0902068 | |
| | | | | REV. v1 | | SHEET 1 OF 1 | |