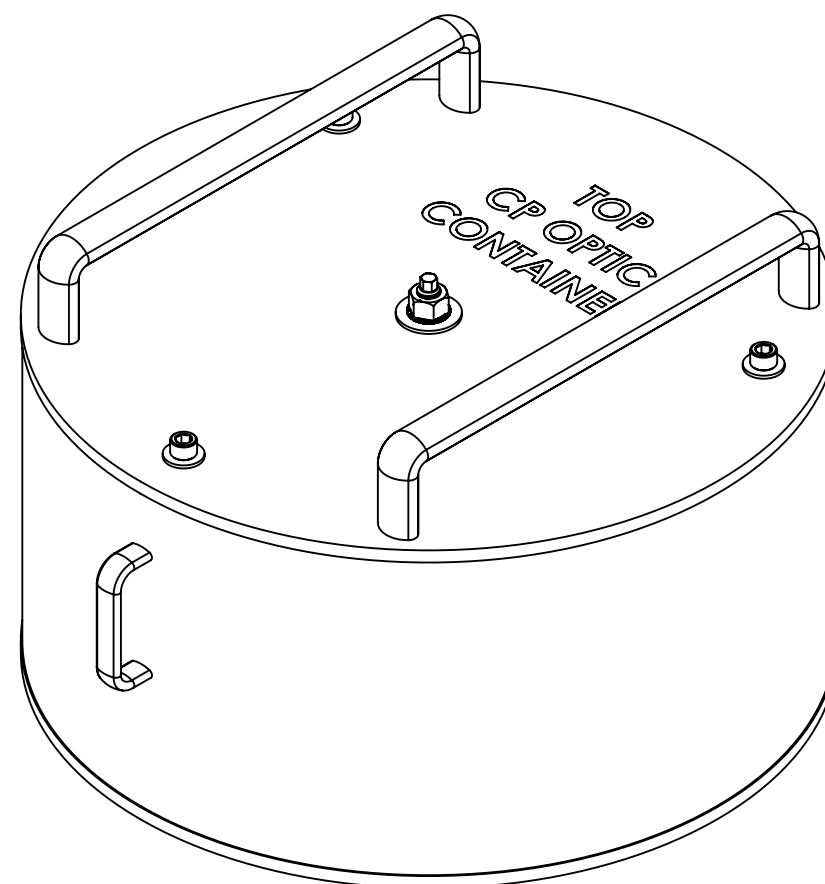
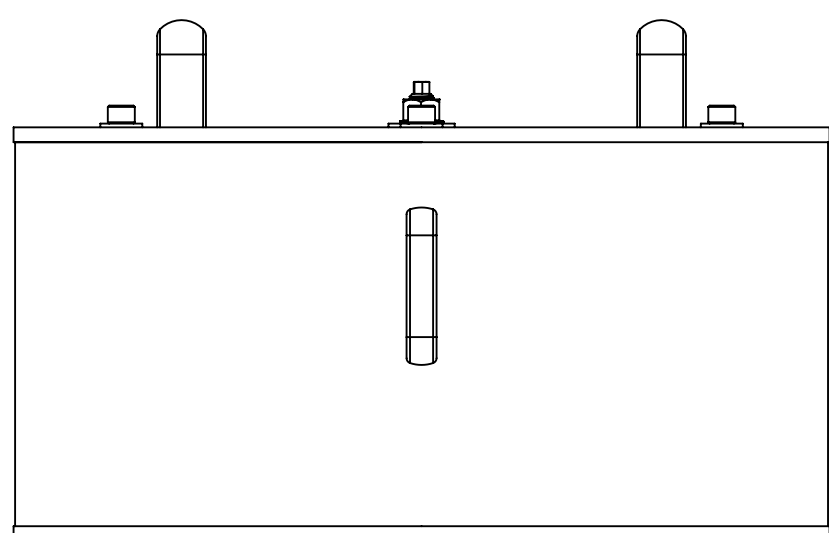


REV.	DATE	DCN #	DRAWING TREE #
v3	30 SEPT 2009	E0900322	
v8	08 SEP 2015	-	
-	-	-	



ISO VIEW



SEE SHEET 2 FOR CP OPTIC CONTAINER ASSEMBLY
 SEE SHEET 3 FOR TCP OPTIC CONTAINER ASSEMBLY
 SEE SHEET 4 FOR ERM/ AERM OPTIC CONTAINER ASSEMBLY

ITEM NO.	PART NUMBER	DESCRIPTION	MATERIAL	CP Optic/REQ
35	D0902520-4	OVERSIZE LOCATING SLEEVE, CP, COC CONTAINER	PFA440 HP	1
34	D0902520-3	OVERSIZE LOCATING SLEEVE, CP, COC CONTAINER	PFA440 HP	1
33	D0902520-2	OVERSIZE LOCATING SLEEVE, CP, COC CONTAINER	PFA440 HP	1
32	D0902520-1	OVERSIZE LOCATING SLEEVE, CP, COC CONTAINER	PFA440 HP	1
31	D0902495	GUIDE, OPTIC, COC CONTAINER	PFA440 HP	3
30	ROW Inc.	O-Ring, Base FM, .188 Thick X 16.375 ID	PFA Encapsulat ed Viton	2
29	ROW Inc.	O-Ring, Supporting Optic, ETM, .275 Thick X 12.500 ID	PFA Encapsulat ed Viton	1
28	ROW Inc.	O-Ring, Supporting Optic, SR, .275 Thick X 9.500 ID	PFA Encapsulat ed Viton	1
27	D1001025	SHIPPING SLEEVE, TCP, COC CONTAINER	6061-T6 Al	-
26	D1000958	ADAPTER, TCP SUBSTRATE	6061-T6 Al	-
25	D0902536	PULL HANDLE, MODIFIED MC #1897A49	6061-T6 Al	2
24	D0902490	COVER, CENTRYCO CC-22-025-0050-013-DAE	301 SSSL	1
23	D0902331	RETAINER FOR CENTRYO COVER	304 SSSL	1
22	D0902330	PILOT FOR CENTRYO COVER	304 SSSL	1
21	D0902028	THRUST PAD, WEDGE PLATE CLAMP, COC CONTAINER	17-4 PH SS	1
20	D0902027	PULL HANDLE, 337LB LOAD RATED	6061-T6 Al	2
19	D0902026	CLAMP, WEDGE PLATE, COC CONTAINER	300 SSSL	1
18	D0902016	SHIPPING SLEEVE, CP, COC CONTAINER	6061-T6 Al	3
17	D0901890	OUTER SLEEVE, CP, COC CONTAINER	304 SSSL	1
16	D0901889	LOCATING SLEEVE, CP, COC CONTAINER	PFA440 HP	3
15	D0901887	LOCATING SHAFT, CP, COC CONTAINER	304 SSSL	3
14	D0901885	WEDGE PLATE, CP, COC OPTIC CONTAINER	6061-T6 Al	1
13	D0901884	TOP PLATE, CP, COC OPTIC CONTAINER	6061-T6 Al	1
12	D0901883	BASE PLATE, CP, COC OPTIC CONTAINER	6061-T6 Al	1
11	C-606-N	SCREW, SHC, 6-32 x 3/8, (UC Comp #C-606-N)	300 SSSL	4
10	98449A033	WASHER, LOCK, INT TOOTH 1/2", ASME B18.21.1 MC #98449A033	410 SSSL	1
9	98019A510	WASHER, FLAT, 1/2, MS15795-819, MC #98019A510	18-8 SSSL	1
8	98019A399	WASHER, FLAT, 3/8, MS15795-814, MC #98019A399	18-8 SSSL	3
7	92200A682	SCREW, SHC, 3/8-16 x 1 1/4, MS16995-82, MC #92200A682	18-8 SSSL	3
6	92200A630	SCREW, SHC, 5/16-18 x 1, MS16995-66, MC #92200A630	18-8 SSSL	4
5	92200A340	SCREW, SHC, 10-32 x 3/8, MS16995-9, MC #92200A340	18-8 SSSL	4
4	92200A150	SCREW, SHC, 6-32 x 5/8, MS16995-19, MC #92200A150	300 SSSL	-
3	92200A144	SCREW, SHC, 6-32 x 1/4, MS16995-16, MC #92200A144	300 SSSL	4
2	90762A139	1/2 HEX NUT, MS51972-5, MC #90762A139	300 SSSL	1
1	1726A7	PULL HANDLE, MC #1726A7	304 SSSL	2

NOTES AND TOLERANCES: (UNLESS OTHERWISE SPECIFIED)

DIMENSIONS ARE IN INCHES

TOLERANCES:
 .XX ± .01
 .XXX ± .005
 ANGULAR ± 0.5°

MATERIAL: N/A
 FINISH: N/A μinch

SYSTEM: ADVANCED LIGO
 SUB-SYSTEM: COC
 NEXT ASSY:

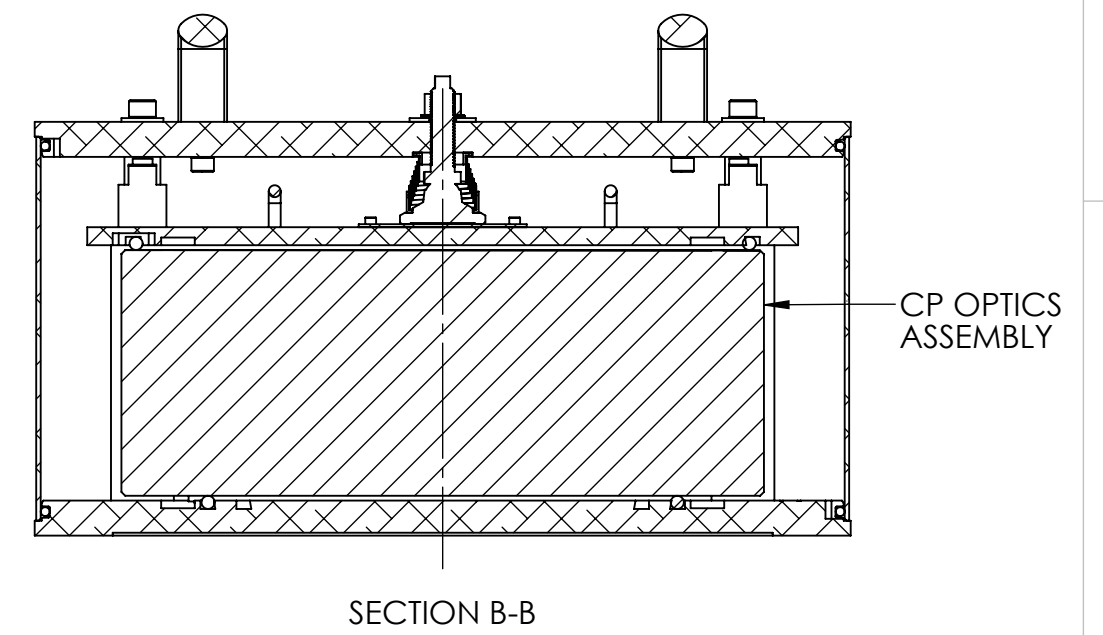
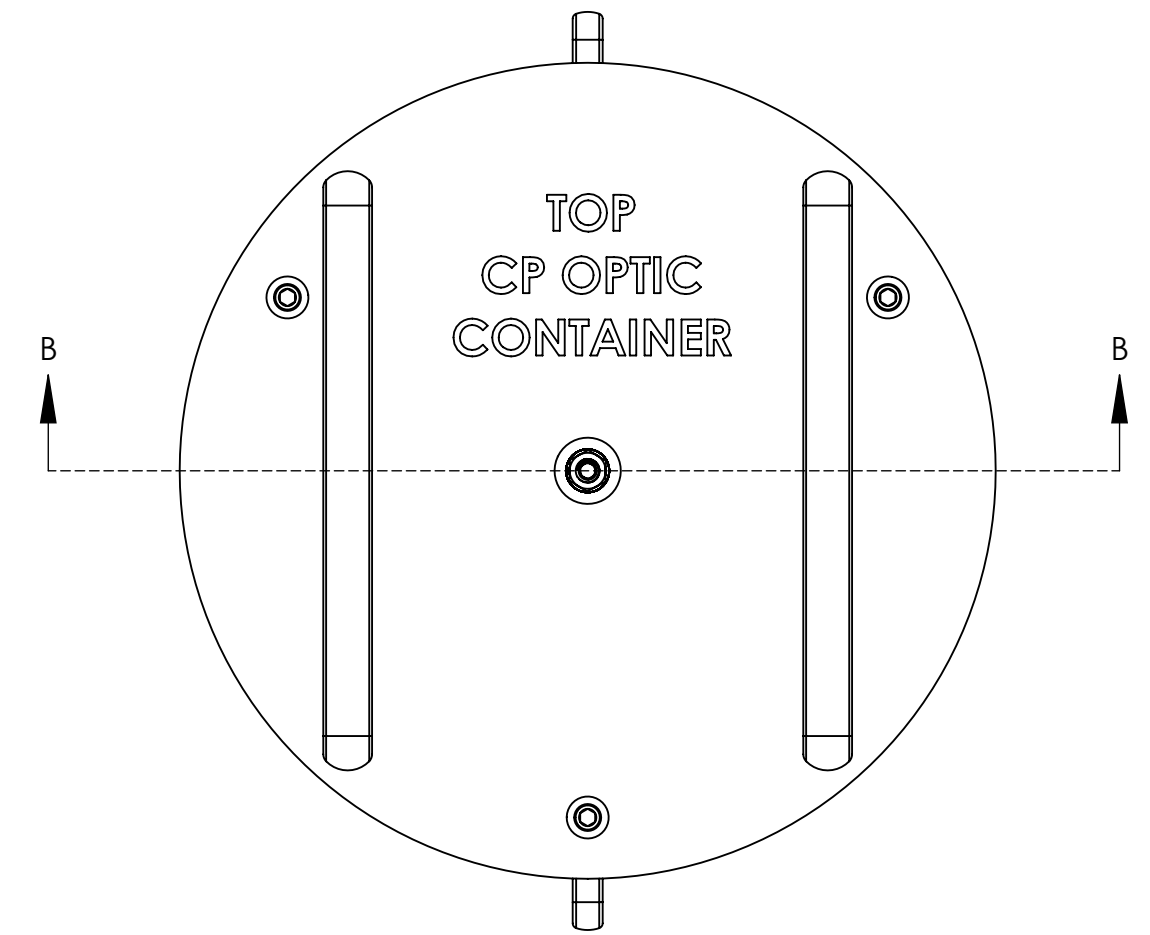
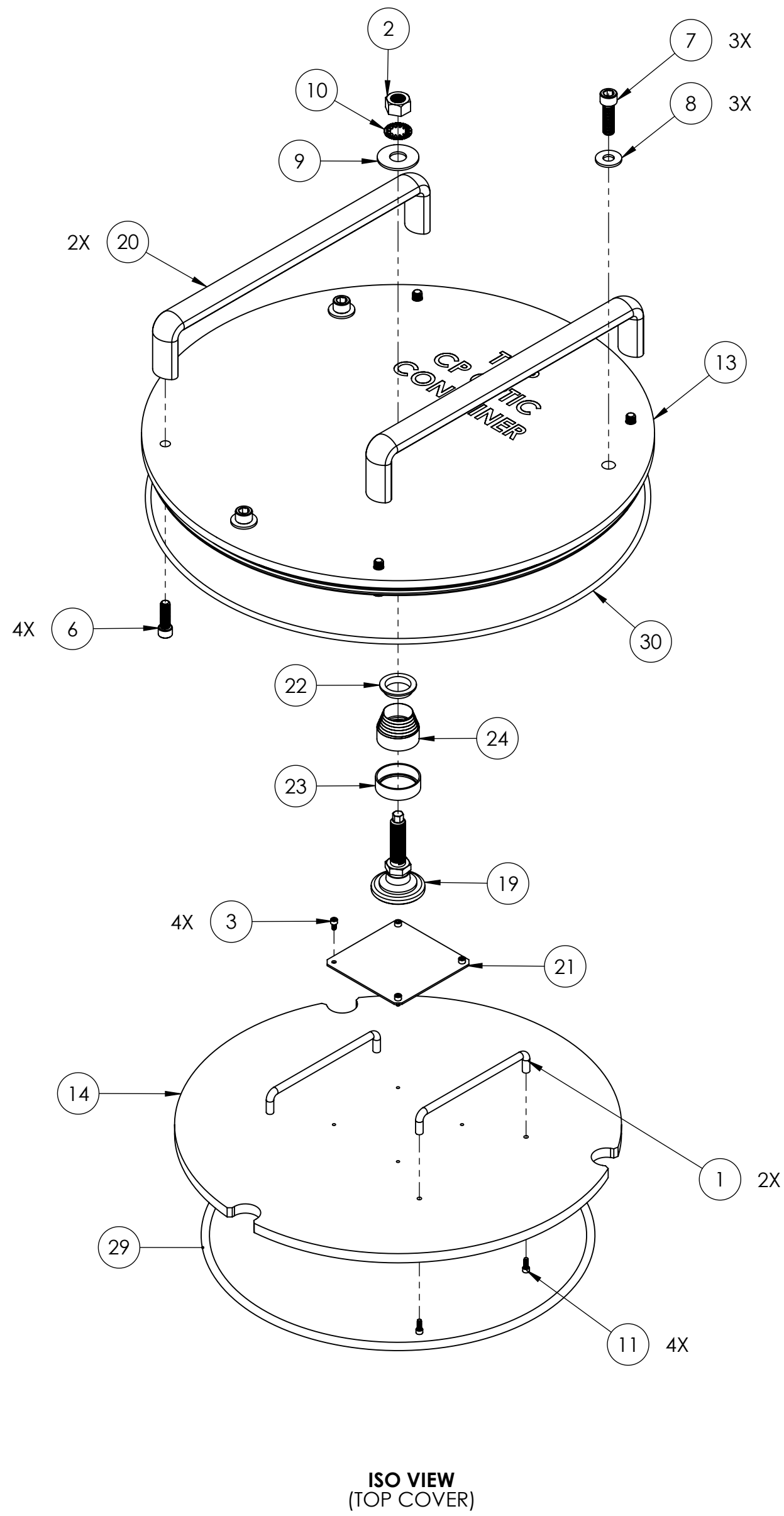
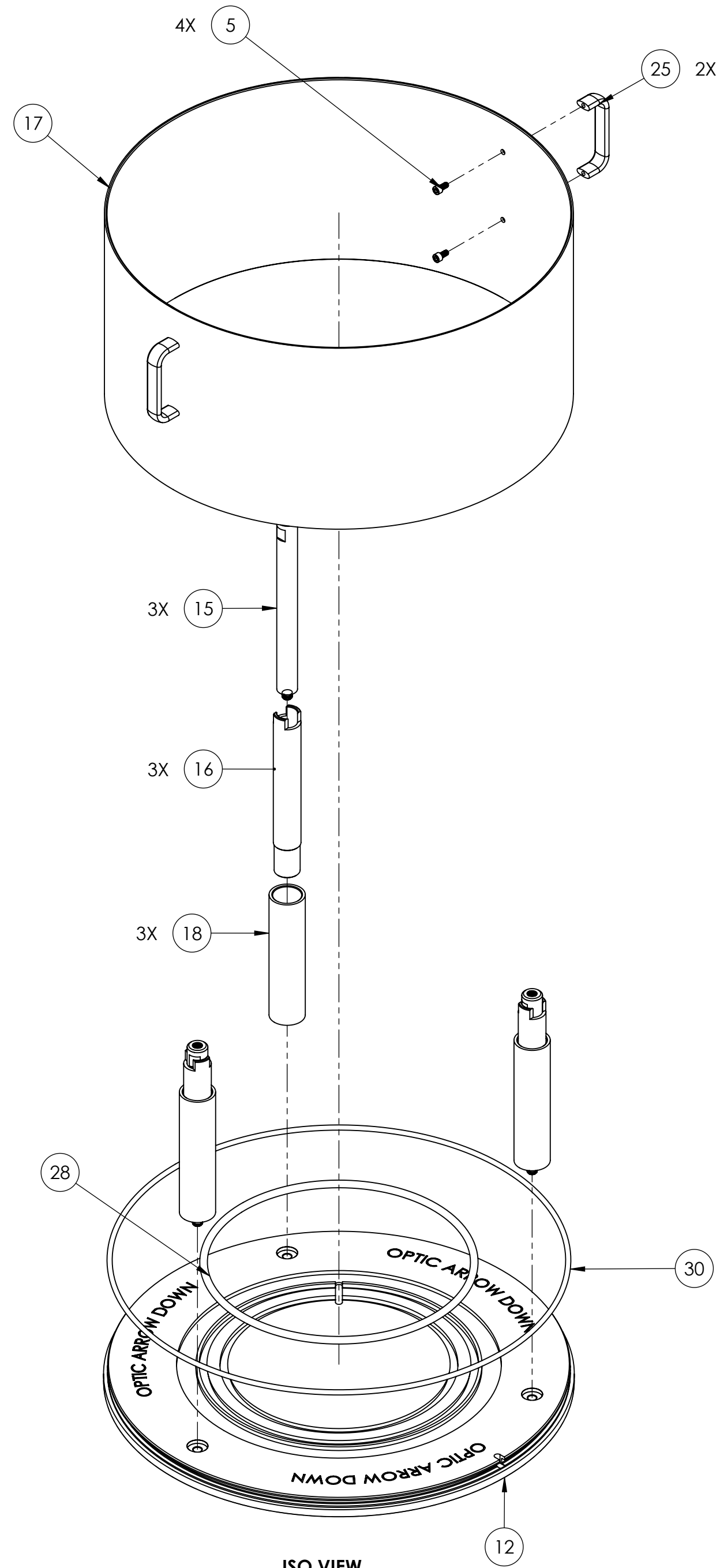
PART NAME: CP, TCP, COC CONTAINER ASSEMBLY

DESIGNER: K. BUCKLAND 28 AUG 2009
 DRAFTER: K. BUCKLAND 1 SEPT 2009
 CHECKER: K. MAILAND 8 OCT 2009
 APPROVAL: C. TORRIE 8 OCT 2009

SIZE: c
 DWG. NO.: D0902001
 SCALE: 1:4
 PROJECTION: [Symbol]

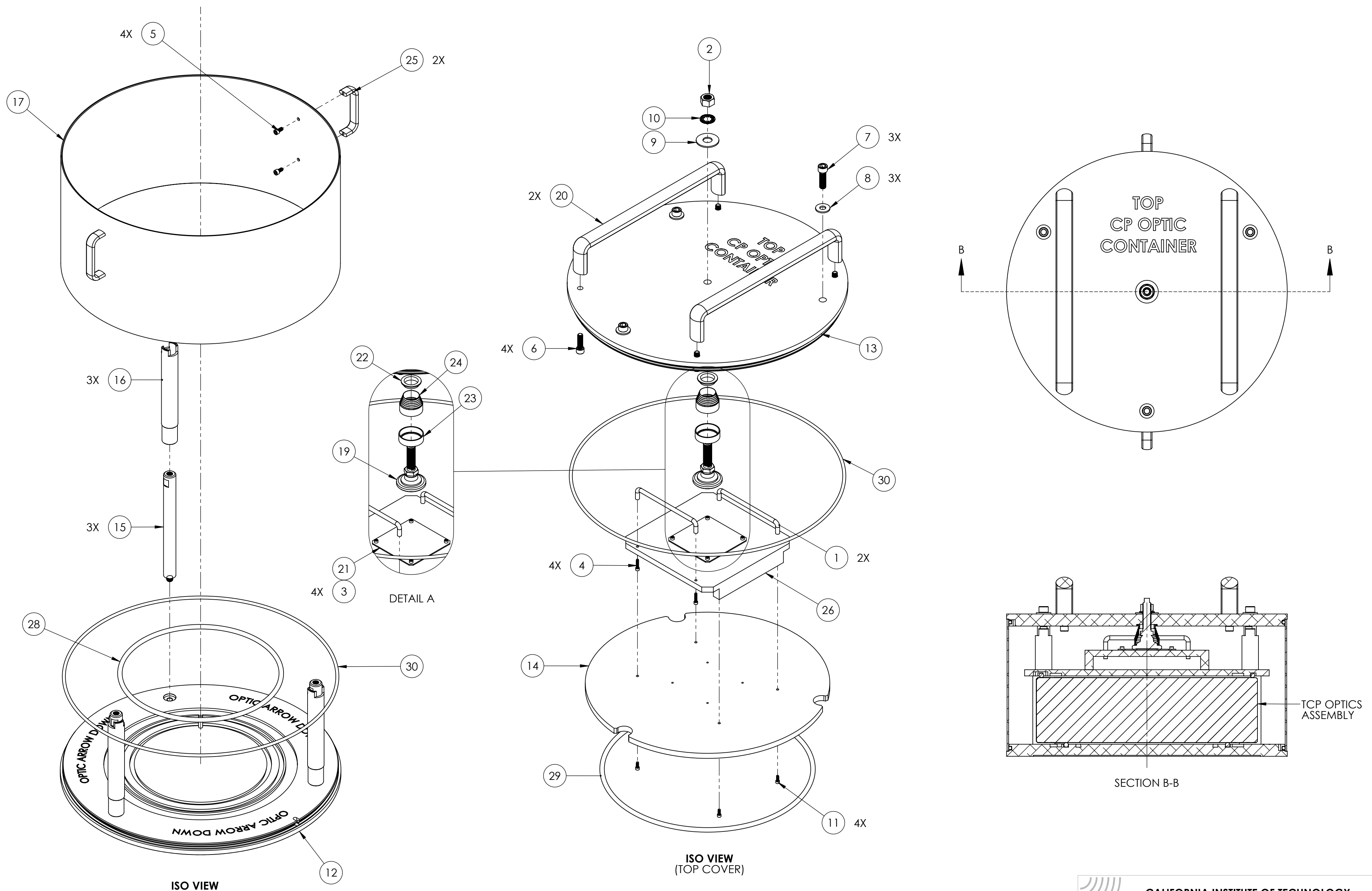
REV. v8
 SHEET 1 OF 4

CP OPTIC CONTAINER ASSEMBLY



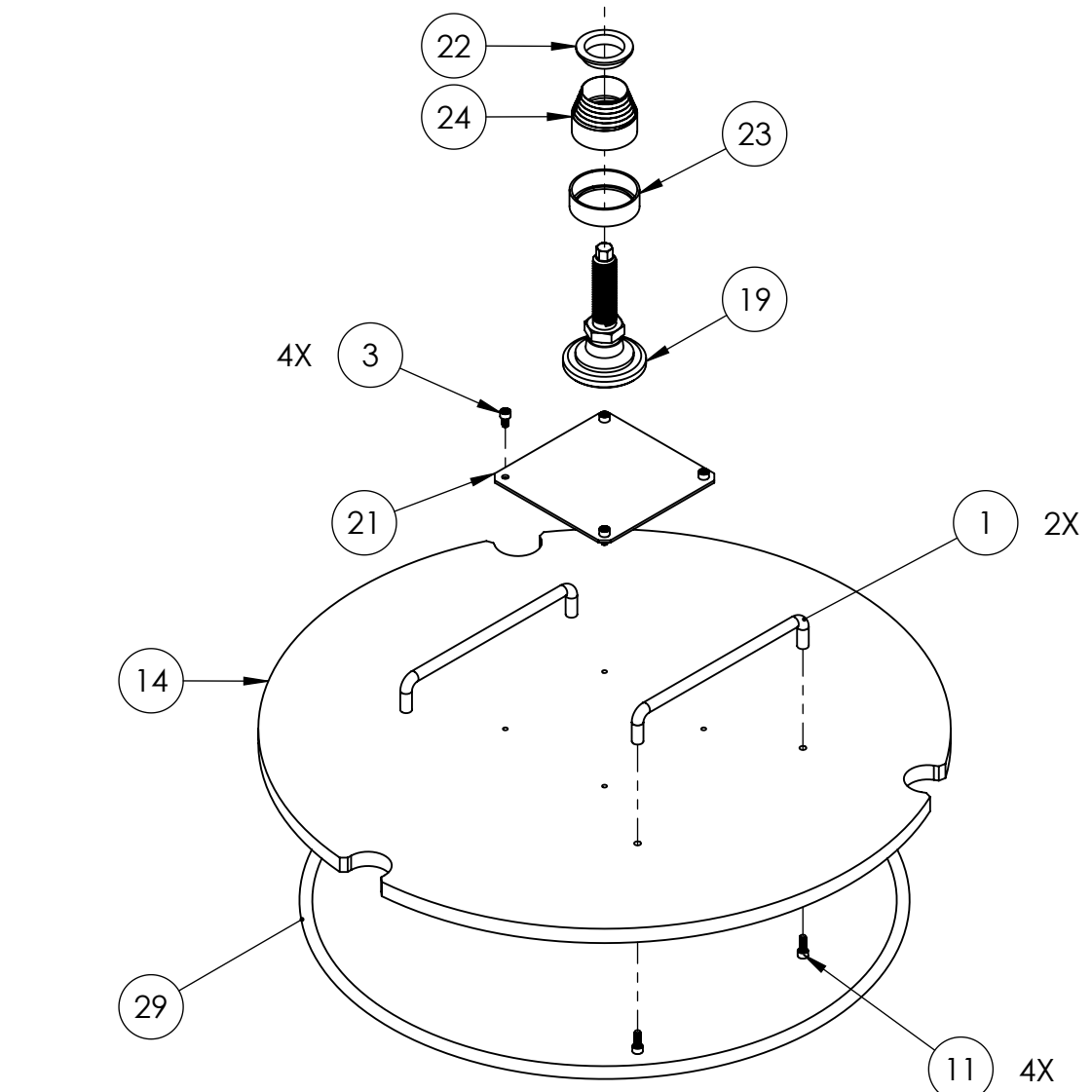
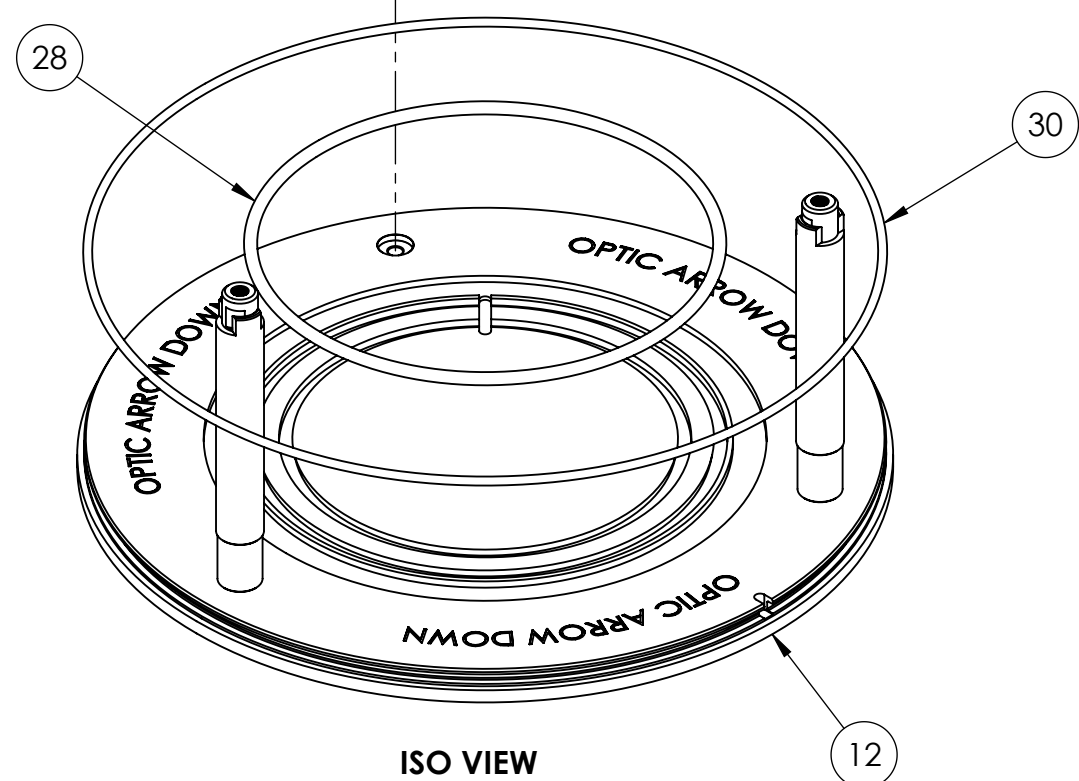
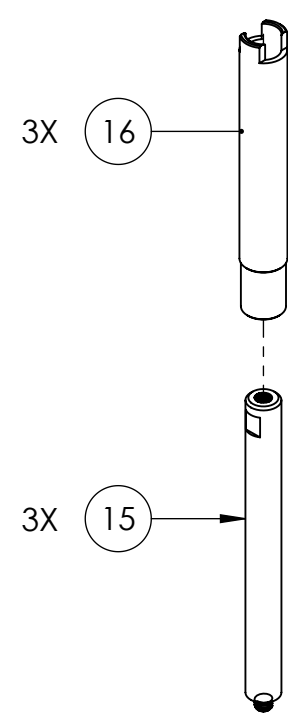
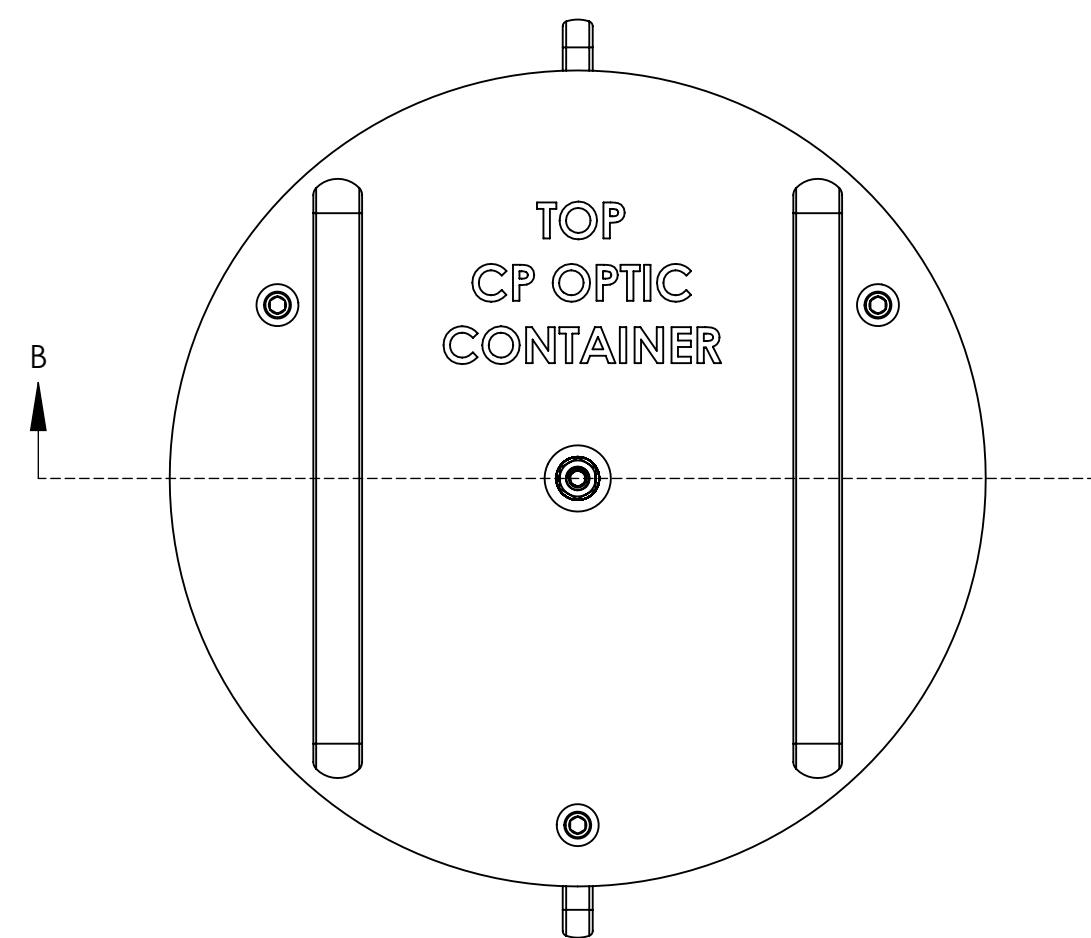
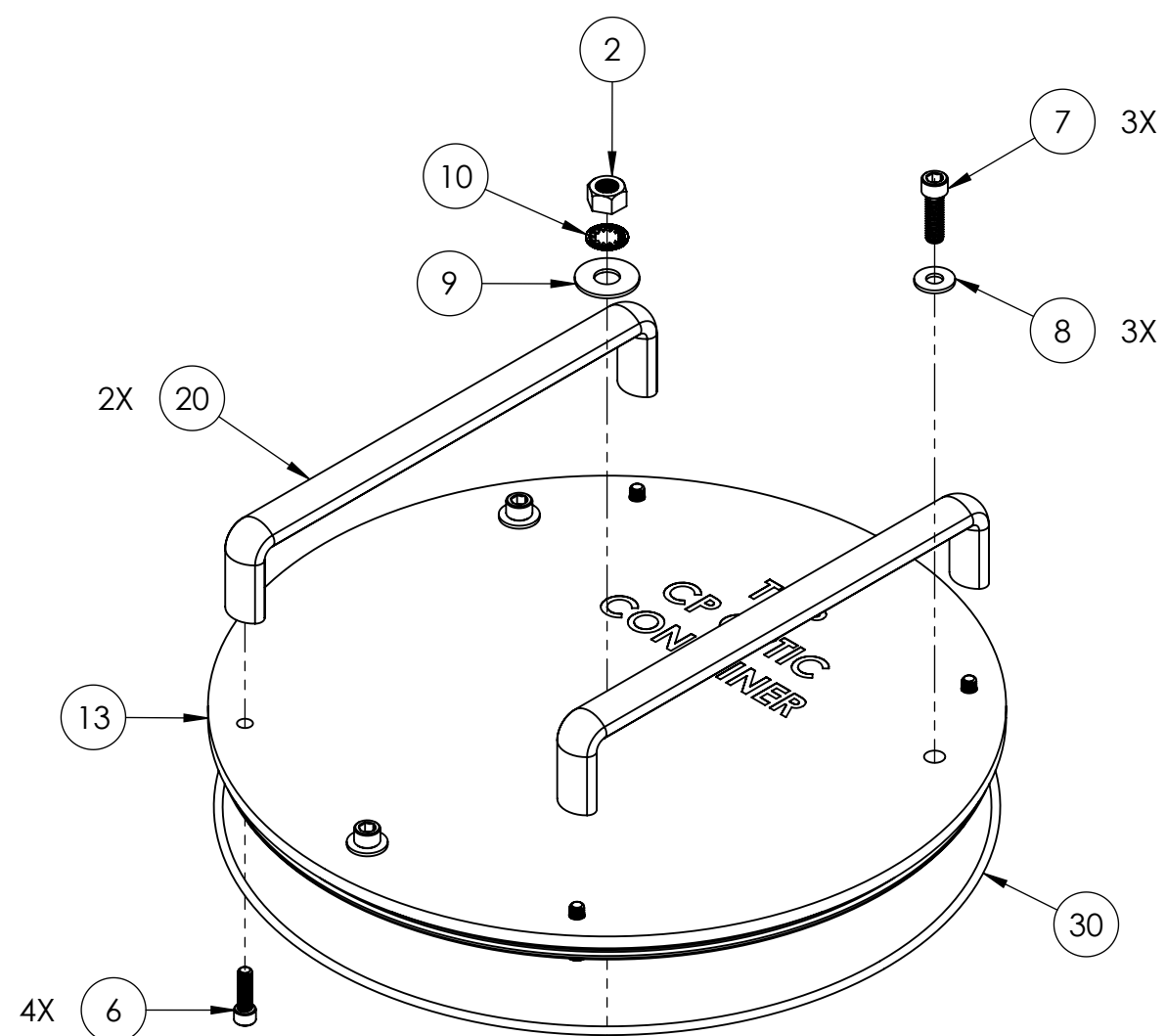
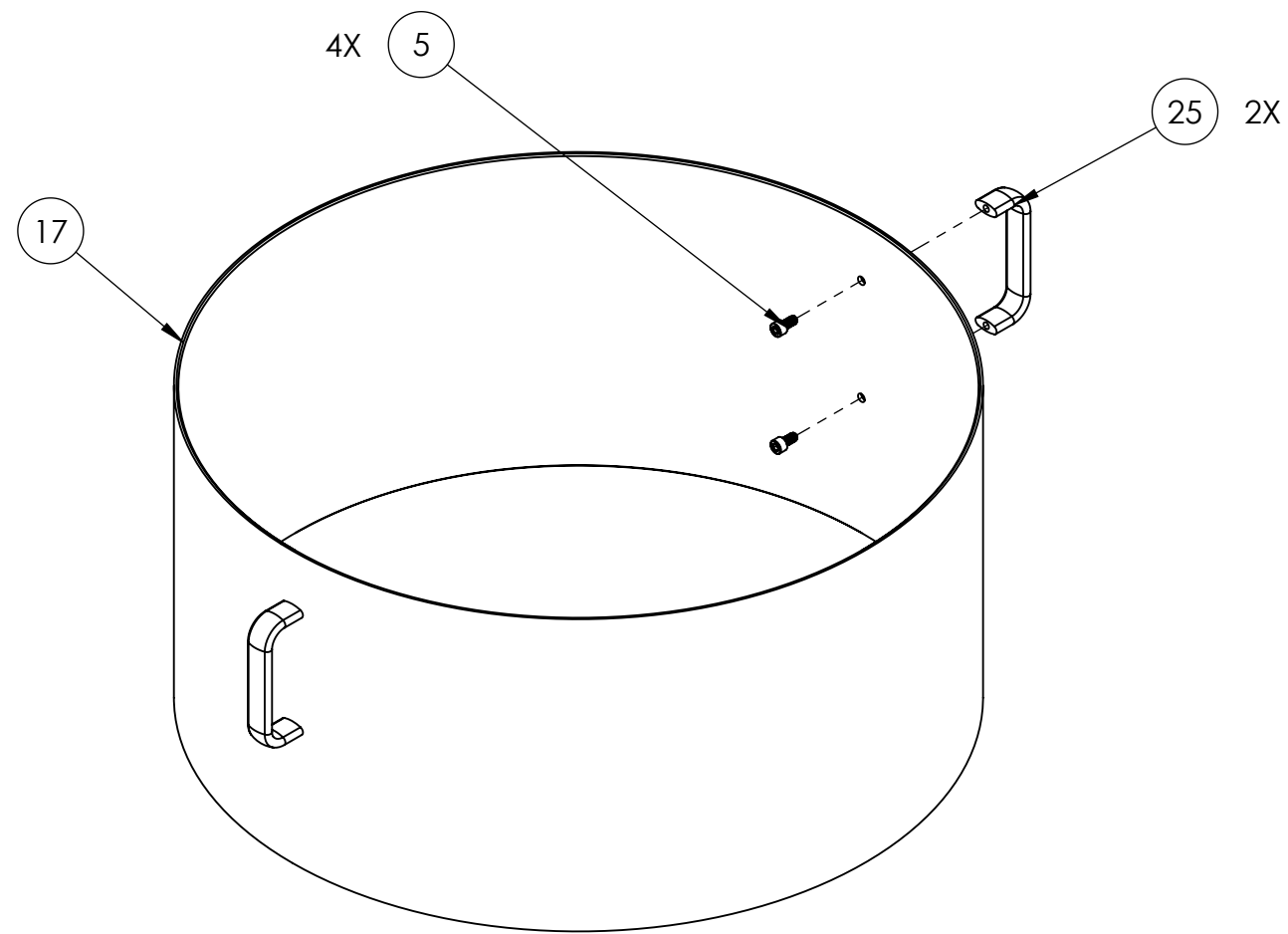
LIGO CALIFORNIA INSTITUTE OF TECHNOLOGY MASSACHUSETTS INSTITUTE OF TECHNOLOGY		
SIZE	DWG. NO.	REV.
C	D0902001	v8
SCALE: 1:4	PROJECTION:	SHEET 2 OF 4

TCP OPTIC CONTAINER ASSEMBLY

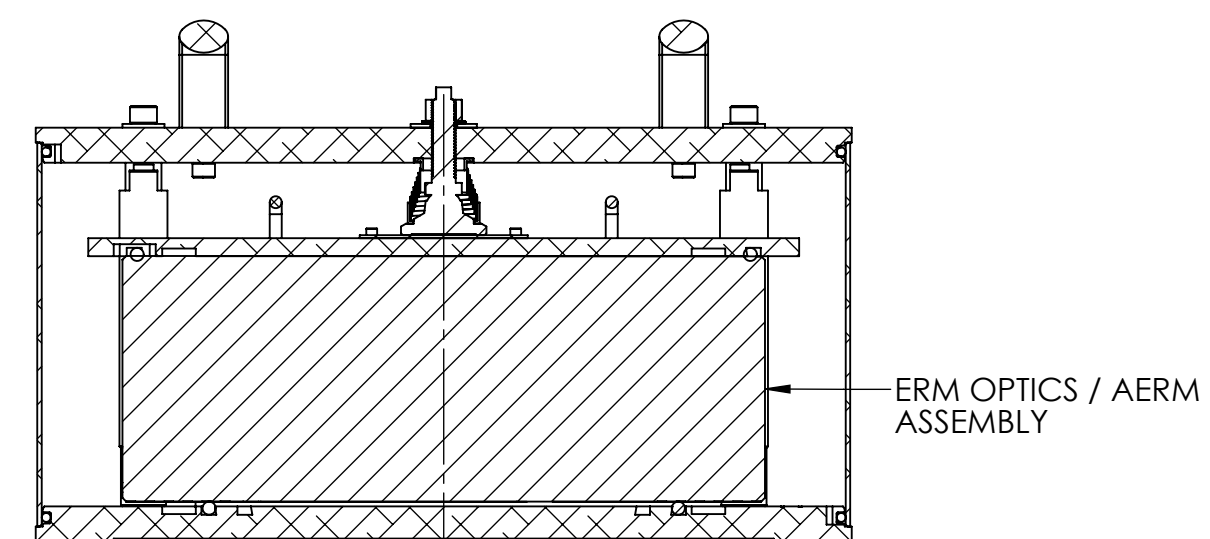


LIGO CALIFORNIA INSTITUTE OF TECHNOLOGY MASSACHUSETTS INSTITUTE OF TECHNOLOGY		REV. v8
SIZE C	DWG. NO. D0902001	
SCALE: 1:4	PROJECTION:	SHEET 3 OF 4

ERM OPTIC AND AERM CONTAINER ASSEMBLY



ISO VIEW
(TOP COVER)



SECTION B-B

LIGO CALIFORNIA INSTITUTE OF TECHNOLOGY MASSACHUSETTS INSTITUTE OF TECHNOLOGY		
SIZE C	DWG. NO. D0902001	REV. v8
SCALE: 1:4	PROJECTION:	SHEET 4 OF 4