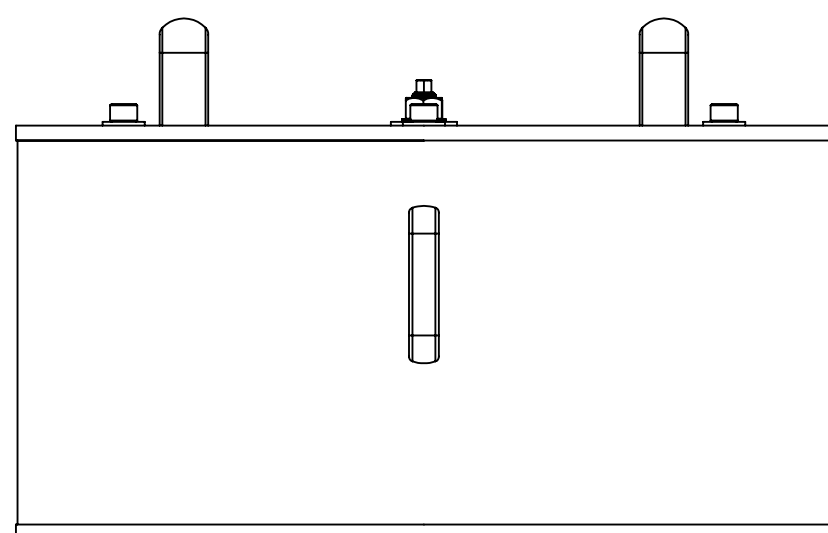
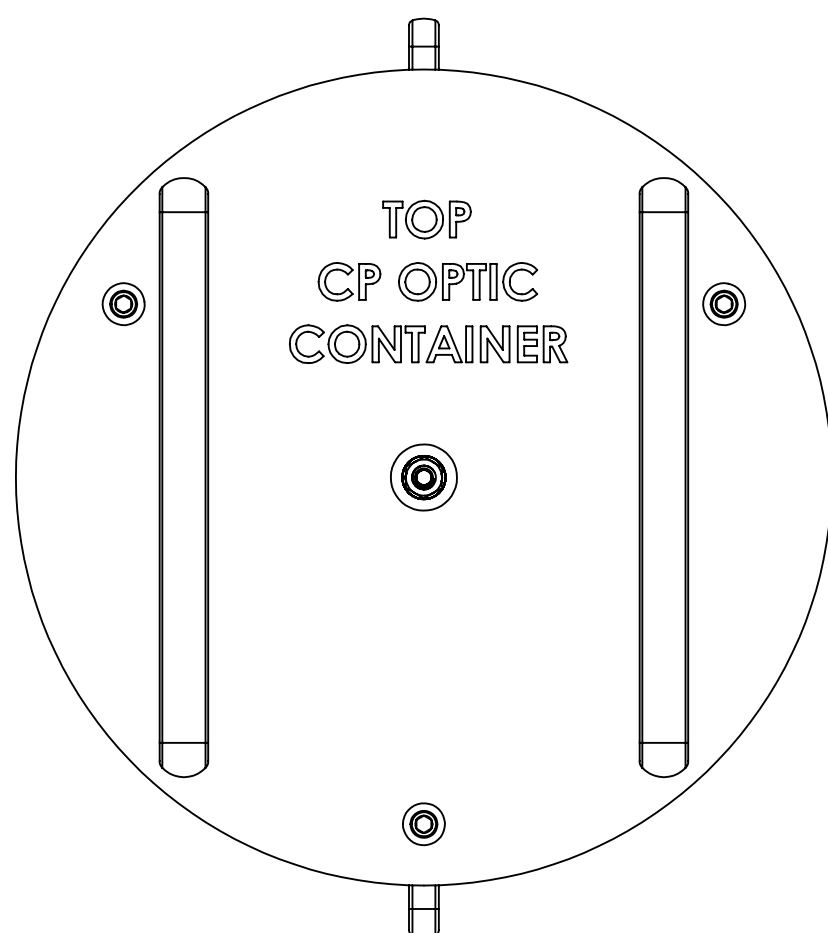


NOTES CONTINUED:
 ⑤ SCRIBE, ENGRAVE, OR MECHANICALLY STAMP (NO INKS OR DYES) DRAWING PART NUMBER, REVISION (AND VARIANT OR "TYPE" IF APPLICABLE) ON NOTED SURFACE OF PART FOLLOWED ON THE NEXT LINE WITH A THREE DIGIT SERIAL NUMBER. SERIAL NUMBERS START AT 001 FOR THE FIRST ARTICLE AND PROCEED CONSECUTIVELY. USE MINIMUM 0.12" HIGH CHARACTERS, UNLESS THE SIZE OF THE PART DICTATES SMALLER CHARACTERS. A VIBRATORY TOOL MAY BE USED.
 EXAMPLE: DXXXXXX-VY, TYPE-XX, S/N XXX



SEE SHEET 2 FOR CP OPTIC CONTAINER ASSEMBLY
 SEE SHEET 3 FOR TCP OPTIC CONTAINER ASSEMBLY

REV.	DATE	DCN #	DRAWING TREE #
v3	30 SEPT 2009	E0900322	
v4	23 OCT 2009	E0900380	
v5	12 NOV 2009	E0900383	
v6	30 OCT 2009	E0900412	
v7	27 APR 2010	E1000141	

ITEM NO.	PART NUMBER	DESCRIPTION	MATERIAL	REQ	SPARE	TOTAL
ALT	ROW, Inc	O-Ring, Supporting Optic, SR, .275 Thick x 9.000 ID	PFA Encapsulated Viton	1		1
ALT	D0902520-4	OVERSIZE LOCATING SLEEVE, CP, COC CONTAINER	PFA440 HP	1		1
ALT	D0902520-3	OVERSIZE LOCATING SLEEVE, CP, COC CONTAINER	PFA440 HP	1		1
ALT	D0902520-2	OVERSIZE LOCATING SLEEVE, CP, COC CONTAINER	PFA440 HP	1		1
ALT	D0902520-1	OVERSIZE LOCATING SLEEVE, CP, COC CONTAINER	PFA440 HP	1		1
ALT	D0902495	GUIDE, OPTIC, COC CONTAINER	PFA440 HP	3		3
30	ROW Inc.	O-Ring, Base FM, .188 Thick X 16.375 ID	PFA Encapsulated Viton	2		2
29	ROW Inc.	O-Ring, Supporting Optic, ETM, .275 Thick X 12.500 ID	PFA Encapsulated Viton	1		1
28	ROW Inc.	O-Ring, Supporting Optic, SR, .275 Thick X 9.500 ID	PFA Encapsulated Viton	1		1
27	D1001025	SHIPPING SLEEVE, TCP, COC CONTAINER	6061-T6 Al	3		3
26	D1000958	ADAPTER, TCP SUBSTRATE	6061-T6 Al	1		1
25	D0902536	PULL HANDLE, MODIFIED MC #1897A49	6061-T6 Al	2		2
24	D0902490	COVER, CENTRYCO CC-22-025-0050-013-DAE	301 SSSL	1		1
23	D0902331	RETAINER FOR CENTRYO COVER	304 SSSL	1		1
22	D0902330	PILOT FOR CENTRYO COVER	304 SSSL	1		1
21	D0902028	THRUST PAD, WEDGE PLATE CLAMP, COC CONTAINER	17-4 PH SS	1		1
20	D0902027	PULL HANDLE, 337LB LOAD RATED	6061-T6 Al	2		2
19	D0902026	CLAMP, WEDGE PLATE, COC CONTAINER	300 SSSL	1		1
18	D0902016	SHIPPING SLEEVE, CP, COC CONTAINER	6061-T6 Al	3		3
17	D0901890	OUTER SLEEVE, CP, COC CONTAINER	304 SSSL	1		1
16	D0901889	LOCATING SLEEVE, CP, COC CONTAINER	PFA440 HP	3		3
15	D0901887	LOCATING SHAFT, CP, COC CONTAINER	304 SSSL	3		3
14	D0901885	WEDGE PLATE, CP, COC OPTIC CONTAINER	6061-T6 Al	1		1
13	D0901884	TOP PLATE, CP, COC OPTIC CONTAINER	6061-T6 Al	1		1
12	D0901883	BASE PLATE, CP, COC OPTIC CONTAINER	6061-T6 Al	1		1
11	C-606-N	SCREW, SHC, 6-32 x 3/8, (UC Comp #C-606-N)	300 SSSL	4		4
10	98449A033	WASHER, LOCK, INT TOOTH 1/2", ASME B18.21.1 MC #98449A033	410 SSSL	1		1
9	98019A510	WASHER, FLAT, 1/2, MS15795-819, MC #98019A510	18-8 SSSL	1		1
8	98019A399	WASHER, FLAT, 3/8, MS15795-814, MC #98019A399	18-8 SSSL	3		3
7	92200A682	SCREW, SHC, 3/8-16 x 1 1/4, MS16995-82, MC #92200A682	18-8 SSSL	3		3
6	92200A630	SCREW, SHC, 5/16-18 x 1, MS16995-66, MC #92200A630	18-8 SSSL	4		4
5	92200A340	SCREW, SHC, 10-32 x 3/8, MS16995-9, MC #92200A340	18-8 SSSL	4		4
4	92200A150	SCREW, SHC, 6-32 x 5/8, MS16995-19, MC #92200A150	18-8 SSSL	4		4
3	92200A144	SCREW, SHC, 6-32 x 1/4, MS16995-16, MC#92200A144	300 SSSL	4		4
2	90762A139	1/2 HEX NUT, MS51972-5, MC #90762A139	300 SSSL	1		1
1	1726A7	PULL HANDLE, MC #1726A7	304 SSSL	2		2

NOTES AND TOLERANCES: (UNLESS OTHERWISE SPECIFIED)

1. INTERPRET DRAWING PER ASME Y14.5-1994.
 2. REMOVE ALL SHARP EDGES, R.02 MIN.
 3. DO NOT SCALE FROM DRAWING.
 4. ALL MACHINING FLUIDS MUST BE FULLY SYNTHETIC, FULLY WATER SOLUBLE AND FREE OF SULFUR, SILICONE, AND CHLORINE.

TOLERANCES:
 .XX ± .01
 .XXX ± .005

ANGULAR ± 0.5°

MATERIAL N/A FINISH N/A μinch

LIGO CALIFORNIA INSTITUTE OF TECHNOLOGY
 MASSACHUSETTS INSTITUTE OF TECHNOLOGY

SYSTEM **ADVANCED LIGO** SUB-SYSTEM **COC**

NEXT ASSY

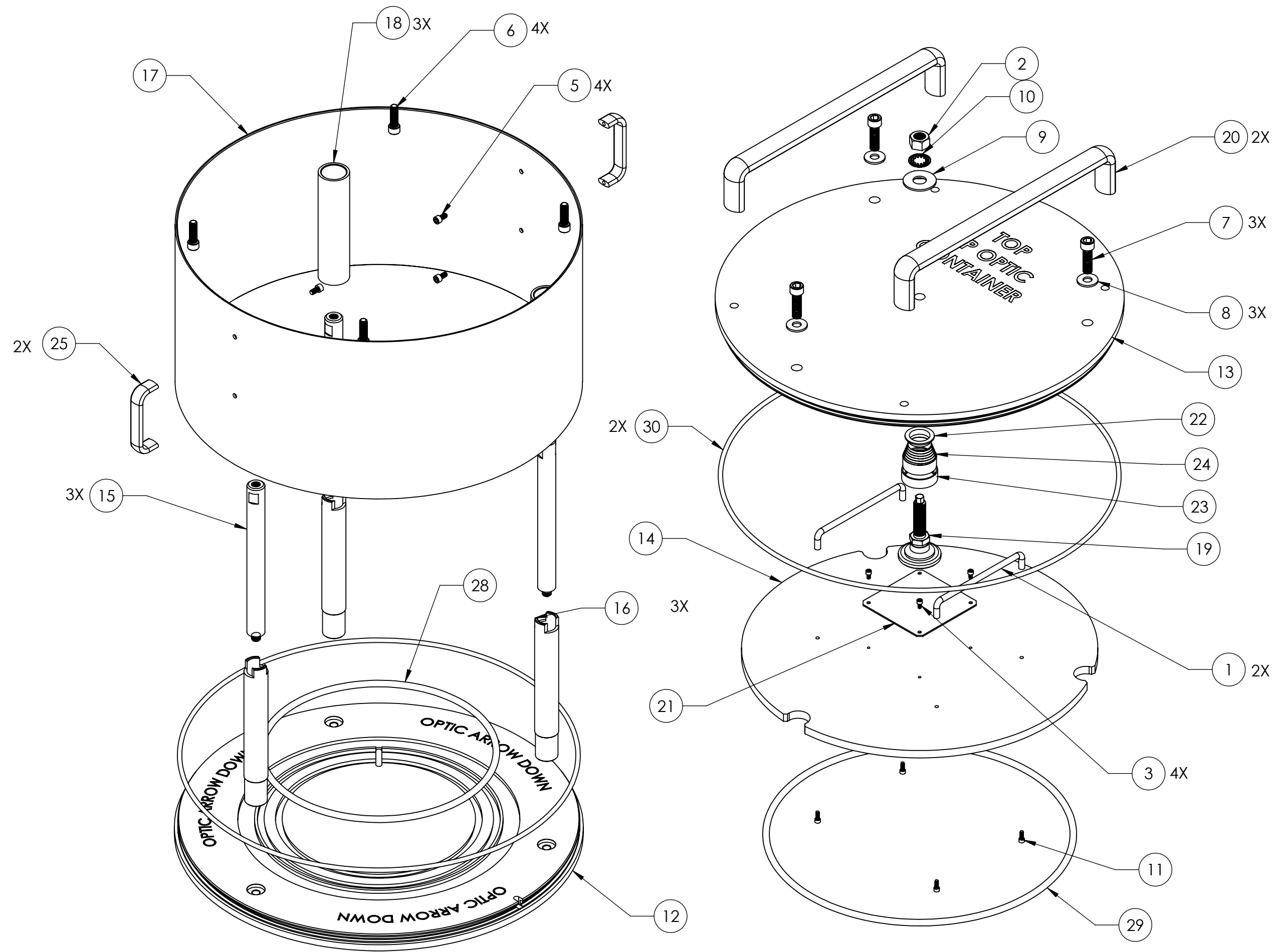
PART NAME **CP, TCP, COC CONTAINER ASSEMBLY**

DESIGNER K. BUCKLAND 28 AUG 2009 SIZE DWG. NO. **D0902001** REV. **v7**



DRAFTER K. BUCKLAND 1 SEPT 2009

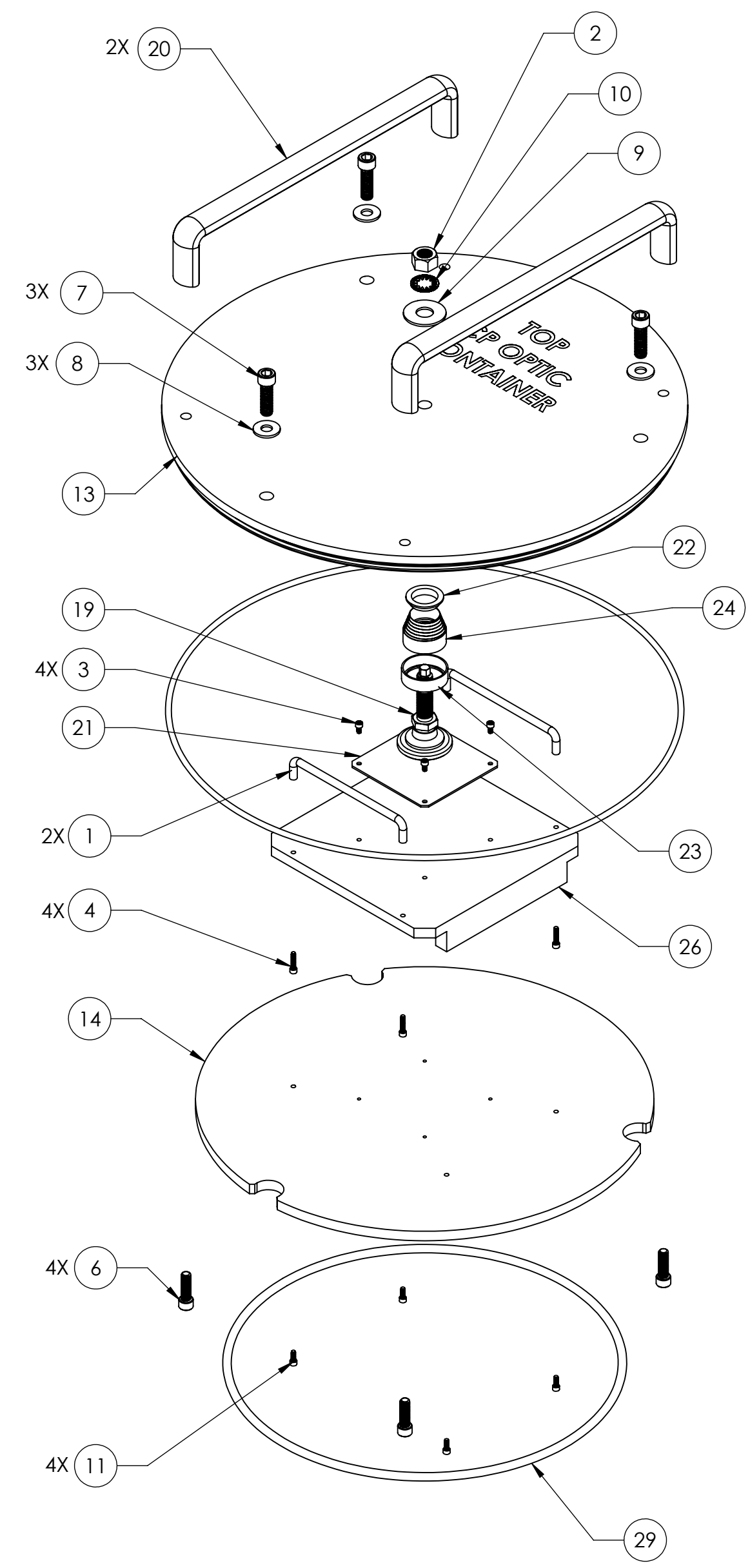
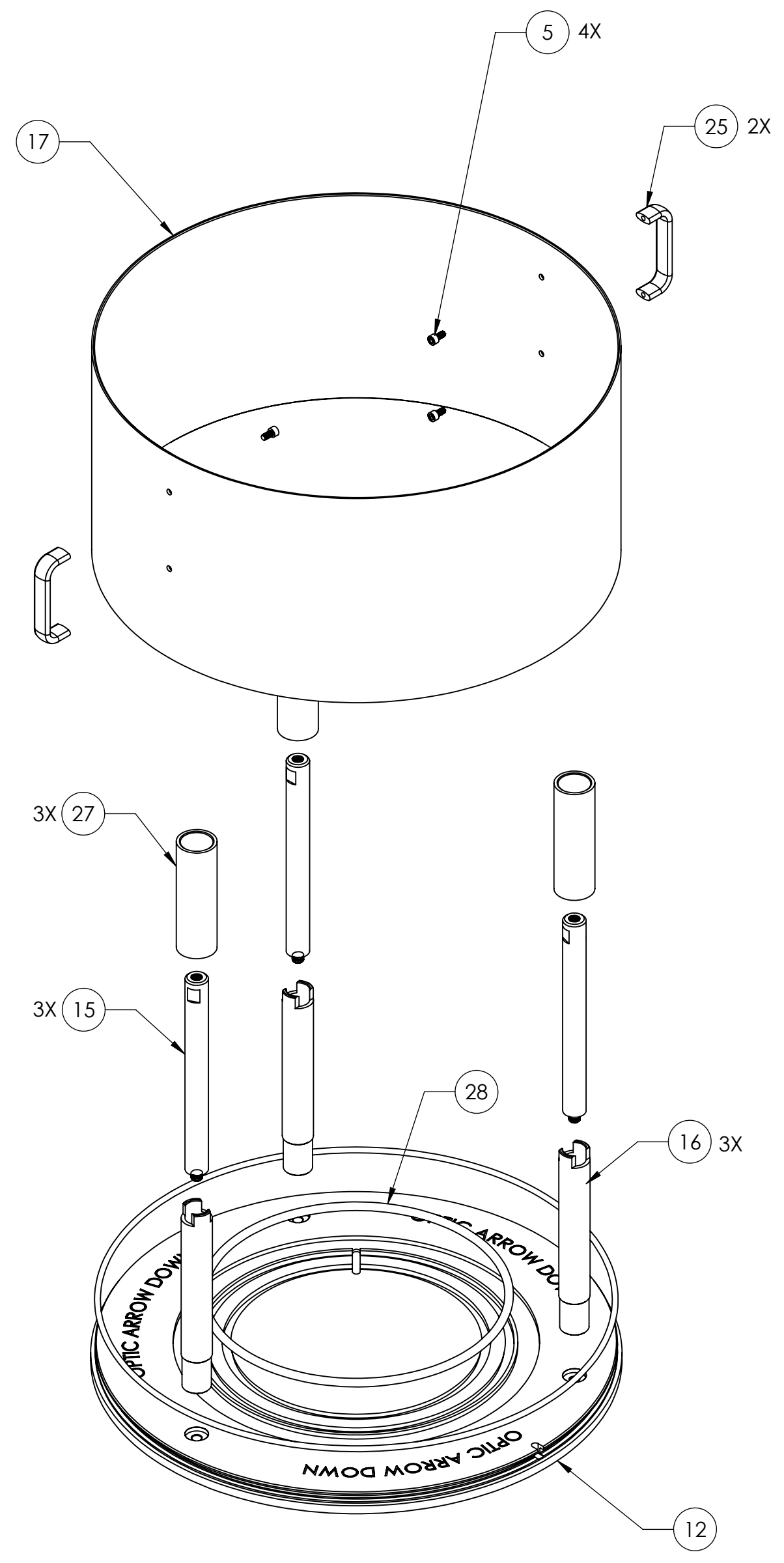
CHECKER K. MAILAND 8 OCT 2009

APPROVAL C. TORRIE 8 OCT 2009 SCALE: 1:4 PROJECTION: SHEET 1 OF 4




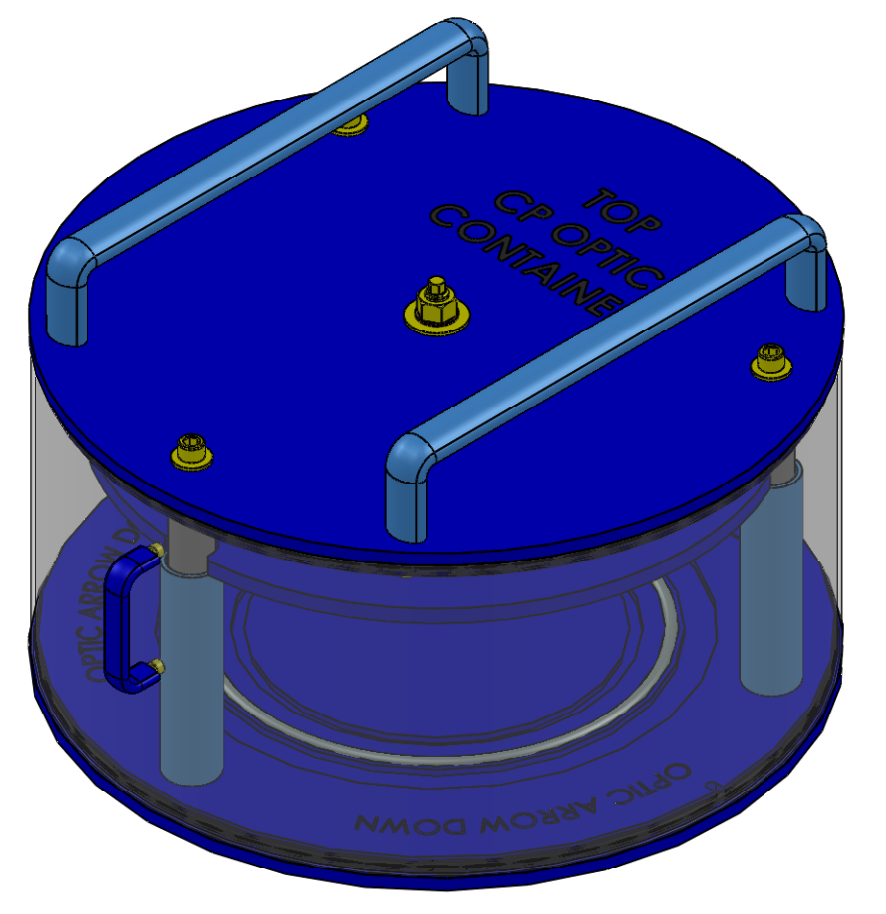
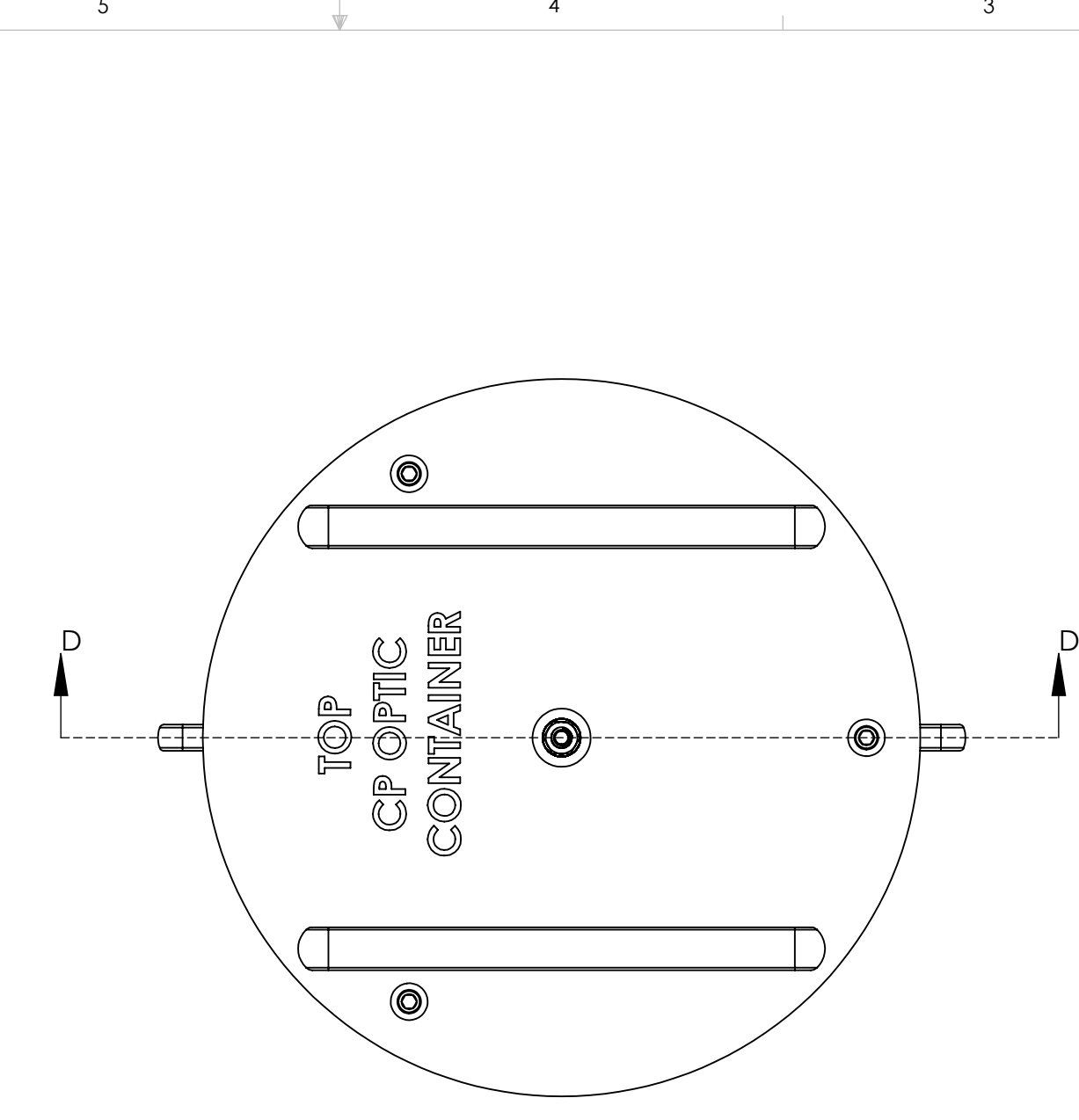
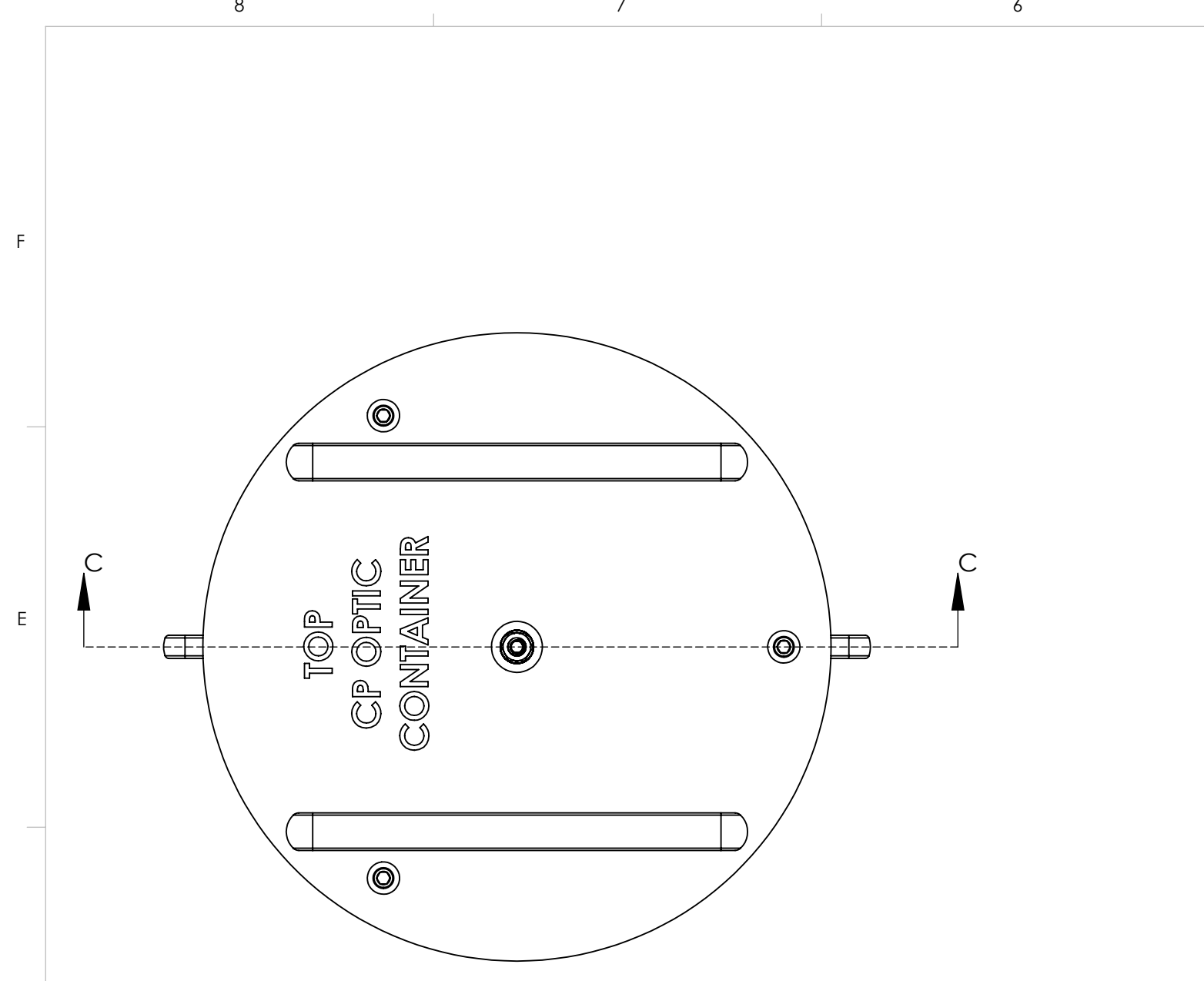
CP OPTIC CONTAINER ASSEMBLY

 CALIFORNIA INSTITUTE OF TECHNOLOGY MASSACHUSETTS INSTITUTE OF TECHNOLOGY		
SIZE C	DWG. NO. D0902001	REV. v7
SCALE: 1:4	PROJECTION: 	SHEET 2 OF 4

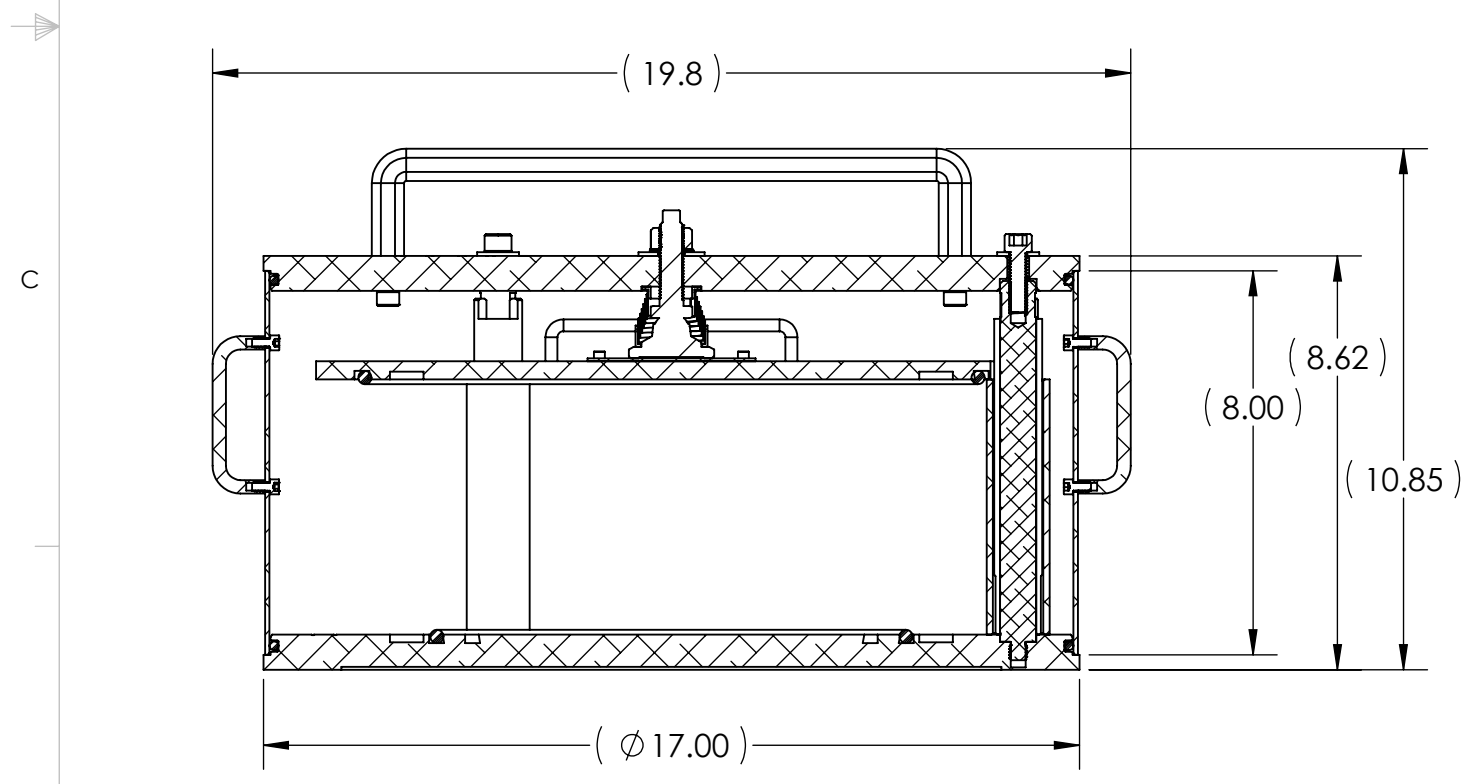


TCP OPTIC CONTAINER ASSEMBLY

 CALIFORNIA INSTITUTE OF TECHNOLOGY MASSACHUSETTS INSTITUTE OF TECHNOLOGY		REV.
SIZE	DWG. NO.	v7
C	D0902001	
SCALE: 1:4	PROJECTION:	SHEET 3 OF 4

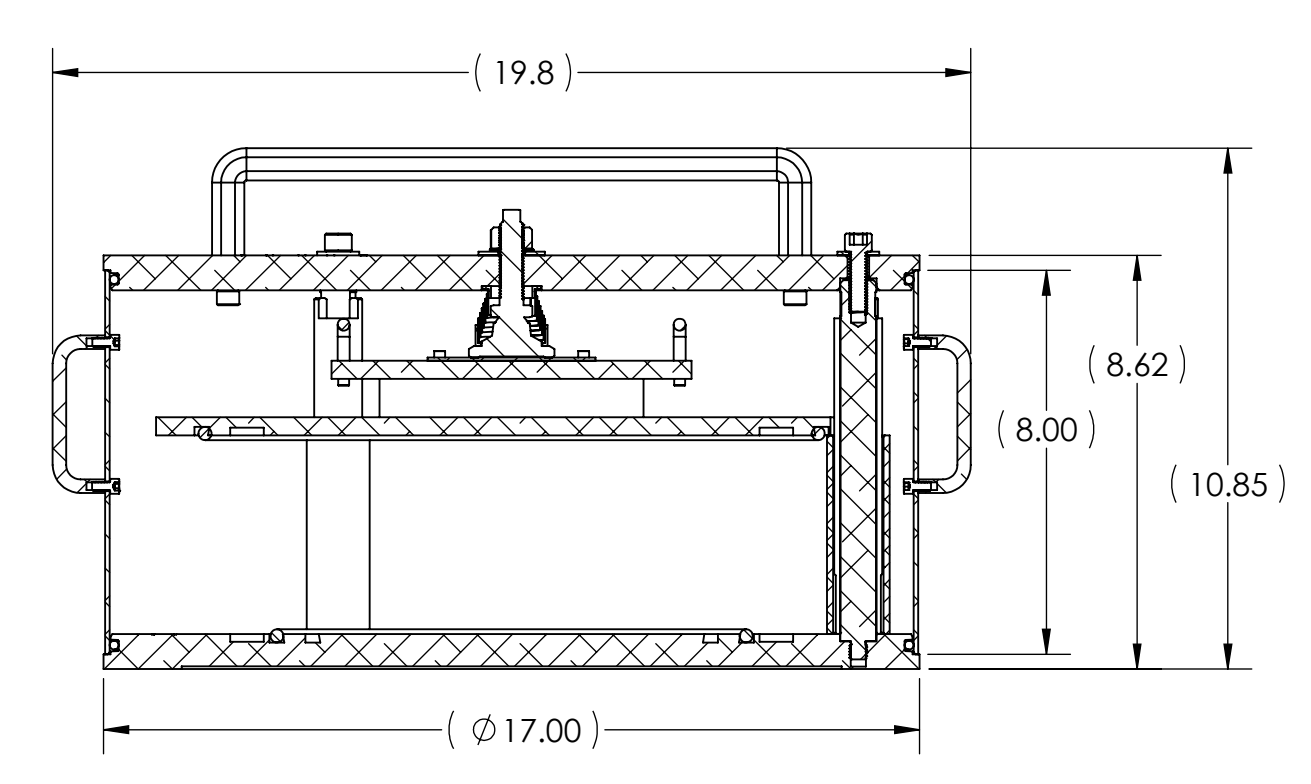


CP OPTIC ASSEMBLY SHOWN



SECTION C-C

CP OPTICCONTAINER ASSEMBLY



SECTION D-D

TCP OPTIC CONTAINER ASSEMBLY

LIGO CALIFORNIA INSTITUTE OF TECHNOLOGY MASSACHUSETTS INSTITUTE OF TECHNOLOGY		SIZE C	DWG. NO. D0902001	REV. v7
SCALE: 1:4	PROJECTION:			SHEET 4 OF 4