

SCALE 1:5

NOTES: (UNLESS OTHERWISE SPECIFIED)

- REMOVE ALL SHARP EDGES. R.02 MIN.
- DO NOT SCALE FROM DRAWING.
- ALL MACHINING FLUIDS SHALL BE WATER SOLUBLE AND FREE OF SULFUR, CHLORINE AND SILICONE, SUCH AS CINCINNATI MILACRON'S CIMTECH 410 (STAINLESS STEEL).
- SCRIBE, ENGRAVE OR STAMP DRAWING PART NUMBER ON NOTED SURFACE OF PART AND A THREE DIGIT SERIAL NUMBER. SERIAL NUMBERS START AT 001 FOR THE FIRST PART AND PROCEED CONSECUTIVELY. USE 07* HIGH CHARACTERS. EXAMPLE: 000100-001 - A VIBRATORY TOOL MAY BE USED.

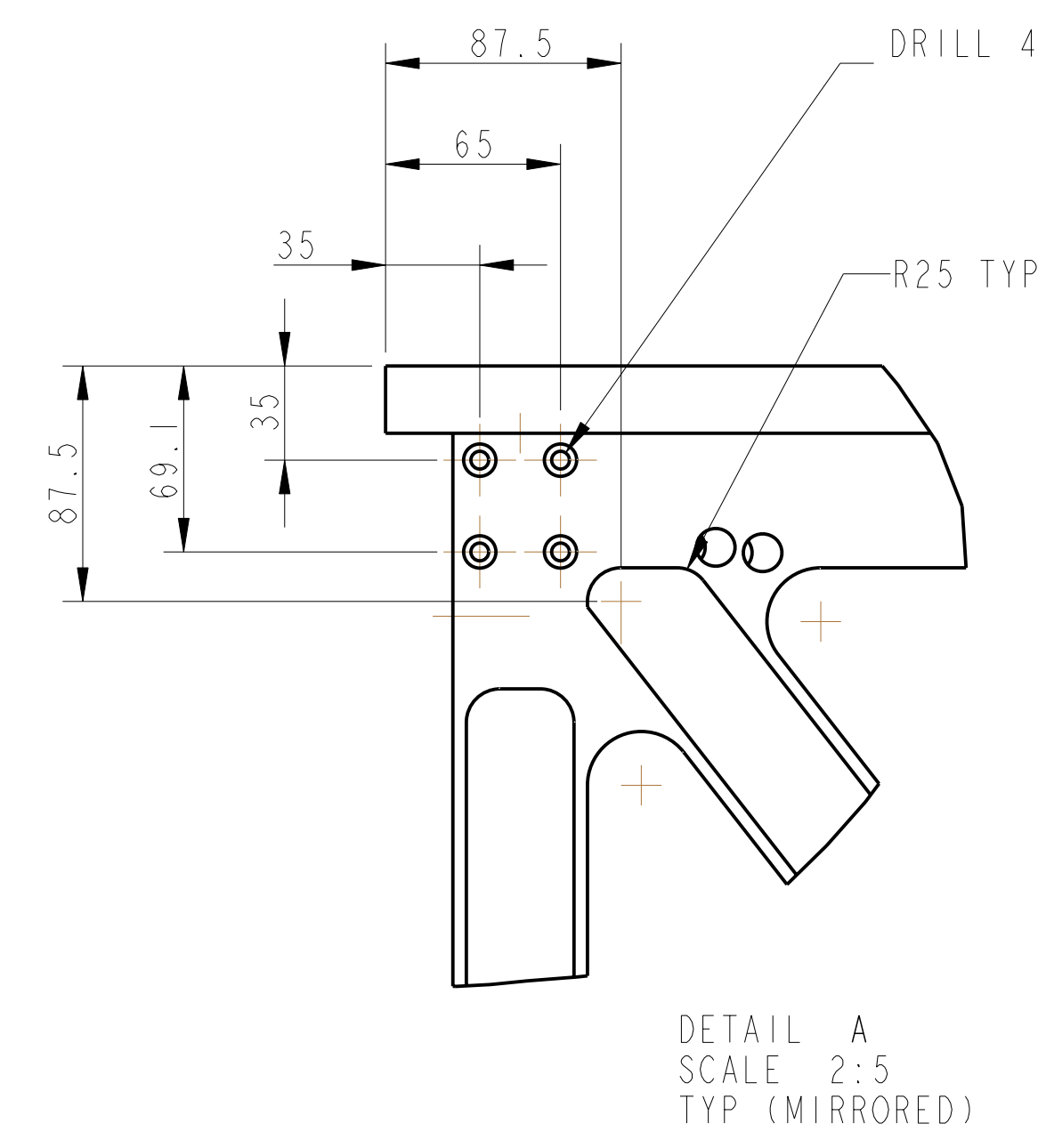
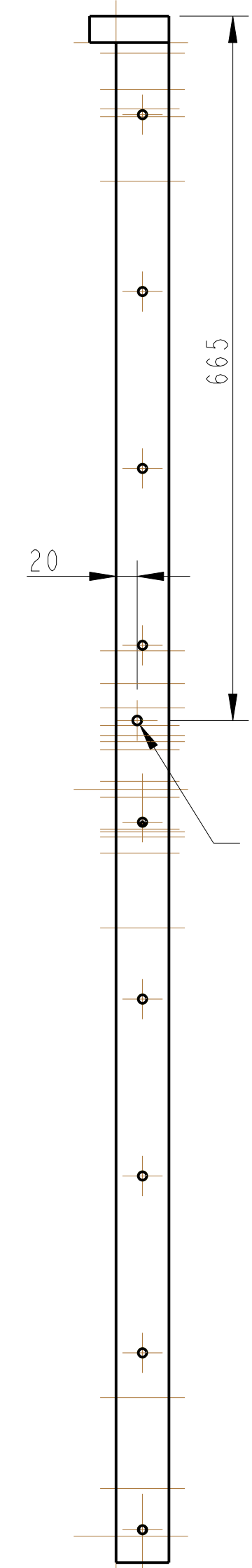
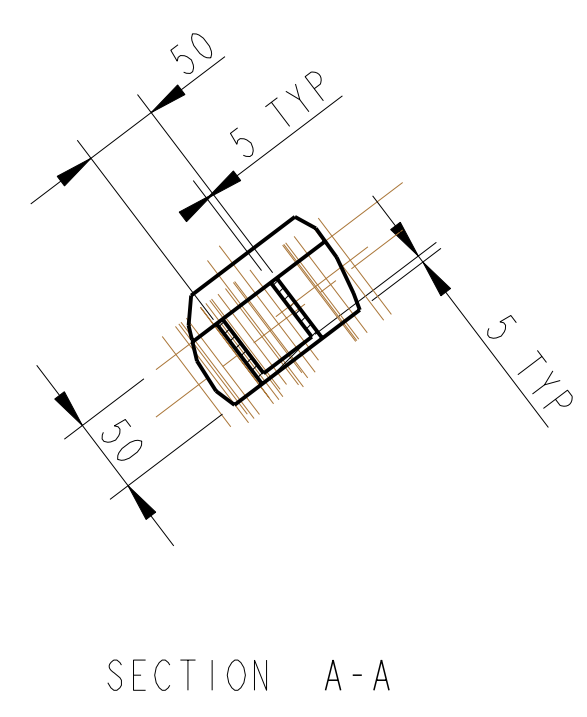
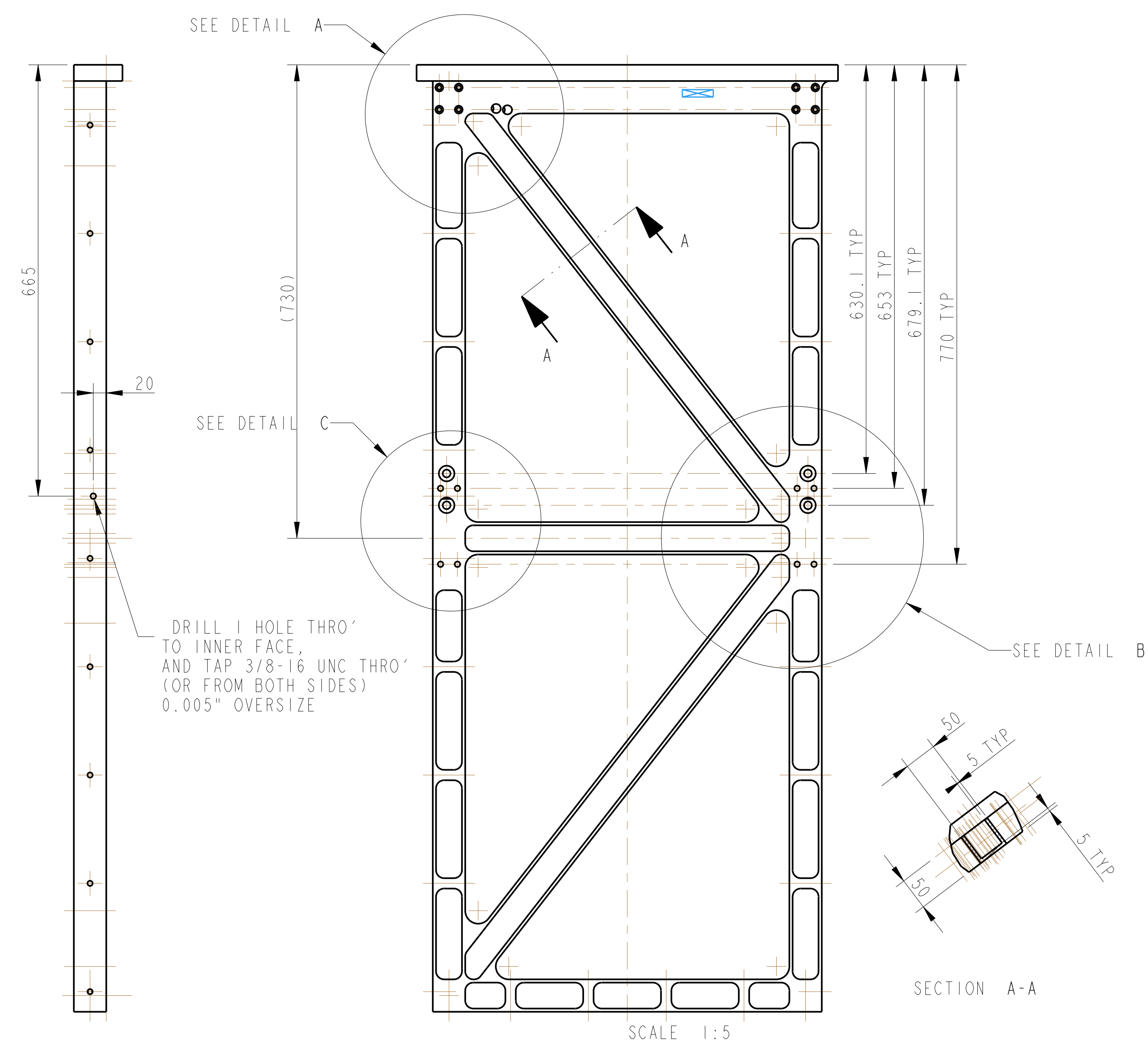
DIMENSIONS ARE IN mm (INCHES) TOLERANCES:
X XX ± 0.2
ANGULAR ±0.25 °

MATERIAL: AL ALLOY R05C16
FINISH: CLEAN
Ra = 1.6
√μm (μin)

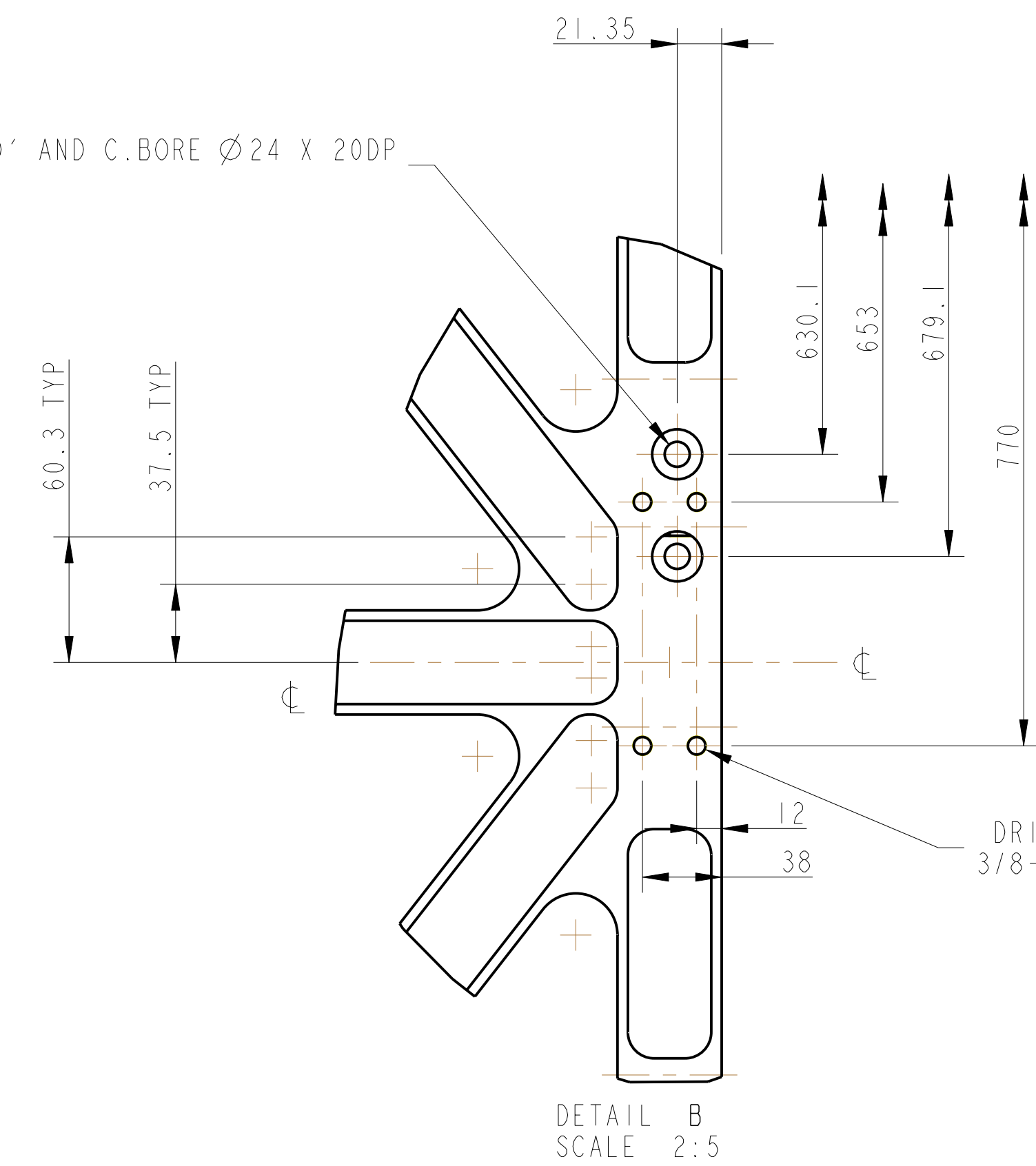
NAME DATE
DRAWN J. O'BELL 01/SEP/08
CHECKED AJB OCT 08
APPROVED JOD

CALIFORNIA INSTITUTE OF TECHNOLOGY
MASSACHUSETTS INSTITUTE OF TECHNOLOGY
GLASGOW UNIVERSITY GEC ROX GROUP
RUTHERFORD APPLTON LABORATORIES

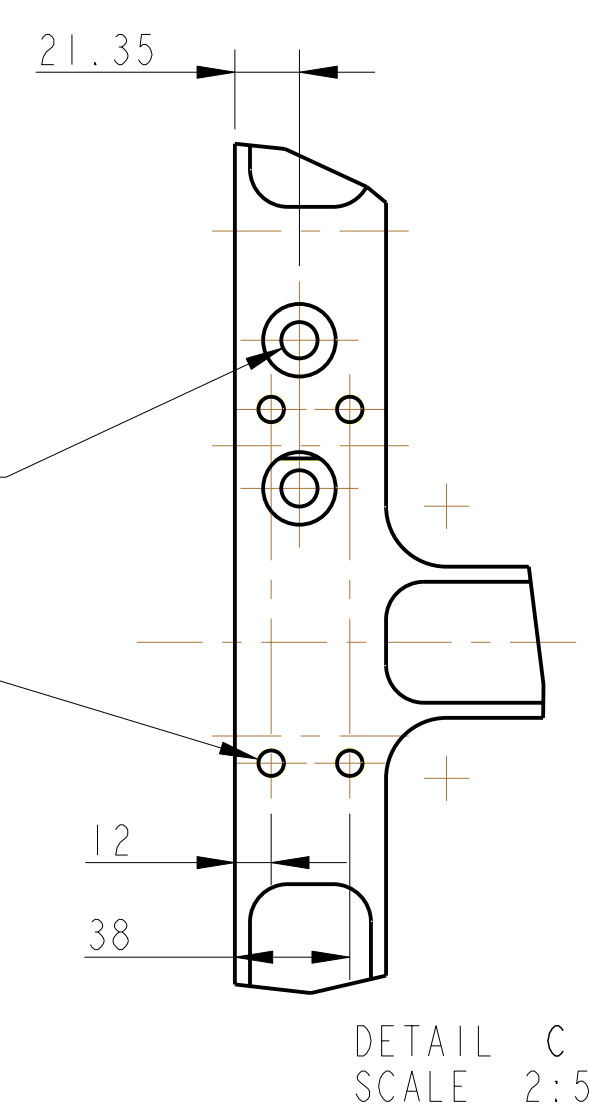
SYSTEM ADVANCED LIGO
SUB-SYSTEM SUS
NEXT ASSY BS UPPER STRUCTURE
PART NAME BEAM SPLITTER UPPER STRUCTURE FACE PLATE
DRG. NO. D080502
SCALE 1:1 PROJECTION



DRILL 2 HOLES Ø12 THRO' AND C.BORE Ø24 X 20DP



DRILL 4 HOLES THRO' AND TAP 3/8-16 UNC X 25 DP 0.005\"/>



NOTES: (UNLESS OTHERWISE SPECIFIED)

- REMOVE ALL SHARP EDGES. R.02 MIN.
- DO NOT SCALE FROM DRAWING.
- ALL MACHINING FLUIDS SHALL BE WATER SOLUBLE AND FREE OF SULFUR, CHLORINE AND SILICONE. SUCH AS CINCINNATI MILACRON'S CIMTECH 410 (STAINLESS STEEL).
- SCRIBE, ENGRAVE OR STAMP DRAWING PART NUMBER ON NOTED SURFACE OF PART AND A THREE DIGIT SERIAL NUMBER. SERIAL NUMBERS START AT 001 FOR THE FIRST PART AND PROCEED CONSECUTIVELY. USE 07* HIGH CHARACTERS. EXAMPLE: D080502-001 - A VIBRATORY TOOL MAY BE USED.

DIMENSIONS ARE IN mm (INCHES) TOLERANCES:

X.XX ± 0.2 ANGLULAR ±0.25 °

MATERIAL: AL ALLOY R052 16

FINISH: CLEAN Ra = 1.6

NAME	DATE
DRAWN J.O'BELL	OCT 08
CHECKED A.J.B	OCT 08
APPROVED J.O.D	

SCALE 1:1 PROJECTION: 1st Angle

CALIFORNIA INSTITUTE OF TECHNOLOGY	GLASGOW UNIVERSITY
ADVANCED LIGO	SUS
BS UPPER STRUCTURE	FACE PLATE

DRG. NO. D080502

SHEET 2 OF 2