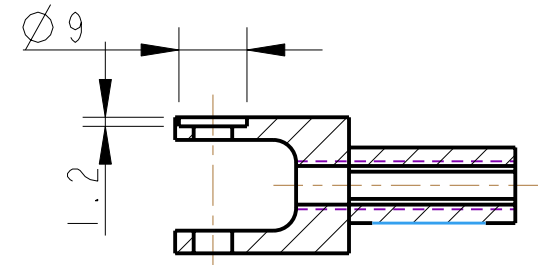
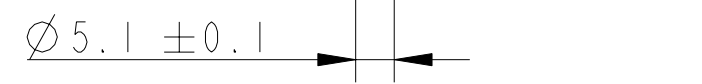


| | | | |
|------|------|-------|----------------|
| REV. | DATE | DCN # | DRAWING TREE # |
| | | | |

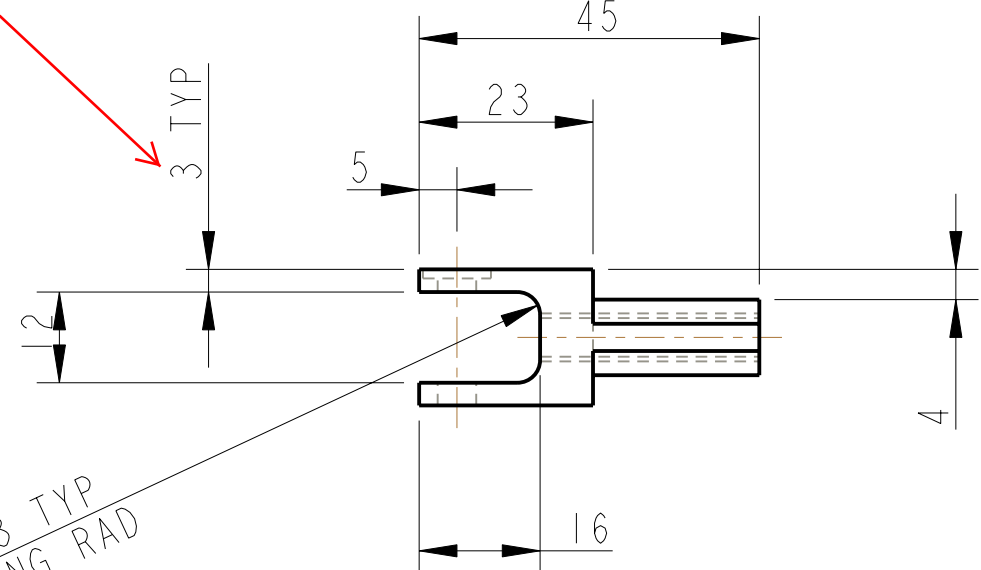


SECTION A-A

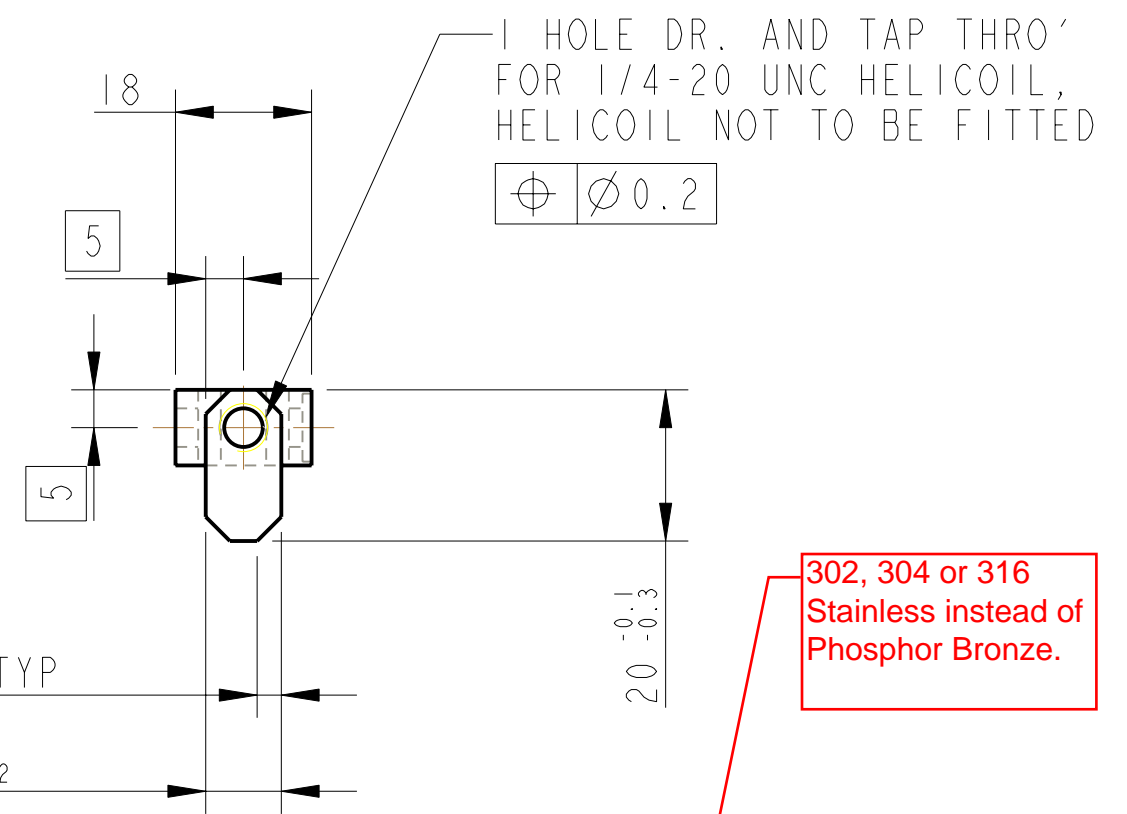
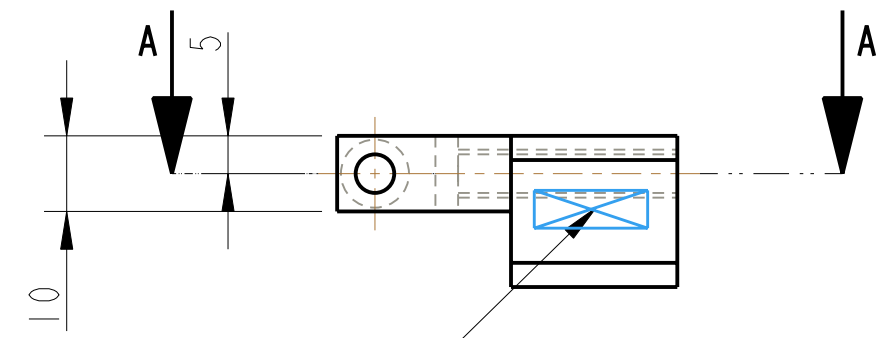


Change from 3mm TYP to 2.2mm TYP

Change from 12mm to 13.6mm



R3 TYP
MAX TOOLING RAD



302, 304 or 316 Stainless instead of Phosphor Bronze.

PART NO. (SEE NOTE 4) TO BE ETCHED OR STAMPED IN APPROX. POSITION SHOWN

contact info:
Janeen Romie
 LIGO Livingston Observatory
 Livingston, LA 70754
 225-686-3109
 e-mail - janeen@ligo-la.caltech.edu
 P638155

NOTES: (UNLESS OTHERWISE SPECIFIED)

- REMOVE ALL SHARP EDGES, R.02 MIN.
- DO NOT SCALE FROM DRAWING.
- ALL MACHINING FLUIDS SHALL BE WATER SOLUBLE AND FREE OF SULFUR, CHLORINE AND SILICONE, SUCH AS CINCINNATI MILACRON'S CIMTECH 410 (STAINLESS STEEL)
- SCRIBE, ENGRAVE OR STAMP DRAWING PART NUMBER ON NOTED SURFACE OF PART AND A THREE DIGIT SERIAL NUMBER. SERIAL NUMBERS START AT 001 FOR THE FIRST PART AND PROCEED CONSECUTIVELY. USE .07" HIGH CHARACTERS. EXAMPLE: D020188- 001. A VIBRATORY TOOL MAY BE USED.

| | |
|-------------------------------|--------------------|
| DIMENSIONS ARE IN mm [INCHES] | |
| TOLERANCES: | |
| X.XX ±0.2 mm | |
| ANGULAR ±0.25° | |
| MATERIAL: | PH.BRONZE PB2 |
| FINISH: | CLEAN, GREASE FREE |
| √μm [μin] | Ro = 1.6 |
| DRAWN | REV/FEL 21/12/07 |
| CHECKED | J'OD DEC/07 |
| APPROVED | IW DEC/07 |

| | |
|--|--------------------------------------|
| CALIFORNIA INSTITUTE OF TECHNOLOGY MASSACHUSETTS INSTITUTE OF TECHNOLOGY IGR, GLASGOW UNIVERSITY GEO 600 GROUP RUTHERFORD APPLETON LABORATORIES | |
| SYSTEM | ADVANCED LIGO |
| SUB-SYSTEM | SUS |
| NEXT ASSY | D080080 |
| PART NAME | BLADE TIP STOP MOUNT BS TOP STAGE |
| SIZE | B |
| DRG. NO. | D080090 |
| SCALE | 1:1 |
| PROJECTION | |
| REV | V2 |