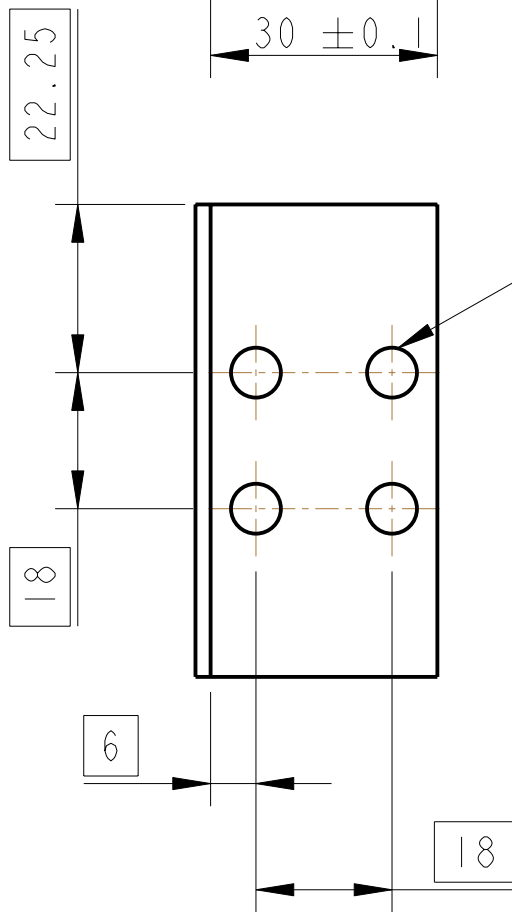
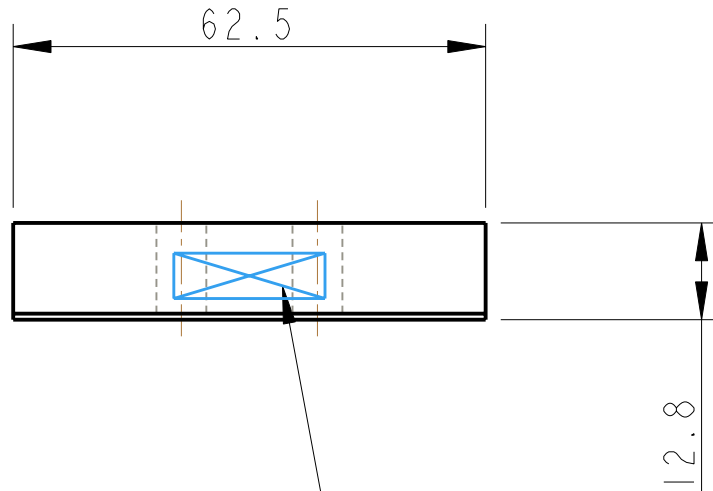
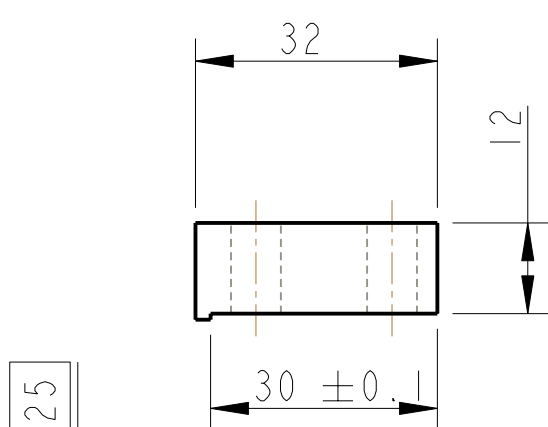
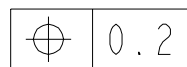


REV.	DATE	DCN #	DRAWING TREE #



4 HOLES  $\varnothing 6.7$  THRO'



PART NO. (SEE NOTE 4) TO BE ETCHED OR STAMPED IN APPROX. POSITION SHOWN

NOTES: (UNLESS OTHERWISE SPECIFIED)

- REMOVE ALL SHARP EDGES, R.02 MIN.
- DO NOT SCALE FROM DRAWING.
- ALL MACHINING FLUIDS SHALL BE WATER SOLUBLE AND FREE OF SULFUR, CHLORINE AND SILICONE, SUCH AS CINCINNATI MILACRON'S CIMTECH 410 (STAINLESS STEEL)
- SCRIBE, ENGRAVE OR STAMP DRAWING PARTNUMBER ON NOTED SURFACE OF PART AND A THREE DIGIT SERIAL NUMBER. SERIAL NUMBERS START AT 001 FOR THE FIRST PART AND PROCEED CONSECUTIVELY. USE .07" HIGH CHARACTERS. EXAMPLE: D020188- 001. A VIBRATORY TOOL MAY BE USED.

DIMENSIONS ARE IN mm [INCHES]  
TOLERANCES:

X.XX ± 0.2 mm  
ANGULAR ± 0.25 °

MATERIAL: ST. STEEL  
304-316

FINISH: CLEAN, GREASE FREE  
√μm [μin] Ra = 1.6

	NAME	DATE
DRAWN	REV/FEL	20/12/07
CHECKED	J'OD	DEC/07
APPROVED	IW	DEC/07



SYSTEM **ADVANCED LIGO**

SUB-SYSTEM **SUS**

NEXT ASSY **D080082**

PART NAME **BLADE CLAMP TOP  
BS TOP STAGE**

SIZE **A** DRG. NO. **D080084** REV **E**

SCALE 1:1 PROJECTION: SHEET 1 OF 1