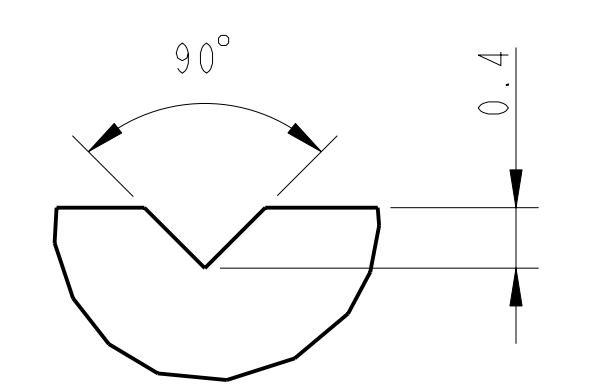
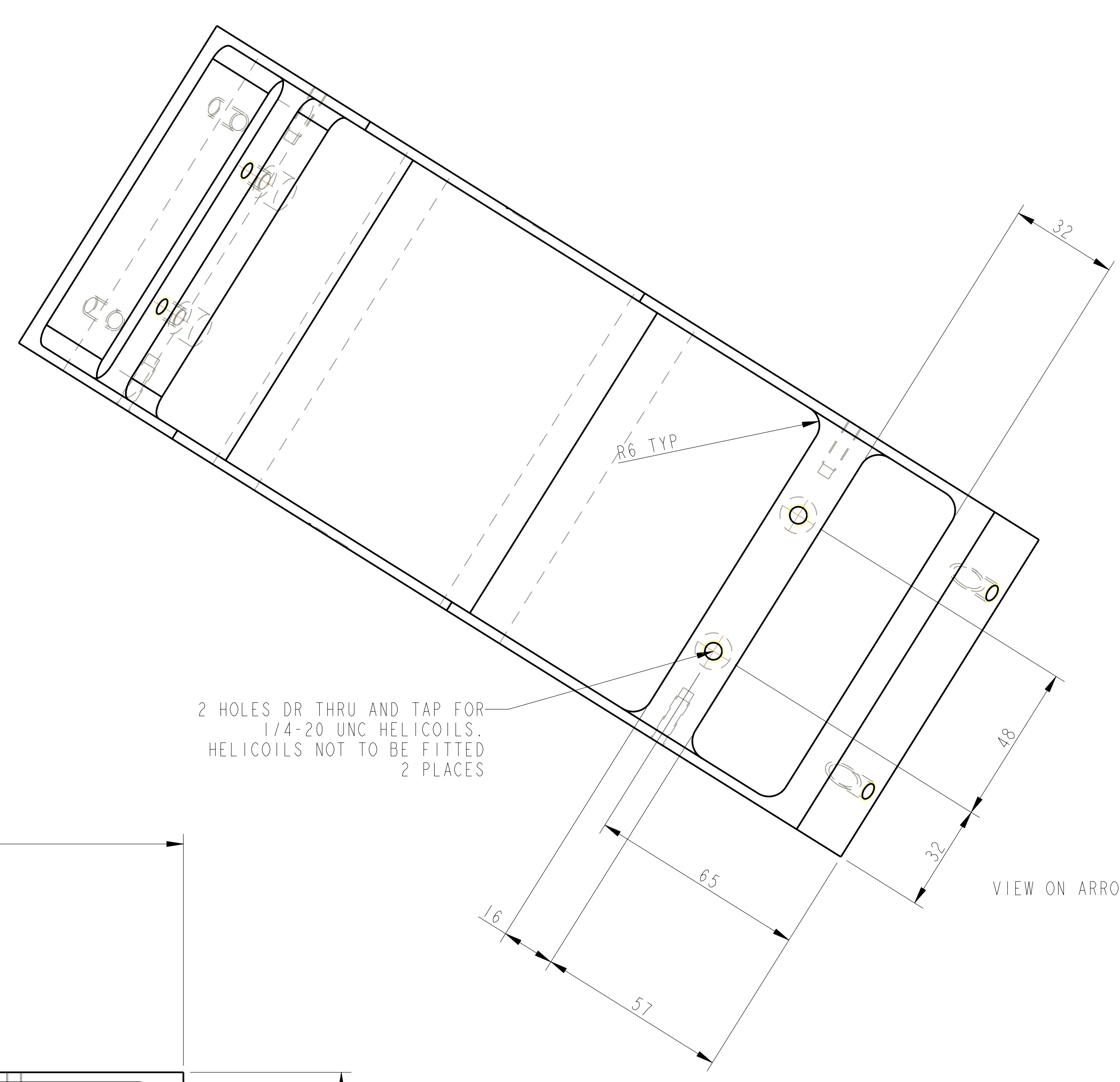


VIEW ON ARROW Y

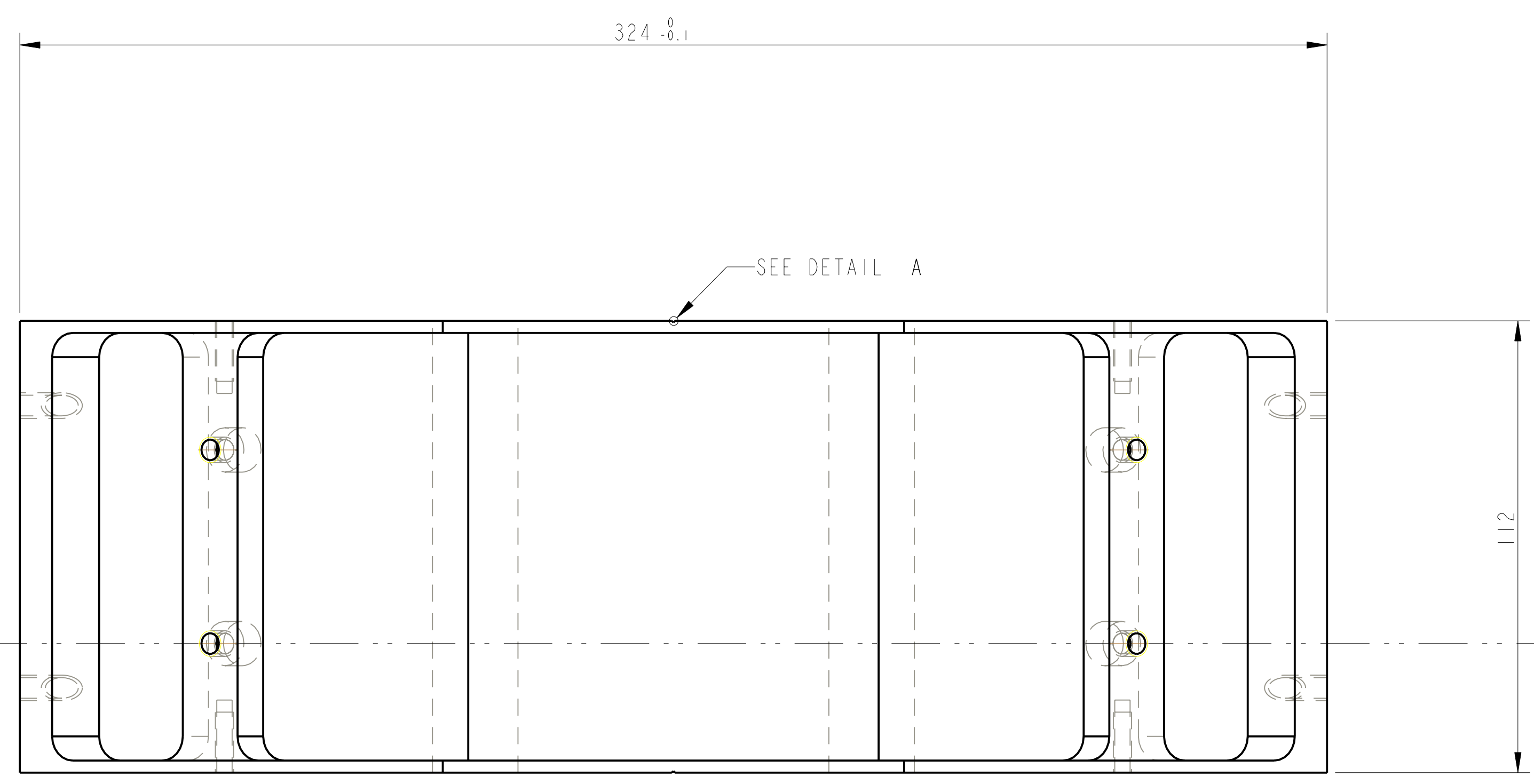


DETAIL A
SCALE: 20:1
2 POSITIONS

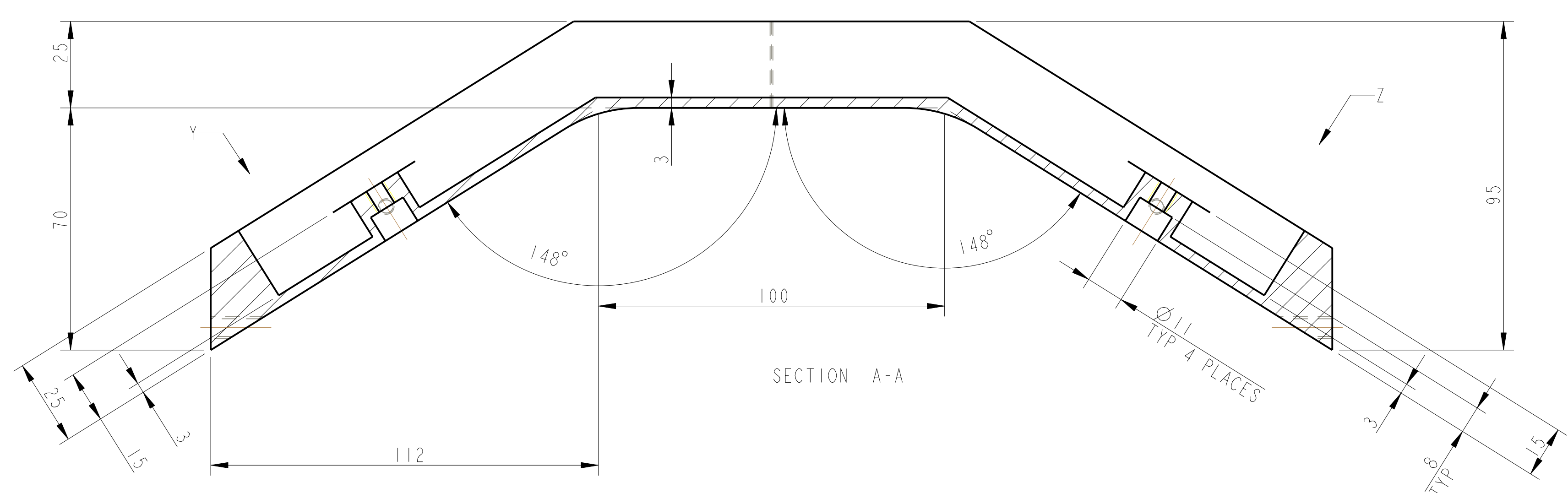
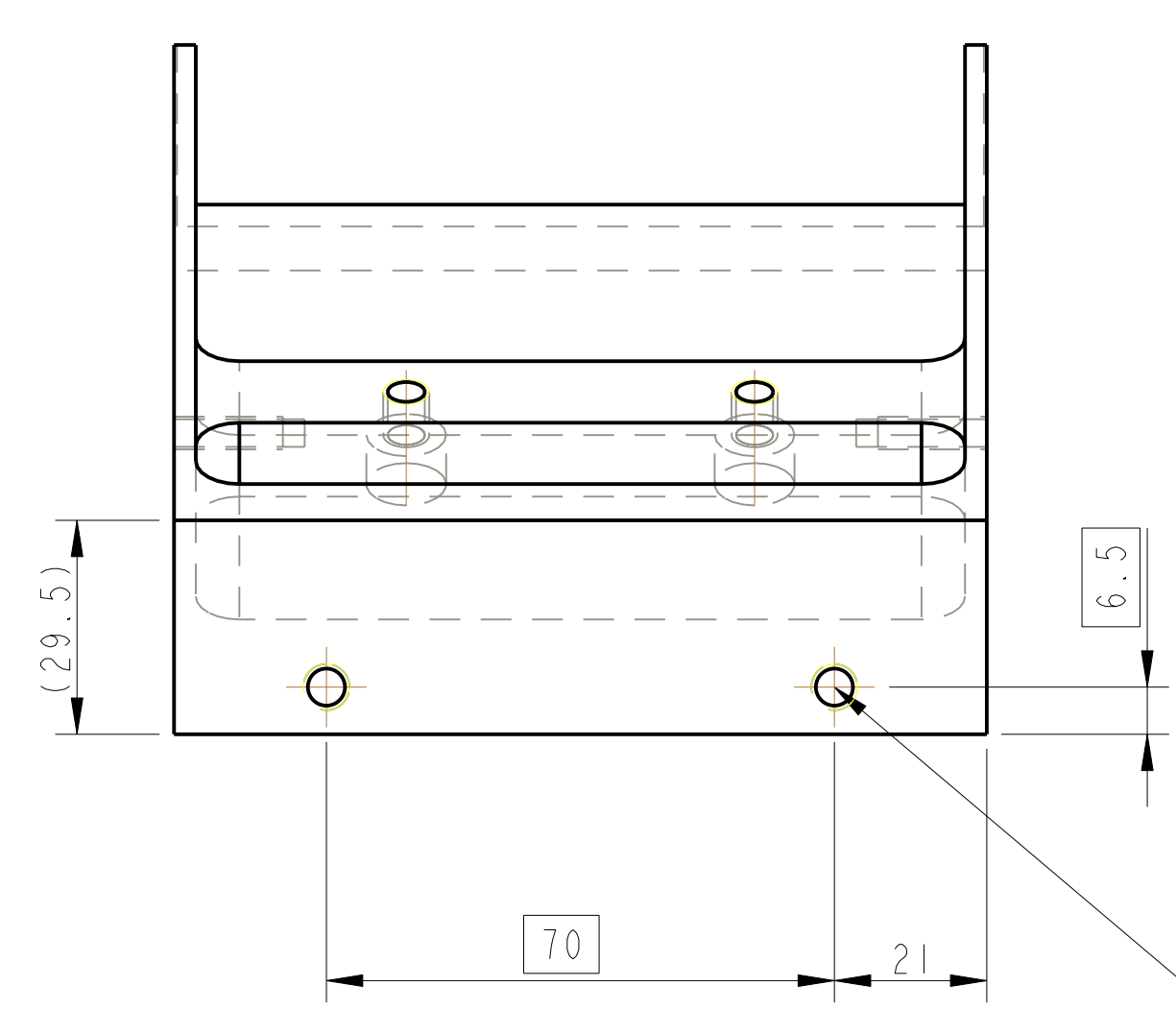


VIEW ON ARROW Z

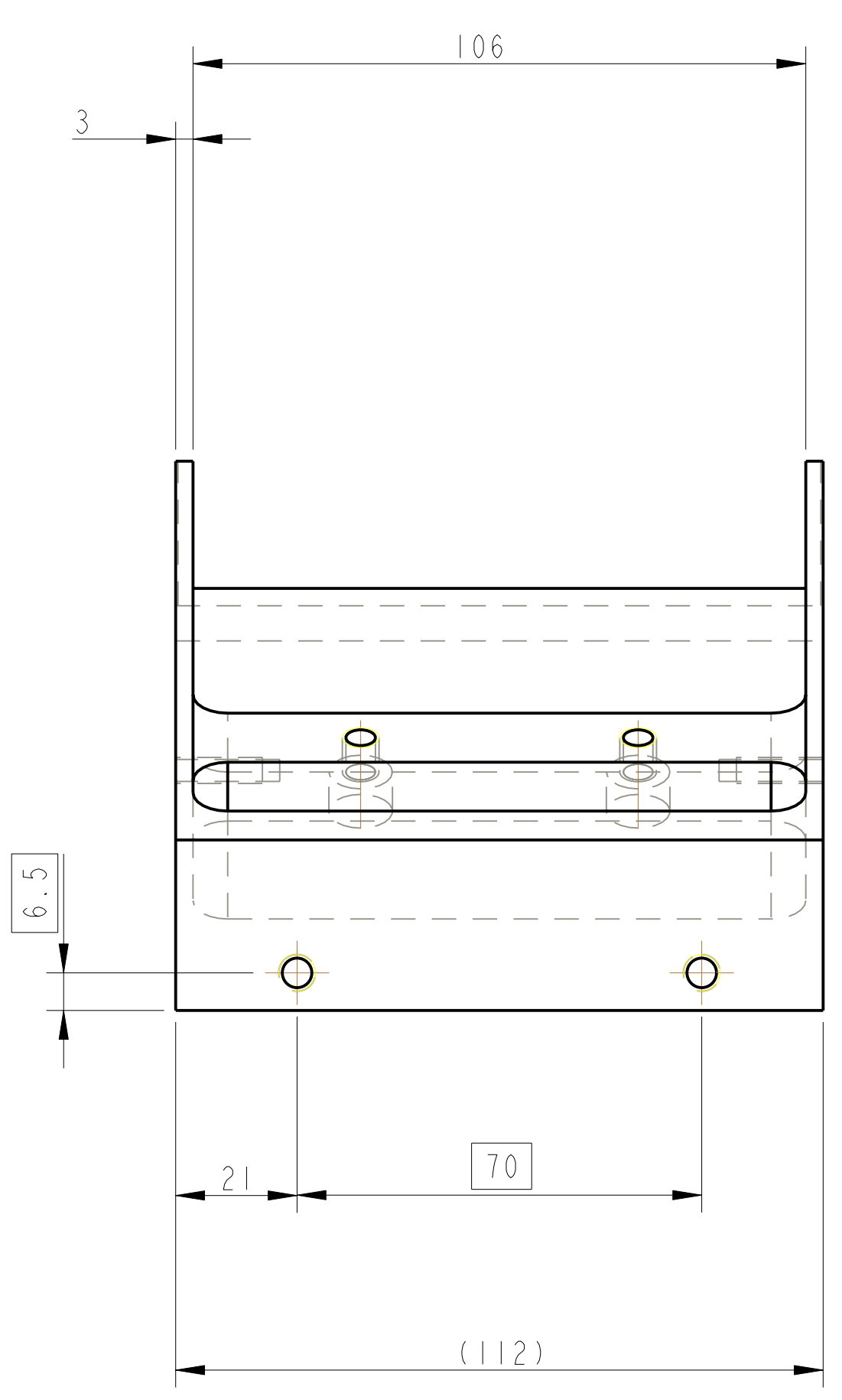
2 HOLES DR THRU AND TAP FOR
1/4-20 UNC HELICOILS.
HELICOILS NOT TO BE FITTED
2 PLACES



X



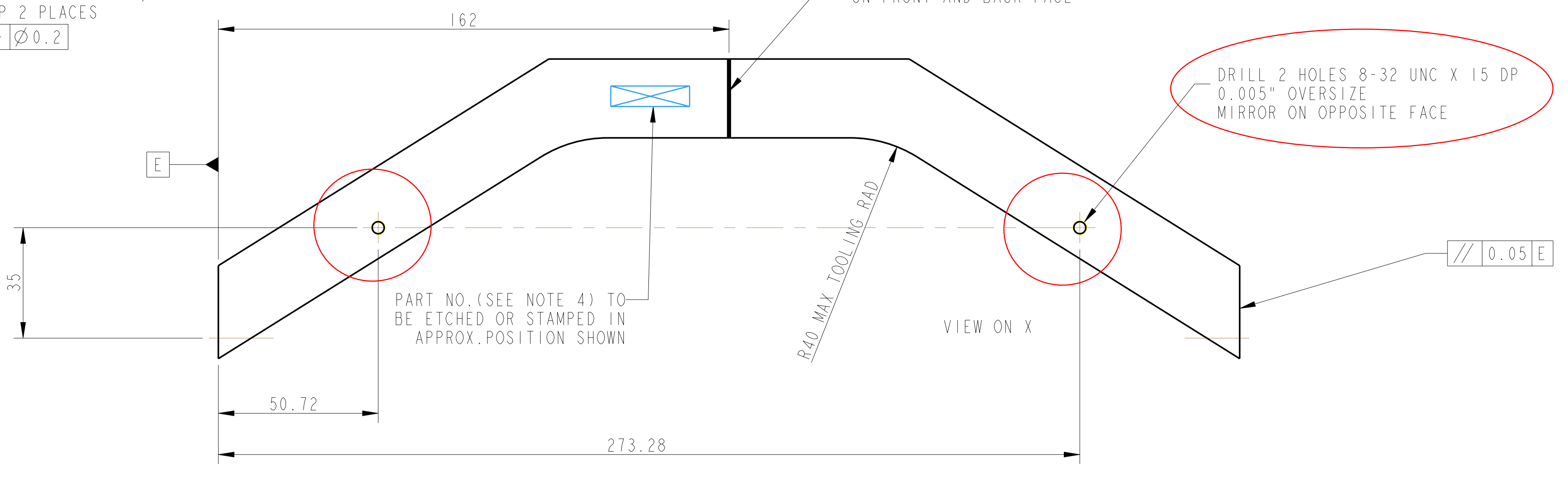
SECTION A-A



2 HOLES DR THRU &
TAP 1/4 - 20 UNC, 0.005" OVERSIZE
TYP 2 PLACES
Ø0.2

ENGRAVE CROSS-HAIR LINE,
ON FRONT AND BACK FACE

DRILL 2 HOLES 8-32 UNC X 15 DP
0.005" OVERSIZE
MIRROR ON OPPOSITE FACE



VIEW ON X

PART NO. (SEE NOTE 4) TO
BE ETCHED OR STAMPED IN
APPROX. POSITION SHOWN

NOTES: UNLESS OTHERWISE SPECIFIED:		CALIFORNIA INSTITUTE OF TECHNOLOGY	
1. REMOVE ALL SHARP EDGES.	2. DIMENSIONS ARE IN mm (INCHES)	CALIFORNIA INSTITUTE OF TECHNOLOGY	
3. DO NOT SCALE FROM DRAWING.	4. ALL WORKING DIMENSIONS SHALL BE	SYSTEM ADVANCED LIGO	
5. UNLESS OTHERWISE SPECIFIED, ALL DIMENSIONS SHALL BE	6. UNLESS OTHERWISE SPECIFIED, ALL DIMENSIONS SHALL BE	SUB-SYSTEM SUBS	
7. UNLESS OTHERWISE SPECIFIED, ALL DIMENSIONS SHALL BE	8. UNLESS OTHERWISE SPECIFIED, ALL DIMENSIONS SHALL BE	PART NAME BS LOWER STRUCTURE	
9. UNLESS OTHERWISE SPECIFIED, ALL DIMENSIONS SHALL BE	10. UNLESS OTHERWISE SPECIFIED, ALL DIMENSIONS SHALL BE	PART NO. LWR EQ STOP PLATE	
11. UNLESS OTHERWISE SPECIFIED, ALL DIMENSIONS SHALL BE	12. UNLESS OTHERWISE SPECIFIED, ALL DIMENSIONS SHALL BE	DATE 20080808	
13. UNLESS OTHERWISE SPECIFIED, ALL DIMENSIONS SHALL BE	14. UNLESS OTHERWISE SPECIFIED, ALL DIMENSIONS SHALL BE	DRAWN BY	
15. UNLESS OTHERWISE SPECIFIED, ALL DIMENSIONS SHALL BE	16. UNLESS OTHERWISE SPECIFIED, ALL DIMENSIONS SHALL BE	CHECKED BY	
17. UNLESS OTHERWISE SPECIFIED, ALL DIMENSIONS SHALL BE	18. UNLESS OTHERWISE SPECIFIED, ALL DIMENSIONS SHALL BE	APPROVED BY	
19. UNLESS OTHERWISE SPECIFIED, ALL DIMENSIONS SHALL BE	20. UNLESS OTHERWISE SPECIFIED, ALL DIMENSIONS SHALL BE	SCALE 1:1	
21. UNLESS OTHERWISE SPECIFIED, ALL DIMENSIONS SHALL BE	22. UNLESS OTHERWISE SPECIFIED, ALL DIMENSIONS SHALL BE	SHEET 1 OF 1	