

ITEM	QTY	SPARE	TOTAL	PART NUMBER	DESCRIPTION	MATERIALS
1	4			D060359-050	ADDITIONAL MASS; .	ST STEEL; 316
2	2			D060359-100	ADDITIONAL MASS; .	ST STEEL; 316
3	1			D060401	MAGNETIC PLUG; .	STAINLESS STEEL; 416
4	4			D060409	OSEM ECD UNIT; .	AS DRW; AS DRAWN
5	2			D060416	OSEM MAGNET AND FLAG; .	AS DRAWING;
6	1			D060418	MAGNET RETAINER; (MODIFIED 1/4-20 HEX HEAD)	STAINLESS STEEL; 304/316
7	1			D070422	BASE PLATE; BS TOP MASS	ST. STEEL; 304/316
8	1			D070424	PITCH ADJUSTER & MASS; BS TOP MASS	AS DRW;
9	4			D070428	STOP BRIDGE; BS TOP MASS	AL ALLOY; 5083
10	2			D070429	TOP MASS SPACER; BS TOP MASS	AL ALLOY; 5083 OR SIMILAR
11	2			D070430	TOP PLATE; BS TOP MASS	AL ALLOY; 5083 OR SIMILAR
12	2			D070432	BASE PLT WIRE CLAMP BODY; BS TOP MASS	ST. STEEL; 304/316
13	6			D070433	WIRE CLAMP JAW; BS MASSES	ST. STEEL; 304/316
14	4			D070434	STABILITY LEG; BS TOP MASS	AL ALLOY; 5083 OR SIMILAR
15	1			D070435	SKELDROO
16	2			D080042	BLADE CLAMP ASSY #1; BS TOP MASS
17	2			D080043	BLADE CLAMP ASSY #2; BS TOP MASS
18	1			D0901344	10MM DIA X 10MM MAGNET; .	AS PAR SPEC;
19	1			D1000392	BS ENVELOPE;
20	4				1/4" 20 UNC X 0.75" CAP HEAD SILVER PLATED; .	
21	18				1/4" 20 UNC X 1" CAP HEAD; .	
22	16				1/4" 20 UNC X 1" CAP HEAD SILVER PLATED; .	
23	8				1/4" 20 UNC X 2" CAP HEAD; .	
24	4				1/4" 20 UNC X 2" CAP HEAD SILVER PLATED; .	
25	4				1/4" 20 UNC X 2" CAP HEAD, SPHERICAL TIP; .	
26	4				1/4" 20 UNC NUT; .	
27	20				8-32 UNC X 0.625" CAP HEAD; .	
28	1				BS ENVELOPE; .	
29	4				:: BS TOP MASS	

NOTES: (UNLESS OTHERWISE SPECIFIED)

- REMOVE ALL SHARP EDGES. R.02 MIN.
- DO NOT SCALE FROM DRAWING.
- ALL MACHINING FLUIDS SHALL BE WATER SOLUBLE AND FREE OF SULFUR, CHLORINE AND SILICONE. SUCH AS CINCINNATI MILACRON'S CIMTECH 410 (STAINLESS STEEL).
- SCRIBE, ENGRAVE OR STAMP DRAWING PART NUMBER ON NOTED SURFACE OF PART AND A THREE DIGIT SERIAL NUMBER. SERIAL NUMBERS START AT 001 FOR THE FIRST PART AND PROCEED CONSECUTIVELY. USE 07" HIGH CHARACTERS. EXAMPLE: D060100-001 - A VIBRATOR TOOL MAY BE USED.

DIMENSIONS ARE IN mm (INCHES) TOLERANCES:

X .XX ± .13 ANGLE ± FALSE °

MATERIAL: AS DRW

FINISH: CLEAN, GREASE FREE

√μm (μIN) Ra = 1.6

NAME	DATE	SIZE
DRAWN J O'BELL	03/09/08	
CHECKED J'OOD	JAN 08	
APPROVED TW	JAN 08	

SCALE: 1:1 PROJECTION:

CALIFORNIA INSTITUTE OF TECHNOLOGY
 MASSACHUSETTS INSTITUTE OF TECHNOLOGY
 RUTGERS UNIVERSITY
 RUTHERFORD APPLIION LABORATORIES

SYSTEM: **ADVANCED LIGO**

SUB-SYSTEM: **SUS**

NEXT ASSY: **THIS**

PART NAME: **BS TOP MASS**

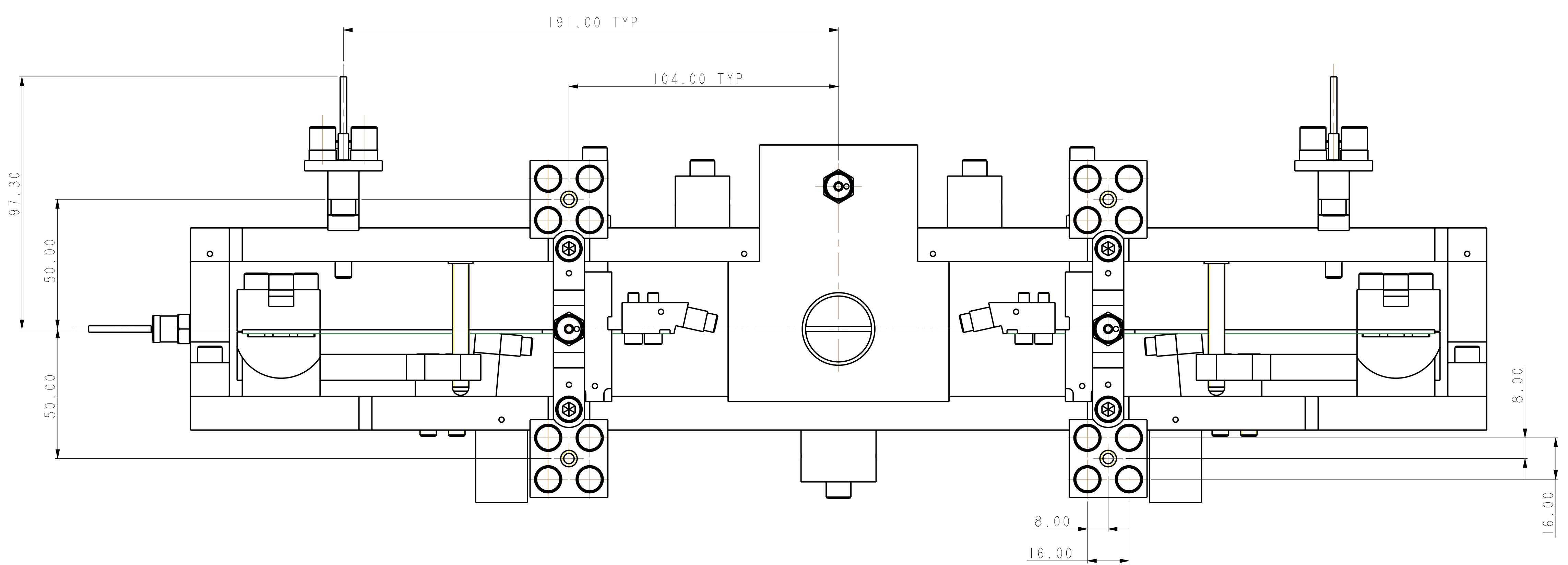
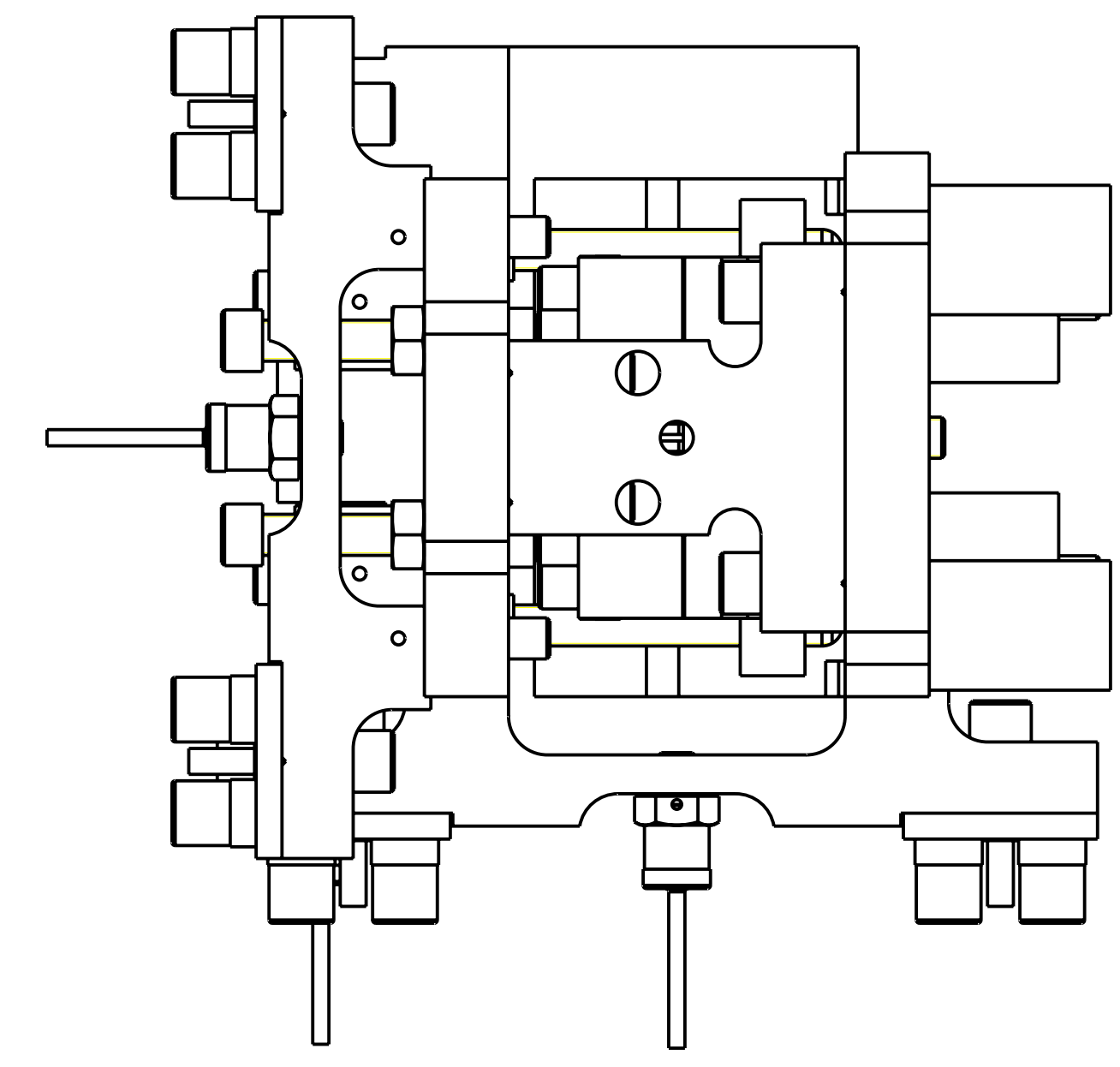
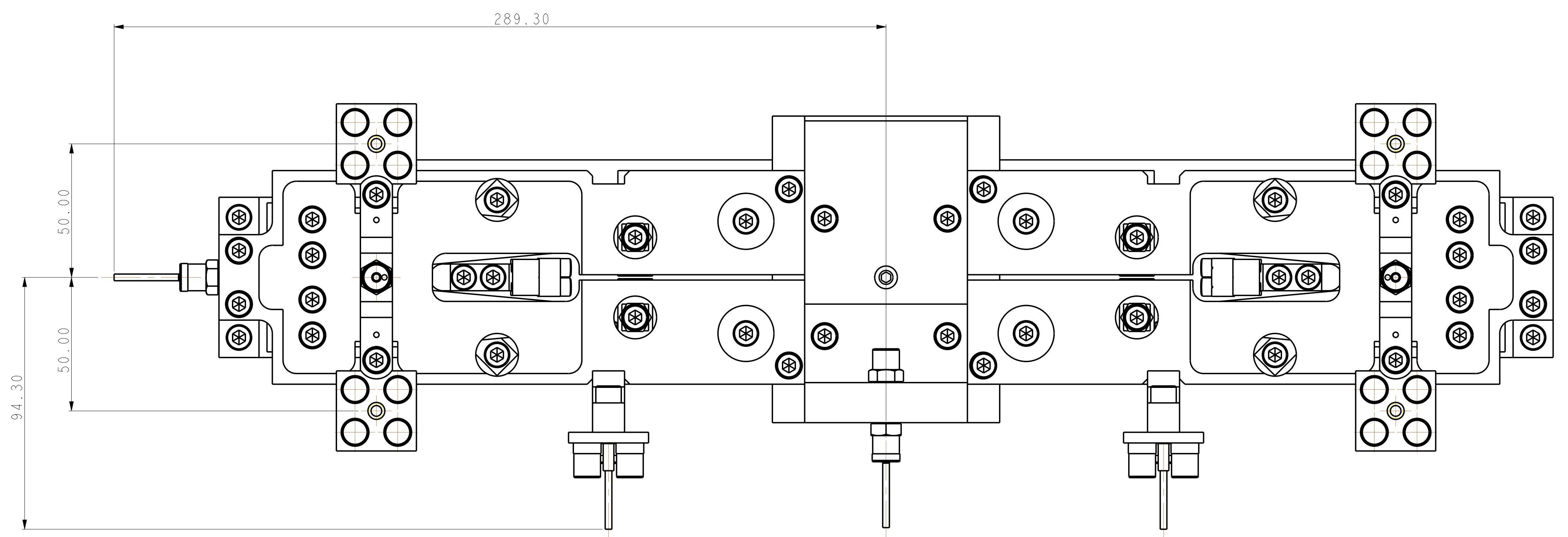
BS TRIPPLE

DRG. NO.: **D070435**

DATE: **JAN 08**

APPROVED: **FW**

SHEET 1 OF 2



ITEM	QTY	SPARE	TOTAL	PART NUMBER	DESCRIPTION	MATERIALS
1	4			D060359-050	ADDITIONAL MASS; . . .	ST STEEL; 316
2	2			D060359-100	ADDITIONAL MASS; . . .	ST STEEL; 316
3	1			D060401	MAGNETIC PLUG; . . .	STAINLESS STEEL; 416
4	4			D060409	OSEM ECO UNIT; . . .	AS DRW; AS DRAWN
5	2			D060416	OSEM MAGNET AND FLAG; . . .	AS DRAWING; . . .
6	1			D060418	MAGNET RETAINER; (MODIFIED 1/4-20 HEX HEAD)	STAINLESS STEEL; 304/316
7	1			D070422	BASE PLATE; BS TOP MASS	ST. STEEL; 304/316
8	1			D070424	PITCH ADJUSTER & MASS; BS TOP MASS	AS DRW; . . .
9	4			D070428	STOP BRIDGE; BS TOP MASS	AL ALLOY; 5083
10	2			D070429	TOP MASS SPACER; BS TOP MASS	AL ALLOY; 5083 OR SIMILAR
11	2			D070430	TOP PLATE; BS TOP MASS	AL ALLOY; 5083 OR SIMILAR
12	2			D070432	BASE PLT WIRE CLAMP BODY; BS TOP MASS	ST. STEEL; 304/316
13	6			D070433	WIRE CLAMP JAW; BS MASSES	ST. STEEL; 304/316
14	4			D070434	STABILITY LEG; BS TOP MASS	AL ALLOY; 5083 OR SIMILAR
15	1			D070435	SKEL0001	. . .
16	2			D080042	BLADE CLAMP ASSY #1; BS TOP MASS	. . .
17	2			D080043	BLADE CLAMP ASSY #2; BS TOP MASS	. . .
18	1			D0901344	10MM DIA X 10MM MAGNET; . . .	AS PAR SPEC; . . .
19	1			D1000392	BS ENVELOPE;
20	4				1/4" 20 UNC X 0.75" CAP HEAD SILVER PLATED; . . .	
21	18				1/4" 20 UNC X 1" CAP HEAD; . . .	
22	16				1/4" 20 UNC X 1" CAP HEAD SILVER PLATED; . . .	
23	8				1/4" 20 UNC X 2" CAP HEAD; . . .	
24	4				1/4" 20 UNC X 2" CAP HEAD SILVER PLATED; . . .	
25	4				1/4" 20 UNC X 2" CAP HEAD, SPHERICAL TIP; . . .	
26	4				1/4" 20 UNC NUT; . . .	
27	20				8-32 UNC X 0.625" CAP HEAD; . . .	
28	1				BS ENVELOPE; . . .	
29	4				. . . BS TOP MASS	

NOTES: (UNLESS OTHERWISE SPECIFIED)

- REMOVE ALL SHARP EDGES.
- DO NOT SCALE FROM DRAWING.
- ALL MACHINING FLUIDS SHALL BE WATER SOLUBLE AND FREE OF SULFUR, CHLORINE AND SILICONE. SUCH AS CINCINNATI MILACRON'S CIMTECH 410 (STAINLESS STEEL).
- SCRIBE, ENGRAVE OR STAMP DRAWING PART NUMBER ON NOTED SURFACE OF PART AND A THREE DIGIT SERIAL NUMBER. SERIAL NUMBERS START AT 001 FOR THE FIRST PART AND PROCEED CONSECUTIVELY. USE 07" HIGH CHARACTERS. EXAMPLE: D060100-101. A VIBRATOR TOOL MAY BE USED.

DIMENSIONS ARE IN MM (INCHES) TOLERANCES:

X XX ± .13 ANGLUAR ± FALSE °

MATERIAL: AS DRW

FINISH: CLEAN, GREASE FREE
 \sqrt{Ra} (UM) Ra = 1.6

DATE	BY	CHKD	APPD
25/05/10	J. O'BELL	J. O'BELL	J. O'BELL

SCALE: 1:1 PROJECTION: 1st ANGLE

CALIFORNIA INSTITUTE OF TECHNOLOGY
 MASSACHUSETTS INSTITUTE OF TECHNOLOGY
 GLASGOW UNIVERSITY GEC ROU GROUP
 RUTHERFORD APPLETON LABORATORIES

SYSTEM: **ADVANCED LIGO**

SUB-SYSTEM: **SUS**

NEXT ASSY: **THIS**

PART NAME: **BS TOP MASS**

BY: **BS TRIPPLE**

DRG. NO.: **D070435**

DATE: **JAN 08**

SCALE: 1:1 PROJECTION: 1st ANGLE

SHEET 2 OF 2