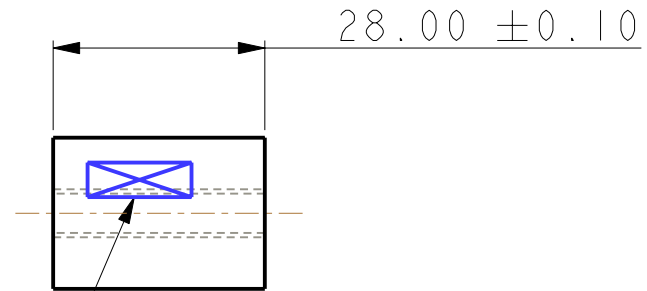
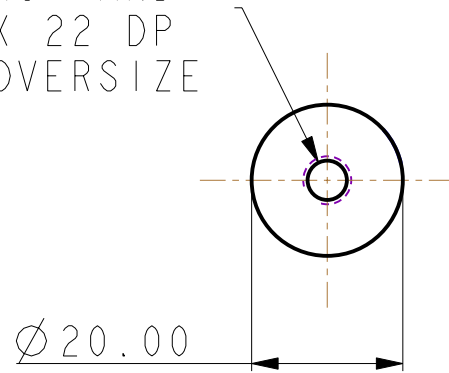




REV.	DATE	DCN #	DRAWING TREE #

DRILL THRO' AND
TAP 1/4-20 UNC X 22 DP
0.005" OVERSIZE



PART#(SEE NOTE 4) TO
BE ETCHED OR STAMPED I
APPROX, POSITION SHOWN

NOTES: (UNLESS OTHERWISE SPECIFIED)		 CALIFORNIA INSTITUTE OF TECHNOLOGY MASSACHUSETTS INSTITUTE OF TECHNOLOGY IGR, GLASGOW UNIVERSITY GEO 600 GROUP RUTHERFORD APPLETON LABORATORIES												
1. REMOVE ALL SHARP EDGES, R.02 MIN. 2. DO NOT SCALE FROM DRAWING. 3. ALL MACHINING FLUIDS SHALL BE WATER SOLUBLE AND FREE OF SULFUR, CHLORINE AND SILICONE, SUCH AS CINCINNATI MILACRON'S CIMTECH 410 (STAINLESS STEEL) 4. SCRIBE, ENGRAVE OR STAMP DRAWING PARTNUMBER ON NOTED SURFACE OF PART AND A THREE DIGIT SERIAL NUMBER. SERIAL NUMBERS START AT 001 FOR THE FIRST PART AND PROCEED CONSECUTIVELY. USE .07" HIGH CHARACTERS. EXAMPLE: D020188- 001. A VIBRATORY TOOL MAY BE USED.	DIMENSIONS ARE IN mm [INCHES] TOLERANCES: X.XX ±0.200 mm ° ANGULAR ±0.250 °		SYSTEM ADVANCED LIGO											
	MATERIAL: AL ALLOY 5083 OR SIMILAR		SUB-SYSTEM SUS											
	FINISH: CLEAN, GREASE FREE $\sqrt{\mu m}$ [μin] $R_a = 1.6$		NEXT ASSY D070435											
	<table border="1"> <thead> <tr> <th></th> <th>NAME</th> <th>DATE</th> </tr> </thead> <tbody> <tr> <td>DRAWN</td> <td>REV/FEL</td> <td>14/DEC/07</td> </tr> <tr> <td>CHECKED</td> <td>J'OD</td> <td>JAN 08</td> </tr> <tr> <td>APPROVED</td> <td>IW</td> <td>JAN 08</td> </tr> </tbody> </table>			NAME	DATE	DRAWN	REV/FEL	14/DEC/07	CHECKED	J'OD	JAN 08	APPROVED	IW	JAN 08
	NAME	DATE												
DRAWN	REV/FEL	14/DEC/07												
CHECKED	J'OD	JAN 08												
APPROVED	IW	JAN 08												
SIZE A DRG. NO. D070434			SCALE 1:1 PROJECTION:  SHEET 1 OF 1											