

2 HOLES DRILL AND TAP THRO' FOR 1/4-20 UNC HELICOILS, HELICOILS NOT TO BE FITTED

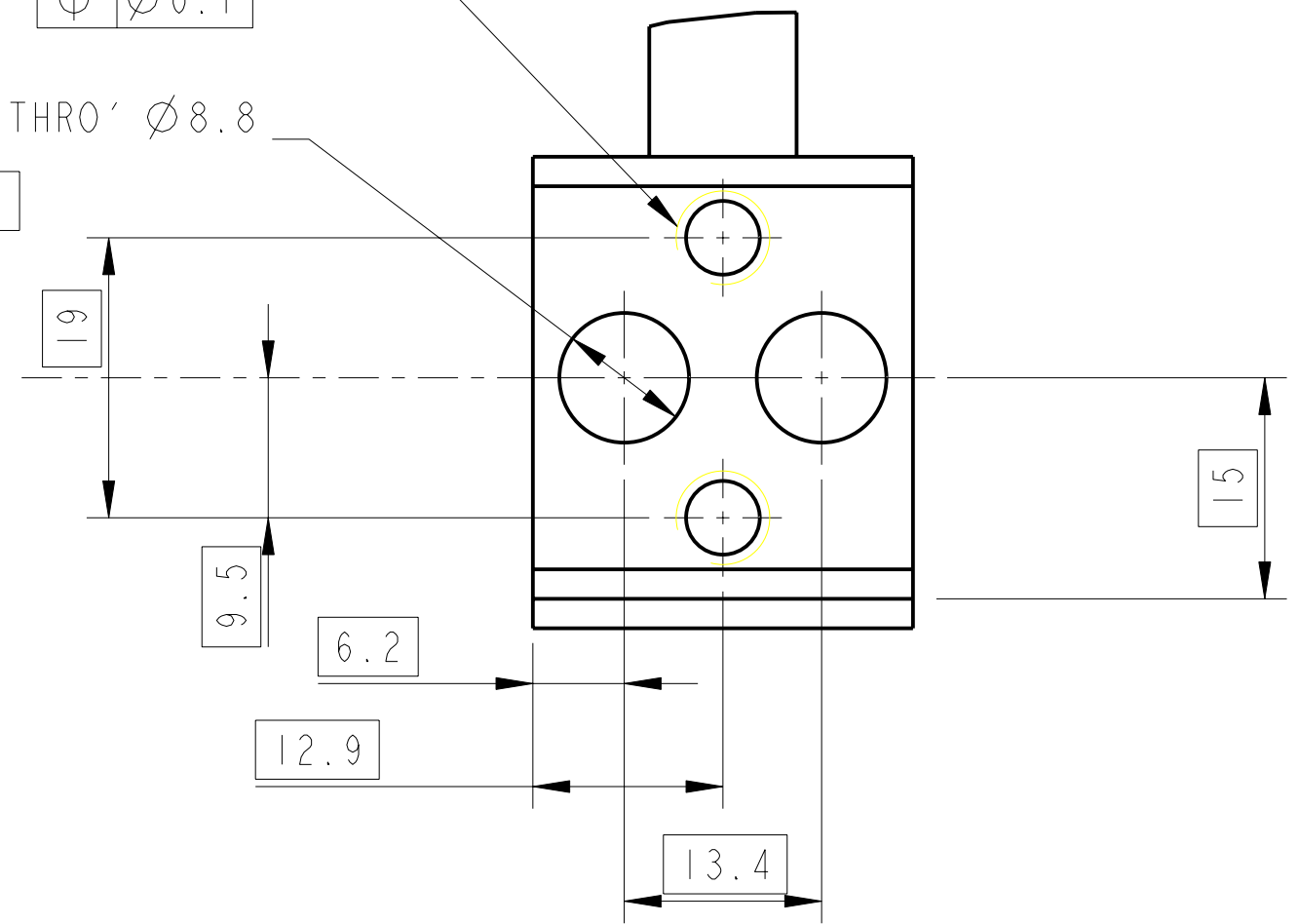
$\oplus \varnothing 0.1$

2 HOLES THRO'  $\varnothing 8.8$

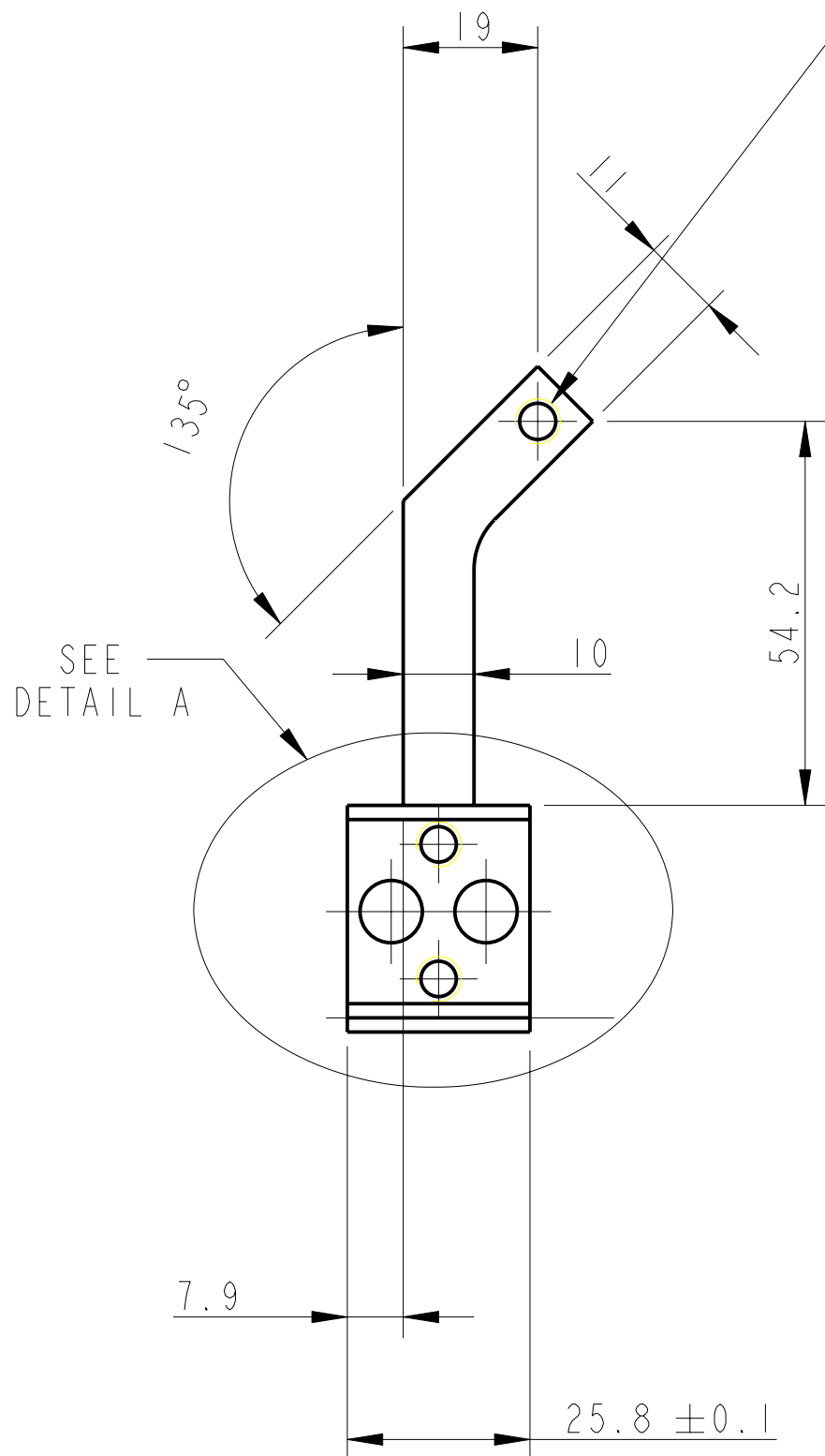
$\oplus \varnothing 0.2$

1 HOLE DR. THRO' FOR 1/4-20 UNC HELICOILS, HELICOILS NOT TO BE FITTED

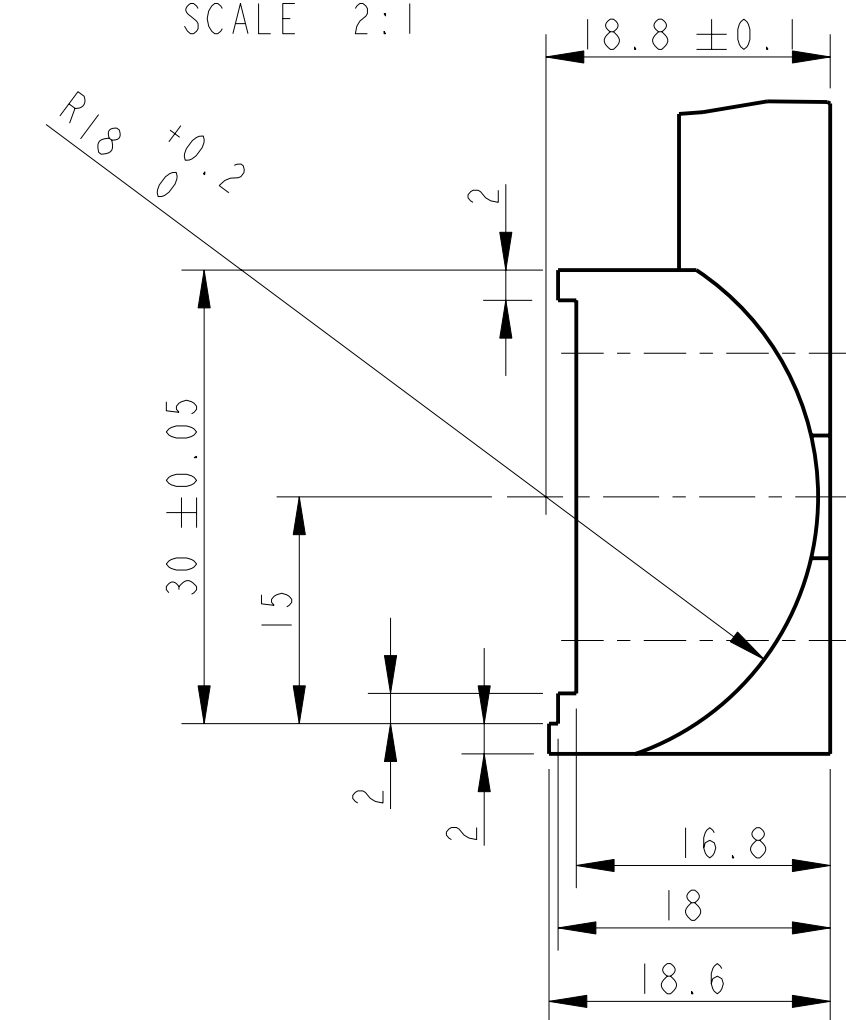
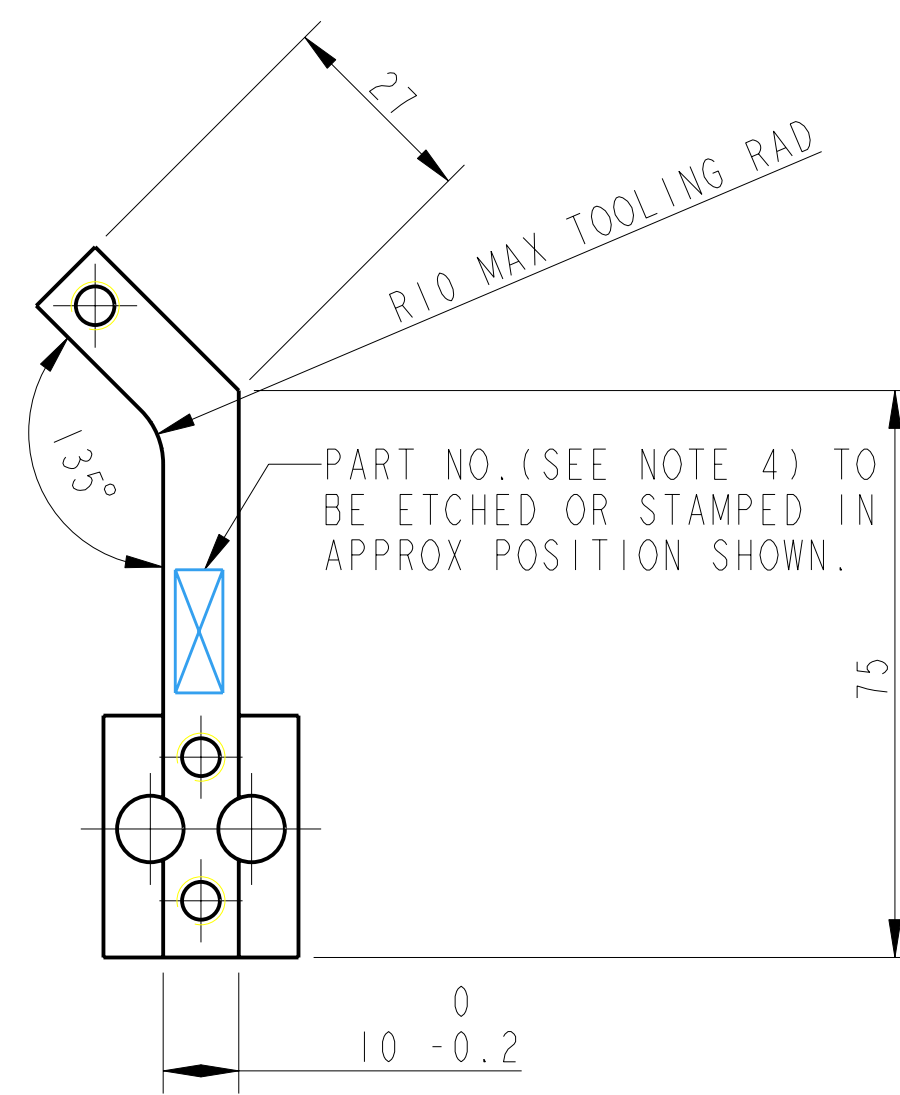
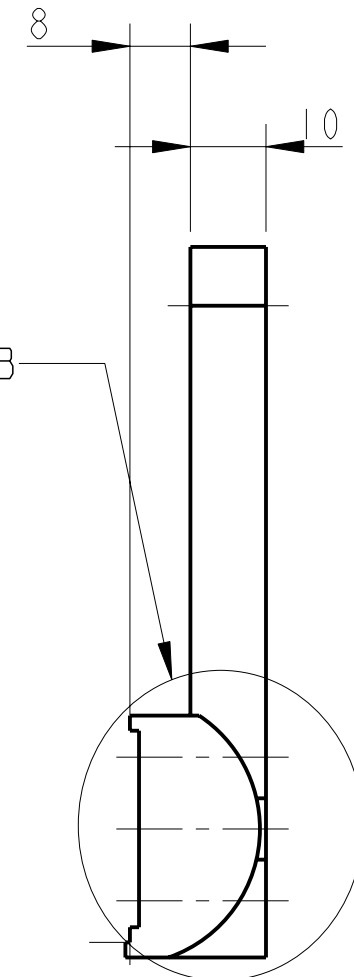
$\oplus \varnothing 0.3$



DETAIL A  
SCALE 2:1



SEE DETAIL B



DETAIL B  
SCALE 2:1

NOTES: (UNLESS OTHERWISE SPECIFIED)		DIMENSIONS ARE IN MM		TOLERANCES:	
1. REMOVE ALL SHARP EDGES, R.02 MIN.		X.XX ± 0.2		ANGULAR ± 0.25°	
2. DO NOT SCALE FROM DRAWING.		MATERIAL: AL. ALLOY		5083 OR SIMILAR	
3. ALL MACHINING FLUIDS SHALL BE WATER SOLUBLE AND FREE OF SULFUR, CHLORINE AND SILICONE, SUCH AS CINCINNATI MILACRON'S CIMTECH 410 (STAINLESS STEEL)		FINISH: CLEAN, GREASE FREE		Ra = 1.6	
4. SCRIBE, ENGRAVE OR STAMP DRAWING PART NUMBER ON NOTED SURFACE OF PART AND A THREE DIGIT SERIAL NUMBER. SERIAL NUMBERS START AT 001 FOR THE FIRST PART AND PROCEED CONSECUTIVELY. USE .07" HIGH CHARACTERS. EXAMPLE: D020188-001. A VIBRATORY TOOL MAY BE USED.		DRAWN: J'OD		DATE: 01/DEC/05	
		CHECKED: J'OD		DATE: JAN 08	
		APPROVED: JW		DATE: JAN 08	
		SCALE: 1:1		PROJECTION: 1st ANGLE	
		SHEET: 1 OF 1			

CALIFORNIA INSTITUTE OF TECHNOLOGY		GLASGOW UNIVERSITY GEO 600 GROUP		RUTHERFORD APPLETON LABORATORIES	
SYSTEM: ADVANCED LIGO		SUB-SYSTEM: SUS		NEXT ASSY: D070435	
PART NAME: BLADE TIP HEIGHT ADJ*1		DRG. NO.: D070418		REV. E	
BS TOP MASS		SCALE: 1:1		PROJECTION: 1st ANGLE	