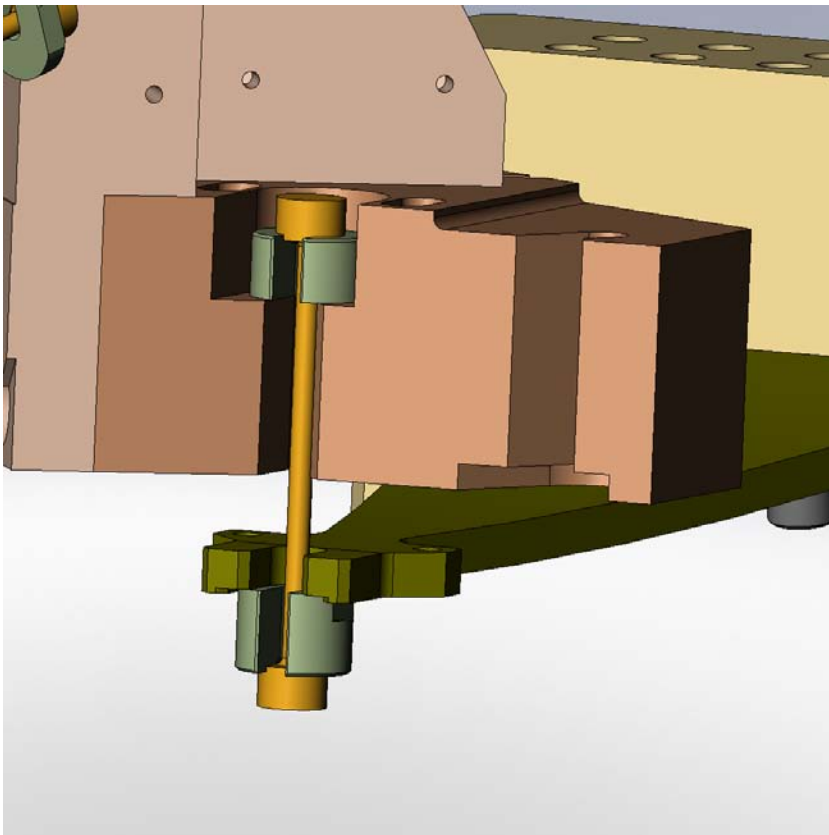
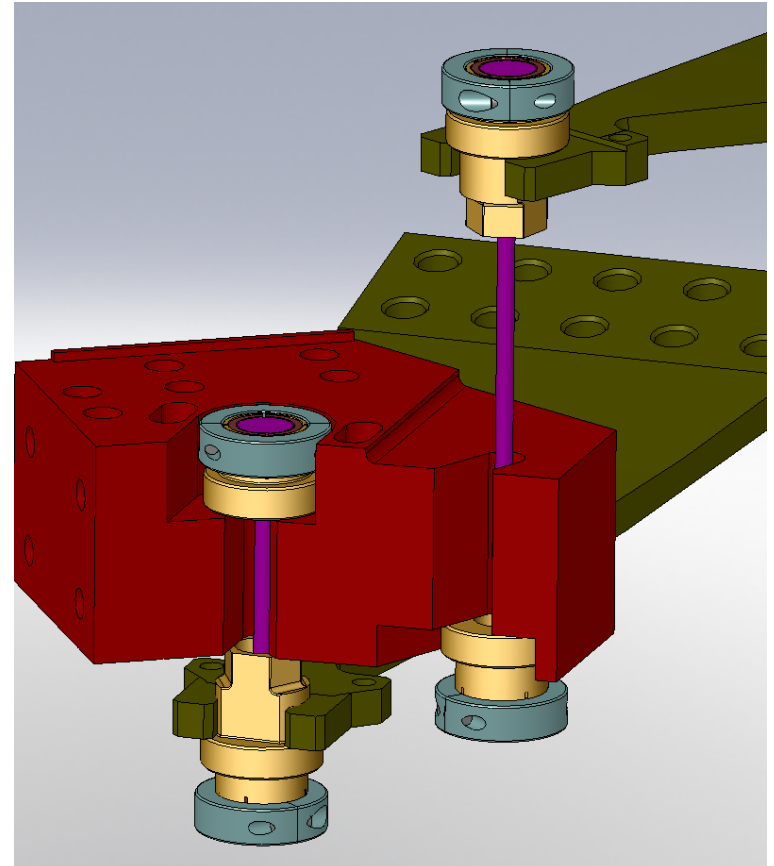


Adv LIGO BSC Flexure Rod Attachment

LASTI Prototype

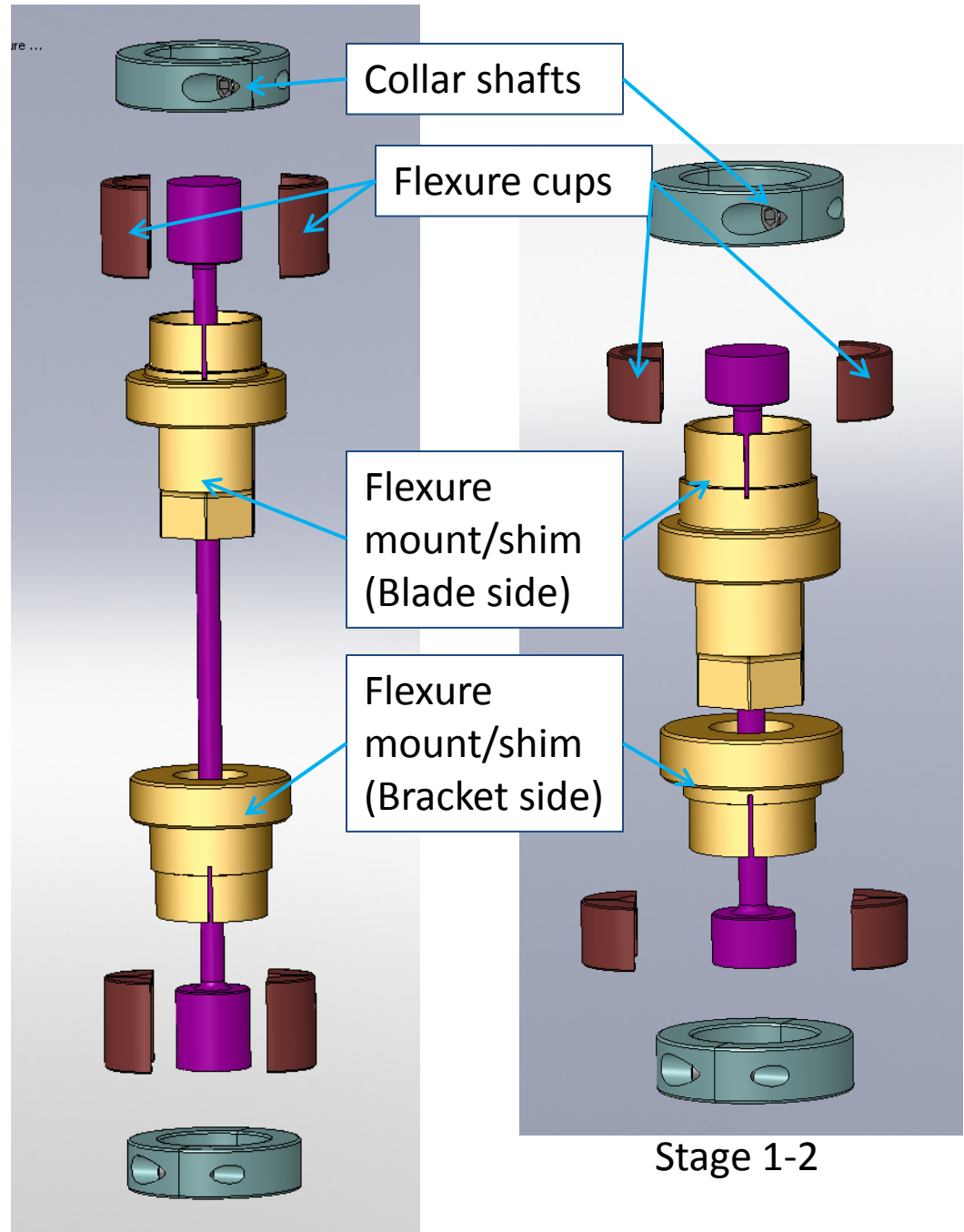


Proposed re-design



Exploded Views

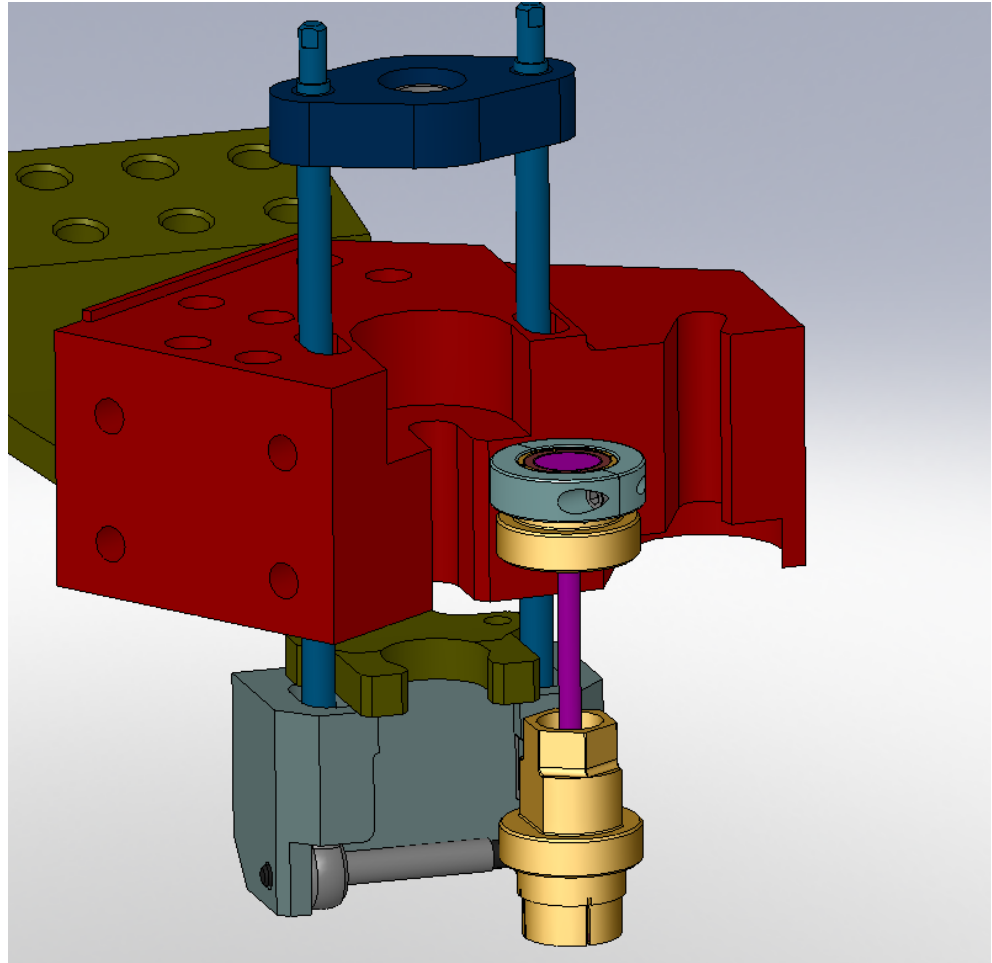
- Flexure mount/shim all different
- Flexure cups identical in each sub-assembly
- All collar shaft (custom hardware) identical



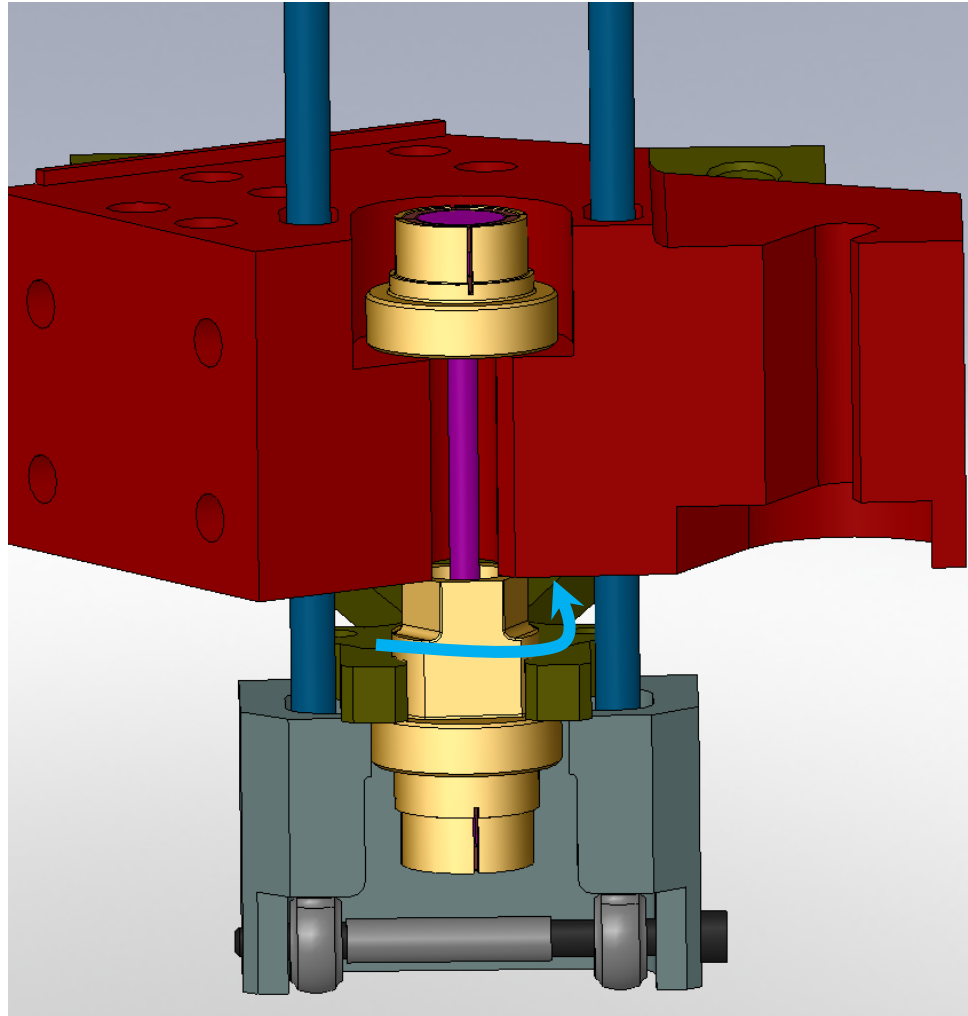
Stage 0-1

Blade loaded-Sliding flexure in place

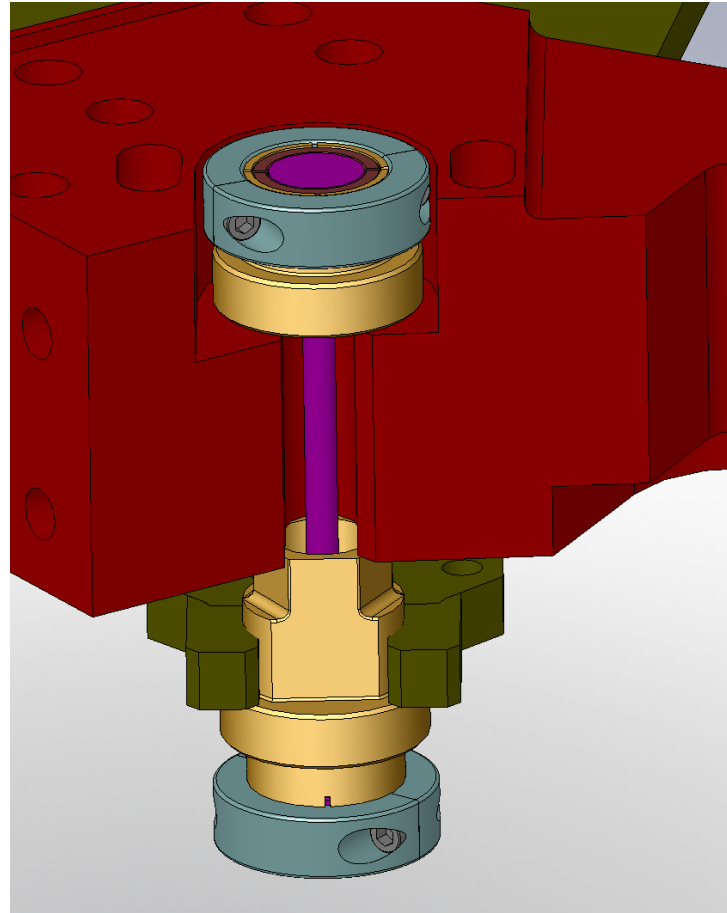
- No attachment or positioning on the bracket side
- Full attachment and positioning on the blade side



Locking flexure with a 15/16" wrench



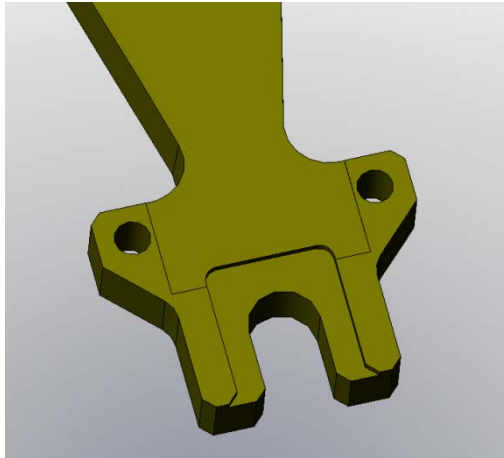
After unloading-attaching flexure rod
to the shims with collars



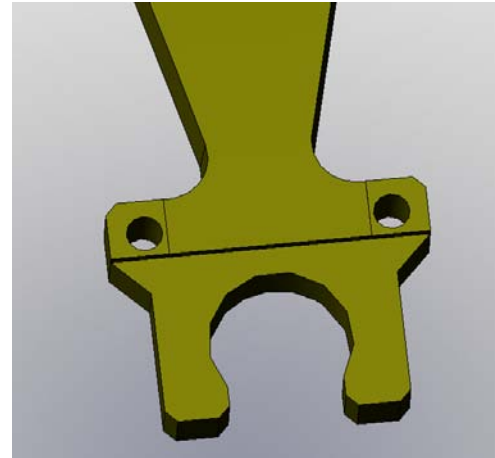
Other parts changes

- Blades
 - Enlarged, deeper (.06" to .08") cut-outs
 - Larger slot and hole

LASTI
Prototype

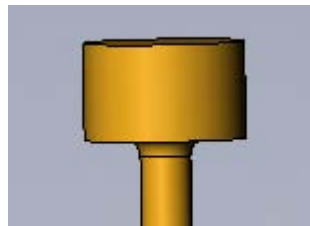


Proposed
Design

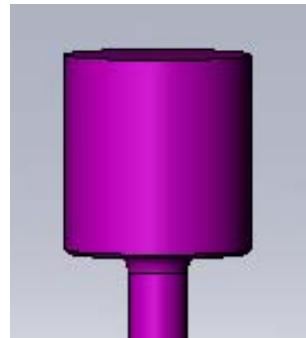


- Stage 0-1 flexure head (from .45" to .8" high)

LASTI
Prototype



Proposed
Design



Other parts changes (2)

- Bracket
 - Enlarged cut-outs
- Blade loading tool to modify