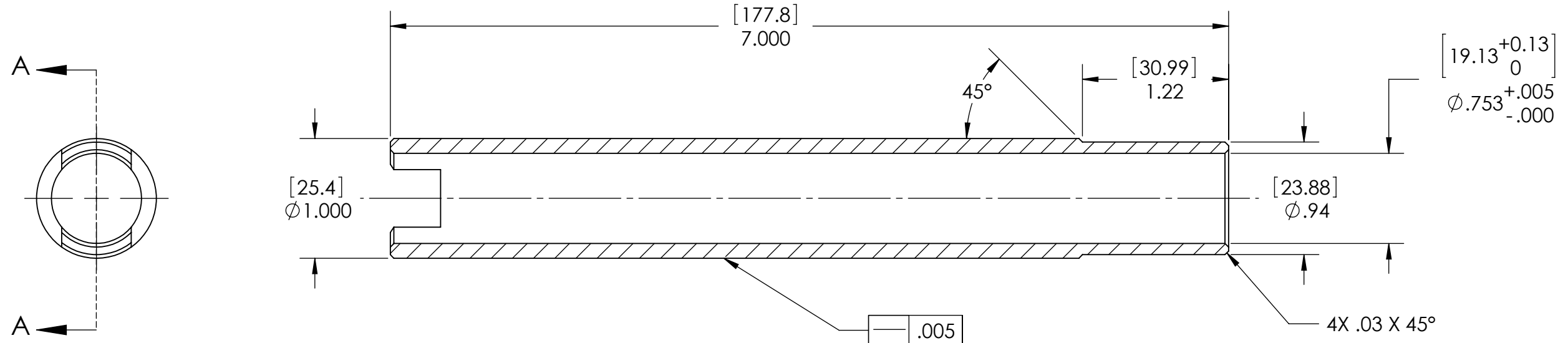


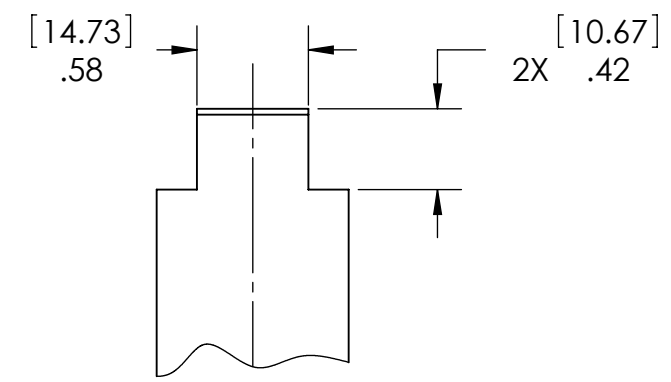
D0901889 LOCATING SLEEVE, CP, COC CONTAINER, ADVANCED LIGO, PART PDM REV: X-007, DRAWING PDM REV: X-006

**NOTES CONTINUED:**  
 ⑤ SCRIBE, ENGRAVE, OR MECHANICALLY STAMP (NO DYES OR INKS) A UNIQUE THREE DIGIT SERIAL NUMBER & REVISION NUMBER ON EACH PART. SERIAL NUMBERS START AT 001 FOR THE FIRST ARTICLE AND PROCEED CONSECUTIVELY. BAG AND TAG PARTS WITH THEIR DRAWING PART NUMBER, REVISION, VARIANT OR "TYPE" (IF APPLICABLE), AND QUANTITY. IF PARTS ARE TOO SMALL TO SCRIBE, BAGGING AND TAGGING ALONE IS SUFFICIENT.  
 EXAMPLE (PART): 001-v1  
 EXAMPLE (TAG): DXXXXXX-VY, TYPE-XX, QTY: TBD

REV.	DATE	DCN #	DRAWING TREE #
v1	16 SEPT 2009	E0900306	
v2	29 OCT 2009	E0900383	
v3	28 APR 2010	E1000141	



SECTION A-A



DIMENSIONS ARE IN INCHES [MM]		NOTES AND TOLERANCES: (UNLESS OTHERWISE SPECIFIED)		LIGO CALIFORNIA INSTITUTE OF TECHNOLOGY MASSACHUSETTS INSTITUTE OF TECHNOLOGY		PART NAME	
TOLERANCES: .XX ± .01 .XXX ± .005 ANGULAR ± 0.5°		1. INTERPRET DRAWING PER ASME Y14.5-1994. 2. REMOVE ALL SHARP EDGES, R.02 MIN. 3. DO NOT SCALE FROM DRAWING. 4. ALL MACHINING FLUIDS MUST BE FULLY SYNTHETIC, FULLY WATER SOLUBLE AND FREE OF SULFUR, SILICONE, AND CHLORINE.		ADVANCED LIGO		LOCATING SLEEVE, CP, COC CONTAINER	
MATERIAL PFA440 HP		FINISH N/A μinch		SUB-SYSTEM COC		DESIGNER K. BUCKLAND 31 AUG 2009	
				NEXT ASSY D0902001		DRAFTER K. BUCKLAND 14 SEPT 2009	
						CHECKER K. MAILAND 16 SEPT 2009	
						APPROVAL C. TORRIE 16 SEPT 2009	
						SIZE DWG. NO. B D0901889	
						REV. v3	
						SCALE: 1:1 PROJECTION: SHEET 1 OF 1	