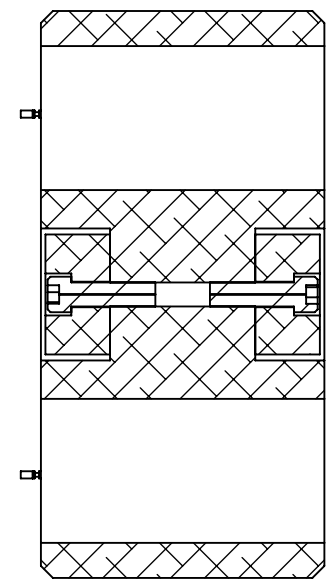
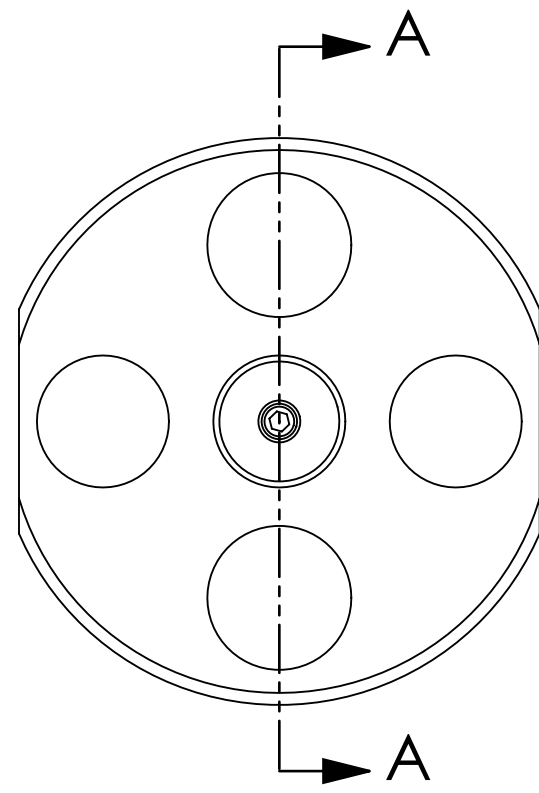
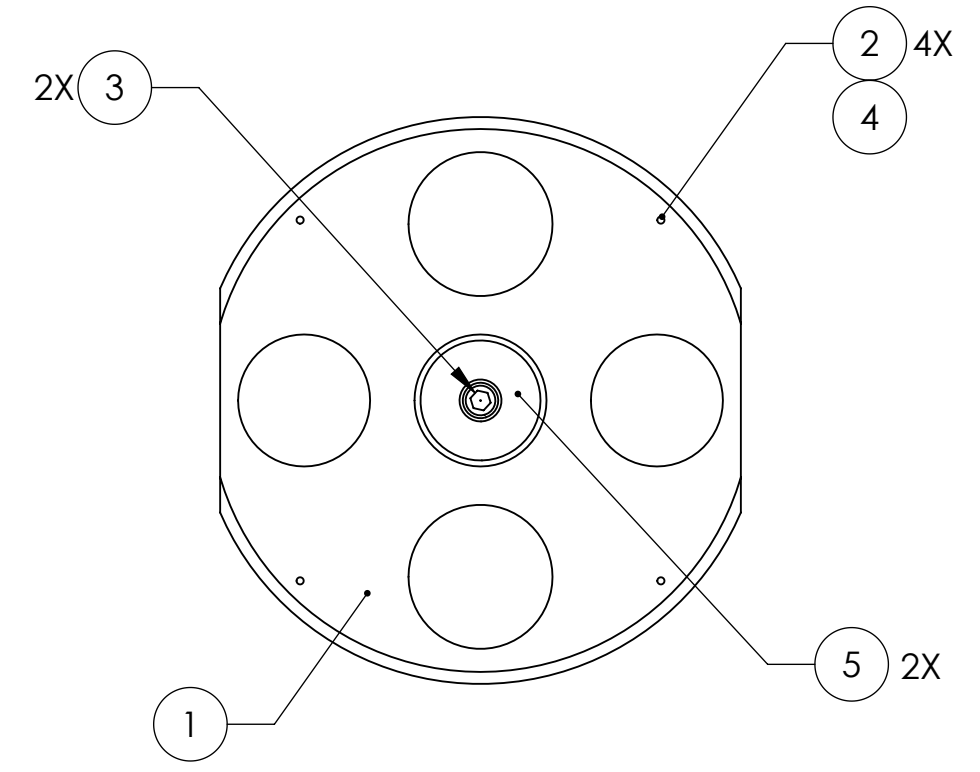


D0901873_AdvLIGO_SUS_HSTS_Intermediate Mass Assembly, PART PDM REV: V1-001, DRAWING PDM REV: V1-000

REV.	DATE	DCN #	DRAWING TREE #
v1	30 DEC 2009	E0900503	E0900353
v2	17 JUN 2010	E1000219	E0900353
-	-	-	-



SECTION A-A
SCALE 1 : 2



ALT	PART NUMBER	DESCRIPTION	MATERIAL	REQ	SPARE	TOTAL
	D030078	ADD-ON MASS, 20g	304, 316 OR 302 SSTL	A/R	-	A/R
	D020351	ADD-ON MASS, 50g	304, 316 OR 302 SSTL	A/R	-	A/R
	5	ADD-ON MASS, 100g	304, 316 OR 302 SSTL	2	1	3
	4	UHV-COMPATIBLE ADHESIVE (CERAMABOND #835M OR EQUIVALENT)	-	A/R	-	A/R
	3	SCREW, SOCKET HEAD CAP, 1/4-20 UNC-2A X 0.875 LONG, VENTED	300 SSTL	2	1	3
	2	MAGNET-STANDOFF ASSEMBLY, INT. MASS	N/A	4	1	5
	1	INTERMEDIATE MASS, HSTS	6061-T6 Al	1	-	1
ITEM NO.	PART NUMBER	DESCRIPTION	MATERIAL	REQ	SPARE	TOTAL

NOTES: (UNLESS OTHERWISE SPECIFIED)
 1. PARTS TO BE ASSEMBLED ACCORDING TO E030518, HSTS ASSEMBLY SPECIFICATION, USING D020427, HSTS MAGNET PLACEMENT FIXTURE.

CALIFORNIA INSTITUTE OF TECHNOLOGY MASSACHUSETTS INSTITUTE OF TECHNOLOGY		PART NAME INTERMEDIATE MASS ASSEMBLY, HSTS	
SYSTEM ADVANCED LIGO	SUB-SYSTEM SUS	DESIGNER M. MEYER	DATE 25 AUG 2009
DRAFTER W. RASCH	CHECKER M. MEYER	DATE 27 OCT 2009	DATE 27 OCT 2009
APPROVAL	APPROVAL	APPROVAL	APPROVAL
NEXT ASSY D020700	SCALE 1:1	DWG. NO. B D0901873	REV. v2
PROJECTION:		SHEET 1 OF 1	