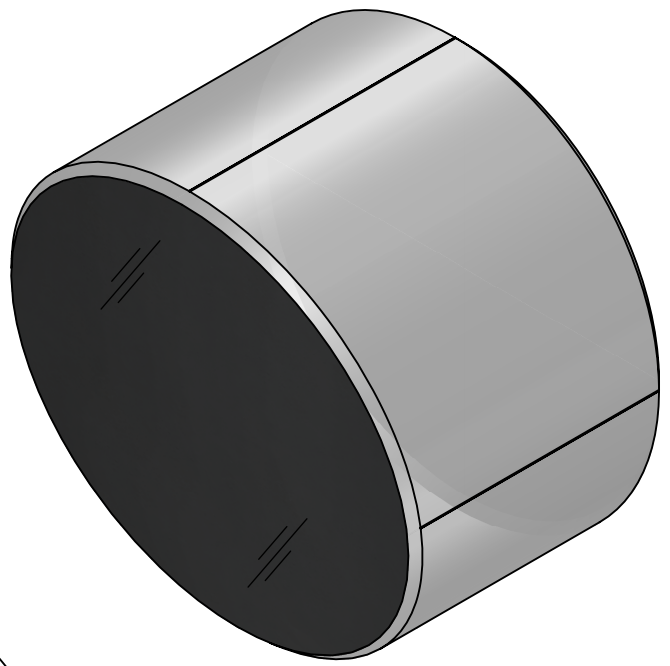
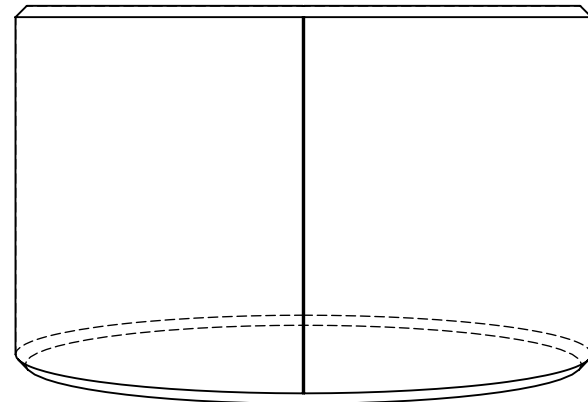


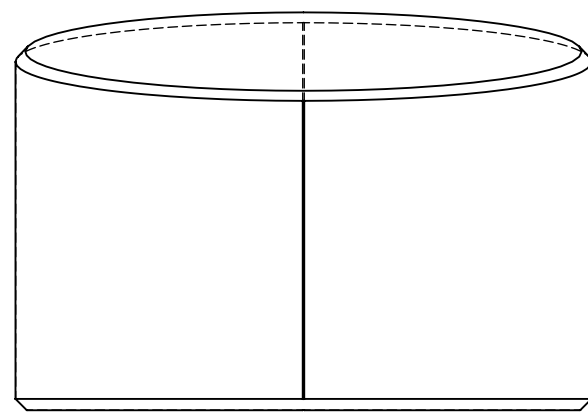
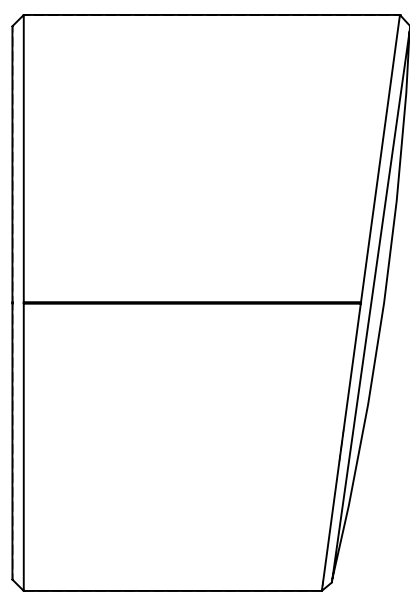
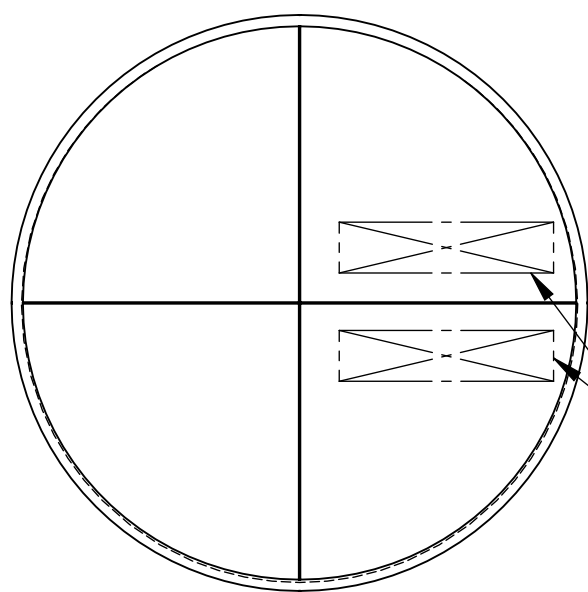
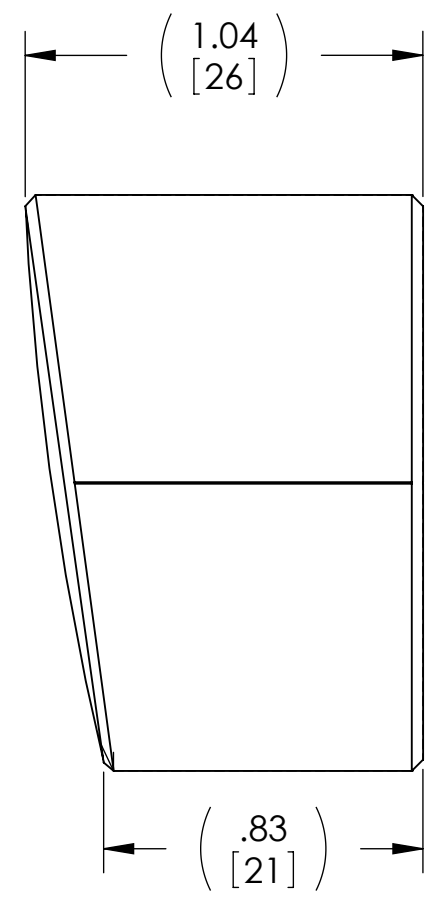
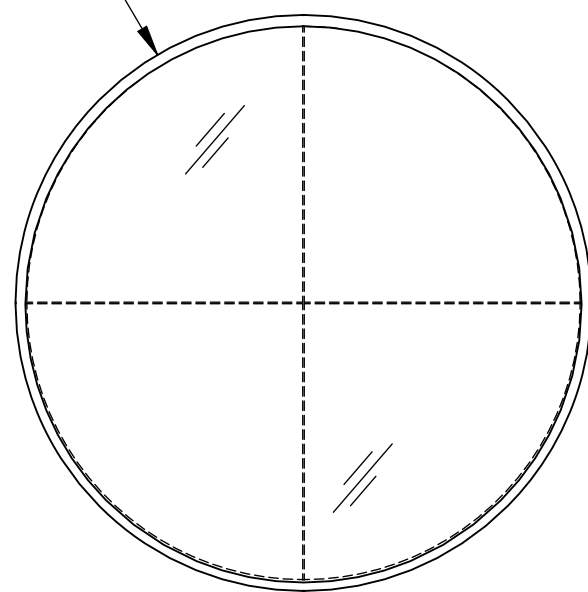
8 7 6 5 4 3 2 1

- NOTES :**
1. ALL PARTS AS SHOWN SHALL BE MANUFACTURED IN ACCORDANCE WITH LIGO SPECIFICATION E0900349.
 2. MASS: 69.5 G [0.153 LB].
 3. MARK SERIAL NUMBER IN NOTED REGION. MARK ACCORDING TO E0900349, SECTION 3.3.1.2.

REV.	DATE	DCN #	DRAWING TREE #
v1	21 SEP 2011	E1100351	-
v2	08 FEB 2012	E1101192	-
-	-	-	-



$(\phi 1.500)$
[38.1]



D0901565_AD LIGO ETM TELESECONDARY, PART PDM REV: X-024, DRAWING PDM REV: X-011

D C B A

D C B A

NOTES AND TOLERANCES: (UNLESS OTHERWISE SPECIFIED)				LIGO CALIFORNIA INSTITUTE OF TECHNOLOGY MASSACHUSETTS INSTITUTE OF TECHNOLOGY		PART NAME	
DIMENSIONS ARE IN INCHES				ADVANCED LIGO		ETM TELESCOPE SECONDARY PARABOLIC MIRROR	
TOLERANCES: .XX ± .02 .XXX ± .005				SUB-SYSTEM AOS		DESIGNER	M. SMITH
ANGULAR ± 1.0°				NEXT ASSY D1102361		DRAFTER	J. TERRAZAS
MATERIAL ZERODUR		FINISH N/A μinch		APPROVAL	SEE DCN	13 OCT 2009	SIZE DWG. NO.
						08 FEB 2012	B D0901565
							REV. v2
							SCALE: NONE PROJECTION: SHEET 1 OF 1

8 7 6 5 4 3 2 1