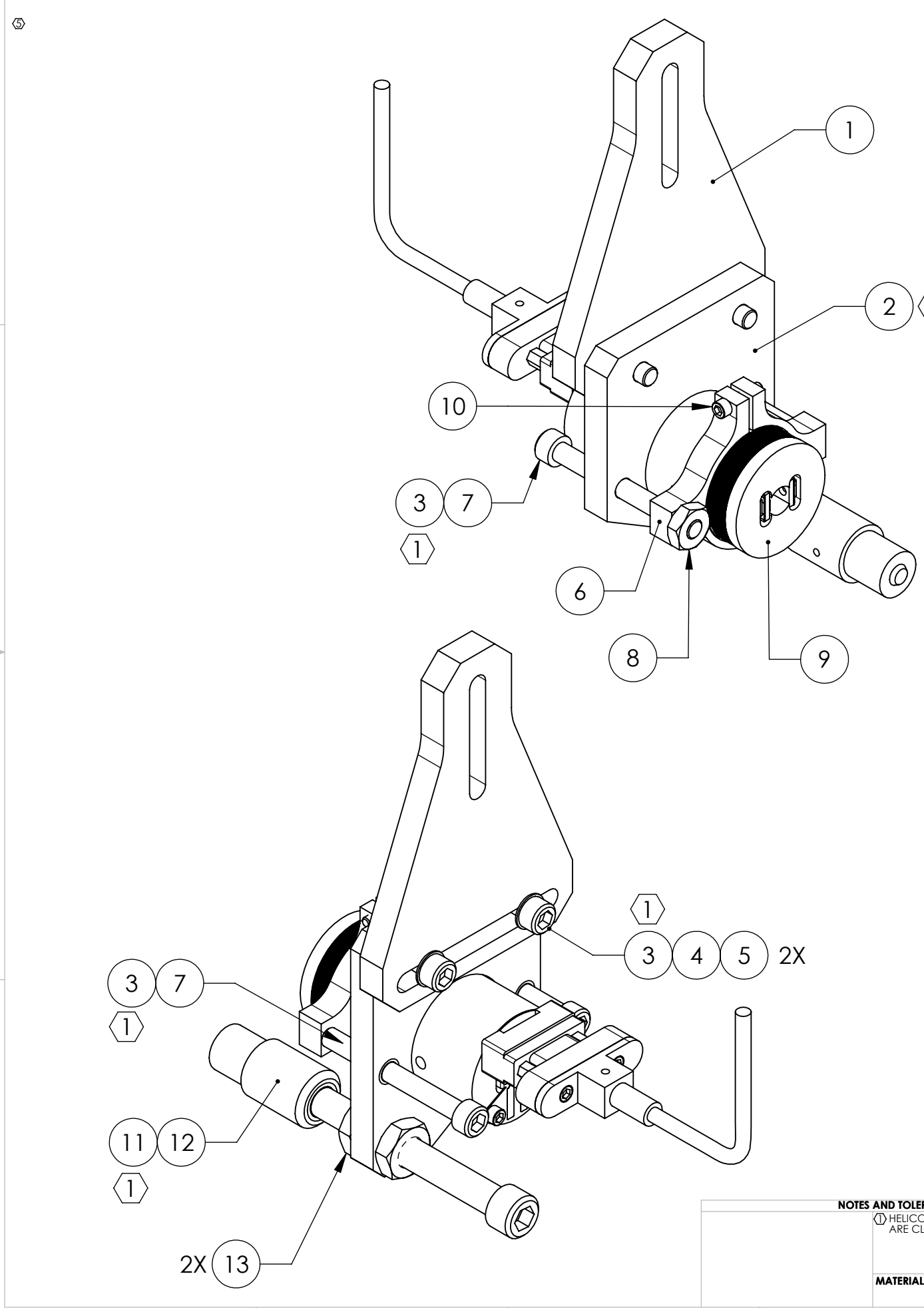


D0901552_Advanced_LIGO_SUS_HLTS_Upper_AOSEM_Alignment_Assembly_Test_Mass, PART PDM REV: V1-000, DRAWING PDM REV: V1-001

REV.	DATE	DCN #	DRAWING TREE #
v1	17 AUG 2009	E0900243	E080191
v2	02 DEC 2009	E0900446	E080191
-	-	-	-



ITEM NO.	PART NUMBER	DESCRIPTION	MATERIAL	REQ	SPARE	TOTAL
13	-	JAM NUT, 1/4-20	300 SSTL	2	1	3
12	D080725	EARTHQUAKE STOP FOR METAL OR GLASS	N/A	1	0	1
11	1185-4EN250	HELICOIL, 1/4-20 X 0.25 LONG (1)	NITRONIC 60	1	1	2
10	-	SCREW, SOCKET HEAD CAP, #2-56 UNC-2A X 0.375 LONG	300 SSTL	1	1	2
9	D0901065	AOSEM ASSEMBLY	N/A	1	0	1
8	-	LOCKNUT, #8-32	300 SSTL	1	1	2
7	-	SCREW, SOCKET HEAD CAP, #8-32 UNC-2A X 1.5 LONG, FULLY THREADED	300 SSTL	2	1	3
6	D0901548	AOSEM ADJUSTMENT COLLAR	6061-T6 Al	1	0	1
5	-	SCREW, SOCKET HEAD CAP, #8-32 UNC-2A X 0.625 LONG	300 SSTL	2	1	3
4	-	WASHER, FLAT, #8 (NAS 620-C8L OR EQUIVALENT)	300 SSTL	2	1	3
3	1185-2EN246	HELICOIL, #8-32 X 0.246 LONG (1)	NITRONIC 60	4	2	6
2	D0901549	AOSEM ALIGNMENT BRACKET, TEST MASS (1)	6061-T6 Al	1	0	1
1	D0901550	UPPER AOSEM MOUNTING BRACKET, TEST MASS	6061-T6 Al	1	0	1
ITEM NO.	PART NUMBER	DESCRIPTION	MATERIAL	REQ	SPARE	TOTAL

NOTES AND TOLERANCES: (UNLESS OTHERWISE SPECIFIED)

(1) HELICOILS TO BE INSTALLED INTO ITEM NO. 2 BY LIGO AFTER ALL PARTS ARE CLEANED AND BAKED.

CALIFORNIA INSTITUTE OF TECHNOLOGY MASSACHUSETTS INSTITUTE OF TECHNOLOGY		PART NAME UPPER AOSEM ALIGNMENT ASSY, TEST MASS	
SYSTEM ADVANCED LIGO	SUB-SYSTEM SUS	DESIGNER D. BRIDGES	DATE 20 JAN 2010
DRAFTER D. BRIDGES	CHECKER M. MEYER	DATE 20 JAN 2010	DATE 21 JAN 2010
APPROVAL	SCALE: 1:1	PROJECTION:	SHEET 1 OF 1

MATERIAL	N/A	FINISH	N/A μinch
NEXT ASSY	HLTS OVERALL ASSY		

SIZE DWG. NO.
B
D0901552
REV.
v2