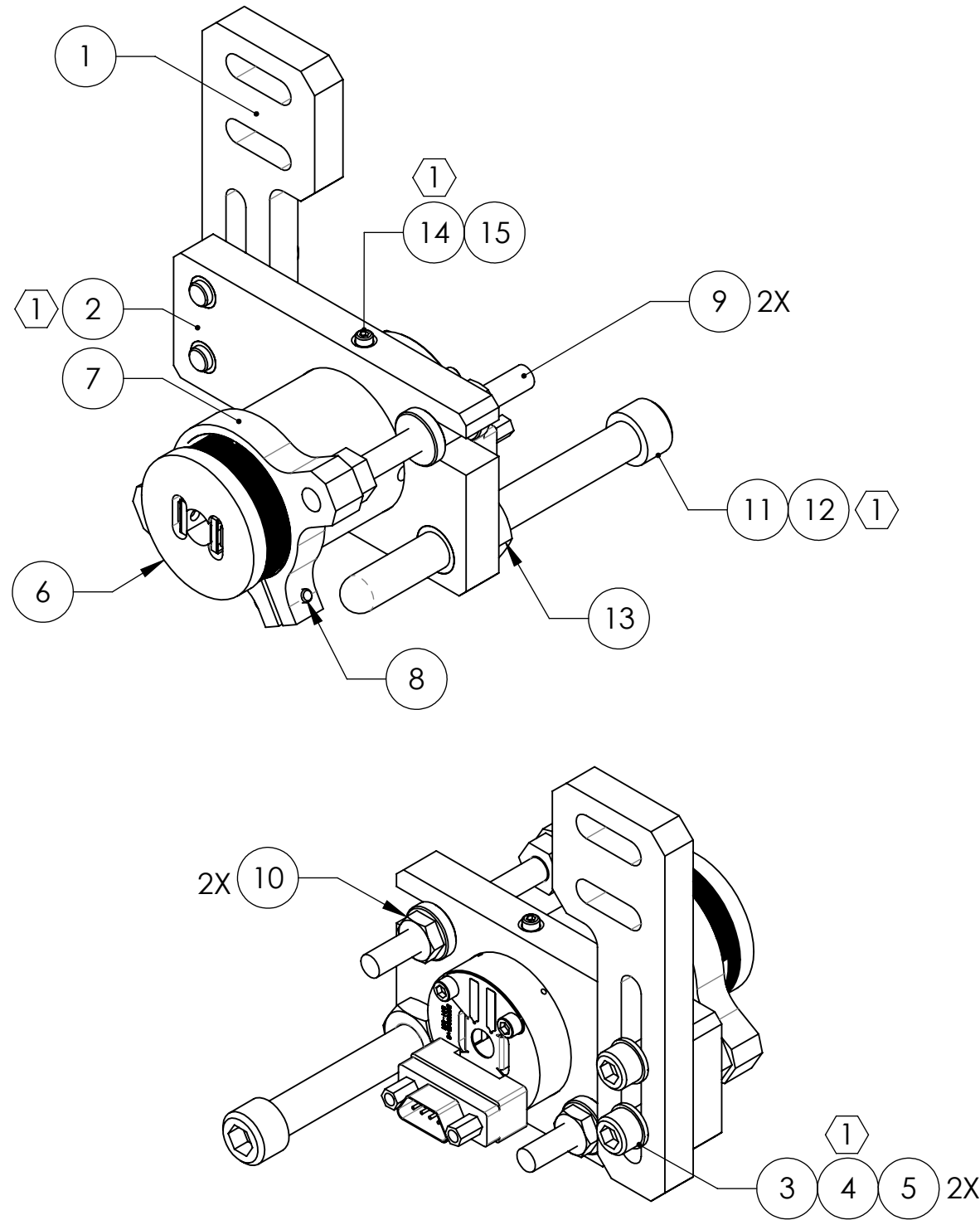


D0901551\_Advanced\_LIGO\_SUS\_HLTS\_Lower\_AOSEM\_Alignment\_Assembly\_Intermediate\_Mass\_PART PDM REV: V3-001, DRAWING PDM REV: V3

REV.	DATE	DCN #	DRAWING TREE #
v1	17 AUG 2009	E0900243	E080191
v2	02 DEC 2009	E0900446	E080191
v3	09 DEC 2010	E1000849	E080191
v4	05 MAR 2011	E1100228	E080191



15	-	SCREW, SOCKET SET, #4-40 UNC-2A X 0.25 LONG, OVAL POINT	300 SSTL	1	1	2
14	1185-04EN168	HELICOIL, #4-40 X 0.168 LONG (1)	NITRONIC 60	1	1	2
13	-	JAM NUT, 1/4-20	300 SSTL	1	1	2
12	1185-4EN250	HELICOIL, 1/4-20 X 0.25 LONG (1)	NITRONIC 60	1	1	2
11	D030021	SCREW, SOCKET HEAD CAP, 1/4-20 UNC-3A X 2.5 LONG, FULLY THREADED, ROUNDED END	300 SSTL	1	1	2
10	D1002865	ADJUSTMENT NUT, THICK	PEEK	2	0	2
9	D1000659	ADJUSTER SHAFT	304, 316 OR 302 SSTL	2	0	2
8	-	SCREW, SOCKET HEAD CAP, #2-56 UNC-2A X 0.375 LONG	300 SSTL	1	1	2
7	D1002858	AOSEM ADJUSTMENT COLLAR (REVERSE SIDE)	6061-T6 Al	1	0	1
6	D0901065	AOSEM ASSEMBLY	N/A	1	0	1
5	-	WASHER, FLAT, VENTED, #8 (U-C COMPONENTS P/N WFV-08 OR EQUIVALENT)	300 SSTL	2	1	3
4	1185-2EN246	HELICOIL, #8-32 X 0.246 LONG (1)	NITRONIC 60	2	1	3
3	-	SCREW, SOCKET HEAD CAP, #8-32 UNC-2A X 0.625 LONG	300 SSTL	2	1	3
2	D0901492	AOSEM ALIGNMENT BRACKET, INT. MASS (1)	6061-T6 Al	1	0	1
1	D0901493	LOWER AOSEM MOUNTING BRACKET, INT. MASS	6061-T6 Al	1	0	1
ITEM NO.	PART NUMBER	DESCRIPTION	MATERIAL	REQ	SPARE	TOTAL

PARTS LIST

NOTES AND TOLERANCES: (UNLESS OTHERWISE SPECIFIED)

(1) HELICOILS TO BE INSTALLED INTO ITEM NO. 2 BY LIGO AFTER ALL PARTS ARE CLEANED AND BAKED.

MATERIAL	N/A	FINISH	N/A μinch
----------	-----	--------	-----------

CALIFORNIA INSTITUTE OF TECHNOLOGY MASSACHUSETTS INSTITUTE OF TECHNOLOGY	PART NAME		LOWER AOSEM ALIGNMENT ASSY, INT. MASS		
	SYSTEM <b>ADVANCED LIGO</b>	SUB-SYSTEM <b>SUS</b>	DESIGNER D. BRIDGES	DATE 14 JUN 2011	SIZE DWG. NO. <b>B</b>
DRAFTER D. BRIDGES	DATE 15 JUN 2011	CHECKER B. MOORE	DATE 16 JUN 2011	PART NUMBER <b>D0901551</b>	REV. <b>v4</b>
NEXT ASSY <b>HLTS OVERALL ASSY</b>			SCALE: 1:1	PROJECTION:	SHEET 1 OF 1